

General Notes:

Age Group

☒ 2-5yrs ☒ 5-12 yrs ☒ 2-12yrs ☐ 13+ yrs

- 1.The Americans with Disabilities Act (ADA) may require that you make your park and/or playground accessible when viewed in its entirety. Please consult your legal counsel to determine if the ADA applies to you.
- 2.For playground equipment to be considered accessible, accessible surfacing must be utilized in applicable areas.
- 3.Although a particular playground design may not meet the proposed Access Board Regulations in regards to the appropriate number of ground level events, the actual playground may be in compliance when considering existing play components.
- 4.All deck heights are measured from top of ground cover.
- 5.Fall absorbing ground cover is required under and around all play equipment.
- 6.The minimum recommended fall zone around the entire playstructure is shown. This zone is to be free of all tripping or collision hazards (i.e. roots, rocks, border material, etc.).
- 7.All post lengths are identified by text showing the post lengths, i.e. 96 represents a 96 inch post.
- 8.Not all equipment may be appropriate for all children. Supervision is required.

AGE GROUP: 2-5
ELEVATED PLAY ACTIVITIES - TOTAL: 3
ELEVATED PLAY ACTIVITIES ACESIBLE BY TRANSFER: 3 REQ'D 2
ELEVATED PLAY ACTIVITIES ACESIBLE BY RAMP: 0 REQ'D 0
GROUND LEVEL ACTIVITY TYPE: 3 REQ'D 1
GROUND LEVEL QUANTITY: 5 REQ'D 1

AGE GROUP: 2-12
ELEVATED PLAY ACTIVITIES - TOTAL: 0
ELEVATED PLAY ACTIVITIES ACESIBLE BY TRANSFER: 0 REQ'D 0
ELEVATED PLAY ACTIVITIES ACESIBLE BY RAMP: 0 REQ'D 0
GROUND LEVEL ACTIVITY TYPE: 1 REQ'D 0
GROUND LEVEL QUANTITY: 1 REQ'D 0

AGE GROUP: 5-12
ELEVATED PLAY ACTIVITIES - TOTAL: 9
ELEVATED PLAY ACTIVITIES ACESIBLE BY TRANSFER: 5 REQ'D 5
ELEVATED PLAY ACTIVITIES ACESIBLE BY RAMP: 0 REQ'D 0
GROUND LEVEL ACTIVITY TYPE: 5 REQ'D 3
GROUND LEVEL QUANTITY: 14 REQ'D 3



Huntington Park
Hoffman Estates, IL

BUS STOP ROOF
200200239

ROOF
200007137

TRANSFER
STATION
200200767

TRANSFER STATION
W/SAFETY RAILS
200202562

DECK TO DECK
STEPS
200125540

DBL LONG
PLASTIC SLIDE
200201043

KB SILO SCRAMBLE W/DBL
ENCLOSURE
200203590

WAVY RUNG
CLIMBER
200202174

HYPERSONIC
SLIDE
200202105

FINGER
MAZE PANEL
200054648

RUNG
LADDER
200054574

CURLY
CLIMBER
200200269

9 BAR
SAFETY RAIL
W/WHEEL
200114727

WHEEL
200203575

CURVED
CLIMBING WALL
200034456

CURVED
TRACK
RIDE
200055711

POST
WHEEL ALUMINUM
200203573

DECK TO DECK
STEPS
200200655

SGL PLASTIC
WAVE SLIDE
200201026

DRAGONFLY
PANEL
200201214

OFFSET
ENCLOSURE
200203378

CHALLENGE
LADDER 6'
200201085

INCLINED
CLIMBER
200202107

DBL WIDE
PLASTIC SLIDE
200203389

MAX PLAY SWING
INGROUND ONLY
200200417

MAX PLAY SWING
INGROUND ONLY
200202202

GENERATION
SWING SEAT
200203423

TOT SEAT
200202836

TOT SEAT
200202836

Inchworm Climber
LTTP2030M

STEPPING
STONES
200092985

STEPPING
STONES
200092985

STEPPING
STONES
200092985

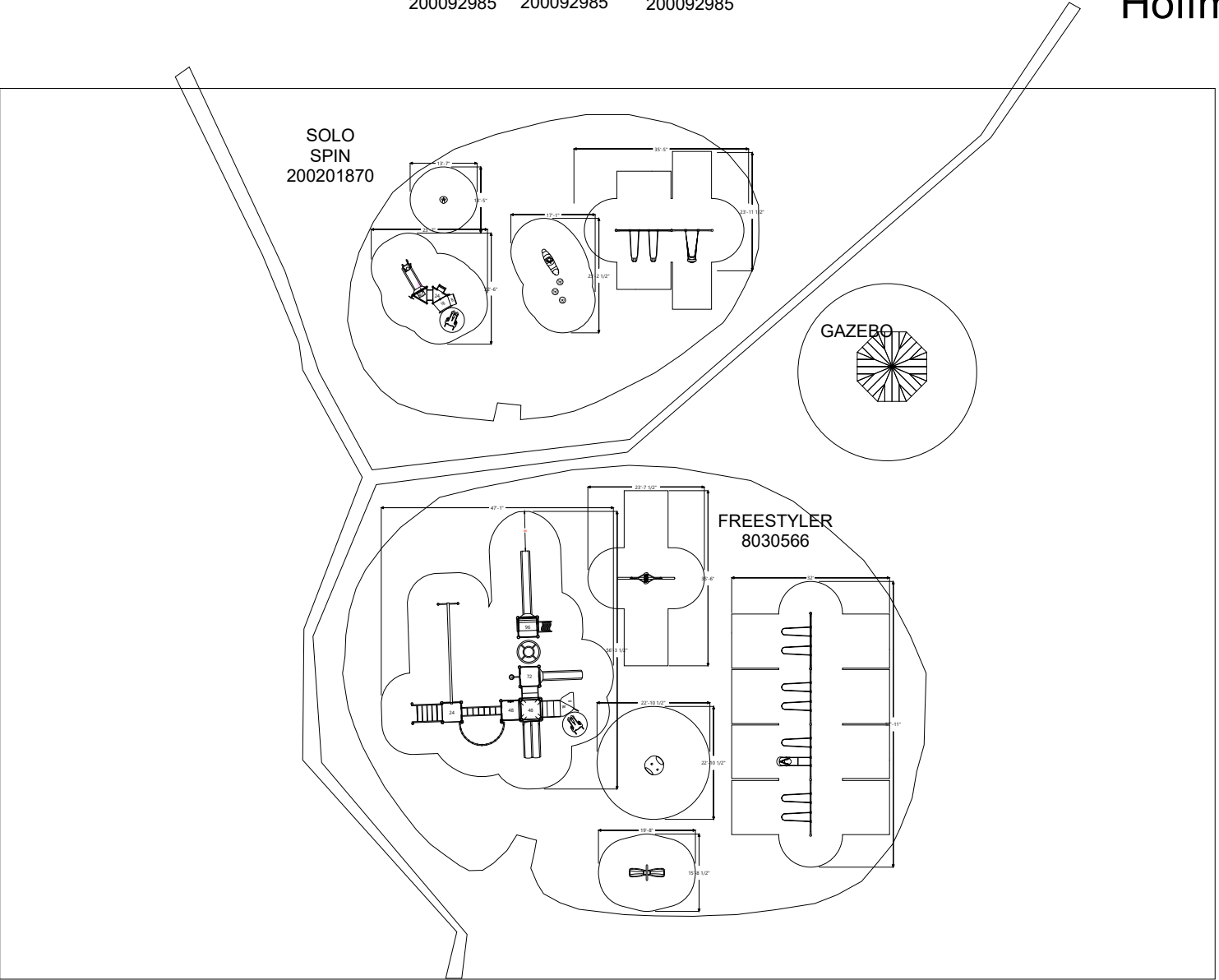
SOLO
SPIN
200201870

GAZEBO

FREESTYLER
8030566

WOBBLE
SPHERE
INGROUND ONLY
200203198

DRAGONFLY
INGROUND ONLY
100011367



MAX PLAY SWING
INGROUND ONLY
200202204

MAX PLAY SWING
INGROUND ONLY
200202202

BELT SEAT
200202835

BELT SEAT
200202835

BELT SEAT
200202835

BELT SEAT
200202835

BELT SEAT
200202835

INCLUSIVE
SEAT
912358

INCLUSIVE
SEAT
200203433

MAX PLAY SWING
INGROUND ONLY
200202204

MAX PLAY SWING
INGROUND ONLY
200202204

BELT SEAT
200202835

BELT SEAT
200202835

Project:
Huntington Park
Hoffman Estates, IL
LTCPS rep:
Lani Chaplik
PARKREATION, INC.
(847) 419-7744

Ground Space: 84'-0" x 139'-0"
Protective Area: 105'-6" x 154'-6"

Drawn by: Lani Cahplik
Date: 2/10/2022
DWG Name: R0309_44602622436

LTCPS - Farmington
878 East Highway 60
Monett, Missouri 65708
Voice: 1-800-325-8828
Fax: 417-354-2273

Playground Layout
Compliance:

- ☒ ASTM F1487 - Playground
Equipment for Public Use.
☒ CPSC Handbook for Public
Playground Safety

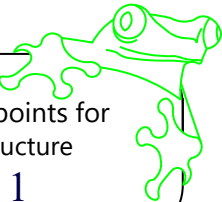
- ☒ This playground design meets the
final Access Board Regulations.



The play components identified in this
plan are IPEMA certified.The use and
layout of these components conform to
the requirements of ASTM F1487.

LEED points for
this structure

1



General Notes:

Age Group

☒ 2-5yrs ☒ 5-12 yrs ☒ 2-12yrs ☐ 13+ yrs

1. The Americans with Disabilities Act (ADA) may require that you make your park and/or playground accessible when viewed in its entirety. Please consult your legal counsel to determine if the ADA applies to you.
2. For playground equipment to be considered accessible, accessible surfacing must be utilized in applicable areas.
3. Although a particular playground design may not meet the proposed Access Board Regulations in regards to the appropriate number of ground level events, the actual playground may be in compliance when considering existing play components.
4. All deck heights are measured from top of ground cover.
5. Fall absorbing ground cover is required under and around all play equipment.
6. The minimum recommended fall zone around the entire play structure is shown. This zone is to be free of all tripping or collision hazards (i.e. roots, rocks, border material, etc.).
7. All post lengths are identified by text showing the post lengths, i.e. 96 represents a 96 inch post.
8. Not all equipment may be appropriate for all children. Supervision is required.

AGE GROUP: 2-5
ELEVATED PLAY ACTIVITIES - TOTAL: 3
ELEVATED PLAY ACTIVITIES ACCESSIBLE BY TRANSFER: 3 REQ'D 2
ELEVATED PLAY ACTIVITIES ACCESSIBLE BY RAMP: 0 REQ'D 0
GROUND LEVEL ACTIVITY TYPE: 3 REQ'D 1
GROUND LEVEL QUANTITY: 5 REQ'D 1

AGE GROUP: 2-12
ELEVATED PLAY ACTIVITIES - TOTAL: 0
ELEVATED PLAY ACTIVITIES ACCESSIBLE BY TRANSFER: 0 REQ'D 0
ELEVATED PLAY ACTIVITIES ACCESSIBLE BY RAMP: 0 REQ'D 0
GROUND LEVEL ACTIVITY TYPE: 1 REQ'D 0
GROUND LEVEL QUANTITY: 1 REQ'D 0

AGE GROUP: 5-12
ELEVATED PLAY ACTIVITIES - TOTAL: 9
ELEVATED PLAY ACTIVITIES ACCESSIBLE BY TRANSFER: 5 REQ'D 5
ELEVATED PLAY ACTIVITIES ACCESSIBLE BY RAMP: 0 REQ'D 0
GROUND LEVEL ACTIVITY TYPE: 5 REQ'D 3
GROUND LEVEL QUANTITY: 14 REQ'D 3



Huntington Park
Hoffman Estates, IL

MAX PLAY SWING
INGROUND ONLY
200200417

MAX PLAY SWING
INGROUND ONLY
200202202

GENERATION
SWING SEAT
200203423
TOT SEAT
200202836
TOT SEAT
200202836

Inchworm Climber
LTTP2030M

STEPPING
STONES
200092985

STEPPING
STONES
200092985

STEPPING
STONES
200092985

SOLO
SPIN
200201870

GAZEBO

FREESTYLER
8030566

WOBBLE
SPHERE
INGROUND ONLY
200203198

DRAGONFLY
INGROUND ONLY
100011367

MAX PLAY SWING
INGROUND ONLY
200202204

MAX PLAY SWING
INGROUND ONLY
200202204

MAX PLAY SWING
INGROUND ONLY
200202202

MAX PLAY SWING
INGROUND ONLY
200202204

BELT SEAT
200202835

BELT SEAT
200202835

BELT SEAT
200202835

BELT SEAT
200202835

BELT SEAT
200202835

INCLUSIVE
SEAT
912358

INCLUSIVE
SEAT
200203433

BELT SEAT
200202835

BELT SEAT
200202835

Project:
Huntington Park
Hoffman Estates, IL
LTCPS rep:
Lani Chaplik
PARKREATION, INC.
(847) 419-7744

Ground Space: 84'-0" x 139'-0"
Protective Area: 105'-6" x 154'-6"

Drawn by: Lani Cahplik
Date: 2/10/2022
DWG Name: R0309_44602622436

LTCPS - Farmington
878 East Highway 60
Monett, Missouri 65708
Voice: 1-800-325-8828
Fax: 417-354-2273

Playground Layout
Compliance:

- ☒ ASTM F1487 - Playground
Equipment for Public Use.
☒ CPSC Handbook for Public
Playground Safety

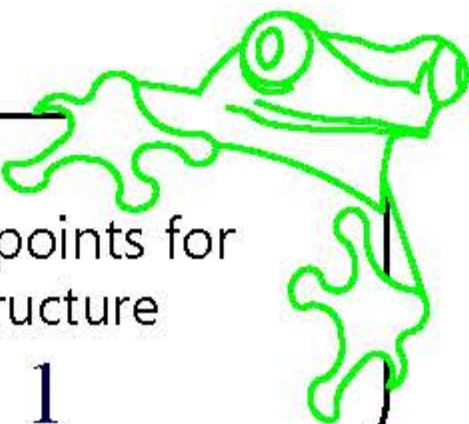
- ☒ This playground design meets the
final Access Board Regulations.



The play components identified in this
plan are IPEMA certified. The use and
layout of these components conform to
the requirements of ASTM F1487.

LEED points for
this structure

1



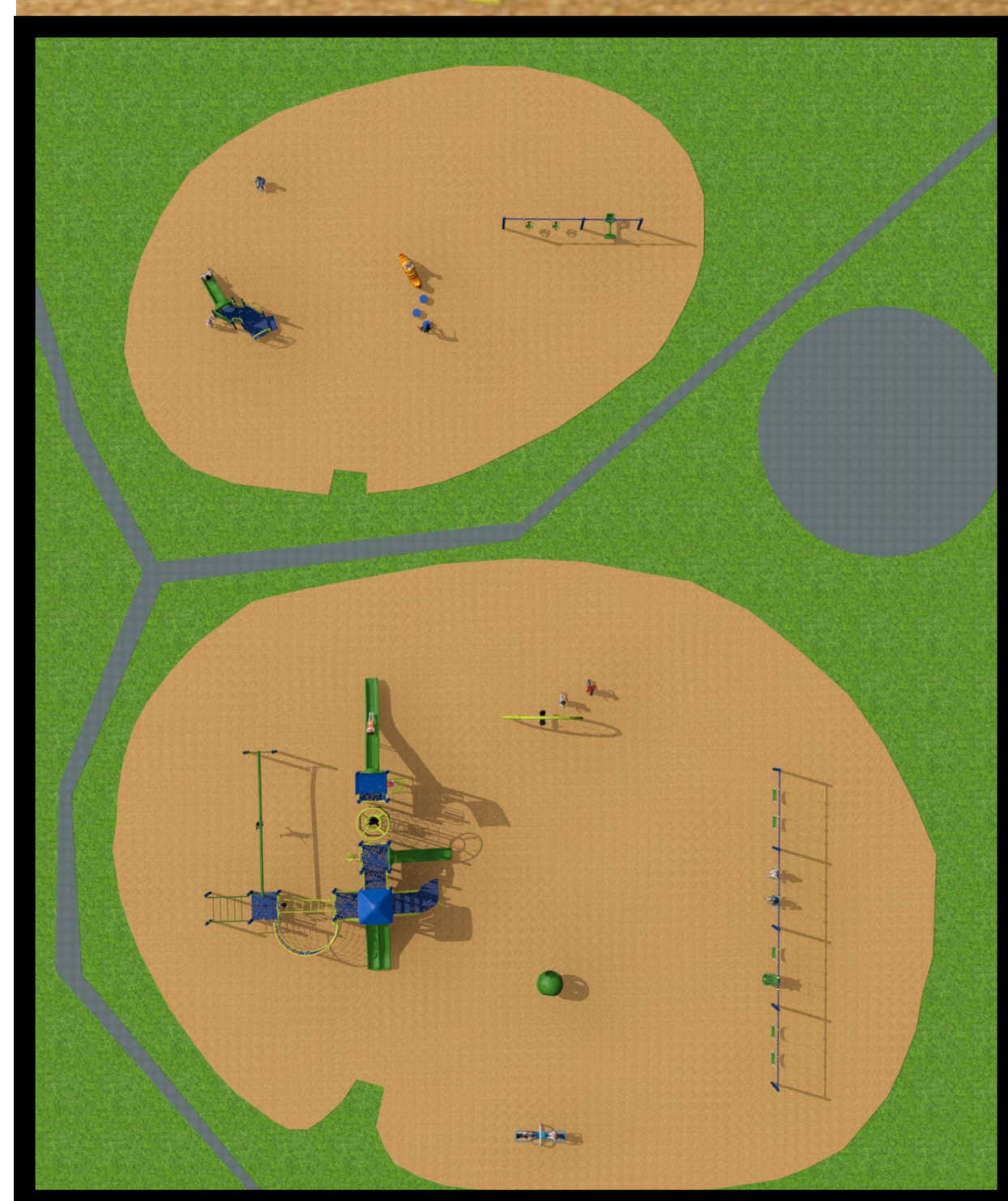
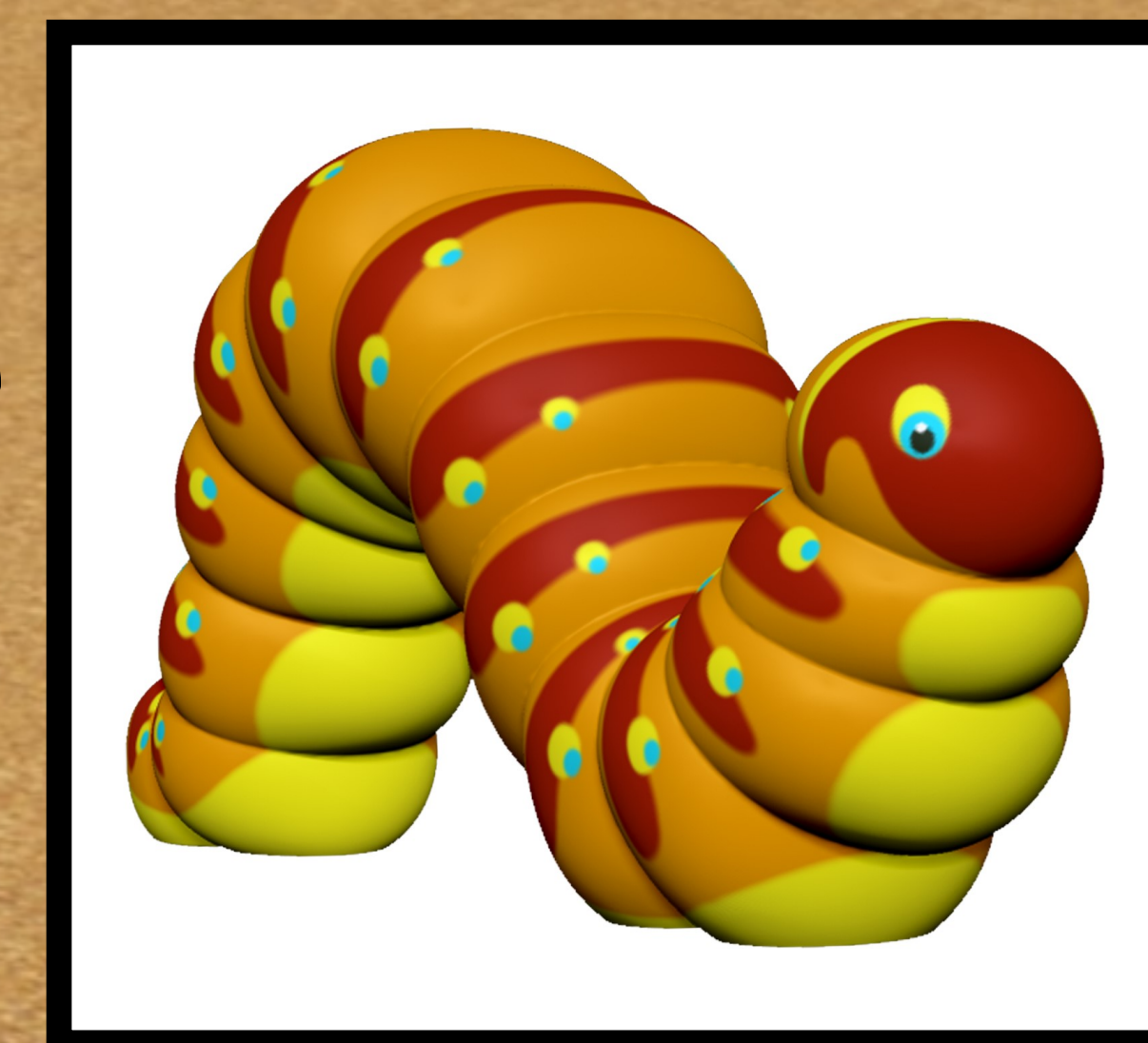


Huntington Park

2-5



Play Time
Snail



Solo Spinner





Free Styler



Curved Rope
Climbing Wall



Curved
Track
Ride



Wobble Sphere