

Triphahn Center 1685 W. Higgins Rd. Hoffman Estates, IL. 60169

Install 3 wired or wireless panic buttons as follows:

2 – Main Front desk

1 – North Side desk

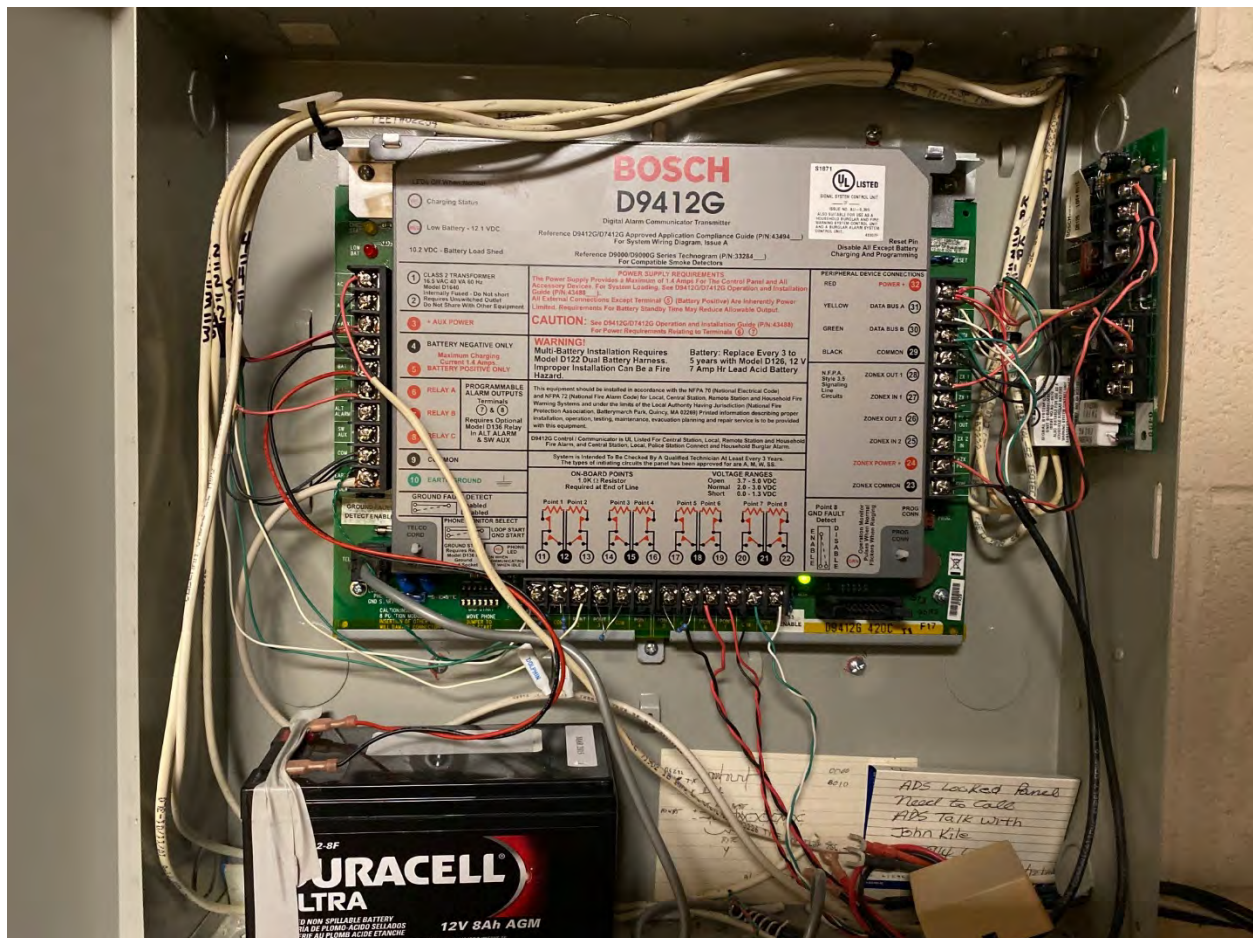
Install 1 wireless receiver in the ceiling or in a room that is half way between the two wireless panic buttons to ensure proper signal strength.

Run wire from the receiver to the Bosch/Radionics D9412 panel located in the IT room behind the front desk.

Provide 24-hour monitoring of the panic signals and full parts and labor repair service.

Assess current Alarm panel utilizing Analog phone lines and replace with utilizing our Comcast Fiber internet connection with Cellular backup or use Cellular as primary. We want to eliminate the analog phone lines for our alarms.

Current Alarm Panel: Radionics/Bosch D9412



Current Alarm Keypad:

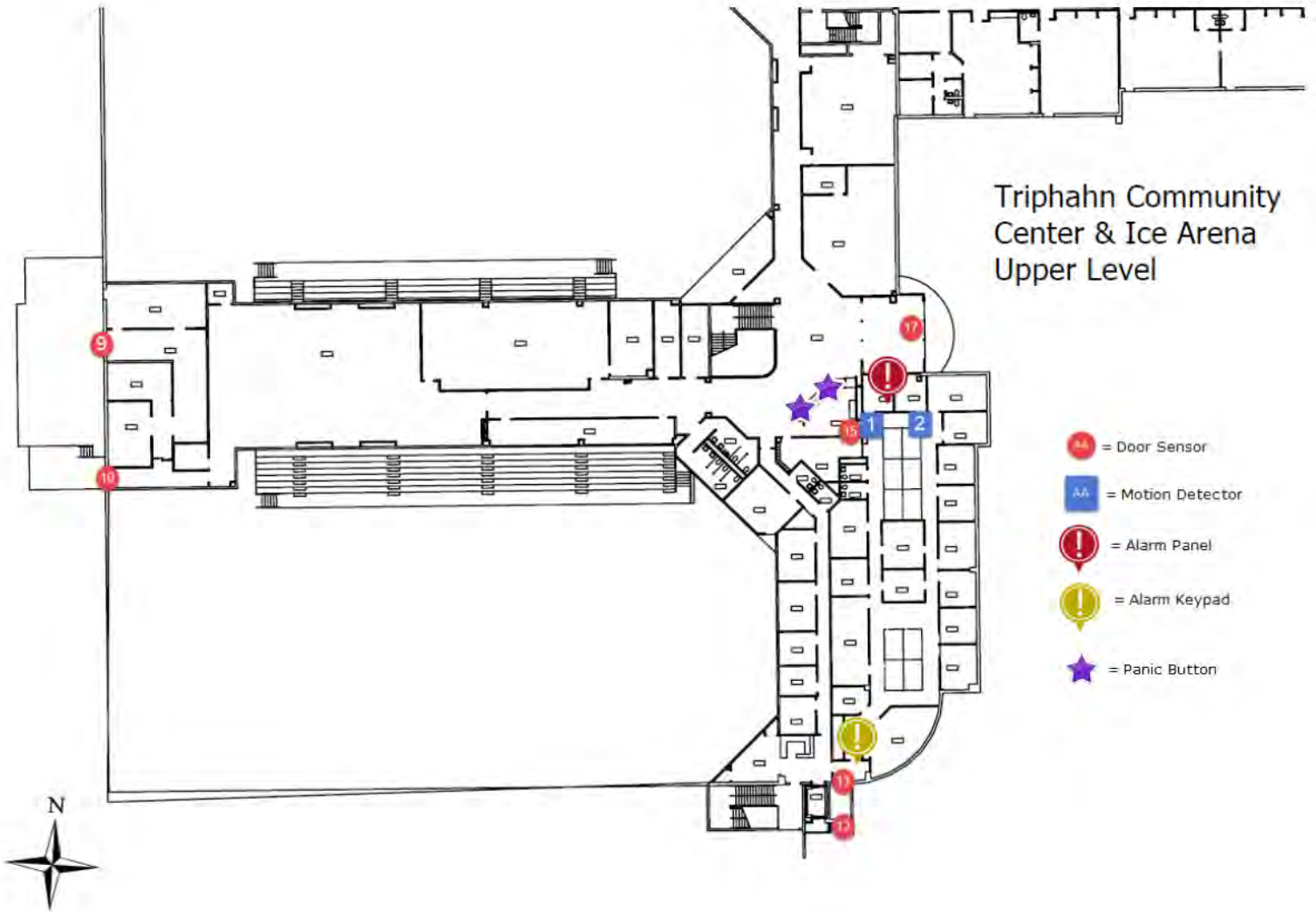


Alarm Zones:

Triphahn Center Alarm Zones			
Zone #	Description	Zone #	Description
1	West Admin Office Motion	43	ELC Hallway Exit Door E
2	East Admin Office Motion	44	ELC Hallway Exit Door W
3		45	Room 104 Exit Door
4		46	Room 102 Exit Door
5		47	Room 105 Exit Door
6		48	Room 106 Exit Door
7		49	Room 107 Exit Door
8			
9	Water Room Door		
10	Fitness Room Exit Door		
11			
12	Outer Employee Rear Entry Door		
13	Inner Employee Rear Entry Door		
14			
15	Front Desk Admin Door		
16			
17	Southside Main Entrance Doors		
18	Elevator Hallway Exit Doors		
19			
20			
21			
22			
23			
24			
25			
26			
27			
28			
29			
30	Rink 1 Emergency Exit		
31	Zam Room Overhead Door		
32	Hall Behind Zam Exit Door		
33	Compressor Room Door		
34	Preschool Hall Motion		

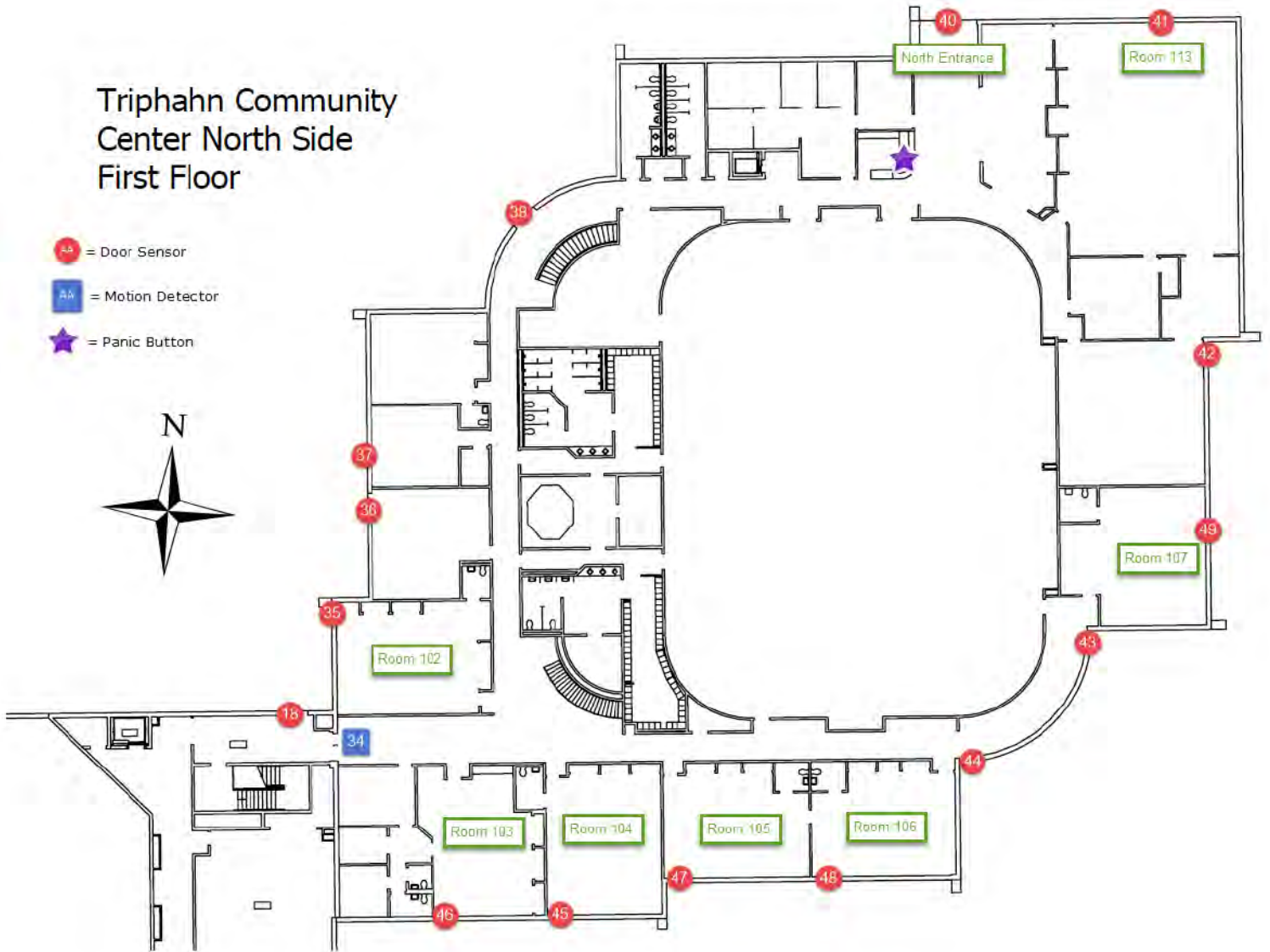
35	Room 102 Exit Door		
36	Laundry Custodian Door		
37	Mechanical Room Door		
38	Northside Hallway Emergency Exit Doors		
39			
40	Northside Main Entrance Doors		
41	Room 111 Exit Door		
42	50+ Game Room Exit Door		

Triphahn Community Center & Ice Arena Upper Level



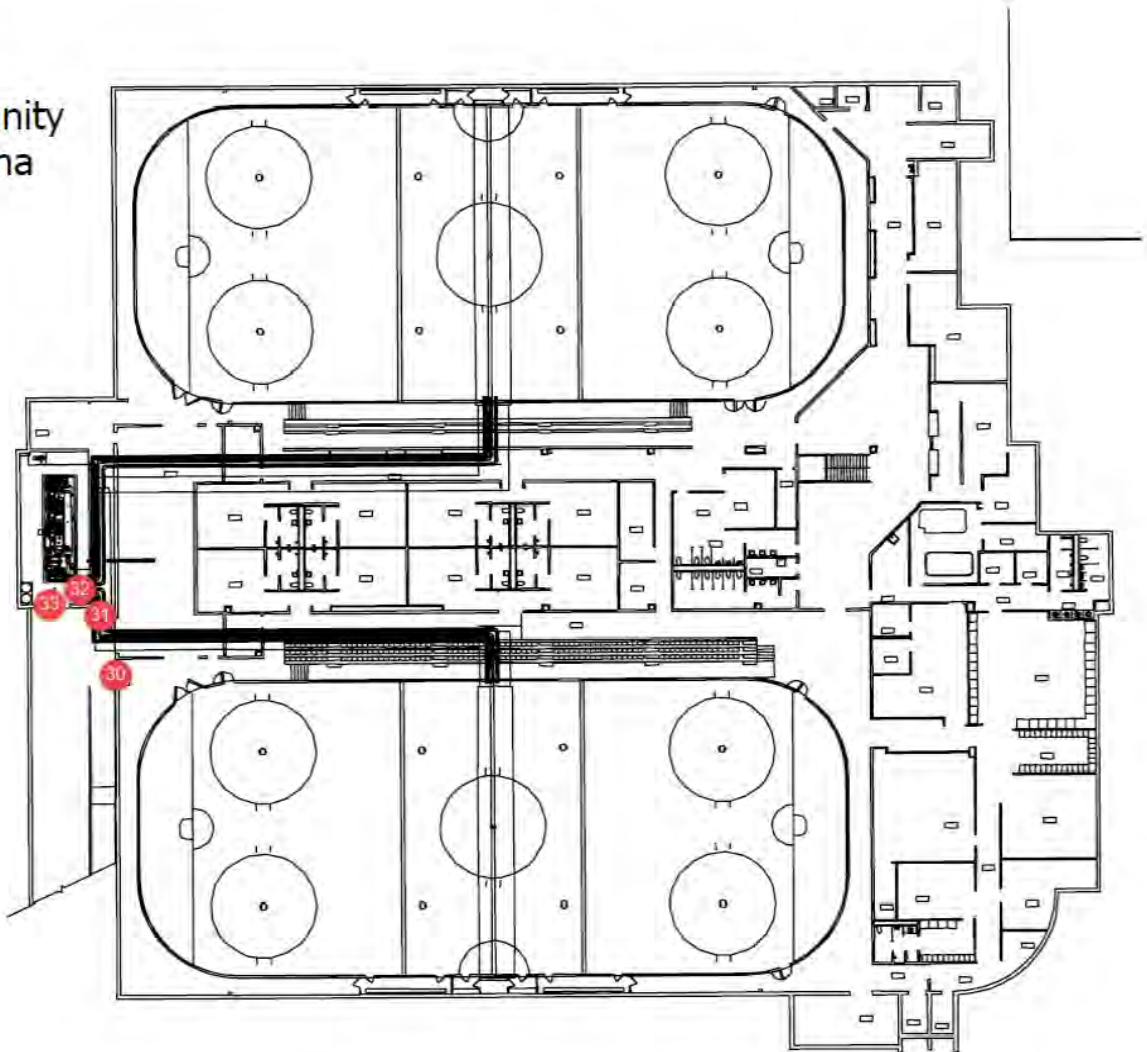
Triphahn Community Center North Side First Floor

-  = Door Sensor
-  = Motion Detector
-  = Panic Button



Triphahn Community
Center & Ice Arena
Lower Level

AA = Door Sensor



5050 Sedge Blvd. Hoffman Estates, IL. 60192

Install 2 wired or wireless panic buttons as follows:

1 – Main Front desk

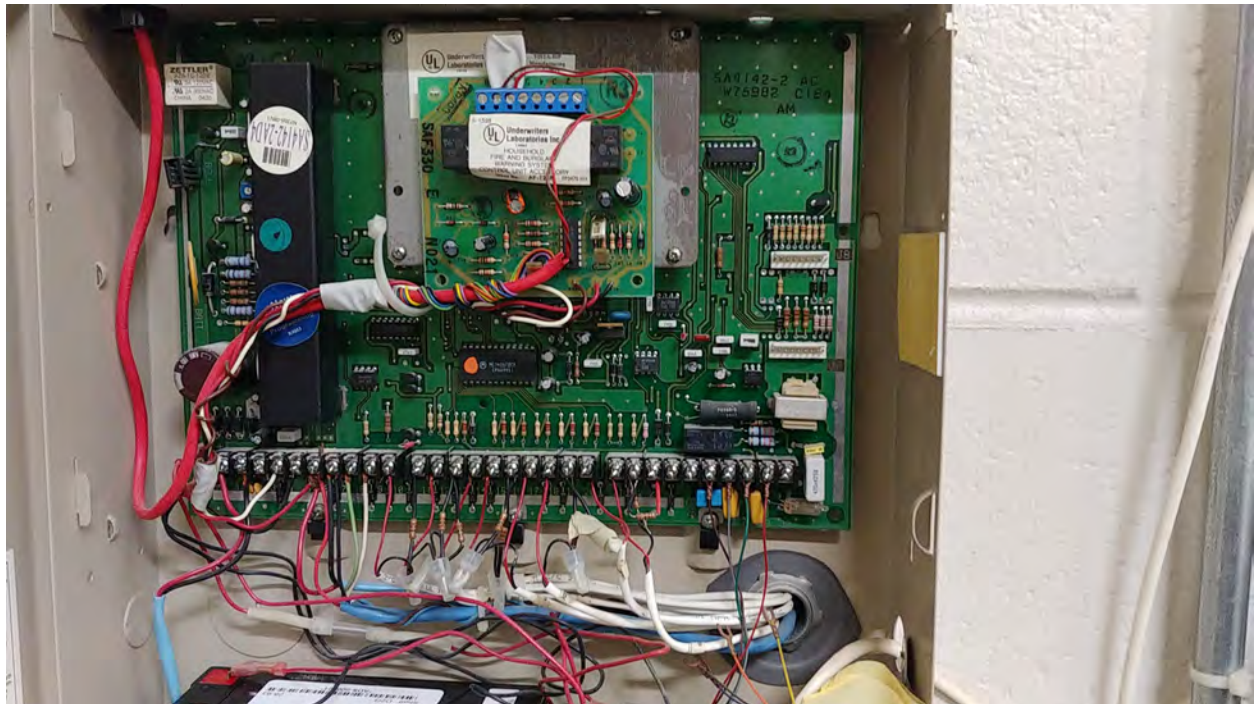
1 – Membership desk

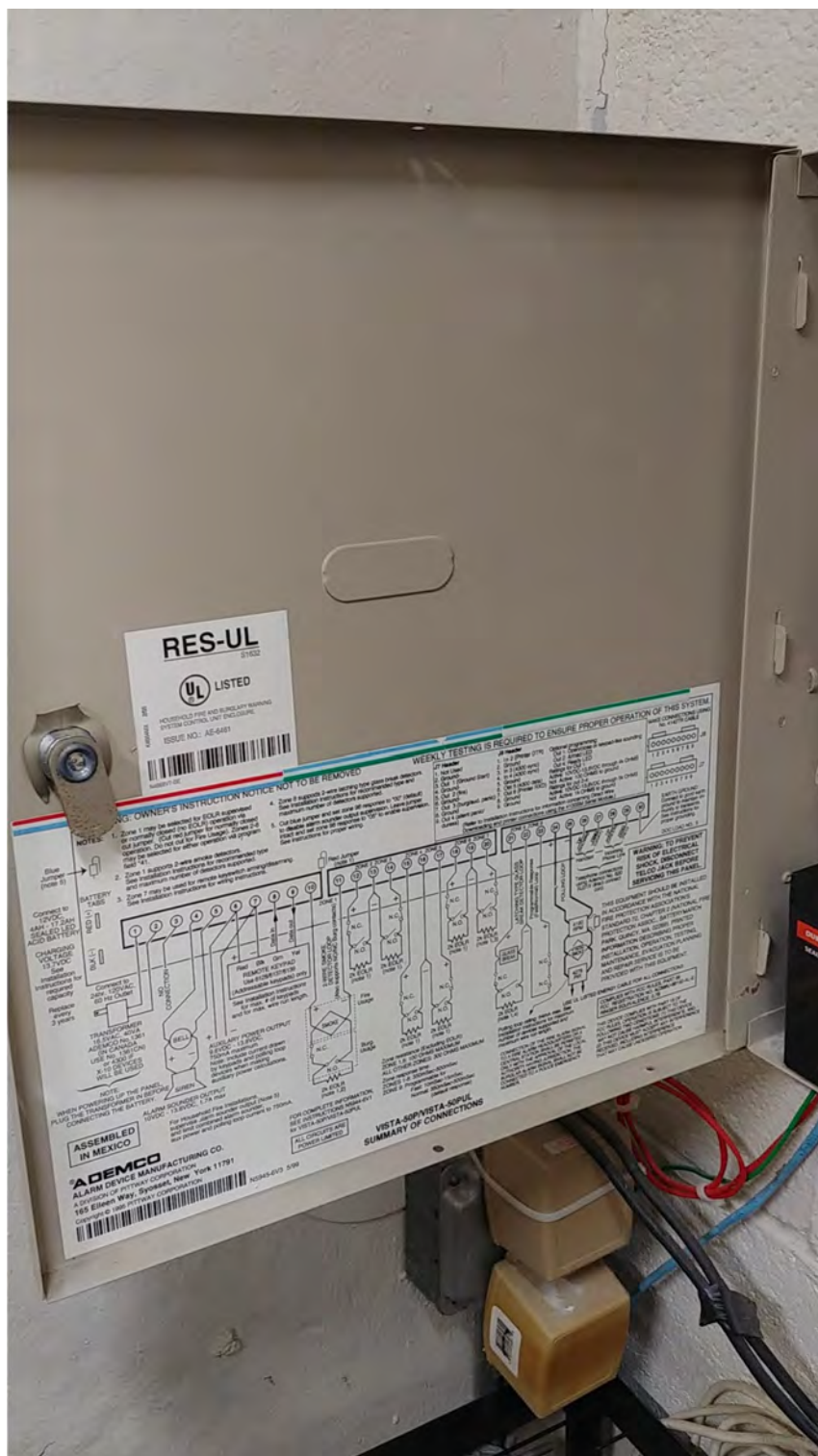
Install 1 wireless receiver in the ceiling or in a room that is half way between the two wireless panic buttons to ensure proper signal strength.

Provide 24-hour monitoring of the panic signals and full parts and labor repair service.

Assess current Alarm panel utilizing Analog phone lines and replace with utilizing our Comcast Fiber internet connection with Cellular backup or use Cellular as primary. We want to eliminate the analog phone lines for our alarms.

Current Alarm Panel: Vista50P





RES-UL



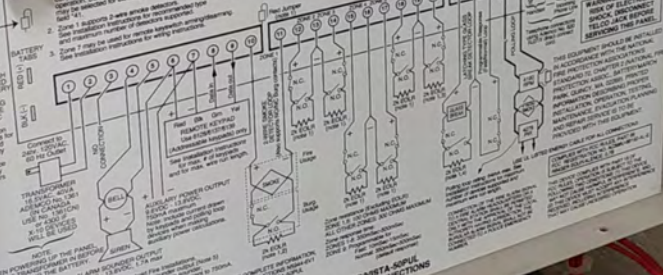
UL LISTED
NATIONAL FIRE AND MARINE INSURANCE
PROPERTY CONTROL UNIT DISCLOSURE
ISSUE NO. AG-6881

OWNER'S INSTRUCTION NOTICE NOT TO BE REMOVED

- NOTES:
- Zone 1 may be selected by SOLA system for normally closed (N.C.) or normally open (N.O.) jumper for input. Zone 1 is a jumper. Do not cut for the jumper. Zone 1 is a jumper. Do not cut for the jumper.
 - Zone 2 supports 2-wire alarm detection. See installation instructions for recommended type and size of wire.
 - Zone 3 supports 3-wire alarm detection. See installation instructions for recommended type and size of wire.
 - Zone 4 may be used for remote alarm signaling. See installation instructions for wiring instructions.

WEEKLY TESTING IS REQUIRED TO ENSURE PROPER OPERATION OF THIS SYSTEM

TEST	TEST RESULT
1. Zone 1 (N.C.)	OK
2. Zone 1 (N.O.)	OK
3. Zone 2 (N.C.)	OK
4. Zone 2 (N.O.)	OK
5. Zone 3 (N.C.)	OK
6. Zone 3 (N.O.)	OK
7. Zone 4 (N.C.)	OK
8. Zone 4 (N.O.)	OK



ASSEMBLED IN MEXICO
ADEMCO
ALARM DEVICE MANUFACTURING CO.
A DIVISION OF ADT SECURITY CORPORATION
188 E. Main St., Syosset, New York 11791
Copyright © 1991 ADT Security Corporation

VISTA-SOPVISTA-SOPUL
SUMMARY OF CONNECTIONS

Current Alarm Keypad:

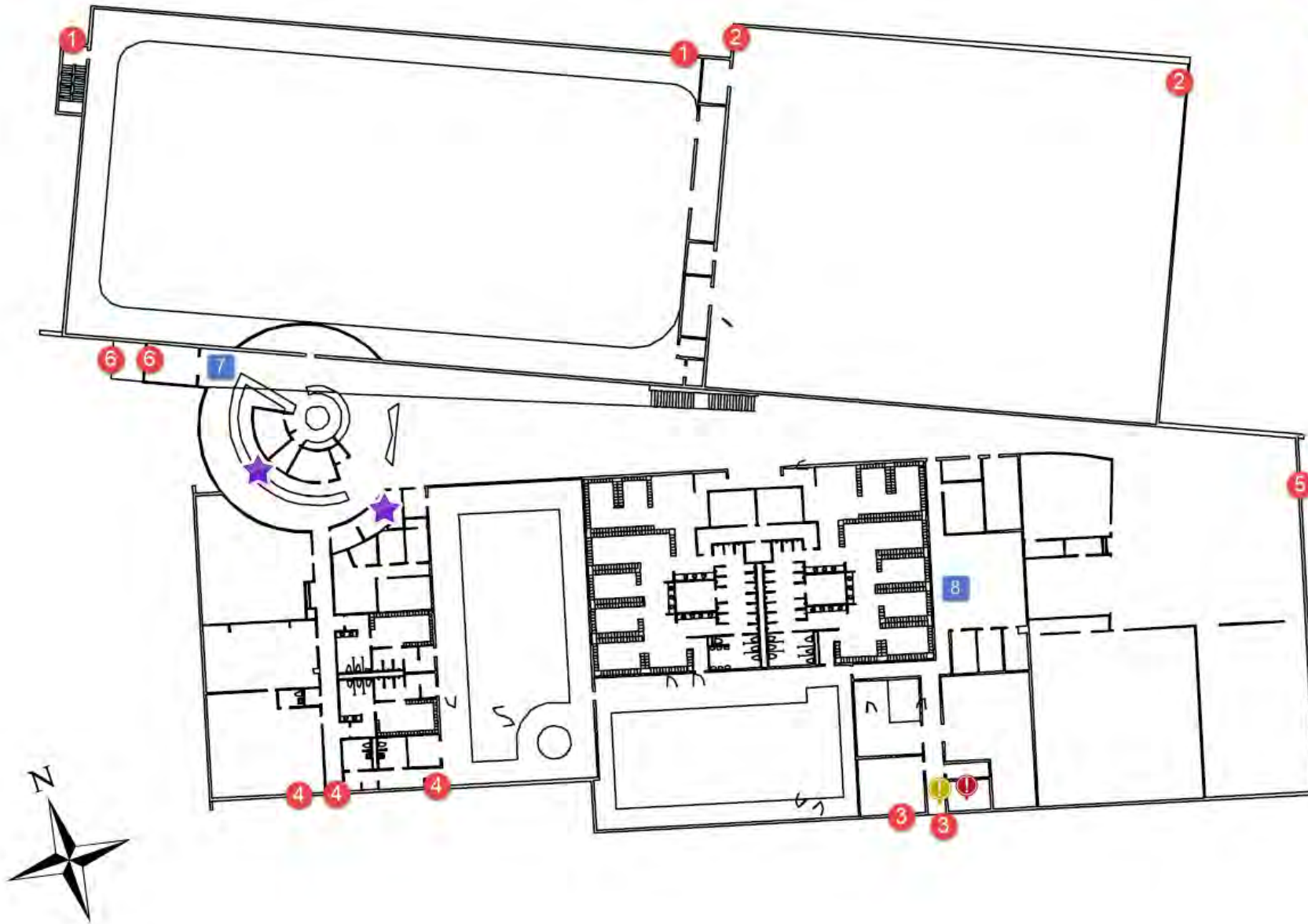


Alarm Zones:

Prairie Stone Alarm Zones	
Zone #	Description
1	BASKETBALL
2	TENNIS
3	REAR ENT
4	SW DOORS
5	FITNESS
6	MAIN ENT
7	LOBBY
8	ADMIN

The Club at Prairie Stone

-  = Door Sensor
-  = Motion Detector
-  = Panic Button
-  = Alarm Panel
-  = Alarm Keypad



3600 Lexington Drive Hoffman Estates, IL. 60192

Install 2 wired or wireless panic buttons as follows:

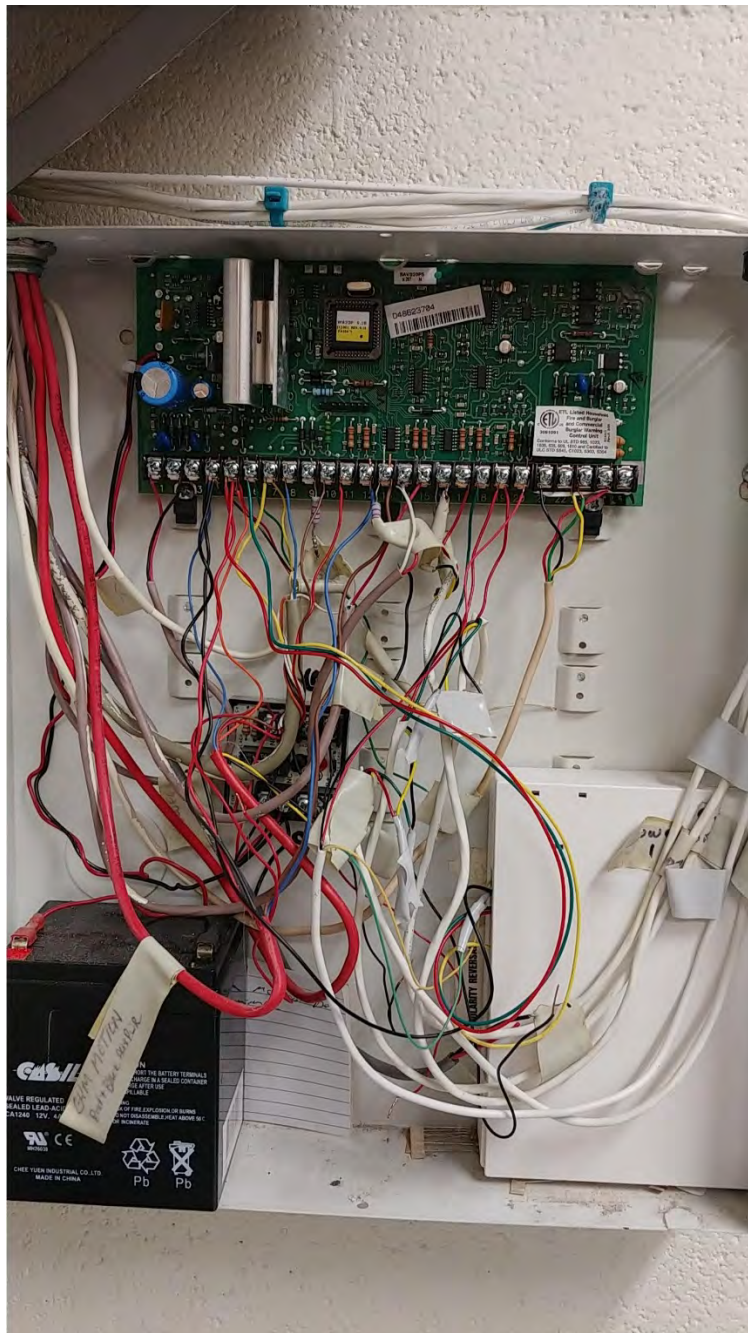
2 – Main Front desk

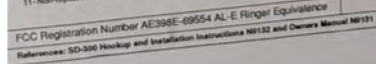
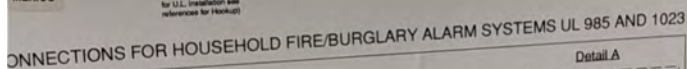
Install 1 wireless receiver in the ceiling or in a room that is half way between the two wireless panic buttons to ensure proper signal strength.

Provide 24-hour monitoring of the panic signals and full parts and labor repair service.

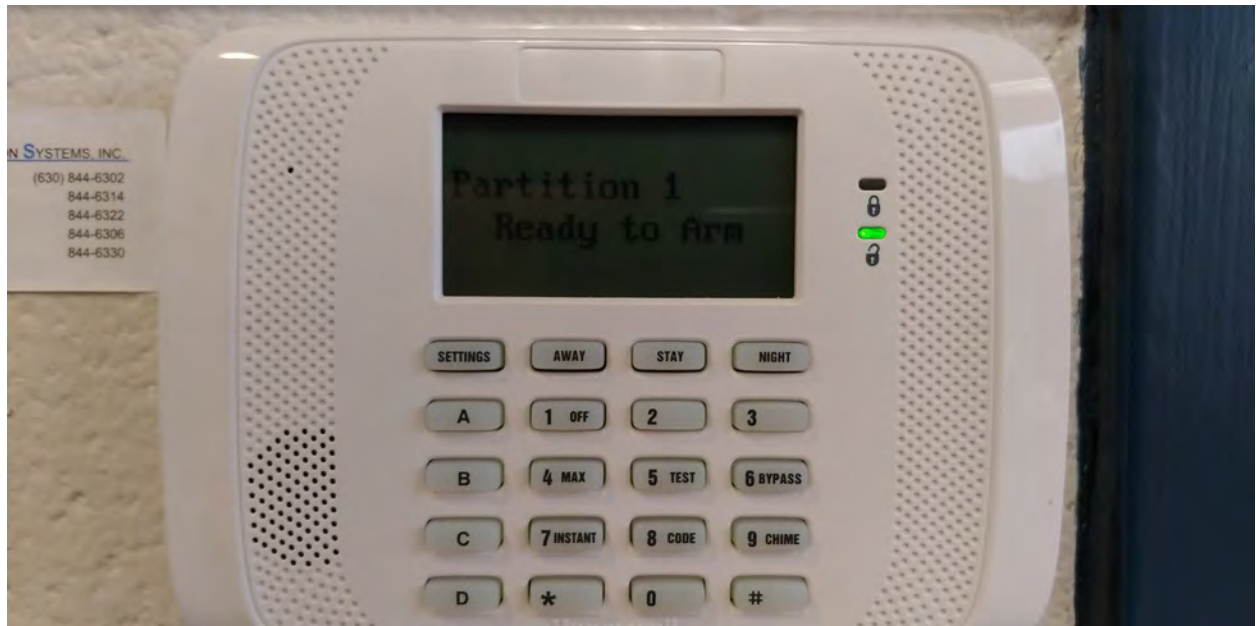
Assess current Alarm panel utilizing Analog phone lines and replace with utilizing our Comcast Fiber internet connection with Cellular backup or use Cellular as primary. We want to eliminate the analog phone lines for our alarms.

Current Alarm Panel: **FA168CPS**





Current Alarm Keypad:

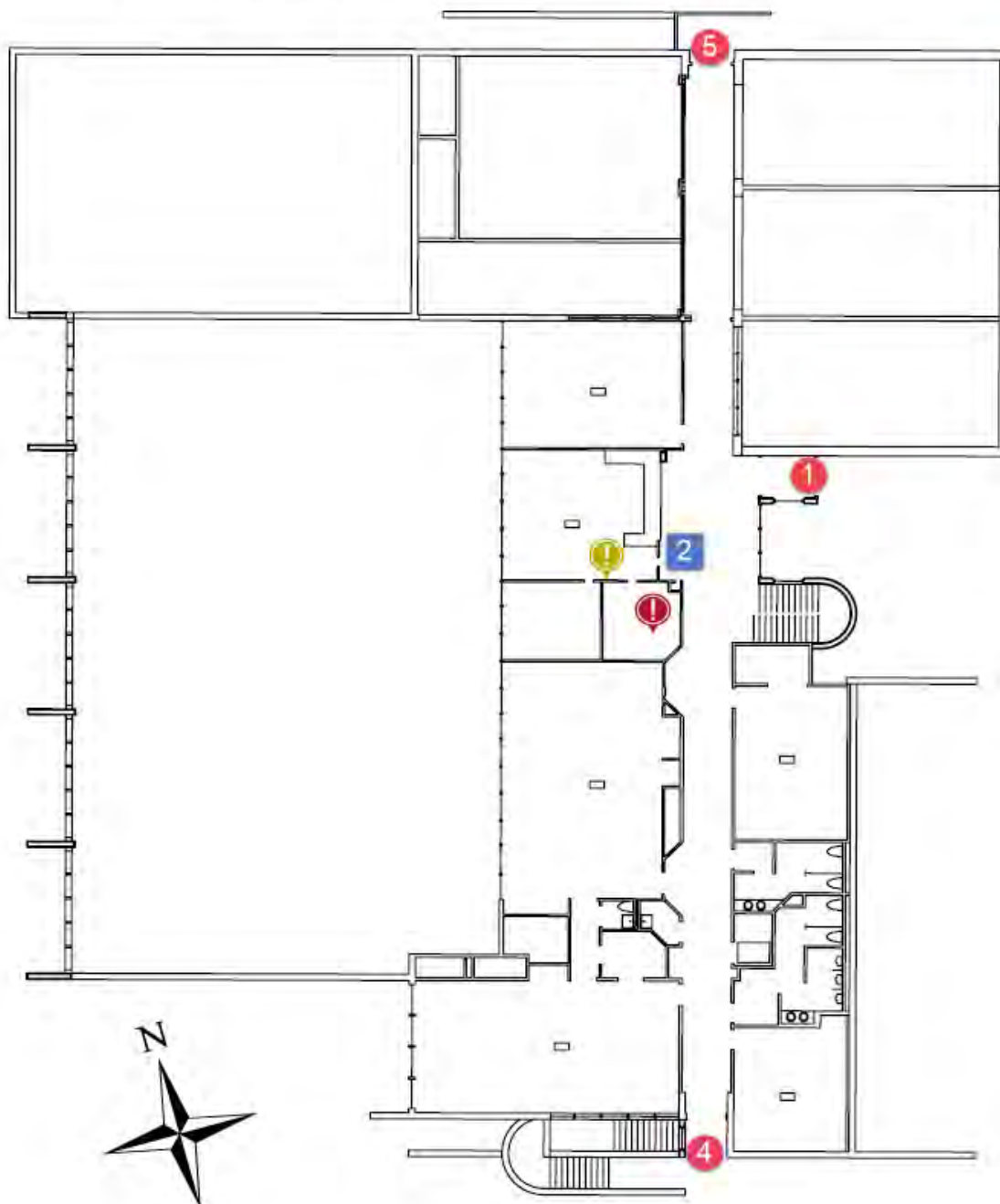


Alarm Zones:

Willow Recreation Alarm Zones	
Zone #	Description
1	FRONT DOOR
2	HALL MOTION
3	BASEMENT MOTION
4	SOUTH UPPER DOOR
5	NORTH UPPER DOOR
6	NORTH LOWER DOOR
7	Mini GYM DOORS
8	MAIN GYM DOORS
9	South Lower Doors

Willow Recreation Center Ground Floor

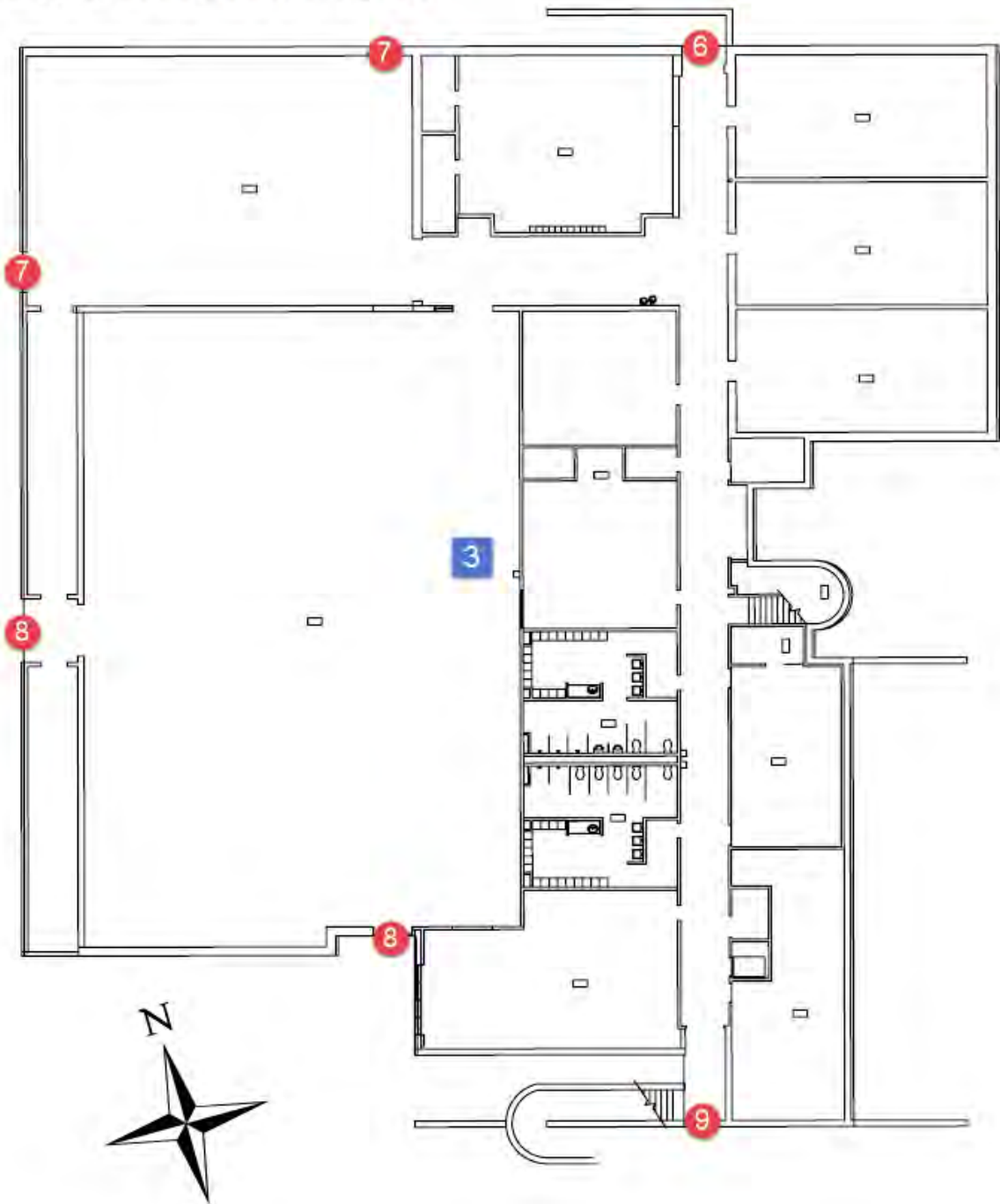
-  = Door Sensor
-  = Motion Detector
-  = Panic Button
-  = Alarm Panel
-  = Alarm Keypad



Willow Recreation Center

Basement Floor

-  = Door Sensor
-  = Motion Detector
-  = Panic Button
-  = Alarm Panel
-  = Alarm Keypad

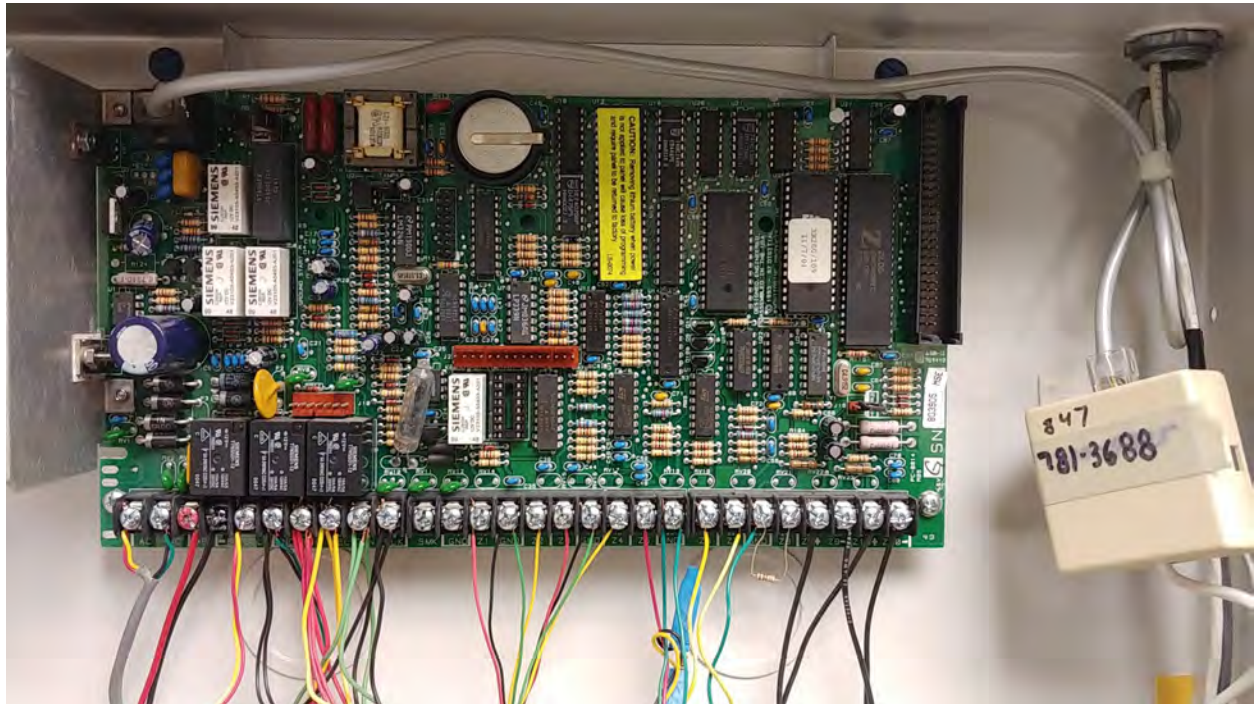


2352 Hassell Rd. Hoffman Estates, IL. 60195

Provide 24-hour monitoring of the panic signals and full parts and labor repair service.

Assess current Alarm panel utilizing Analog phone lines and replace with utilizing our Comcast Fiber internet connection with Cellular backup or use Cellular as primary. We want to eliminate the analog phone lines for our alarms.

Current Alarm Panel: DMP XR-200



MODEL XR200 WIRING DIAGRAM

Refer to the XR200 Installation Guide (LT-0197) for a complete description of wiring connections.
Refer to the XR200 Programming Manual (LT-0196) for complete programming instructions.

OF SERVICE

ACT, MUX, Type 1, 2,
ervice may be provided.
to 23.6.

Station Signaling
Model 893 DACT. Also
with Radionics D177
ions 23.9 and 25.5.
ual fire alarm,
arm, sprinkler
ater flow alarm.

Be AA Central Station
or HST communication.
provided with dialer
and DMP 350A Enclosure.

Safe and Vault Service
ure. See section 20.9.
Household Fire and Grade A
ary.

ide A Local, Police Station
rticle, and Proprietary
communication and
Grade AA with HPX,
communication. See
20.3, and 20.6.

rmers:
Plug into
120 VAC
Wire under
not
controlled by switch.

Maximum AC wire distance
with 18 gauge wire: 70 feet
with 22 gauge wire: 40 feet

Power Supply
x, charging current,
VDC rechargable
IP Model 367.
y 3 to 5 years.

inal
t 1.5 Amps
off time is 5

770, and
t to 16 VDC.

to 16 VDC
and 791
to 16 VDC.

Keyswitch Arming
can be connected to any loop.
See section 13.4.

Refer to LT-0164 for a list of approved 4-wire
smoke detectors and power supervision relays.

This equipment should be installed in accordance with Chapter 2 of the National
Fire Alarm Code, ANSI/NFPA 72-1991, National Fire Protection Association,
Batterymarch Park, Quincy, MA 02269. Printed information describing proper
installation, operation, testing, maintenance, evacuation planning, and repair
service is to be provided with this equipment.

POWER LIMITED

All circuits on the Model XR200 comply with the requirements
for inherent power limitation and are Class 2 except the red battery wire.

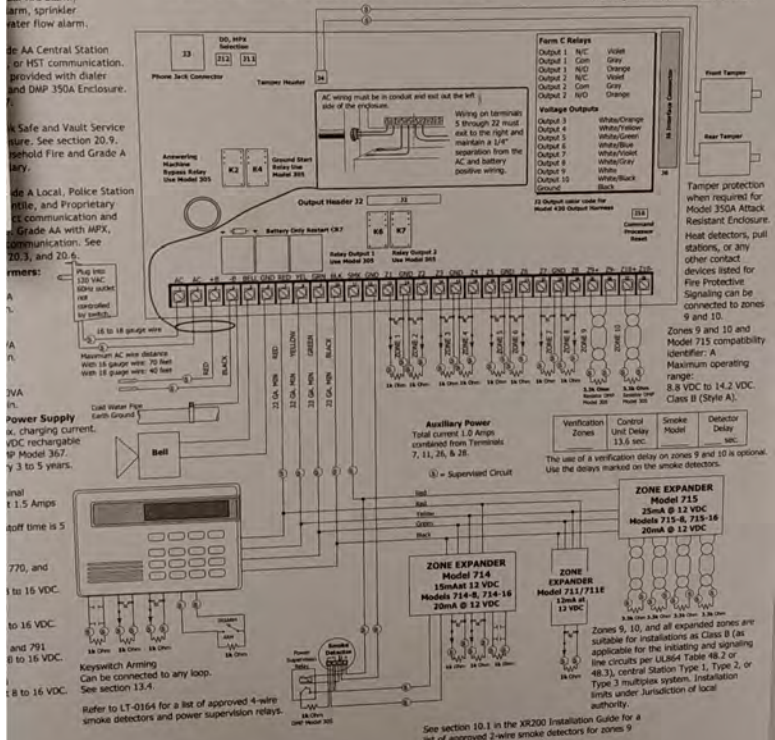
NFPA 72

NFPA 72 OPERATING INSTRUCTIONS

The operating instructions sheet (LT-0352
and in the back of LT-0197) must be attach
to the control unit or framed and located
adjacent to the control unit or keypad.

HOUSEHOLD FIRE WIRING

UL recognized limited energy cable must be
used for connection of all initiating,
indicating, and supplementary devices.



WARNING

INIT MAY BE PROGRAMMED TO USE AN ALARM VERIFICATION
RE THAT RESULTS IN DELAY OF THE SYSTEM ALARM SIGNAL FROM
ICATED CIRCUITS. THE TOTAL DELAY (CONTROL UNIT PLUS SMOKE
TORS) SHALL NOT EXCEED 60 SECONDS. NO OTHER SMOKE
TORS SHALL BE CONNECTED TO THESE CIRCUITS UNLESS APPROVED
E LOCAL AUTHORITY HAVING JURISDICTION.

See section 10.1 in the XR200 Installation Guide for a
list of approved 2-wire smoke detectors for zones 9
and 10 and 715 Zone Expanders.

In all applications where more than one wire
is under a terminal, the wire must be cut and
not looped around the screw terminal.

LT-0204 (10/01)

Current Alarm Keypad:

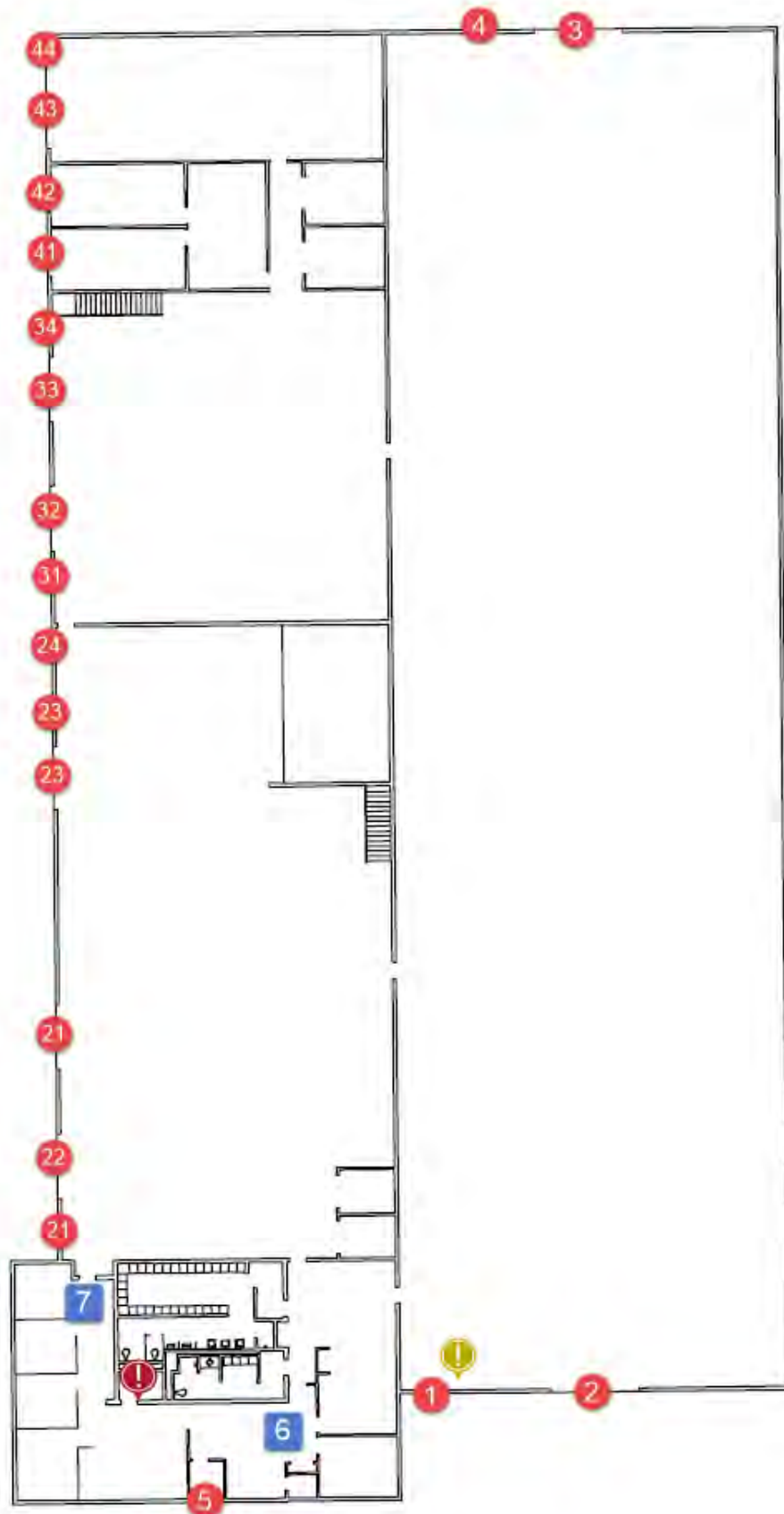







Alarm Zones:

Parks Maintenance Alarm Zones

Zone #	Description	Zone #	Description
1	FLEET STRG S. DR	43	WASH AREA OVHD
2	FLEET STRG S. OVHD	44	WASH AREA DR
3	FLEET STRG N. OVHD		
4	FLEET STRG N. DR		
5	MAIN ENTR. DR		
6	OFFICE N. MOTION		
7	OFFICE S. MOTION		
8			
9			
10			
11			
12			
13			
14			
15			
16			
17			
18			
19			
20			
21	BUILDING TECH OVHD		
22	BUILDING TECH DR		
23	WOOD SHOP OVHD		
24	WOOD SHOP DR		
25			
26			
27			
28			
29			
30			
31	AUTOS S. DR		
32	AUTOS S. OVHD		
33	AUTOS N. OVHD		
34	AUTOS N. DR		
35			
36			
37			
38			
39			
40			
41	BASEBALL ROOM		
42	FERTILIZER ROOM		

Parks Maintenance Facility



-  = Door Sensor
-  = Motion Detector
-  = Panic Button
-  = Alarm Panel
-  = Alarm Keypad



1400 Poplar Creek Drive Hoffman Estates, IL. 60169

Install 4 wired or wireless panic buttons as follows:

1 – Front office desk

1 – Pro Shop desk

1 – 2nd Floor Banquet bar

1 – Main bar & grill

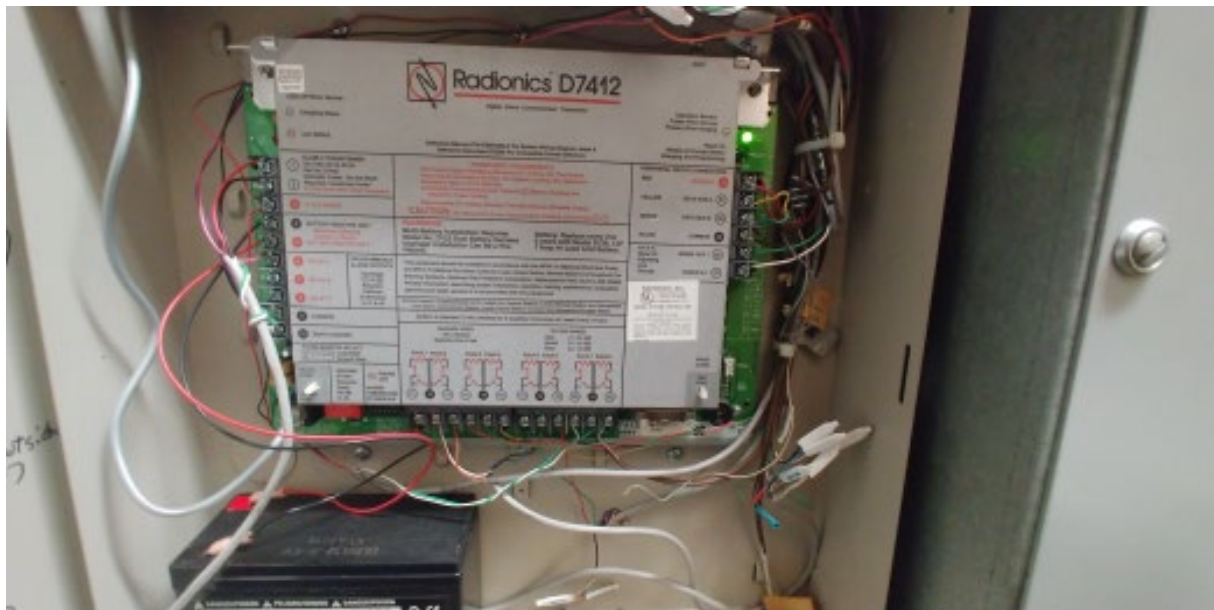
Install at least 1 wireless receiver in the ceiling or in a room between the wireless panic buttons to ensure proper signal strength.

Run wire from the receiver to the Bosch/Radionics D7412 panel located near the Fairway bar.

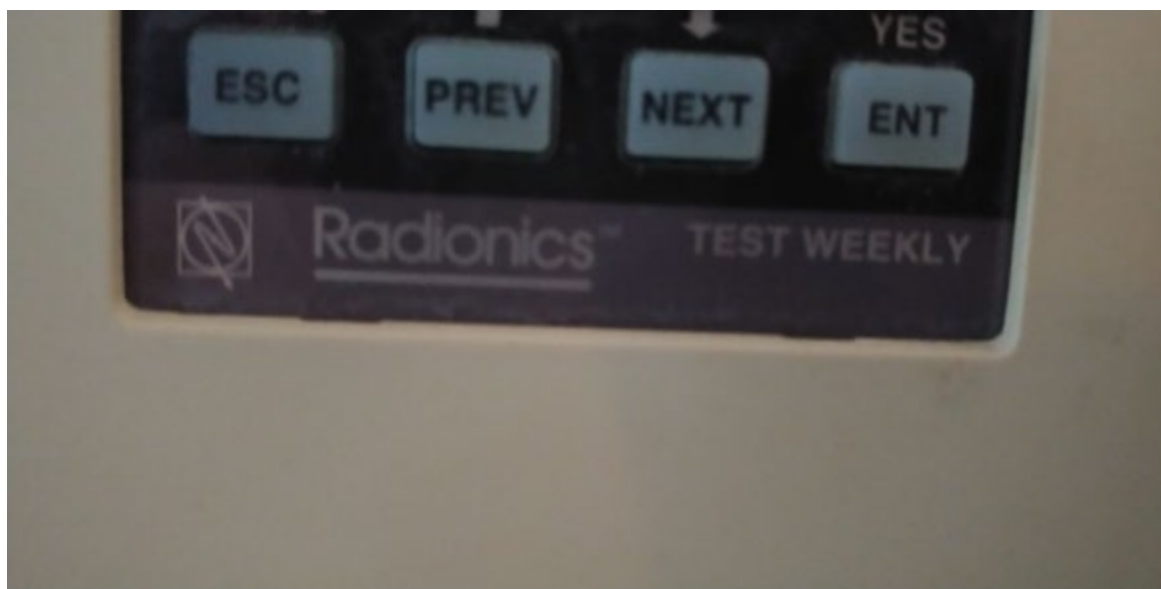
Provide 24-hour monitoring of the panic signals and full parts and labor repair service.

Assess current Alarm panel utilizing Analog phone lines and replace with utilizing our Comcast Fiber internet connection with Cellular backup or use Cellular as primary. We want to eliminate the analog phone lines for our alarms.

Current Alarm Panel: Radionics/Bosch D7412



Current Alarm Keypad:

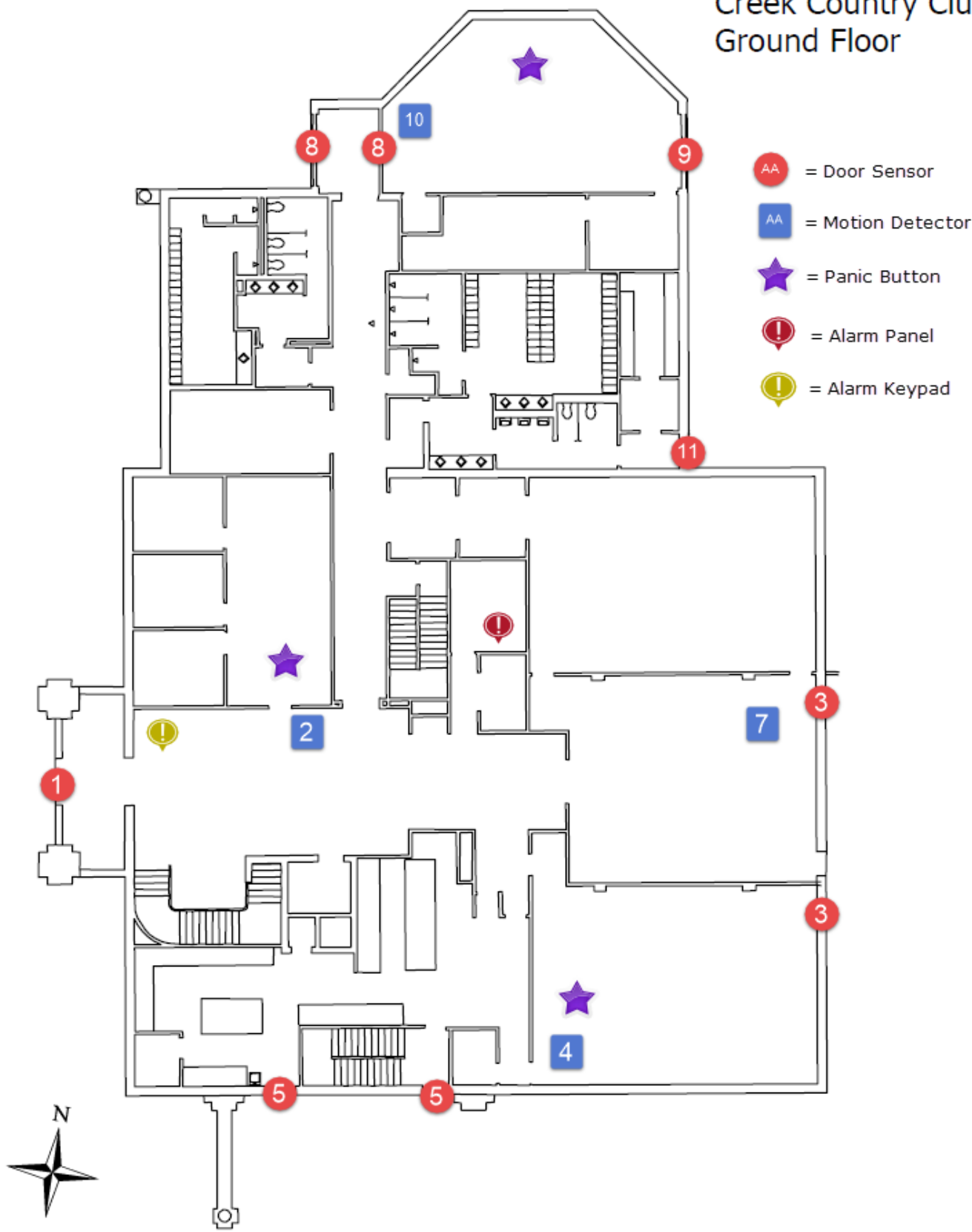


Alarm Zones:

Bridges of Poplar Creek Alarm Zones

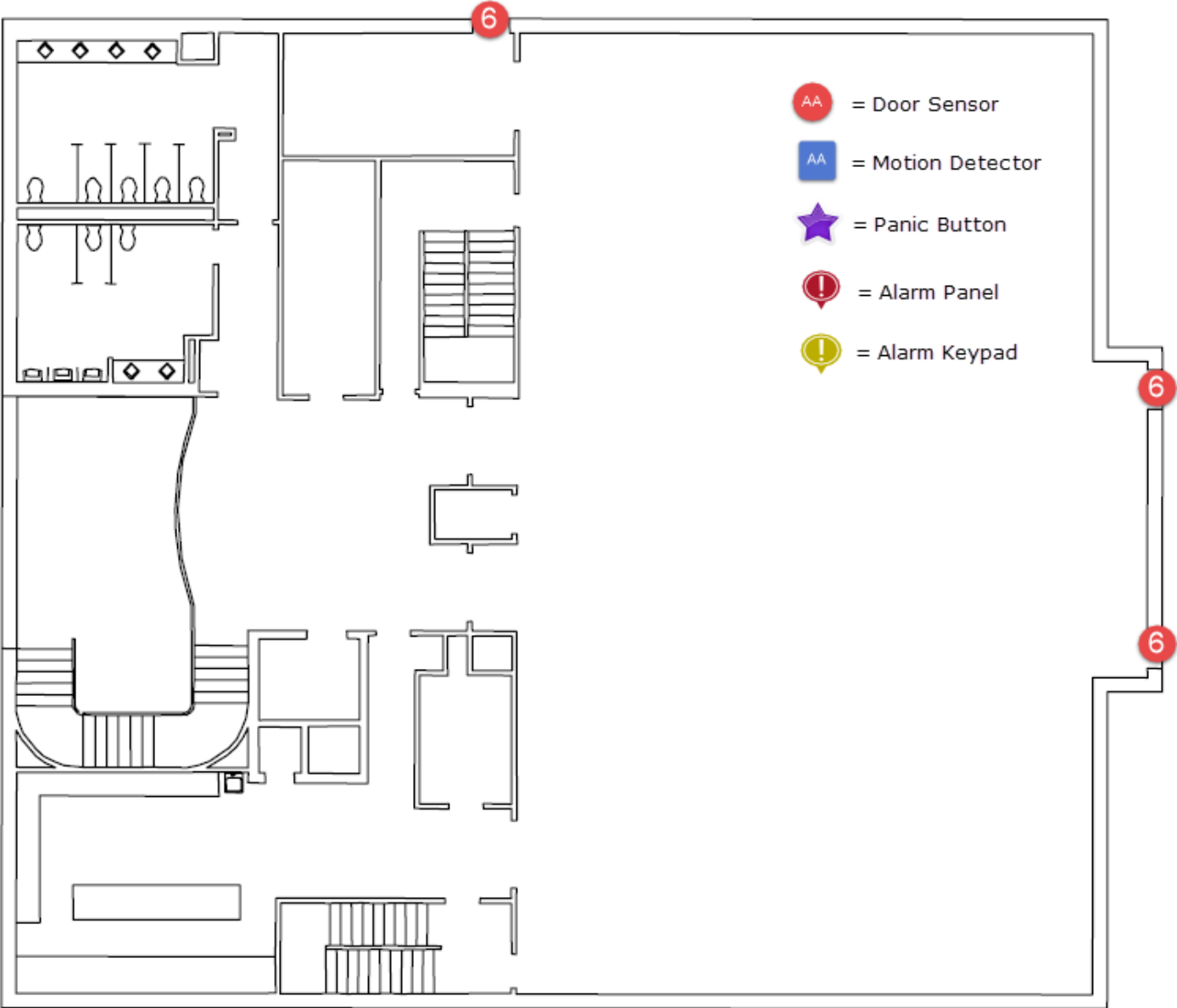
Zone #	Description
1	FRONT
2	LOBBY
3	DINING/BAR
4	BAR
5	KITCHEN
6	2ND FL
	DINING
7	ROOM
	END OF PRO
8	SHOP
9	PRO SHOP
10	PRO SHOP
	HALFWAY
11	HOUSE
12	CART ROOM

Bridges of Poplar
Creek Country Club
Ground Floor








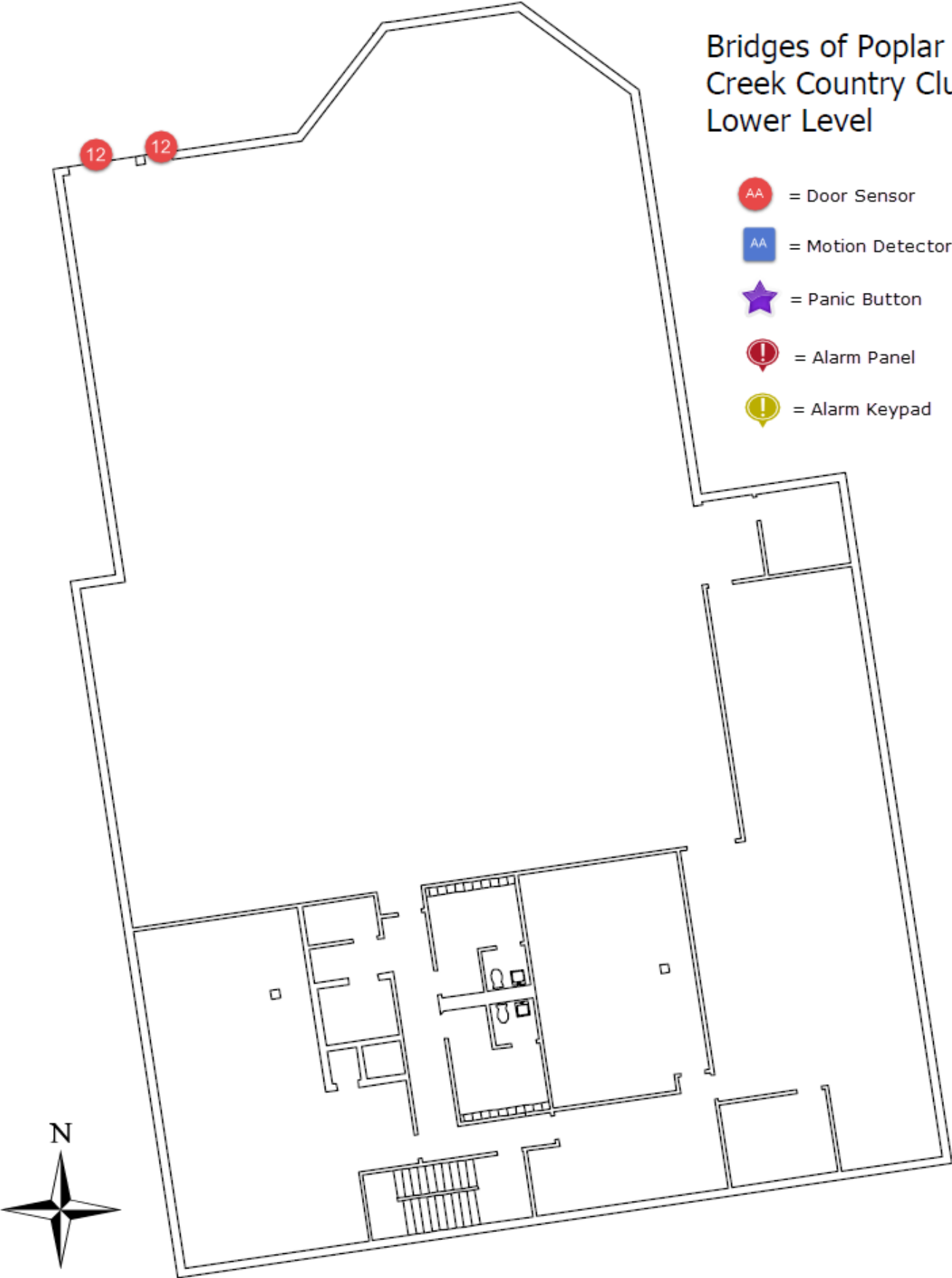
Bridges of Poplar Creek Country Club

Second Floor



Bridges of Poplar
Creek Country Club
Lower Level

-  = Door Sensor
-  = Motion Detector
-  = Panic Button
-  = Alarm Panel
-  = Alarm Keypad



1450 (BPC Maintenance Building) Poplar Creek Drive Hoffman Estates, IL. 60169

There is old hardware when an alarm was present but there is currently no active alarm system at our Maintenance building. We want to eliminate analog phone lines for our alarms. Assess with the possibility of utilizing our Comcast Fiber internet connection with Cellular backup or use Cellular as primary.

Example:

Install a DMP XT150 burglar alarm panel with standby rechargeable power supply.

Install 2 on/off keypads. One of the keypads shall be a full function keypad to allow authorized users to arm/disarm the entire system. The second keypad shall be programmed to arm/disarm only the Park District Storage area.

Install wireless door contacts on the 5 perimeter main doors.

Install wireless door contacts on the 6 overhead doors.

Install an AES wireless radio to monitor the burglar alarm signals.

Provide 24-hour, full parts and labor repair service on the system.

Current Alarm Panel: Non-Functioning

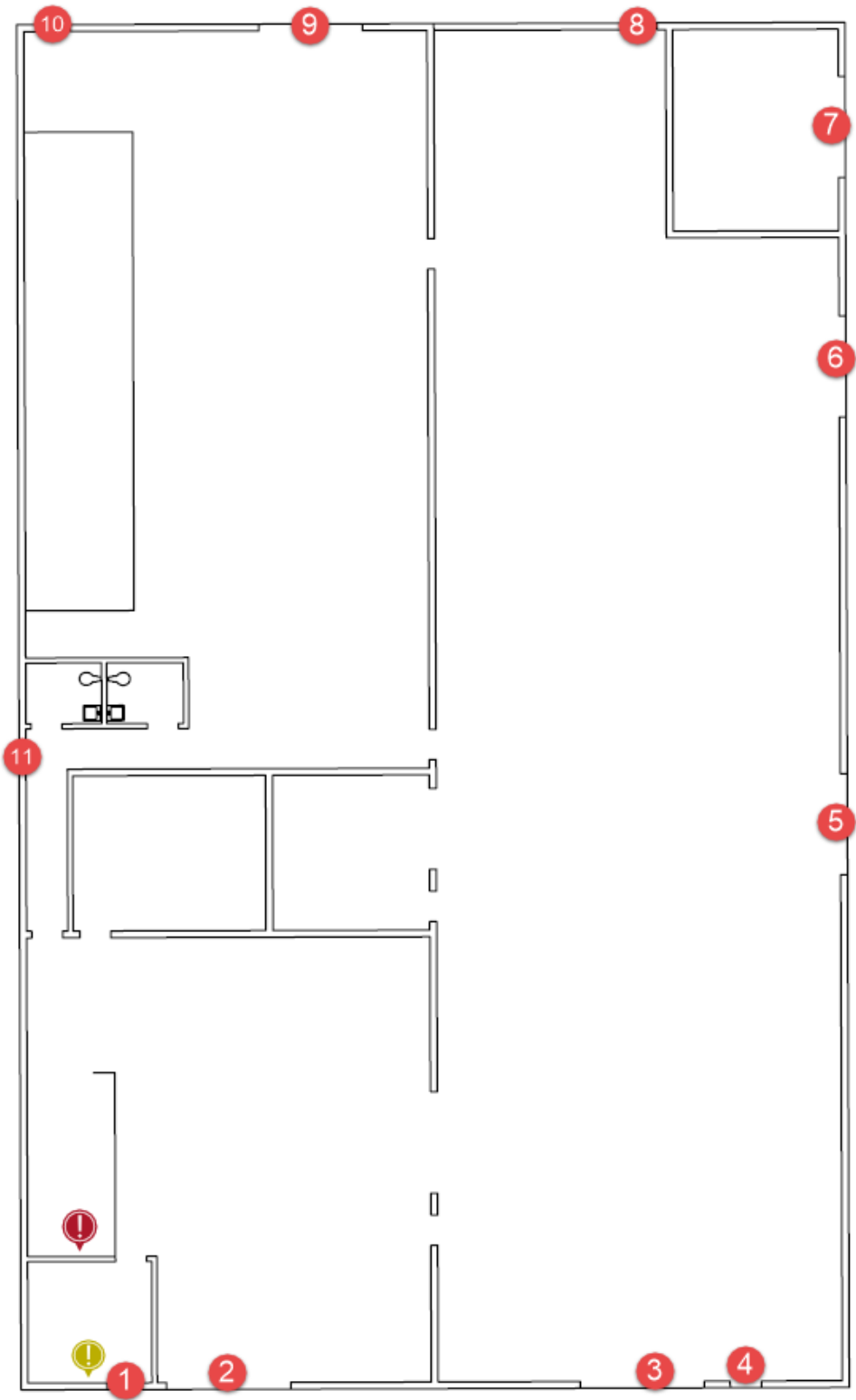


Current Alarm Keypad: Non-Functioning



Current Alarm Zones: Non-Functioning, see Map

Bridges of Poplar
Creek Country Club
Golf Maintenance



- AA = Door Sensor
- AA = Motion Detector
- ★ = Panic Button
- ! = Alarm Panel
- ! = Alarm Keypad



1300 Moon Lake Blvd. (BATHHOUSE & Concession) Hoffman Estates, IL. 60169

Install 2 wired or wireless panic buttons as follows:

1 – Cashier desk

1 – Manager's Office

Install 1 wireless receiver in the ceiling or in a room that is half way between the two wireless panic buttons to ensure proper signal strength.

Provide 24-hour monitoring of the panic signals and full parts and labor repair service.

Assess current Alarm panel utilizing Analog phone lines and replace with utilizing our Comcast Fiber internet connection with Cellular backup or use Cellular as primary. We want to eliminate the analog phone lines for our alarms.

Current Alarm Panel: **DMP XR-10**

Current Alarm Keypad:

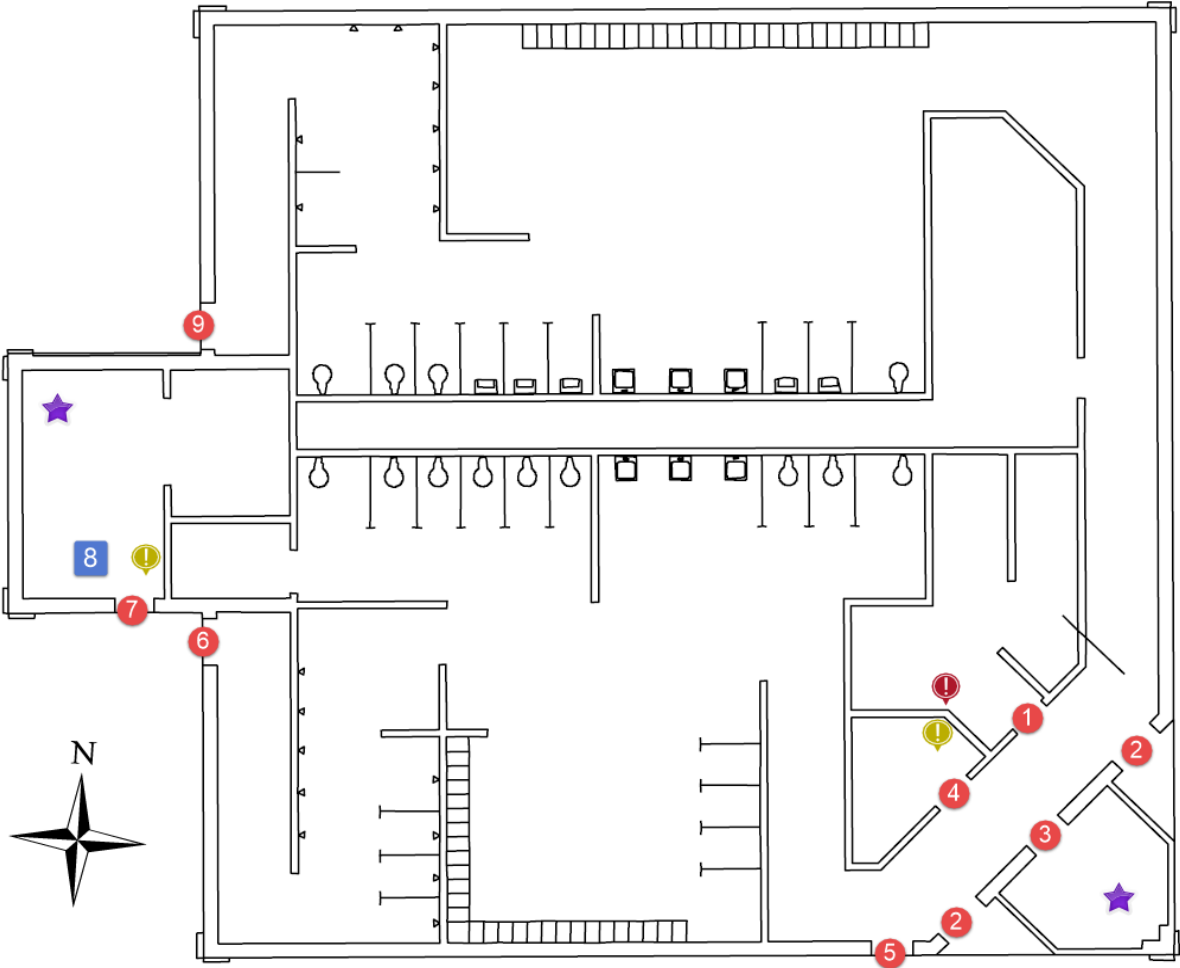


Alarm Zones:

Seascape (BATHHOUSE & Concession)
Alarm Zones






Zone #	Description
1	MECHANICAL ROOM
2	OVERHEAD ADMISSION
3	ADMISSION DOOR
4	OFFICE ENTRY
5	FRONT DOOR
6	WOMENS NORTH EAST DOOR
7	FIRST AID ENTRY
8	FIRST AID MOTION
9	MENS NORTH EAST DOOR
10	CONCESSION MOTION

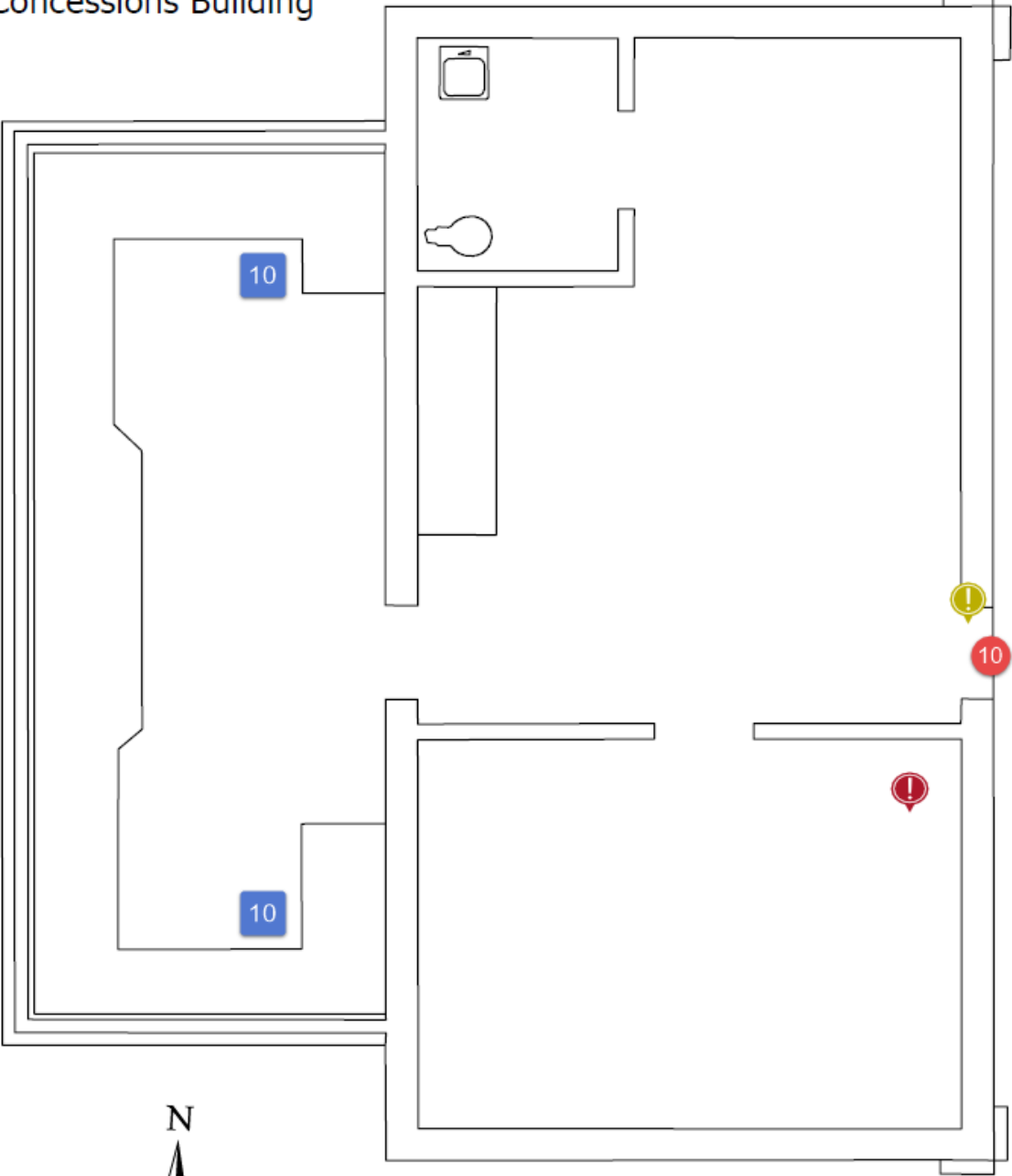
Seascape Family
Aquatic Center
Bath House



- AA = Door Sensor
- AA = Motion Detector
- ★ = Panic Button
- ! = Alarm Panel
- ! = Alarm Keypad

Seascape
Concessions Building

-  = Door Sensor
-  = Motion Detector
-  = Panic Button
-  = Alarm Panel
-  = Alarm Keypad

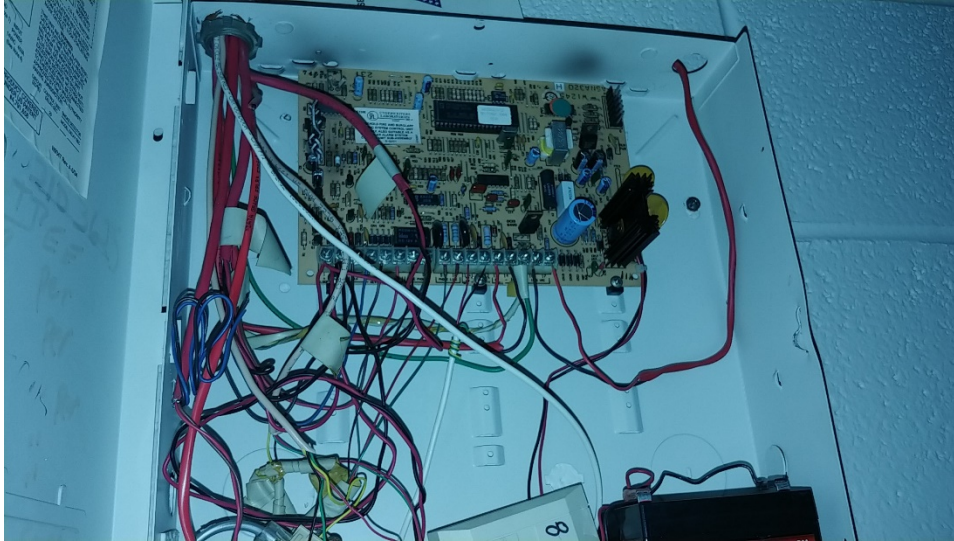


1300 Moon Lake Blvd. (Filter Building) Hoffman Estates, IL. 60169

Provide 24-hour monitoring of the panic signals and full parts and labor repair service.

Assess current Alarm panel utilizing Analog phone lines and replace with utilizing our Comcast Fiber internet connection with Cellular backup or use Cellular as primary. We want to eliminate the analog phone lines for our alarms.

Current Alarm Panel: **SD320**



Current Alarm Keypad:



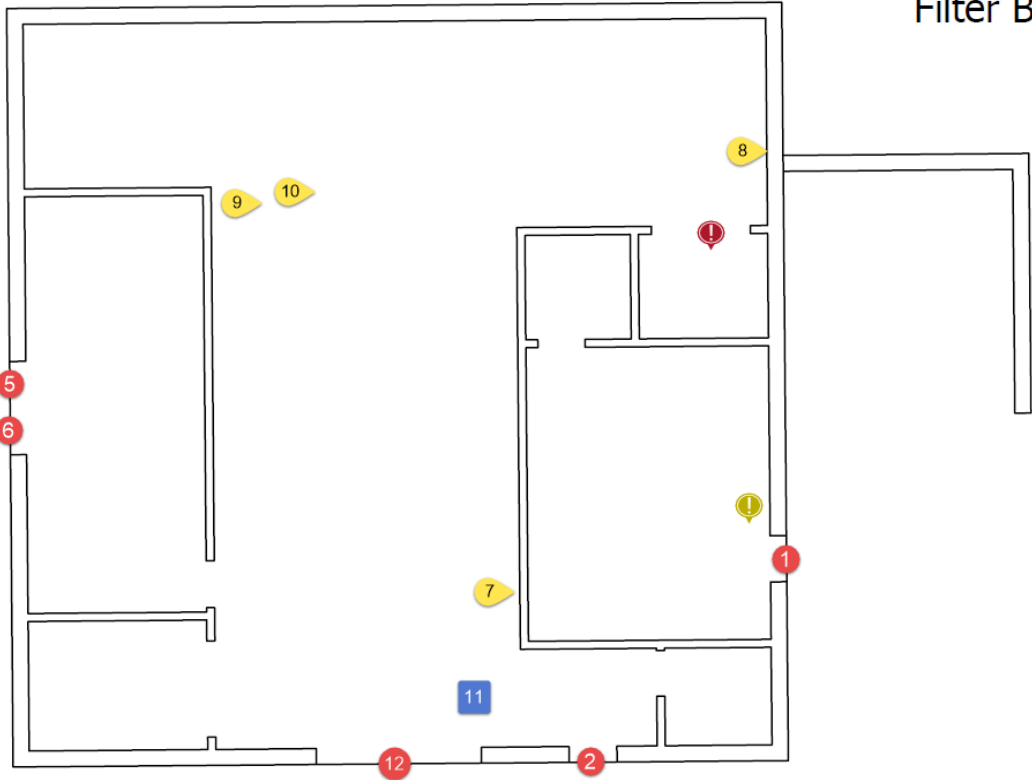
Alarm Zones:

Seascope (Filter Building) Alarm Zones

Zone #	Description
1	GUARD ENTRY
2	EQUIPMENT ENTRY
3	
4	
5	SOUTHWEST DR
6	NORTHWEST DR
7	LOW TEMP
8	HI WATER
9	PUMP 1
10	PUMP 2
11	EQUIPMENT MOTION
12	EQUIPMENT OVERHEAD

Seascope Family
Aquatic Center
Filter Building

- AA = Door Sensor
- AA = Motion Detector
- ★ = Panic Button
- ! = Alarm Panel
- ! = Alarm Keypad
- AA = Water Sensor

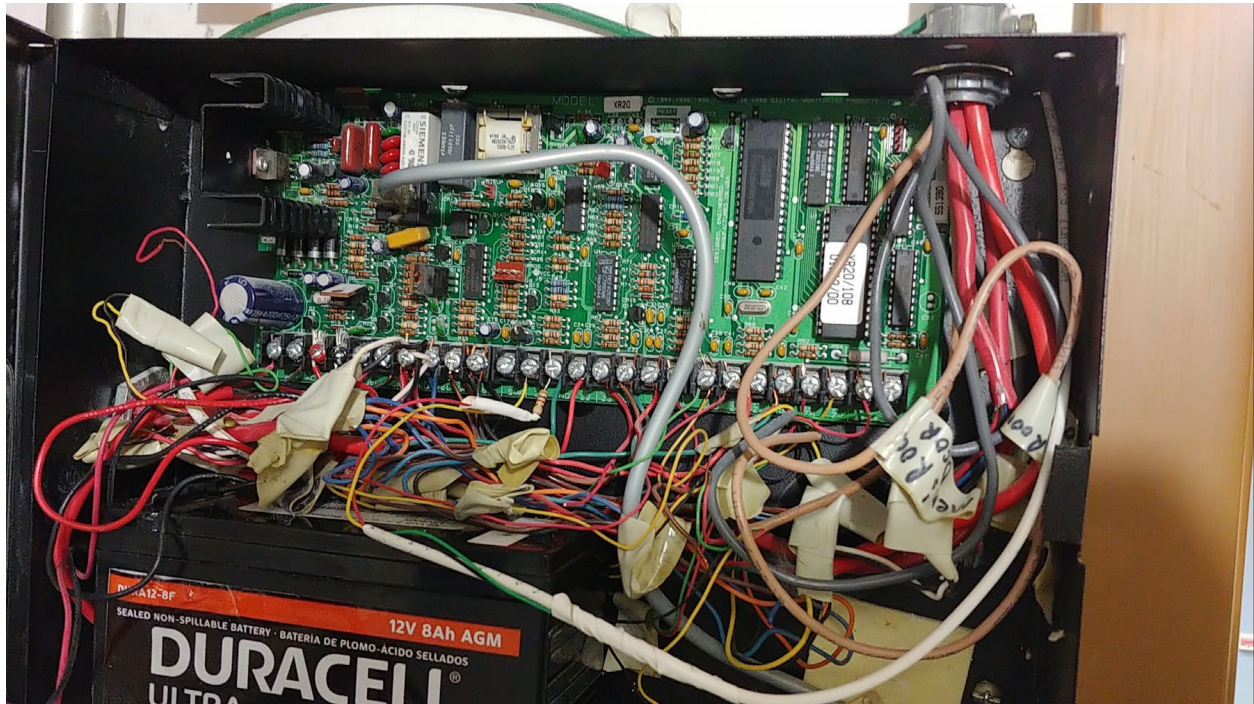


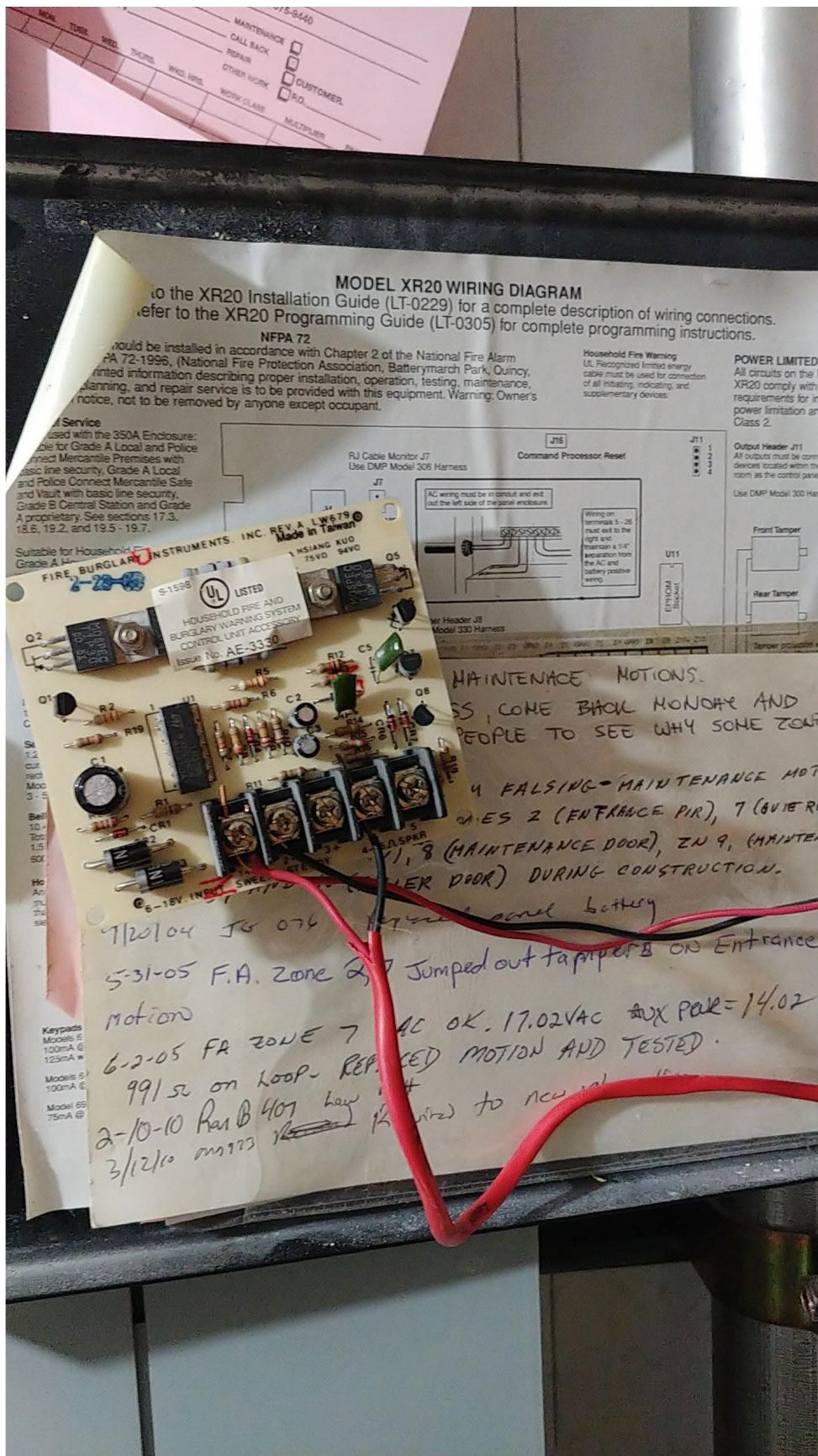
650 W. Higgins Rd. (Barn) Hoffman Estates, IL. 60169

Provide 24-hour monitoring of the panic signals and full parts and labor repair service.

Assess current Alarm panel utilizing Analog phone lines and replace with utilizing our Comcast Fiber internet connection with Cellular backup or use Cellular as primary. We want to eliminate the analog phone lines for our alarms.

Current Alarm Panel: **DMP XR-20**



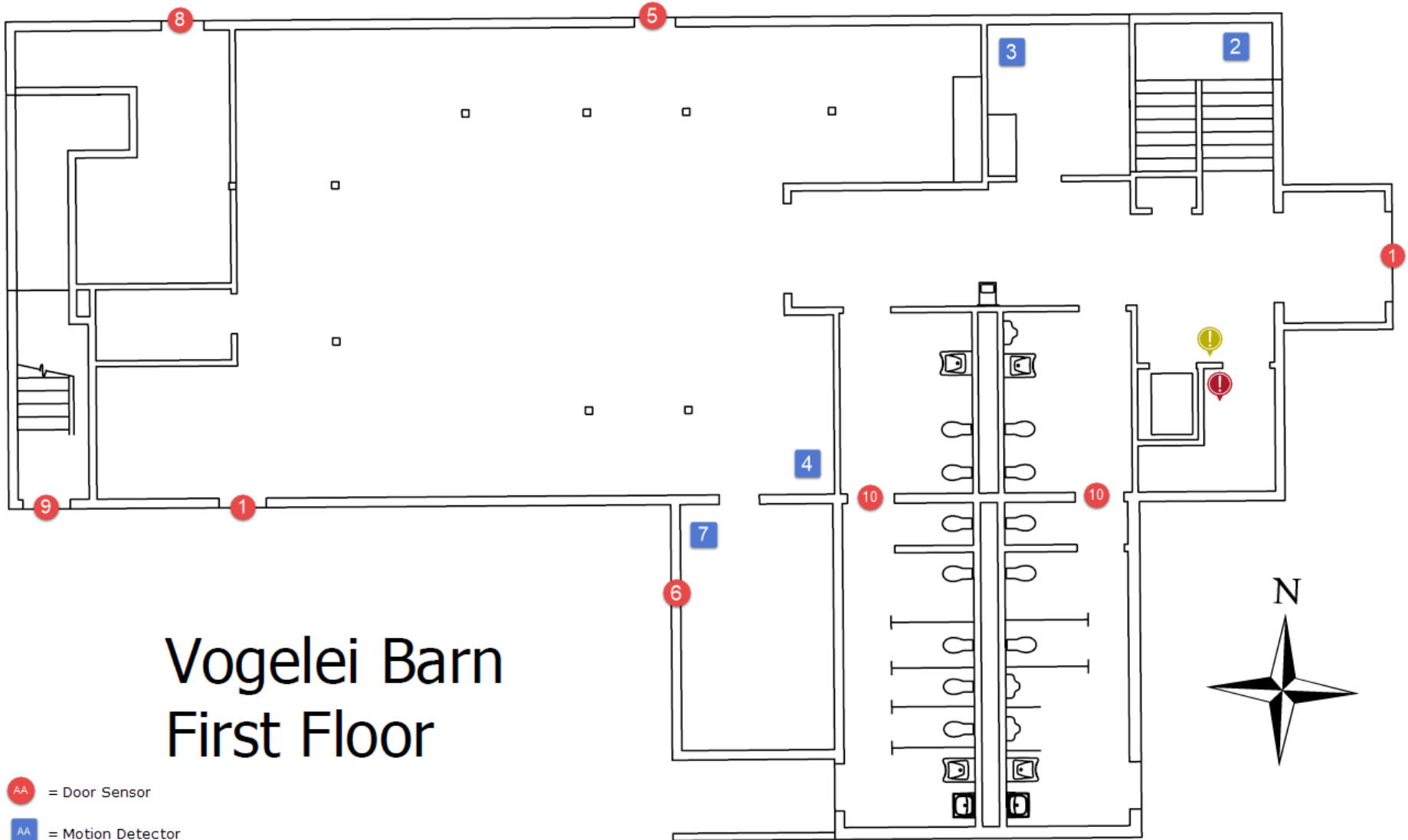


Current Alarm Keypad:



Alarm Zones:

Vogelei (Barn) Alarm Zones	
Zone #	Description
1	S. ENTRY*EXIT DR
2	ENTRY PIR
3	OFFICE PIR
4	TEEN CENTER PIR
5	N.EXIT DOOR
6	QUIET RM DOOR
7	QUIET RM PIR
8	MAINT DOOR
9	S.STAIRWELL DR
10	RESTROOM DOORS



Voagelei Barn First Floor

- AA = Door Sensor
- AA = Motion Detector
- ★ = Panic Button
- ! = Alarm Panel
- ! = Alarm Keypad

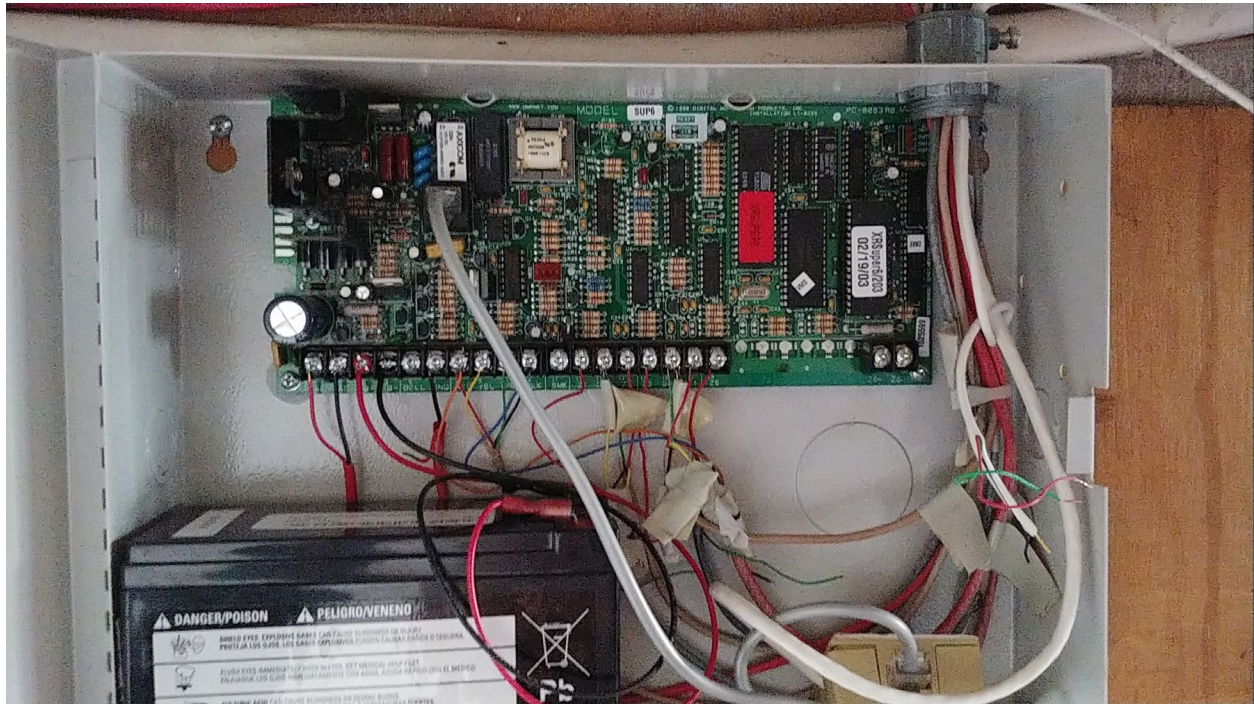


650 W. Higgins Rd. (House) Hoffman Estates, IL. 60169

Provide 24-hour monitoring of the panic signals and full parts and labor repair service.

Assess current Alarm panel utilizing Analog phone lines and replace with utilizing our Comcast Fiber internet connection with Cellular backup or use Cellular as primary. We want to eliminate the analog phone lines for our alarms.

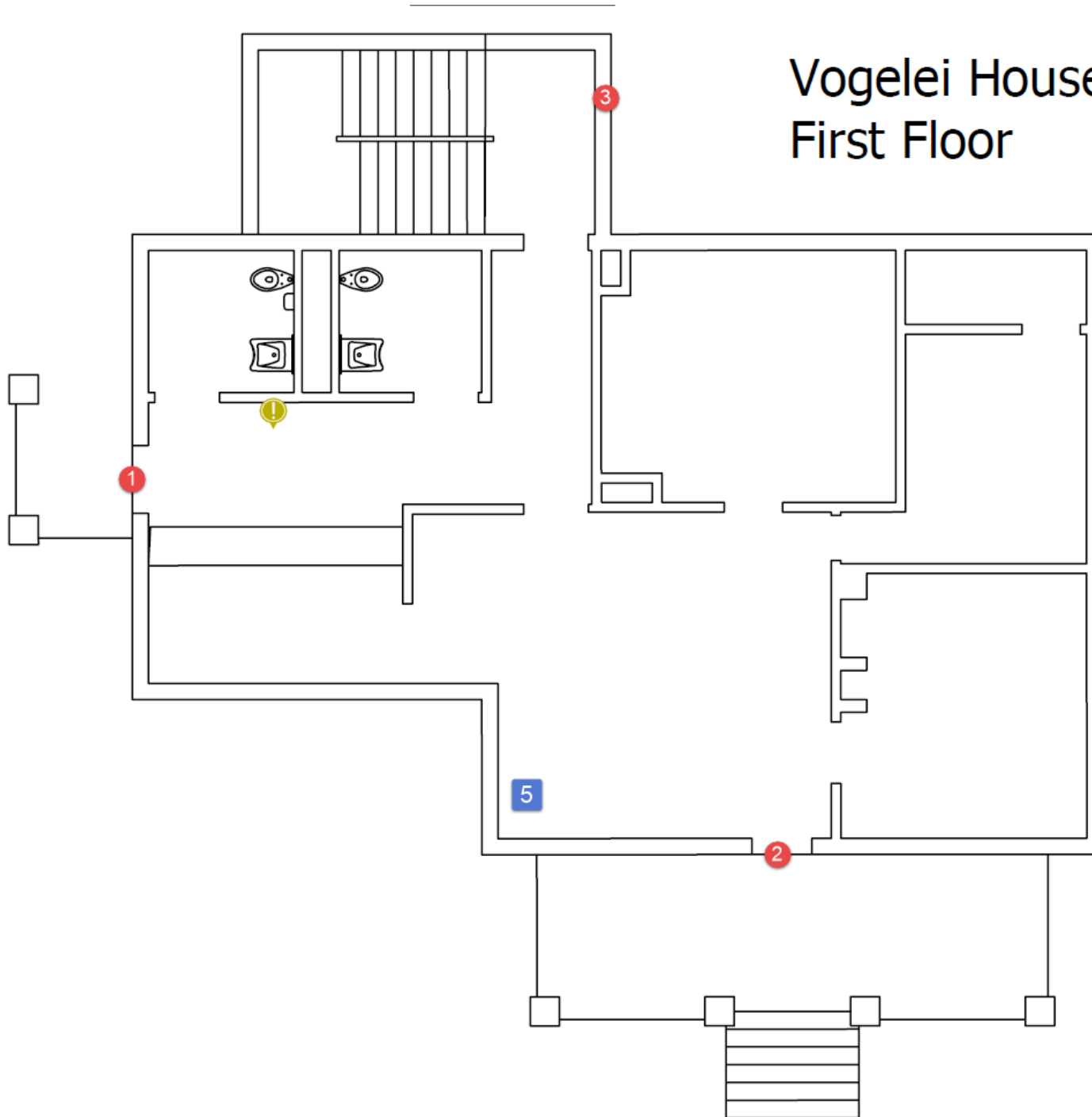
Current Alarm Panel: **DMP XRSuper6**








Alarm Zones:

Vogelei (House) Alarm Zones	
Zone #	Description
1	West Door
2	Front Door
3	Back Door
4	Basement Door
5	Main FL Motion

Vogelei House First Floor



-  = Door Sensor
-  = Motion Detector
-  = Panic Button
-  = Alarm Panel
-  = Alarm Keypad



Vogelei House Basement Floor

