

ENTIRE PARK PATHWAY RENOVATION & UPGRADE PLAN

SCALE 1" = 60 FT

REFERENCE NOTES SCHEDULE

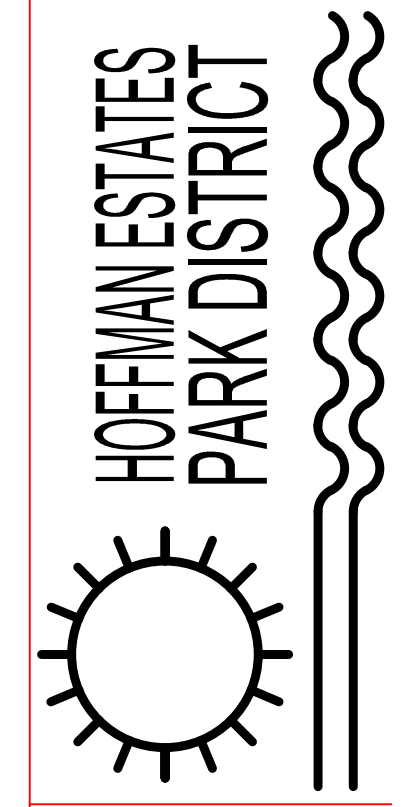
SYMBOL	DESCRIPTION	QTY	DETAIL
CS-03	3" THICK CONCRETE FLATWORK	8,369 sf	
CS-04	6" WIDE X 12" DEEP CONCRETE BARRIER CURB	26 lf	
CS-13	8-4-12 CONCRETE CURB	300 lf	
CS-14	REMOVE EXISTING CONCRETE & REPLACE W/ NEW 5" THICK CONCRETE	646 sf	
SI-11	3/4" EXTERIOR IMPROVEMENTS		
SI-11	6" DIA. ROUND DOUBLE WALL PLASTIC DRAIN PIPE	603 lf	
SI-12	ASPHALT PAVING		
SI-12	2FT x 2FT CONCRETE INLET STRUCTURE W/ OPEN GRATE	5	
SI-13	CONCRETE PAVING		
SI-13	WOODEN SPLIT RAIL FENCE 3 RAILS	363 lf	
SI-13	CONCRETE		
SI-14	ADJUST FOR MIN. X SLOPE	12,092 sf	
SI-16	ADJUST FOR RUNNING SLOPE	4,847 sf	
SI-17	NEW ASPHALT AREA	2,659 sf	
SI-18	ADJUST FOR EXTREME X SLOPE	16,973 sf	
SI-19	RE-CONSTRUCTED PATHS VERT. GRID CHANGES	5,869 sf	
SI-110	GRID 2" MINIMUM	14,096 sf	
SI-111	REMOVE EXISTING ASPHALT AND BASE	1,664 sf	
SI-112	NEW OVERLAY 2"	87,253 sf	

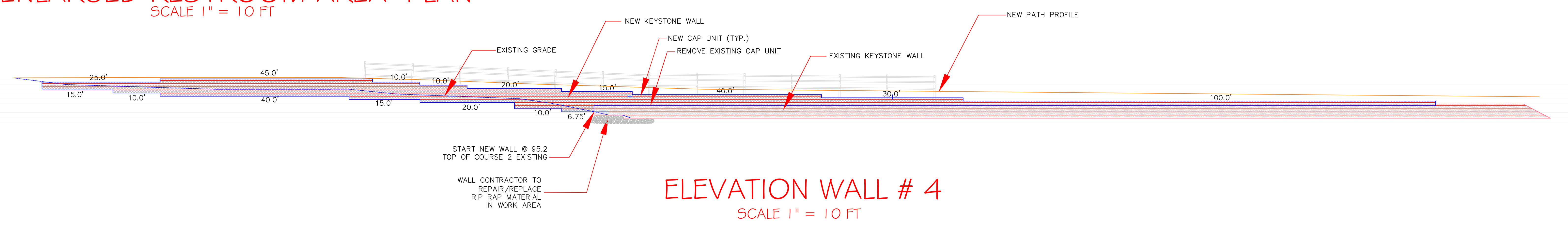
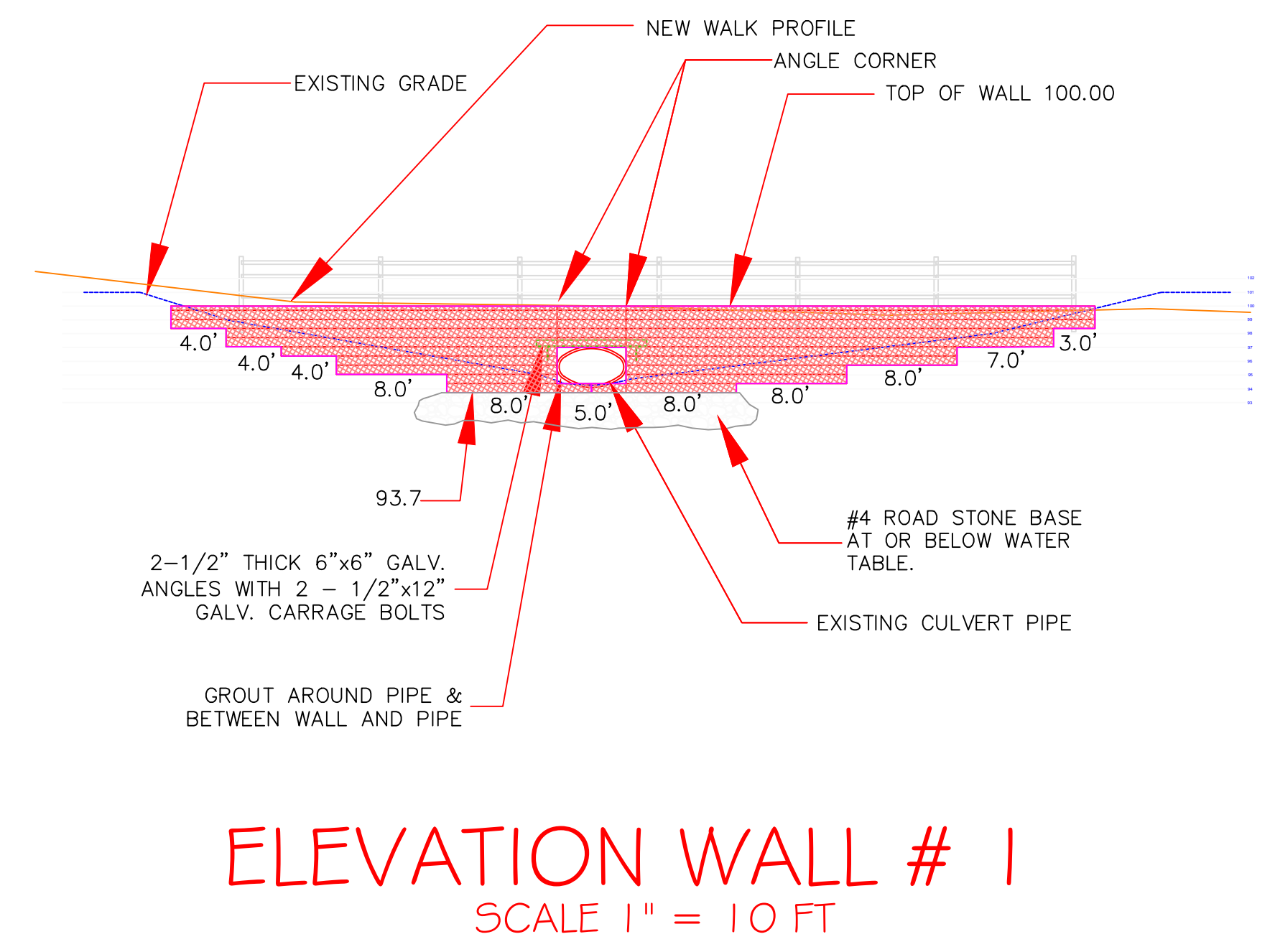
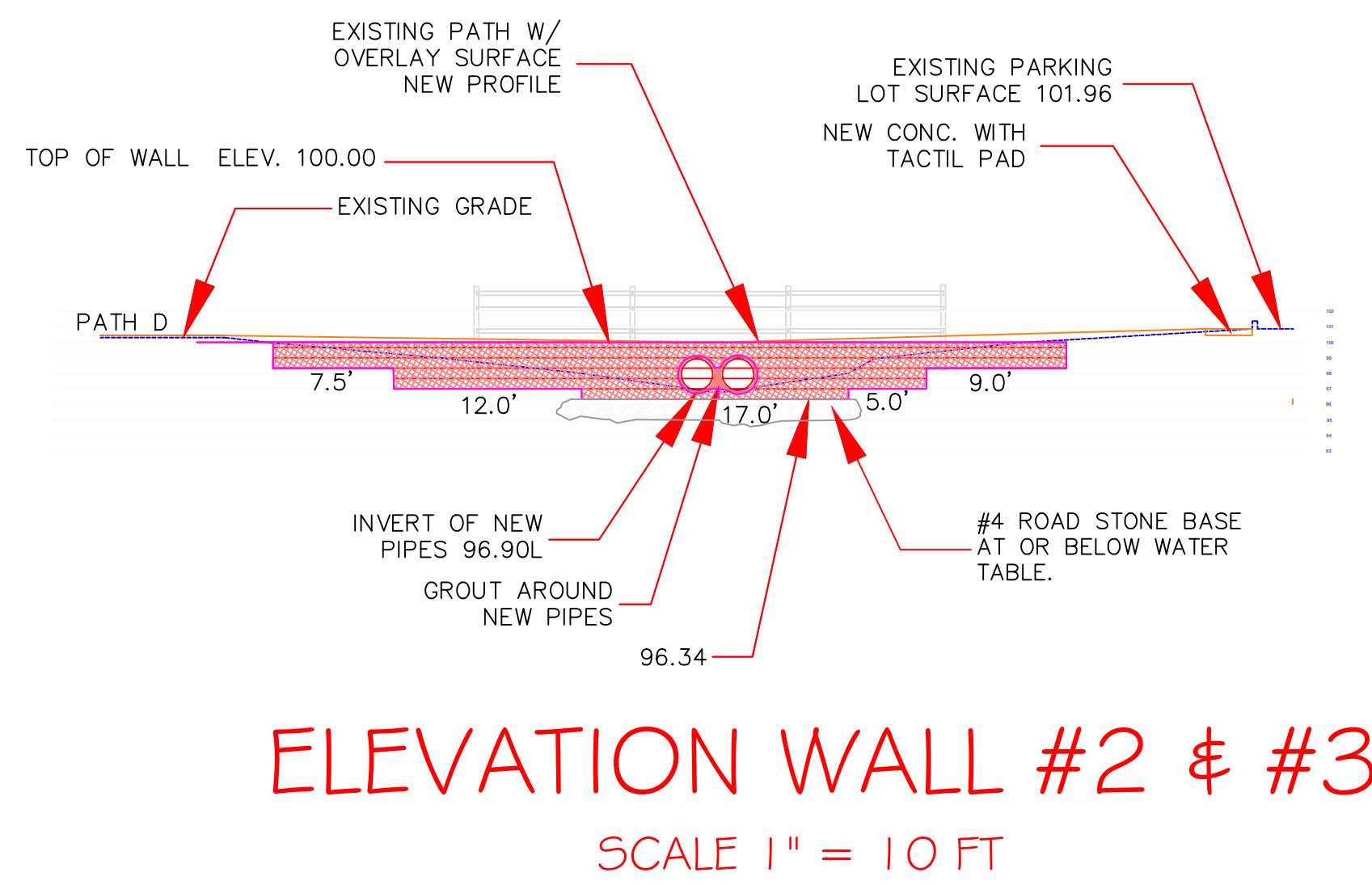
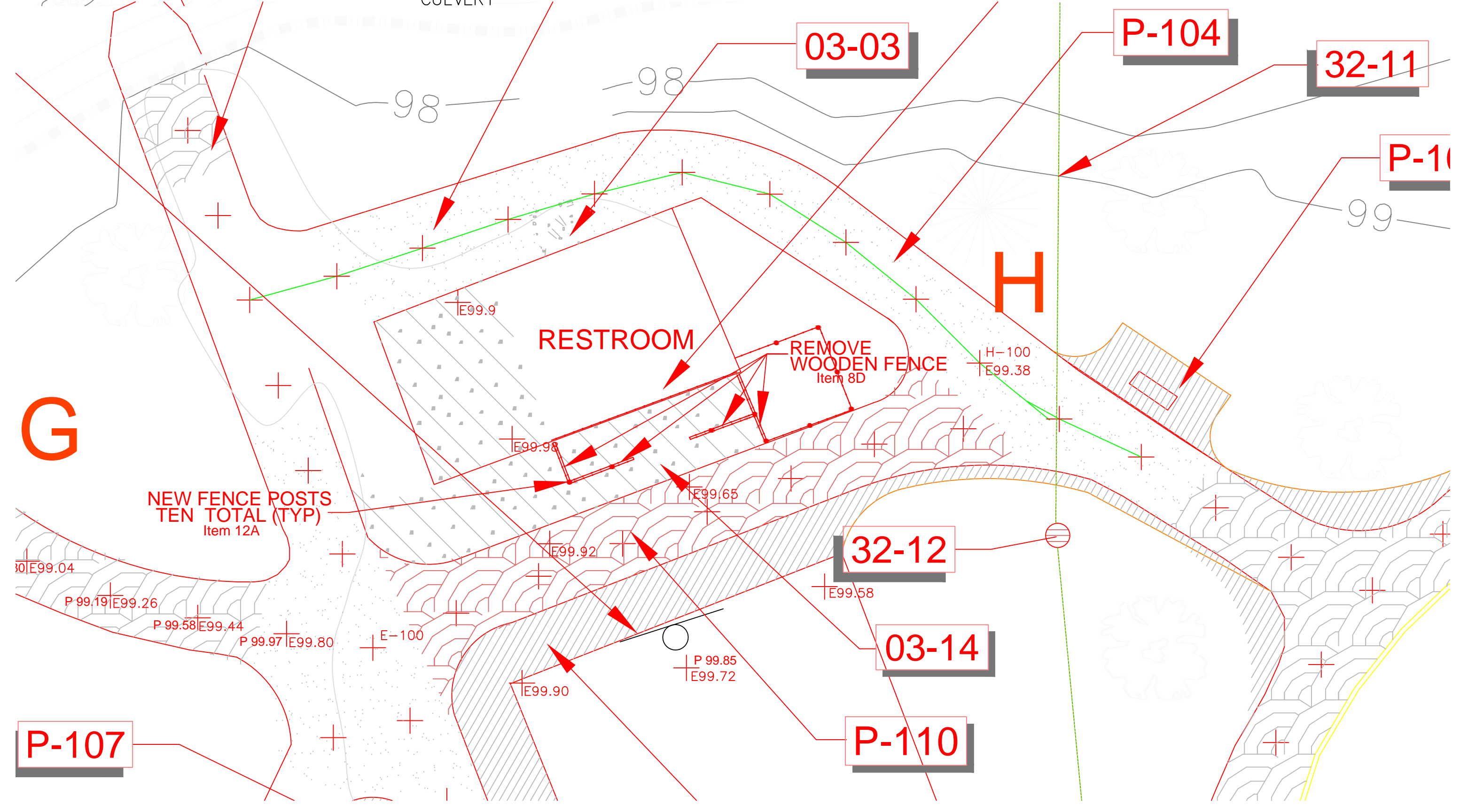
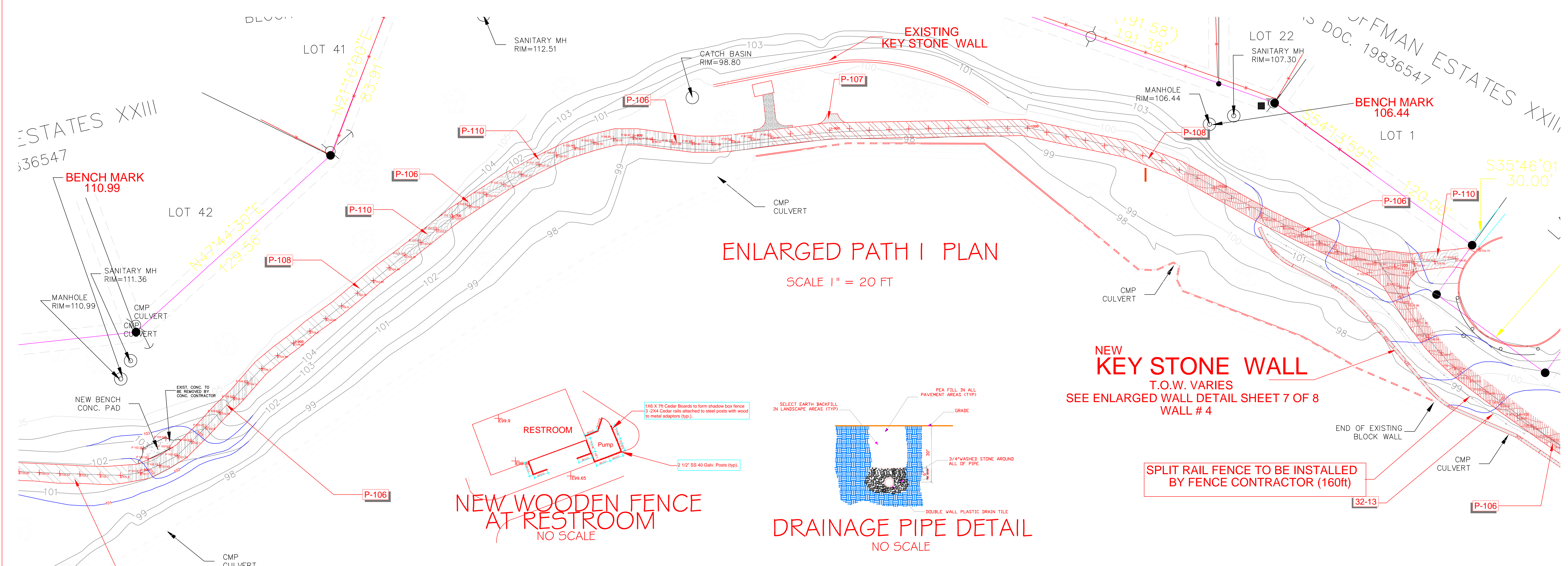
No.	Description	Date
1	ISSUED FOR REVIEW	12/09/2014
2	ISSUED FOR BID	01/06/2015

**PATH IMPROVEMENTS
2015**

HIGH POINT PARK
1704 GLENLAKE ROAD
HOFFMAN ESTATES ILLINOIS

1685 W. HIGGINS ROAD
HOFFMAN ESTATES, ILLINOIS 60186
PHONE: (817)-885-7500
FAX: (817)-885-7523

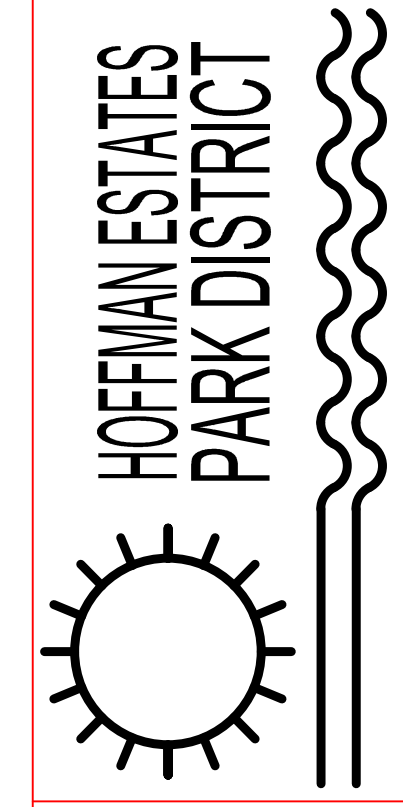


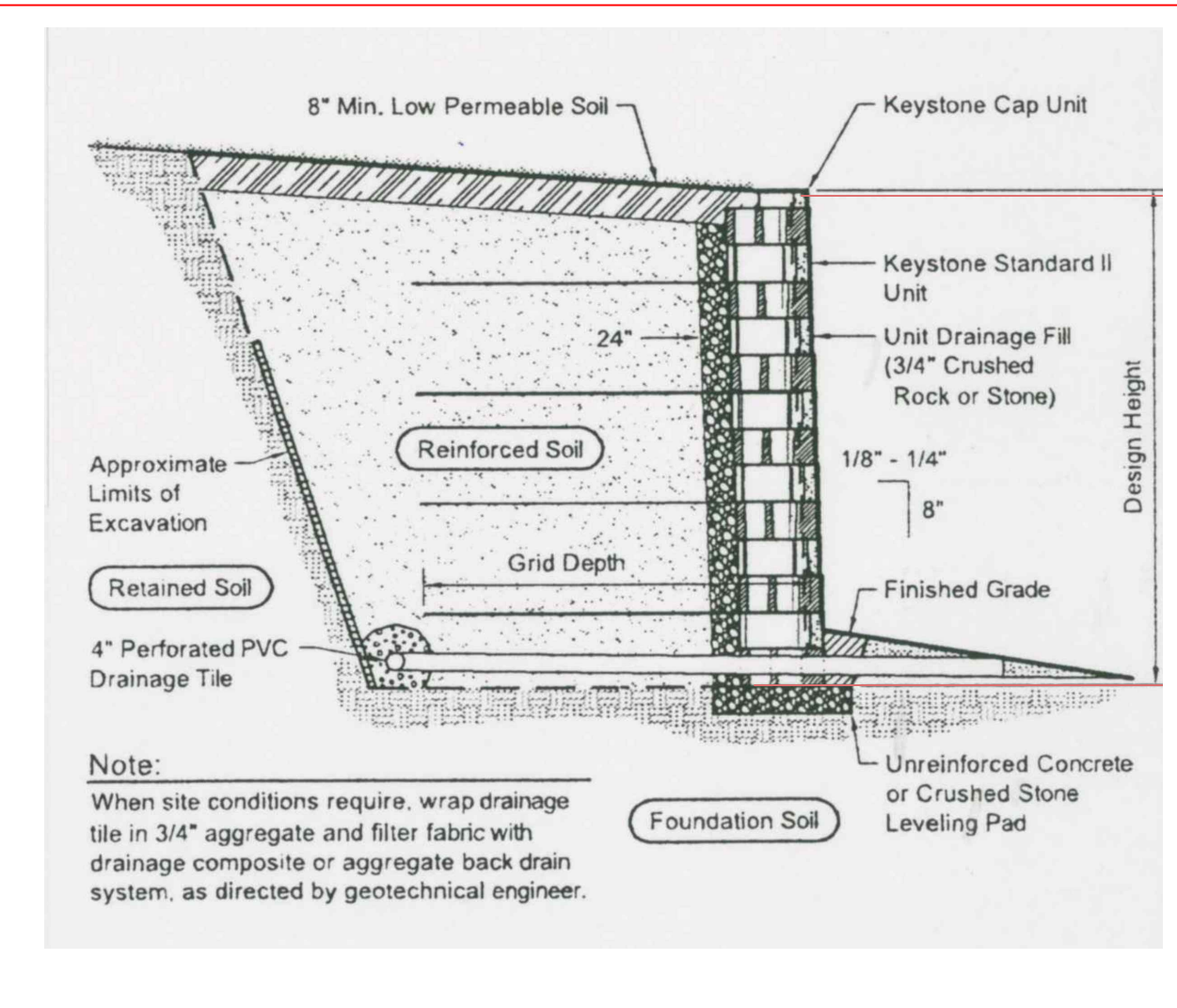
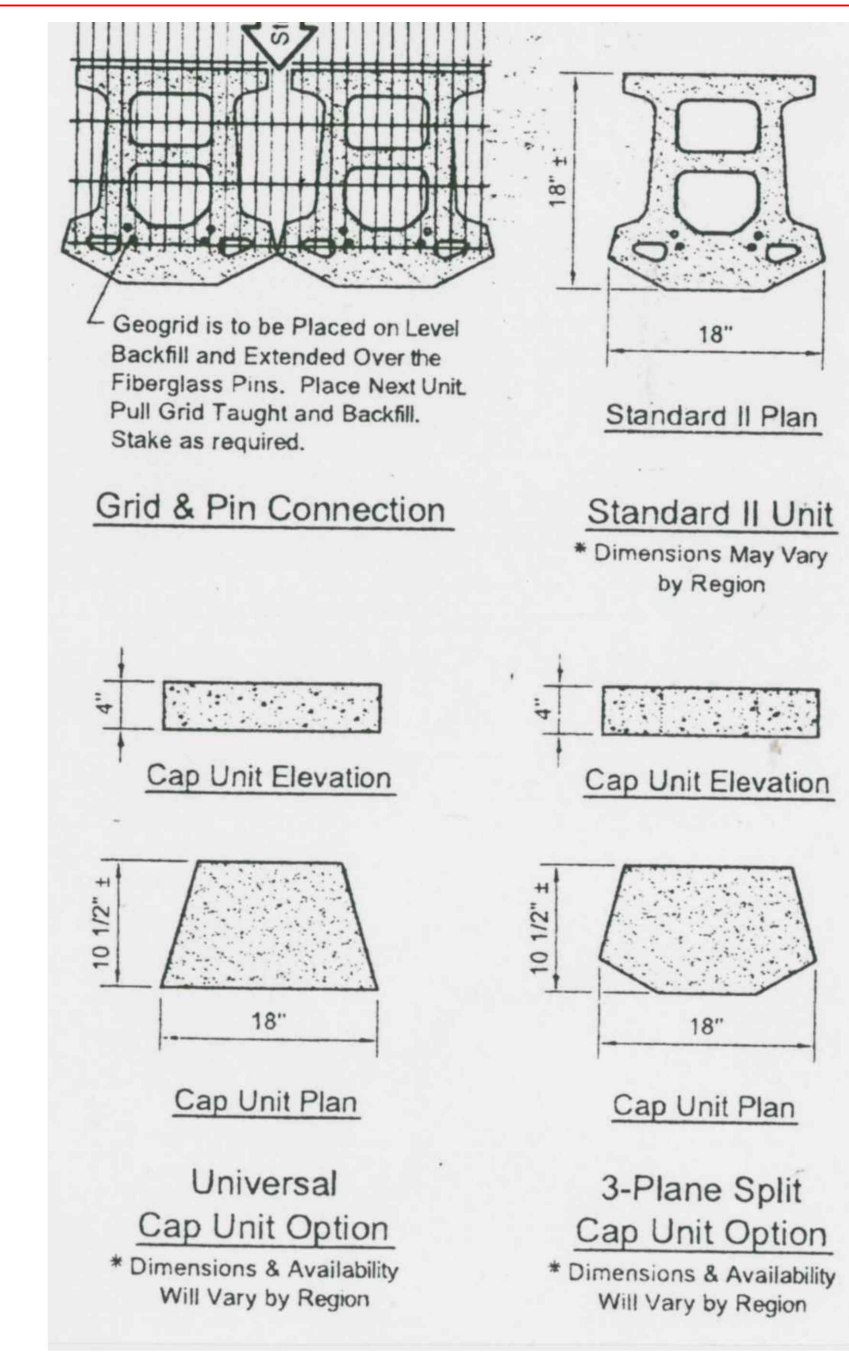
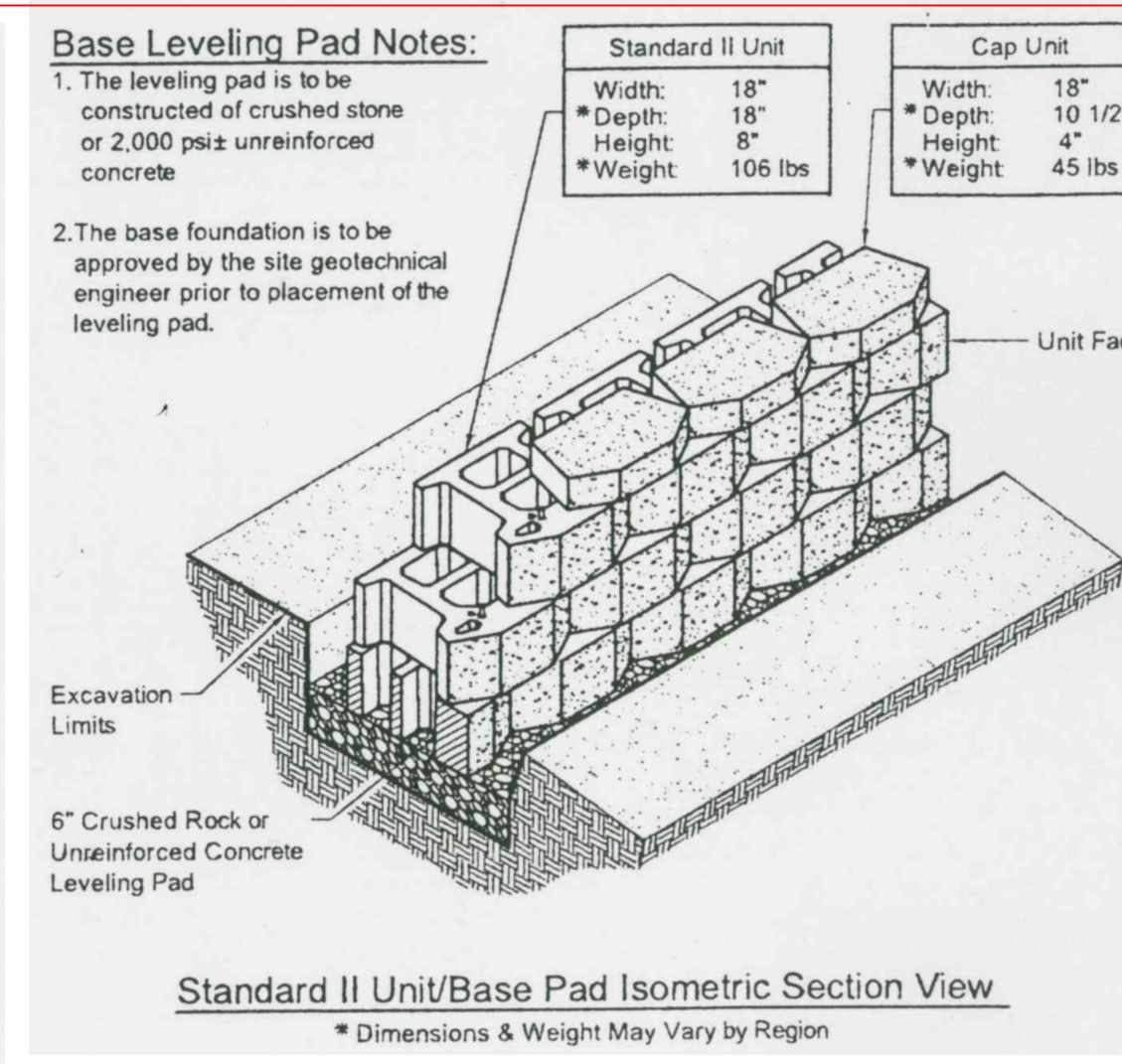
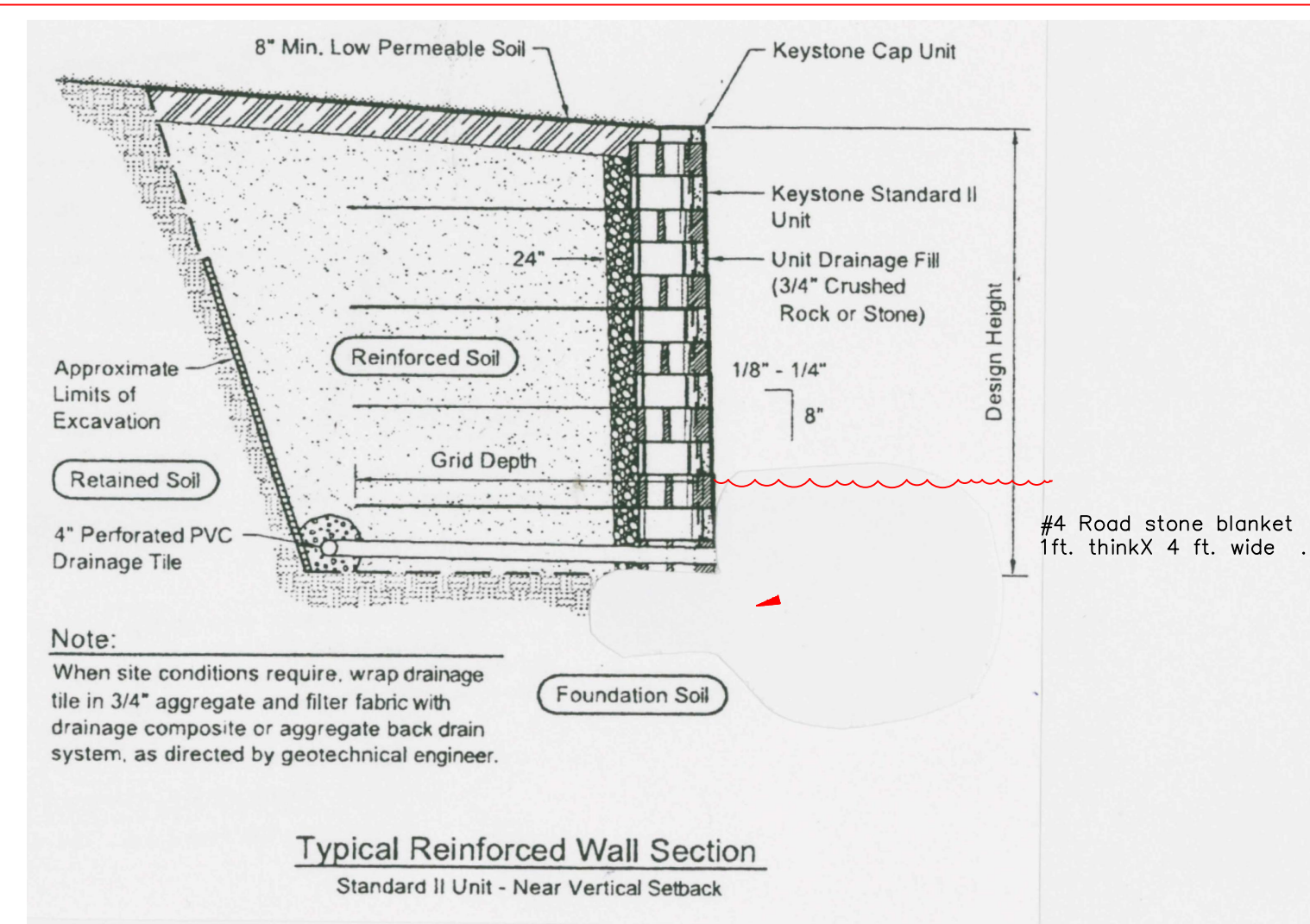


No.	Description	Date
1	ISSUED FOR REVIEW	12/09/2014
2	ISSUED FOR BID	06/08/2015

PATH IMPROVEMENTS 2015
HIGH POINT PARK
1704 GLENLAKE ROAD
HOFFMAN ESTATES ILLINOIS

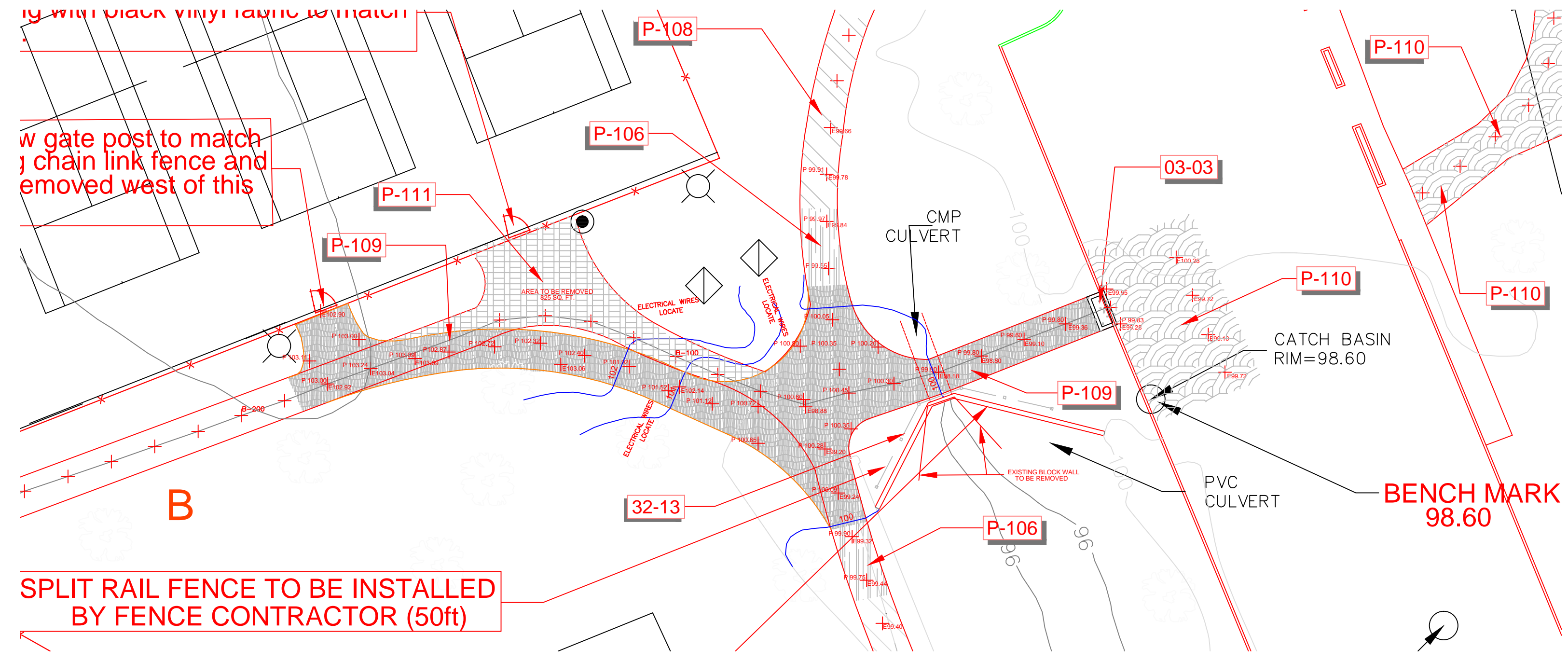
1665 W. HIGGINS ROAD
HOFFMAN ESTATES, ILLINOIS 60186
PHONE: (847) 885-7500
FAX: (847) 885-7533



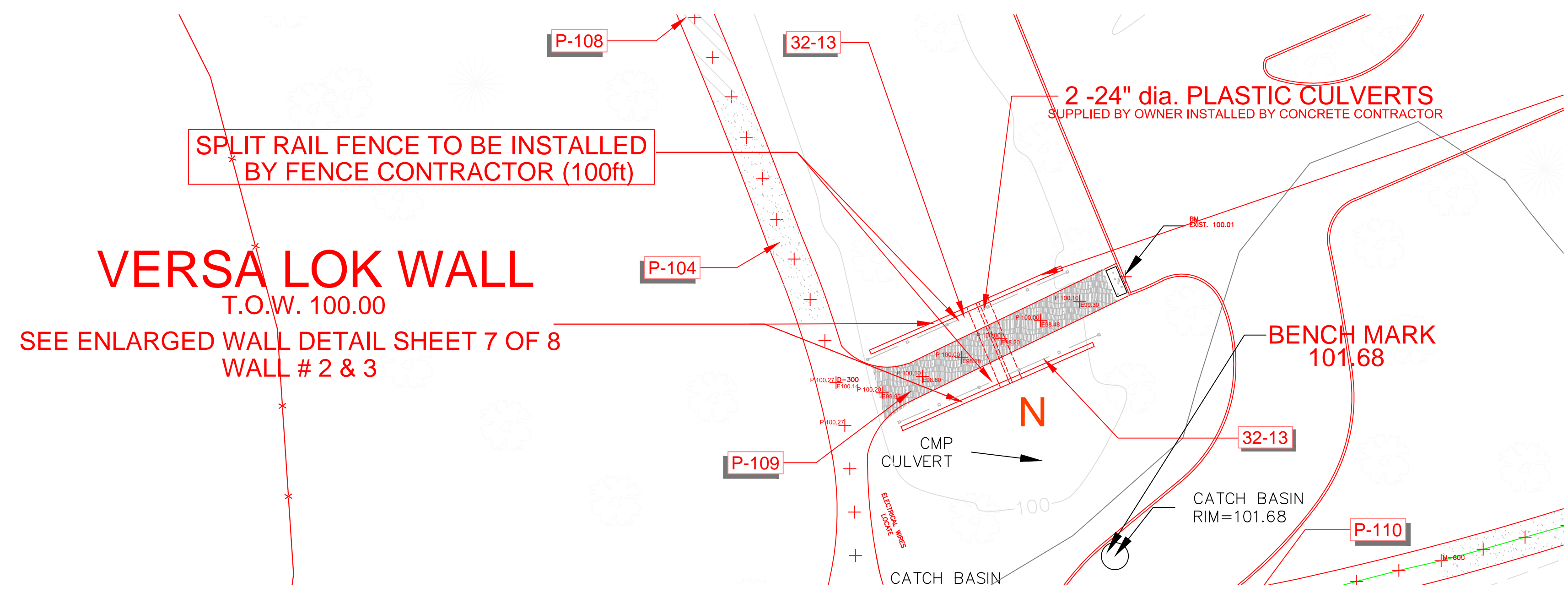


DRY BLOCK WALL DETAILS

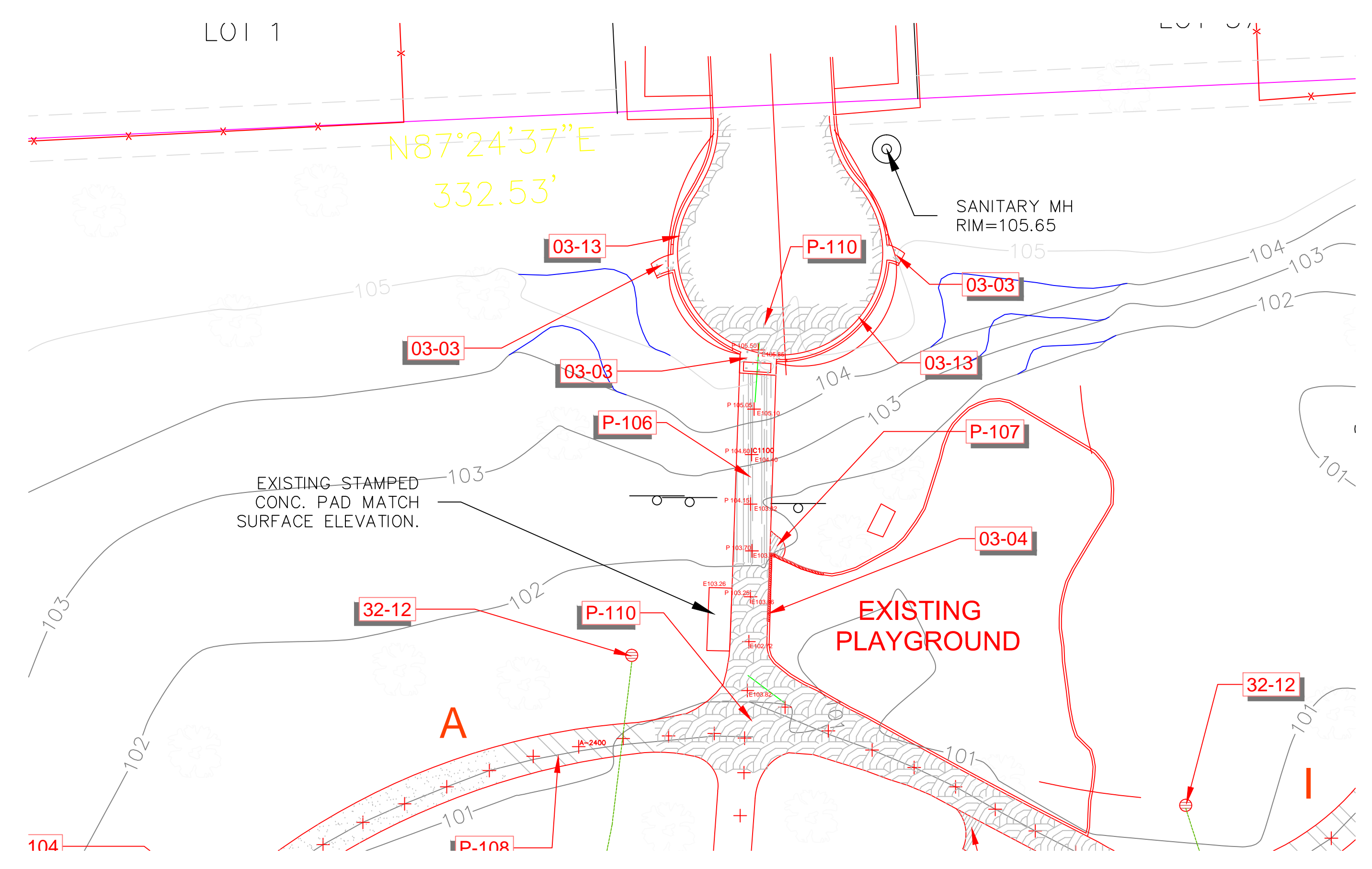
DRY BLOCK UNIT WALL DETAILS



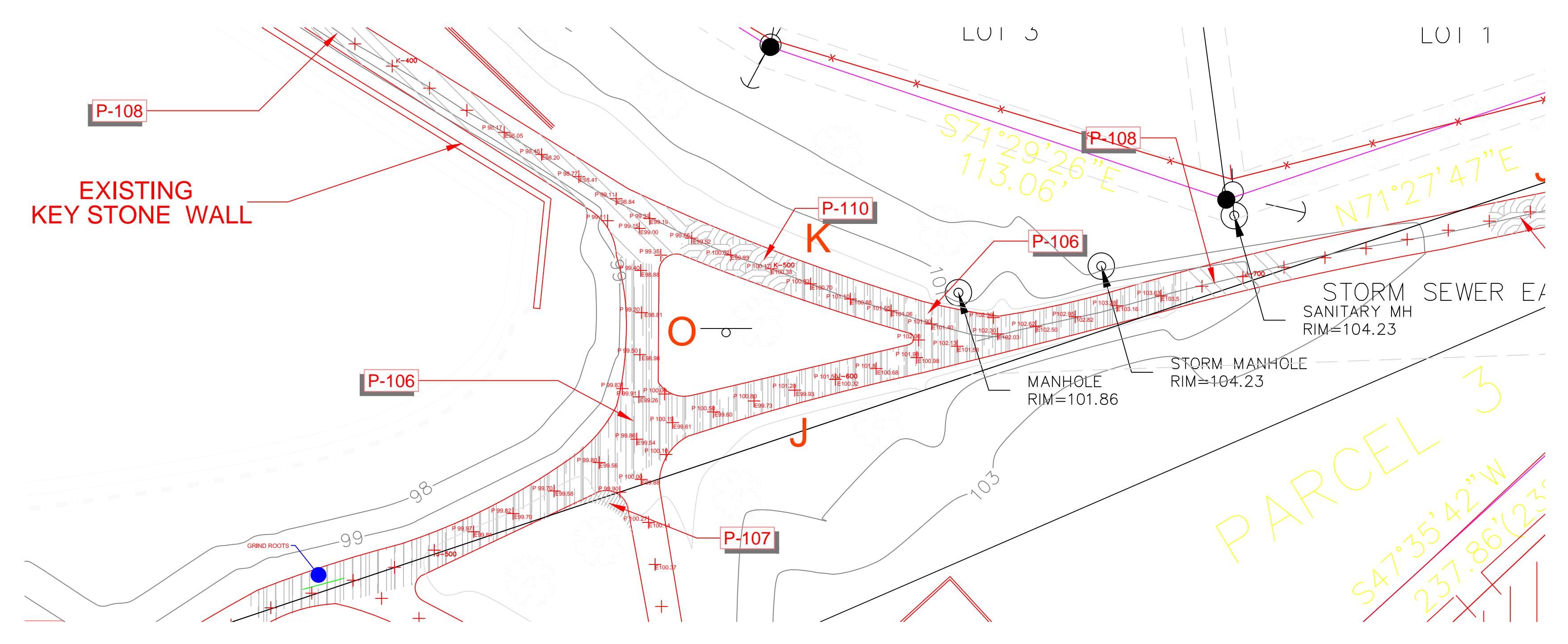
ENLARGED PATH B PLAN
SCALE 1" = 20 FT



ENLARGED PATH N PLAN
SCALE 1" = 20 FT



ENLARGED PATH C PLAN
SCALE 1" = 20 FT



ENLARGED PATH J&O&K PLAN
SCALE 1" = 20 FT

No.	Description	Date
1	ISSUED FOR REVIEW	12/09/2014
2	ISSUED FOR BID	01/09/2015

PATH IMPROVEMENTS 2015
HIGH POINT PARK
CLARK COUNTY, ILLINOIS
HOFFMAN ESTATES, ILLINOIS

1685 W. HIGGINS ROAD
HOFFMAN ESTATES, ILLINOIS 60185
PHONE: (847) 865-7500
FAX: (847) 865-7525

