



The mission of the Hoffman Estates Park District is to offer healthy and enjoyable experiences to our residents and guests by providing first class parks, facilities, programs and services in an environmentally and fiscally responsible manner.

AGENDA
REGULAR BOARD MEETING NO. 999
TUESDAY, NOVEMBER 24, 2015

1. ROLL CALL
2. PLEDGE OF ALLEGIANCE
3. APPROVAL OF AGENDA
4. AWARDS/RECOGNITION
 - Best of Hoffman
5. APPROVAL OF MINUTES
 - Regular Board Minutes 10/27/15
6. COMMENTS FROM THE AUDIENCE
7. CONSENT AGENDA
 - A. Victoria Park wetland area / M15-149
 - B. Playground renovations 2016 / M15-144
 - C. Ice arena cooling tower and refrigeration condenser / M15-145
 - D. Beverage Contract M15-158
 - E. Surplus Ordinance O15-020 / M15-159
 - F. Balanced scorecards 3Q / M15-151
 - G. Budget Format / M15-148
 - H. A&F Detail Reports
 - Manual checks \$325,556.33
 - Monthly Invoices \$356,077.36
 - I. Financial Statements
 - J. Acceptance of B&G Minutes 10/6/2015
 - K. Acceptance of Rec Minutes 10/13/2015
 - L. Acceptance of A&F Minutes 10/20/2015
8. ADOPTION OF EXECUTIVE DIRECTOR'S REPORT
9. PRESIDENT'S REPORT

REGULAR BOARD MEETING NO. 999

November 24, 2015

Page 2

10. OLD BUSINESS
11. NEW BUSINESS
 - A. Renaming of Victoria Park / M15-162
 - B. 2016 Calendar of Board & Committee Meetings / M15-165
12. COMMISSIONER COMMENTS
13. EXECUTIVE SESSION
 - A. Minutes, pursuant to Section 2(c)(21) of the Open Meetings Act
 - 10/27/2015
 - B. Appointment, employment, compensation, discipline, performance or dismissal of an employee, pursuant to Section 2(C)(1) of the Open Meetings Act.
 - C. The purchase or lease/sale of property owned by the public body pursuant to Section 2(C)(6) of the Open Meetings Act.
 - D. Pending or probable litigation, pursuant to Section 2(C)(11) of the Open Meetings Act.
14. DISCUSSION AND VOTE ON MATTERS DISCUSSED IN EXECUTIVE SESSION
15. ADJOURNMENT

ALL MEETINGS ARE HELD IN THE BOARDROOM OF THE HOFFMAN ESTATES PARK DISTRICT TRIPHAHN CENTER, 1685 W. HIGGINS ROAD, HOFFMAN ESTATES UNLESS OTHERWISE SPECIFIED. WE INVITE THOSE WHO MAY NEED AN ACCOMMODATION DUE TO A DISABILITY TO CONTACT US 48 HOURS IN ADVANCE. PLEASE CONTACT JANE KACZMAREK, EXECUTIVE ASSISTANT, AT 847-885-7500.



The mission of the Hoffman Estates Park District is to offer healthy and enjoyable experiences to our residents and guests by providing first class parks, facilities, programs and services in an environmentally and fiscally responsible manner.

MINUTES
REGULAR BOARD MEETING NO. 998
October 27, 2015

1. Roll Call:

A regular meeting of the Hoffman Estates Park District Board of Commissioners was held on October 27, 2015 at 7:00 p.m. at the Triphahn Center in Hoffman Estates, IL.

Present: Commissioner R. Evans, Kaplan, Kilbridge, Kinnane, McGinn, Mohan, Bickham

Absent: None

Also Present: Executive Director Bostrom, Deputy Director/A&F Director Talsma, Rec/Facilities Director Kies, P&D Director Buczkowski, Parks and Risk Director Giacalone

Audience: Facilities Manager Albig, TC Supervisor Fong, Judy Kudron and Family, Adam Mogilinski, Steve Deninzer, John Conroy, Mike Moran and Dan Pawinski, Greg and Chris Donahue, Greg Grant, Sandy Lovell of 860 N. Dexter

2. Pledge of Allegiance:

Everyone present stood for the Pledge of Allegiance.

3. Approval of Agenda:

Commissioner Mohan made a motion, seconded by Commissioner Kinnane to approve the agenda as presented. The motion carried by voice vote.

4. Awards & Recognitions:

President awarded Judy Kudron for the PT employee of the 3 Quarter for stepping up when the C&M Department lost a FT member and Adam Mogilinski for the hard work he put in renovating the Admin Offices.

As the Fire Department Team was not present for the BOH, Commissioner Kaplan made a motion, seconded by Commissioner Mohan to change the agenda moving the BOH to later in the meeting. The motion carried by voice vote.

5. Minutes:

Commissioner McGinn made a motion, seconded by Commissioner Kaplan to approve the minutes of the September 1, 2015; September 8, 2015; and September 22, 2015 meetings as presented. The motion carried by voice vote.

6. Comments From the Audience:

Mr. K. Evans thanked the district and BPC for participating in the Chamber Food Festival and complimented BPC staff on working the crowd as well as they did.

7. Consent Agenda:

Commissioner R. Evans made a motion to remove item Controlled Burns 2016 Contract /M15-141 from the consent agenda to item C. under New Business; seconded by Commissioner Kilbridge. The motion carried by voice vote.

Commissioner Mohan made a motion, seconded by Commissioner Kinnane to approve the consent agenda as amended.

On A Roll Call Vote: 7-0-0

Ayes: 7 Evans, Kaplan, Kilbridge, Kinnane, McGinn, Mohan,
Bickham

Nays: 0

Absent: 0

- A. Eagle Scout Project /M15-133
- B. Skate Park /M15-132
- C. Working Cash Abatement Resolution R15-003/M15-140
- D. Iatarola Property Annexation Ordinance O15-016/M15-139
- E. Program Manager job description updates / M15-137
- F. Surplus Ordinance Toro Sprayer O15-017/ M15-135
- G. A&F Detail Reports

- Manual checks \$331,399.80
- Monthly Invoices \$335,113.03
- H. Financial Statements
- I. Acceptance of B&G Minutes 9/1/2015
- J. Acceptance of Rec Minutes 9/8/2015
- K. Acceptance of A&F Minutes 9/22/2015

8. Adoption of Executive Director's Report:

Commissioner Kinnane made a motion, seconded by Commissioner Mohan to adopt the Executive Director's Report as presented. The motion carried by voice vote.

9. President's Report:

President Bickham noted that in a few more weeks he will have visited all the parks in the park district. He commended staff on the condition of the parks and noted that most often they were well populated. He also said the Pumpkin Fest went very well and he was excited to see models going up on the Bergman Property. He also thanked staff for sharing their information from the past conference.

10. Old Business:

None

11. New Business:

A. BINA Hearing/M15-146:

Deputy Director Talsma reviewed the item noting that it was required to hold the hearing and that it was a proposal to sell bonds not to exceed \$10,000,000.

Commissioner Mohan made a motion, seconded by Commissioner Evans to approve for public input on the District's future intention to issue bonds during the October 27 meeting. The motion carried by voice vote.

There was no additional public input on the item.

B. IAPD Credentials Certificate/M15-138:

Executive Director Bostrom reviewed the item.

Commissioner Mohan made a motion, seconded by Commissioner Kinnane to approve the Credentials Certificate with the appointments for the delegate and 1st, 2nd and 3rd alternates:

Delegate: Mike Bickham

1st alternate: Pat McGinn

2nd alternate: Robert Kaplan

3rd alternate: Ron Evans

The motion carried by voice vote.

C. Controlled Burns 2016 Contract/M15-141:

Executive Director Bostrom reviewed the item noting that it had been recommended by the A&F Committee and that in the past Victoria Park had been burned 3 times. In the first and third attempts, houses had been damaged because there was too much fuel too close to the homes and in the second burn, only 60% of the park was burned because it was too wet. He also explained that staff had talked with other burn companies and their recommendation was to cut a wide stretch around Victoria to protect the homes; however, they did not feel that at any point Victoria would be a high quality wet land.

He noted that staff was recommending that the water control structures be repaired by the Village to allow for the appropriate amount of water to flood the wet land which would, in turn, flood out the woody vegetation, Phragmites and cattails growing in the area reducing the amount of fuel in the park. He explained that park staff would monitor the water levels and in 2-3 years Victoria would be re-evaluated for a burn. He explained that staff was recommending other sites to be burned by Restoring Nature with Fire for \$13,494.

Commissioner McGinn asked how long it would take to bring the levels back to normal and Director Giacalone noted that it would be dependent on the rain levels. Commissioner Kinnane asked if the Village was repairing the water controls in-house and it was noted that they would. Commissioner Mohan asked if the district would incur a cost and Executive Director Bostrom said they would not.

Ms. Lovell addressed the board noting that the Village had been notified of an issue with the water control level in 2006. She also said she called Paul Leffler of the Army Corps of Engineers and he agreed that the higher water level should get rid of the cattails and other invasive plants and that a burn could be more successful after the removal of those plants. She noted that the district would have to go through Congress for funds but that then the ACOE could come out to help address issues with the wet lands. She also noted that Long Grass had done the best burn in the area and that it had been too wet when Restoring Nature had come to burn the area.

Commissioner Mohan made a motion, seconded by Commissioner Kilbridge to approve awarding the 2016 contracted burns to Restoring Nature with Fire from Ann Arbor, Michigan in the amount of \$13,494.00 to burn Hunters Ridge Park, Black Bear Park, and Rohrssen Park.

Additionally, the board approved that following the village repair of the out flow water level control structures, after a 3 to 5 year period of the water level being maintained at its engineered height, the park district would re-evaluate Victoria wetlands to see if the higher water level has reduced the amount of available fuel and if controlled burning could again become an option for Victoria Park. The motion carried by voice vote.

Best of Hoffman:

With the arrival of the Fire Department Team, Commissioner Mohan made a motion to return to the BOH at this point in the meeting. The motion carried by voice vote.

President Bickham presented John Conroy, Mike Moran and Dan Pawinski with BOH for their immediate response to the life threatening emergency on the ice on September 27th. He also awarded BOH to the Fire Department Team of Jacob Szafranski, Jeff Northrup, Kurt Lichtenberg, Steven Stein, Matthew Fijalkowski and Lt Anthony Butler for their response to the situation as well as awarding Greg Donahue a gift card from the park district.

12. Commissioner Comments:

Commissioner Kinnane praised the staff at PSSWC and noted that the Summit Café was a great addition.

Commissioner McGinn commended staff on the informative packets.

Commissioner Mohan reminded everyone of the Turkey Shoot November 7th.

Commissioner Kaplan commended the late night staff at Triphahn Center.

Commissioner Evans also reminded everyone of the Turkey Shoot and encouraged everyone to attend as many other district events as possible.

13. Executive Session:

Commissioner Mohan made a motion, seconded by Commissioner Kaplan to move to Executive Session at 7:42 pm for the purpose of:

- A. Minutes, pursuant to Section 2(c) (21) of the Open Meetings Act.
- B. Appointment, employment, compensation, discipline, performance or dismissal of an employee, pursuant to Section 2 (c) (1) of the Open Meetings Act.

On a Roll Call: Carried 7-0-0

Ayes: 7 Evans, Kaplan, Kilbridge, Kinnane, McGinn, Mohan,
Bickham

Nays: 0

Absent: 0

Commissioner Evans made a motion, seconded by Commissioner Kaplan to reconvene to regular session 8:35 at pm. The motion carried by voice vote.

14. Discussion and Vote from Executive Session:

None

15. Adjournment:

Commissioner Mohan made a motion, seconded by Commissioner Kinnane to adjourn the meeting at 8:36 p.m. The motion carried by voice vote.

Respectfully submitted,

Dean R. Bostrom
Secretary

Peg Kusmierski
Recording Secretary

**HOFFMAN ESTATES PARK DISTRICT
REGULAR BOARD MEETING NO. 999**

EXECUTIVE DIRECTOR'S REPORT

November 2015

PARKS DIVISION

1. The left field area of the large baseball field at Fabbrini Park has been leveled, re-graded, re-seeded and erosion matted to minimize the drainage problem. This problem has resulted from very unstable soil conditions that exist in the area.
2. The newly back-filled and planted pathway at Fabbrini Park has grown in sufficiently to handle a weed control spraying, which was accomplished in mid-October.
3. Perimeter and safety barrier mowing is nearing completion in preparation for controlled burns of natural areas that will begin (weather permitting) in November.
4. The east soccer field at Cannon West has been prepped and re-sodded. Repair was necessitated by excessive play on that portion of the soccer area.
5. All soccer fields and Sycamore football have been re-seeded and fertilized for the season.
6. The long winter and better than average growing season made the use of insecticides for sod web worms and grubs unnecessary this season. Expenditure for insecticides was zero.
7. Preparations are being made to shut down all irrigation systems; blowing the systems out and removing RPZ's and meters.
8. Landscaping was completed around the new Port-O-Let structure at Chestnut Park.
9. Fall tree planting was completed 50 trees were planted in parks throughout the district replacing Ash trees that were removed due to EAB. The total number of trees planted for 2015 was 135.
10. Ash tree removals for 2015 were completed with 149 trees removed in active park areas. 54 Ash trees remain in active park areas which will be removed and replaced in 2016. Leaving only the Ash trees in our natural areas, these trees will be evaluated and removed as needed in 2016.
11. All in house controlled burn permits have been received; weather and conditions permitting, we will begin burns the first week in November.
12. Truck 515 replaced right front wheel bearing
13. Mobile lift replaced control pad and safety switch
14. Truck 532 replaced radiator

15. Trucks 516 and 520 had air bag recall performed
16. Van 506 front brake rotors and rear brake drums cut replaced rear brake shoes
17. Brush mower 554 replaced gaskets on transmission and two hydraulic hoses
18. Modified Z turn mower into a ball field groomer
19. Skid loader 821 new tires installed
20. Annual fuel pump inspection completed
21. Truck 524 replaced hydraulic hose
22. Started maintenance and repair on snow plows and snow blowers
23. Staff repaired parking light polls at PSSWC.
24. Staff replaced blower motor in activity pool Dectron unit.
25. Staff repaired belts on a RTU unit at TC.
26. Staff repaired outside building lights around ice area entrance at TC.
27. Staff repaired shop's air compressor.
28. Staff repaired tennis lights at Fabbrini Park.
29. At Cannon Park West Soccer Fields Lights repaired.
30. Staff constructed block wall, ADA concrete pad for Pot-a-let enclosure at Chestnut Park.
31. Staff removed Playground canopy's for the winter season.
32. Staff removed fountains from lakes at South Ridge, Vogelei and Triphahn Center.
33. Staffs straighten and repaired vents/ louvers on units at PSSWC & Triphahn Center rooftops.
34. Staff installed new Handicap signs at Sycamore Parking lot.
35. Staff painted shelter, replace Basketball hoop and repaired all split rail fencing around path.
36. Staff repaired bridge, deck and slide at Sheffield Playground.
37. Staff repaired block wall and swing bolts at Canterbury Park.

PLANNING & DEVELOPMENT

1. Architectural Studies for the Triphahn Center:

A team of staff along with Williams' Architects met to discuss the planning course of action for the active adult and dry ice studies. The number one task requested of staff was to come up with final needs analysis that will be presented to the architects in early November. In addition, planning staff has prepared an as built plan of the existing center area which is to be used by the architects for preparation of the concept recommendations.

2. Marquee Signs:

Overall the Marquee signs have operated for the past year with only one known interruption which occurred after a storm event and involved the WRC sign. Recently, one problem that has occurred is that the black louvers that are made of plastic have begun to come off the modules on both faces of the BPC sign. As of

this writing, approximately ten louvers have been replaced. Within the last 10-14 days, additional louvers have begun to become dislodged which affect visibility of the LED lights at oblique angles. To correct this problem, Watchfire – the digital board manufacturer has agreed to replace all the louvers on both faces of this sign. Staff has checked all the other locations and has determined that the louvers are all intact at all other locations at this time. Watchfire has assured staff that if in the future similar failure occurs at these locations, Watchfire will stand by their product and replace any failed louvers. Both the operational and louver situations have been or will be repaired at no cost to the district.

3. Walkways:

Sidewalks adjacent to parking lots and facilities have recently been raised or adjusted to correct vertical difference caused by frost heaving or settlement. This work will help reduce trip hazards and address ADA deficiencies. Upon completion, staff was satisfied with the overall results that will reduce the amount of concrete that could be needed to be replaced in the future. Any slabs that were not able to be corrected will be replaced in 2016 as part of the capital replacement program. This process saves the district approximately 75% of the cost to make these corrections.

4. Playground Bid Packages:

The bid packages for this work are approx. 75% complete and final work on the documents will be done in November with a December bid release in mind. Final bids are due in January and will be presented at the February B&G Meeting.

Recreation and Facilities Division



UPCOMING EVENTS

- Nov 7 – Turkey Shoot at Bridges of Poplar Creek Country Club
- Nov 21 – Parents Night Out at PSSWC
- Nov 18-21 – Winter Guide Arrives in homes
- Nov 23 – Winter Registration Begins at 8 AM
- Dec 12 – Winter Fest (10AM-1PM) and Breakfast with Santa (9AM-Noon) at Bridges Of Poplar Creek
- Dec 13 – All Aboard! Storytime Train Ride
- Dec 19 – Parents Night Out at PSSWC
- Dec 20 – Skate with Santa 4:20-6:10 PM at Triphahn Ice Arena

Snapshot Summary/Highlights:

- As part of our NRPA Park Champions Initiative www.nrpa.org/Park-Champions (which is a year round ambassador program to engage our local elected

officials to support Parks & Recreation, specifically HEPD) for the end of this year and 2016. On 10/07 Representative Michelle Mussman was at the Triphahn Center & Ice Arena. She spent an hour with staff discussing various topics of interest, then meeting our early learning teachers and children, while finally finishing up with some of the members in our 50+ center. This program will be on-going (contacting our local representatives) and encouraging them to visit like this one and attend numerous special events.

- On 10/09 staff met with Lori Kay Paden from the University of Illinois to discuss a plan to have her present and help train our team here at the district on upselling and cross selling. This program will roll out in 2016.
- The HEPD Pumpkin Fest on 10/10 was a wonderful success; staff changed the direction this year and offered the residents and community the opportunity to decorate pumpkins (instead of scarecrows). The event also included a variety of other activities including a wonderful country band Wild Flower, inflatables, face painting, balloon making and various other activities from 12noon to 2pm. Staff believes the attendance was around 300+ for the event.
- The Climbing Wall Trick-or-Treat event at PSS&WC on Tuesday, October 27th had 35 registered for the event, with a maximum of 30. Staff was able to accommodate and accept the 5 on the wait list. It was a very well received event, being featured in the Daily Herald as well.
- Halloween Bash took place on Saturday, 10/31 with a record number of 182 registered, last year we had a total of 126 participants registered. Partakers received a pie pumpkin to decorate, played games, decorated cookies and had the opportunity to bounce in the Halloween moonwalk or have their finger casted by Amita Healthcare. Hoffman Stars Dance Company was on hand to work their bake sale again this year.
- Digital and Social Media engagement has been very positive going into the 4th quarter of 2015. Some exciting statistics include, Mobile Application Users up from 1,137 in 2014 total whereas at the end of the 3rd quarter in 2015, 1,354 (+16%). Online Brochure Hits end of 2014 total 5,314 and at the end of the 3rd quarter of 2015, 9,375 (+43%) and Facebook likes up from 1,405 at the end of 2014 to 1,975 at the end of the 3rd quarter of 2015, (+28.8%). Staff continues to learn and grow in the best ways to engage our users. Staff will report the final totals once the 4th quarter numbers are final.
- Number of volunteers is going well; currently there have been 316 participants through the end of the 3rd quarter whereas the total in 2014 was 315. Final numbers will be reported in the 4th quarter reports.
- The Early Learning and STAR programs continue to show good growth, the total Preschool participation is up 16 participants from this time last year total (291 in 2014) and (306 in 2015) + 15. The STAR program is up + 59 from 2014 to 2015, (313 in 2014 and 359 in 2015).
- The total Wolf Pack for participation is at 440 players for this season, as compared to 373 in 2014.
- PSS&WC membership continues to show strong growth, in 2014 there were a total of 3,011 YTD and in 2015 YTD there is 3,089 (+ 78). This does not include the GE memberships, which is up by +106 from this time last year.

Volunteers Summary:

- 22 Dancers from the Hoffman Stars Dance Company volunteered for the Halloween Bash. They either ran a game or gave out candy on the trick or treat path.
- Human Resource processed 2 new and 1 returning volunteer.
- 1 volunteer for the Pumpkin Fest for 3 hours; 8 volunteers for the Seed Collecting at Charlemagne for 16 hours total; 2 volunteers in the 50+ center for a total of 4 hours.
- The Raptors had 21 volunteers for 100 hours of daily maintenance and raptor care and 50 hours for phone/office work.



Youth Athletics

Youth Baseball

- Fall baseball season ended on 10/17 with playoffs. HEPD won the Mustang Level and the Bronco Level. Our pony team made the final 4, losing 8-7 to the eventual champions. Staff believes that this shows that the improvements we have made over the past two years in baseball (fall baseball/extended tournament team/more games/better summer camps) is paying off in the players skill development.
- **Indoor practice time** - A new addition to the upcoming 2016 spring season is any player who signs up before February 1st will participate in indoor practice time. This will give players 2 more months of fundamental work before their first game.

Youth Softball

- Our 5/6th grade tournament team competed in a round robin tournament in Schaumburg the weekend of September 25th. They won 1 game and will continue to practice throughout the month of October to prep for an indoor tournament this November.

Youth Basketball

- Youth basketball registration is starting to come in. Below is numbers from 2014-15 vs the numbers for 2015-16 Season as of October 31st.

| Year | 1/2 coed | 3/4 boys | 5/6 boys | 7/8 boys | 3/4 girls | 5/6 girls | 7/8 girls | Total |
|-------------|---------------------|-----------------|---------------------|---------------------|------------------|------------------|------------------|-----------------|
| 2014-15 | 44 | 62 | 67 | 37 | 16 | 12 | 1 | 239 |
| 2015-16 | 51 (+7) | 65 (-3) | 64 (+3) | 30 (-7) | 22 (+6) | 8 (-4) | 3 (+2) | 243 (+4) |

- New for the 2015-16 season we will host an all-star game for the 3/4, 5/6 and 7/8th level. We will also create tournament teams at the 5/6th level and 7/8th level to compete in a year end feeder basketball tournament.
- Coaches, Staff and Referee meetings are scheduled to take place in November.

- Girls Feeder basketball will have an 8th grade team and a 7th grade team this season. In 2014 we had zero feeder teams, in 2015 we had 1 feeder team and now for 2016 we will have 2 feeder teams.

Youth Lacrosse Program

- The past 8 weeks HEPD has put on a fundamental lacrosse program at Pine Park. Varsity coaches from Hoffman Estates high school along with former players instructed the camp. Players learned the fundamentals of lacrosse for 1.5 hours on Thursday nights. The program had 13 participants. We will run camps in spring and summer to build up a participant base that will build to an in-house league.

Youth Soccer

- Soccer season which started Saturday, September 12. We increased the league this season by 6 players. From 355 participants to 361, year to year.

Youth Volleyball

- Currently taking registration for the fall season.
- Registration emails have been sent to past participants along with cross marketing to youth baseball/softball, youth soccer, and youth basketball participants.



Early Childhood

| Preschool: | 10/2014 | 10/2015 | Var +/- |
|-------------------------|------------------|------------------|----------------|
| Threeschool 15-16 | 15 TC 11 WRC | 12 TC 13 WRC | -1 |
| 2's Playschool 15-16 | 30 TC 25 WRC | 30 TC 24 WRC | -1 |
| Preschool 15-16 | 116 TC 69 WRC | 127 TC 66 WRC | +8 |
| Early Learning Center | 25 | 34 | +9 |
| Total Preschool: | 291 | 306 | +15 |

STAR

| Program | 10/2015 | 10/2014 | Var. +/- |
|----------------|----------------|----------------|-----------------|
| District 54 | 268 | 315 | +47 |
| District 15 | 33 | 46 | +13 |
| WRC KSTAR | <u>12</u> | <u>11</u> | <u>-1</u> |
| Total | 313 | 372 | + 59 |

- KSTAR is only operating through District 15 at WRC. TC no longer has a need for the program since D54 went to all day kindergarten. We have incorporated kindergartners into our STAR program for families who needed the extended care.



50+ Club

Volunteerism

Volunteers – 2 volunteers – 4 hours total
(newsletter/birthday mailing/center decor)

Classes offered in October

Basic Exercise, Gentle Yoga, Tai Chi, Spanish, Writing, Line Dancing, new Chair Fitness, Snack Well!

Athletic opportunities offered in October

Pickleball, Volleyball, Bicycle Riding, Ping Pong, Billiards, Walking

Upcoming trips

Carole King: Beautiful, Supper/Zoo Lights, Chi, Lake Barrington Woods Retirement Community-lunch/tour/entertainment (held all day parts/weekdays, week nights, weekends)

Evening/Special Programs

Health Screenings – flu clinic added
Pub Quiz Night (3rd Thursdays/6:00 pm) – 26 participants - held at 50+ Center
Book Club

Friday post lunch programs (October)

10/2 Meet new 50+ Personal Trainer

10/16 Coloring Workshop

10/23 Pot Luck

10/30 Halloween Celebration (w/Schaumburg Twp District Library)

Organized Activities

Bingo at Culver's/monthly

Other

Holiday video with C&M Department
Vendor at Brookdale Hoffman Estates Wellness Fair
Presented on 50+ program at The Barn, Schaumburg
Met with fellow IPRA Sr Committee member to prep for Conference presentation on the future of Senior Centers
Attended Alden Poplar Creek Advisory Board Meeting
Seminar at ManorCare, Rolling Meadows, on Brain Health
Assisted out-of-work senior executive identify job opportunities/resources
Assisted senior identify resource to aide elderly couple living alone that needs help



Ice Operations

I.C.E Academy

- The Basic Skills program started the fall session the second week in Sept. 237 skaters are enrolled in the fall session. In 2014 there were 239 skaters to start the session.

- Staff is putting together day off school skate camps for the fall session.

Wolf Pack

- The Wolf Pack Hockey Development program started September 8.
 - Tuesday / Saturday class has 46 players. (50 players 2014).
 - Wednesday / Saturday class has 28 players. (20 players 2014).
 - Jr. Wolf Pack has 75 skaters. (63 skaters 2014)
 - Sunday house league has 33 players. This program replaces the 3x3 league.
 - *These programs take ongoing registration throughout the season*
- The NWHL Wolf Pack Hockey 2015/2016 season got underway the beginning of September. 192 players are participating this season – 1 less Mite team this year as the Coyotes formed a 2nd Mite Travel team. (218 players – 2014). This season there is also 1 girls team playing at the Squirt level
- The total Wolf Pack for participation is at 440 players for this season, as compared to 373 in 2014.

Ice Rink Information

| <u>Program</u> | <u>9/2015</u> | <u>9/2014</u> | <u>Var. +/-</u> |
|----------------------|---------------|---------------|-----------------|
| • Public Skate | 41 | 253 | -212 * |
| • Freestyle | 268 | 230 | +30 ** |
| • Drop In/Homeschool | 183 | 215 | -32 |

- * Sunday public skate was taken off the ice schedule due to the increase in hockey ice time requirements and the lack of public participation. Staff will instead be utilizing any ice that Wolf Pack teams are not using on weekends to make available for public skate times. These times will vary and may not always be available every weekend due to the number of teams who would have the choice to use this ice.
- ** A new freestyle program was implemented for the fall season. Rather than ½ hour contract ice. Staff put together an Unlimited Pass for the month. It sells for \$100 and in Sept. there were 24 skaters enrolled in the program.
- Chicago Wolves preseason game took place Saturday, October 3, at 7pm.



Prairie Stone_{tm} Sports & Wellness Center

| October Membership Totals | <u>2014</u> | <u>2015</u> | <u>+/-</u> |
|----------------------------------|--------------------|--------------------|-------------------|
| | 3,011 | 3,089 | + 78 |
| GE Members | <u>329</u> | <u>435</u> | + 106 |
| Total Memberships | 3,340 | 3,524 | + 184 |

Member Services

- The enrollment promotion for the month of October extended a special discounted enrollment fee of \$31 along with free October dues upon mention of our digital ads or our direct mail jumbo postcard. Prorated dues applied to those who enrolled without mention of the ads. The Member Services team was encouraged to use discretion and leverage prorated dues remaining for the month of October in order to secure enrollments for the month. The special enrollment promotion was advertised on a jumbo direct mail postcard that was targeted for distribution to 10K single family homes within a 7 mile radius of the fitness center in selected postal codes.
- The ongoing Friends in Fitness member referral program continued to be a primary force in generating new memberships; the club cash incentive corresponding with this referral program rewards current members with a \$25.00 club cash reward for referrals who enrolled as members. These promotions have proven to be popular and effective among prospective clients and among the most productive of marketing efforts.
- The ENROLLMENT FEE banner on the north side exterior remained mounted on the building along with the east side banner, both of which continue to attract many prospective clients. This second banner provides visibility/identity of the building for westbound traffic on Route 72 and compliments the signage panels installed in the spring of 2014. Likewise, both internal and e-based targeted marketing were utilized to inspire member referrals as well as to reach all HEPD clients throughout the community. The HEPD bi-monthly eBlast included the enrollment promotion details, and targeted emails through Retention Management continued to be sent throughout the month to promote the club cash incentive for member referrals with additional incentives promoted on Facebook and the HEPD and PSS&WC websites. The PSS&WC enrollment special was also advertised on each of the District's electronic marquis signs throughout the community. The PSS&WC enrollment special was also advertised on the VHE electronic marquis located at the corner of Shoe Factory Road and Beverly on the southwestern edge of Hoffman Estates.
- The number of credit card denials following October billing continued at a manageable pace. Efforts that were implemented within the Member Services and Billing offices to continue to contact members proactively to obtain updated information for billing continued aggressively during the month of October. These efforts include phone calls, emails, form letters, and person-to-person contact upon check in at the Service Desk. With such efforts being taken consistently from month to month, the number of 90-day cancellations continues to decline as the team is becoming increasingly successful at connecting with members in the first 30 to 60 days following billing to reconcile account balances.
- With the barter membership/marketing agreement now secured with the Chicago Cougars Junior Hockey Club, the Member Services team is beginning to work with team management to creatively market PSS&WC at games held at the Sears Centre. Tickets provided by the team are being utilized for club retention promotions on a weekly basis while efforts are underway to set up other cross promotional opportunities within the District. The agreement is valid through spring 2016.

- The Member Services team participated with the C&M team at the recent Village of Hoffman Estates Wellness Day event. Various club services such as personal training, health coaching, and nutritional programs were promoted along with the attractive membership discount opportunity for VHE employees.
- The Member Services Supervisor has secured a new corporate membership relationship with Toll Brothers and the The Woods of South Barrington community. This area of South Barrington had previously been difficult to penetrate, however, through this new relationship, promotional materials specially designed for the community will be distributed in all welcoming portfolios that are provided to new and existing homeowners within this development. There are currently approximately 85 residences within this community.
- The Member Services team has been in preliminary discussions with Dan Plote of Plote Construction Inc. regarding the interest the company had expressed in membership opportunities at PSS&WC. Plote Construction, Inc. is regionally based and employs over 700 employees in various roles. Potential may exist for an agreement that could include partial subsidy by the company for select employee memberships all in an effort to construct an employee wellness program for their employees.

Operations and Fitness Departments:

- The PSS&WC Key Team continued discussions during the month of October to further discuss ideas to extend celebratory club activities through the end of the year to commemorate the club's 15 year anniversary. A special Member Social has been scheduled in early November at Pinstripes in the Arboretum that will provide a casual forum for member/staff interaction. The special anniversary celebration launched officially in September with popular retention activities like member BINGO (which rewarded special incentive prizes to various winners based on club usage/visits) and Member Appreciation Day (which consisted of special hourly raffles for member incentives). Special anniversary t-shirts have been purchased to be used as special incentive gifts for various member activities scheduled to commemorate the anniversary through the end of FY15.
- Efforts are continuing with the Flores Rosales Family Group to fine tune operations within the new Summit Café, now in its fourth full month of operation. The café owners have proposed a reduction of operating hours while reducing the menu to a select number of preferred options based on member feedback that include smoothies, wraps, sandwiches, and vending items only. The café owners purchased a commercial coffee machine and corresponding coffee pods to offer as a convenient replacement for the early AM hours that the café is closed. Members are able to purchase the pods for \$1/each at the Service Desk in the early AM hours through 11am Monday thru Friday.
- The leadership team at PSS&WC attended the annual regional fitness expo and convention (Club Industry) in Chicago during the month of October. This experience provides educational workshops for professional development as well as networking that is specific to the fitness and health and wellness industry.
- PSSWC has an upcoming Nutrition Workshop, Metabolism Boosting, taught by Kathy Brown which will be held on November 16.
- Personal training rewards program has had 7 clients Perform 20, 1hr Private Sessions and have Earn 1 FREE 1hr Private Session. This rewards program provides

incentive for the personal training client for on-going purchase and use of personal training sessions.

- Within the area of group fitness Class participation has remained steady. Highlighted classes include: Zumba 30-35 Raise the Barre 25-30 Pump & Abs 20-25 Gentle Yoga 20-25

Programs and PSS&WC Swim Lessons

- Dru Steinhoff has accepted the full-time job position of Aquatic and Program Manager for PSSWC and Seascap. The job position includes managing the PSSWC group and private swim lessons, indoor climbing wall, PSSWC youth programming, and special events (including the Pumpkin Swim, Trick or Treat Climb Aqua Egg Hunt, Garage Sale) as well as managing Seascap Family Aquatic Center. Dru will be re-located to PSSWC as well as spend a portion of her working hours at Seascap, when in operating season. The transition will take place December 1st.
- The Climbing Wall Trick-or-Treat event planned for Tuesday, October 27th from 5:30-8pm. There were 35 registered for the event, with a maximum of 30. We were able to accommodate and accept the 5 on the wait list. It was a very well received event, being featured in the Daily Herald as well.
- The Pumpkin Swim was held on Saturday, October 24th. Kids swam with the pumpkins in the activity pool and then decorated a pumpkin to take home. Both sessions were full, with a total enrollment of 69 for the 1pm and 2pm event times.
- The October session of Parent's Night out (PNO) ran this month with 24. Kids dressed up for Halloween and trick or treated through the facility, played active games in the gym, ate a pizza dinner and watched a movie. The next PNO event is scheduled within November.
- The second fall session of indoor swim lessons is underway with 136 swimmers. Enrollment is still in session, with the first week of classes beginning 11/02. Final enrollment numbers will be reported after the first week and compared to 2014 session.
- In the area of private swim lessons there are currently 570 year to date in 2015 compared to 634 year to date in 2014. October of 2015 included 29 private swim lessons as compared to 40 conducted in 2014.



Triphahn Center

Triphahn Center Fitness and Operations:

| Membership | <u>10/2014</u> | <u>10/2015</u> | <u>Var. +/-</u> |
|------------|----------------|----------------|-----------------|
| Totals: | 904 | 887 | (17) |

General Summary:

- Room rentals continue to increase monthly. Dance World on 10/10, both Church groups continue to repeat their rentals on Sundays, Shah and Patel Volleyball rentals on Sundays as well as we held a few larger weekend parties for a special ethnic Holiday.
- Front desk employee Maddy Harford and Karen Shultz were both given awards for their involvement on 9/24. On 10/27, all members of the Hoffman Estates Fire department/Paramedics were given the BEST of Hoffman award for their involvement on 9/24's incident on the ice. Happy to report, the gentleman that was treated attended the Board meeting with his family and seems to be recovering very well!



Willow Recreation Center

| Membership | <u>10/2014</u> | <u>10/2015</u> | <u>Var. +/-</u> |
|-----------------------------------|-----------------------|-----------------------|------------------------|
| Fitness/Racquetball Totals | 342 | 373 | + 31 |

General Summary:

- Facility Rentals continue to be strong. Revenue generated at Vogelei in Oct. was \$2,800 compared to \$1,440 in 2014.



Dog Off-Leash Areas

Doggie Costume Contest- Staff worked with the C& M department to conduct an online doggie costume contest. Participants posted pictures of their dog in costume to the Bo's Run & Freedom Run Facebook page or on Instagram and viewers were able to "like" their favorite pictures. The dog best "liked", won a one year membership to either Bo's or Freedom Run and a gift basket donated by Bentley's Corner Barkery. The costume voted most creative, by staff, won a gift basket donated by Bentley's Corner Barkery.

Bo's Run:

- Breakdown for Bo's Run / Combo passes HE 149, Palatine 40, Barrington 19, Schaumburg 48, Arlington Heights / Mt. Prospect 4, Inverness 26. Additional towns are Rolling Meadows, Elk grove, Hanover Park.
- There were 28 guests to Bo's Run in Oct. compared to 12 in 2014.

Freedom Run:

- Breakdown for Freedom Run/ Combo passes Elgin – 159 HE – 97, Streamwood 73. Schaumburg – 22. Additional towns are Huntley, Hanover Park & S. Barrington, Elk Grove, Palatine, Wheeling & others.

| Dog Park Passes | <u>10/2014</u> | | <u>10/2015</u> |
|------------------------|-----------------------|----------|-----------------------|
| Bo's Run | 335 | Bo's Run | 243 |
| Freedom Run | 353 | Freedom | 304 |
| Combo | <u>78</u> | Combo | <u>76</u> |
| | 766 | | 623 * |

* This number will slowly start to increase as we see more owners and dogs return after the dog flu scare (as that confidence builds), but we do not expect the number to return to the 2014 numbers and the prior years due to the number of new parks in the area.



Communications and Marketing

PROGRAM PROMOTIONS

Staff worked with program managers to promote Pumpkin Fest, Parents Night Out, Pro Am Scramble, Make A Difference Day, Trick or Treat Climb, Halloween Bash, Pumpkin Swim, Prairie Stone memberships, 50+ programs; youth sports..

Community Calendar Submissions to: Daily Herald, Chicago Tribune, Hoffman Estates and Schaumburg Chambers and Hoffman Estates Visitor's Bureau.

Doggie Costume Contest – Began in October to promote dog park memberships. Residents post pictures of their dogs in costumes on Facebook and Instagram. Social media users vote by "liking" the photos. The winner with the most likes and also a winner chosen by C&M staff will win a one year membership to the dog parks, plus a gift basket donated by Bentley's Corner Barkery. Contest ends 10/31, so far we have increased Facebook likes on the Dog Park Facebook page by more than 100 likes. In addition, we had 19 new memberships between 10/7-10/27/2015, but only 3 new memberships the same period last year. This contest was promoted via our marketing channels: marquee, web, eblast, digital signs, Facebook and Instagram. Facebook Engagement for each post has been over 100 people reached. Facebook Engagement for each post has been over 100 people reached. Most the photos were posted to Facebook, three to Instagram.

COMMUNITY EDUCATION

"Thor Guard" – a video produced by C&M that educates viewers on what Thor Guard is and how to interpret its sirens. Ran Sept 8-Oct 14.

"Take a Walk for Your Health" – a video produced by NRPA to promote the benefits of walking. Appeared as our Featured Video on our home page from Oct 14-27. Also promoted on social media.

"Fall in Love with Our Parks" – a video produced by C&M to promote the beauty of our parks during the fall. Appeared as our Featured Video on our home page starting Oct. 27, and promoted in social media.

Weeds or Wildflowers? – A four-part series of articles published on Schaumburg Can website and in Winter Park Perspectives to educate about why we must control invasive species and the many methods including controlled burns, goats, and volunteer events. Once the printed Park Perspectives is released, the series will run on our website and social media.

PUBLIC RELATIONS & ADVERTISING

Daily Herald Trade Ads, appearing in Neighbor Section on Sundays 2xs per month:
Bridges Holiday party special.

OTHER

Park Champion Initiative - Director Kies and C&M Superintendent Manisco took NRPA's Park Champion pledge to help engage local legislators. In 2015 NRPA phased out its annual Legislative Forum and launched its Park Champions initiative to create a force of year-round ambassadors for their community to local officials. We will create a calendar of events to invite legislators to, and work to engage them with the district.

MARKETING DASHBOARD



Mobile App Downloads

The app has been available since April 25, 2014; as of October 27, 2015 we have had 1,356 apps downloaded.



Mobile Access

Results to date are positive, showing more users accessing heparks.org on mobile devices or tablets. We are looking for a greater percentage of page views by mobile devices and fewer via desktop. Benchmark column indicates how users accessed HEparks prior to the app and mobile-friendly website. (Responsive mobile-friendly website launched Oct 28, 2014; app launched April 25, 2014; mobile WebTrac launched in late November 2014.)

| Source: Google Analytics | Benchmark: Feb 2013-Feb 2014 | Sept 1-24, 2014 | Sept 1-24, 2015 | Change from last year |
|--------------------------------|---------------------------------|-----------------|-----------------|-----------------------------|
| Desktop | 63% | 55% | 51% | -4 |
| Mobile | 27% | 34% | 44% | +10 |
| Tablet | 10% | 11% | 8% | -3* |

*A decrease in tablet views is speculated to be a result of more mobile phone use as mobile phone screens are increasingly larger. Tablet sales have leveled off. It is more convenient to use a smart phone which is always within reach.

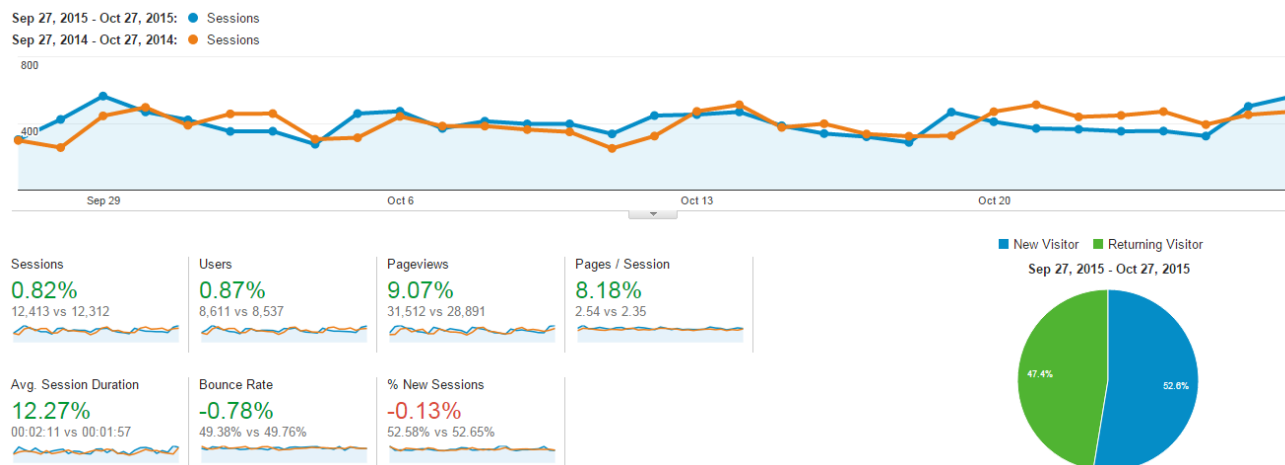
(<http://time.com/3532882/people-arent-buying-tablets/>)

[We are seeing greater numbers of people reading our weekly email on their mobile phones. See additional reporting below in Email.](#)



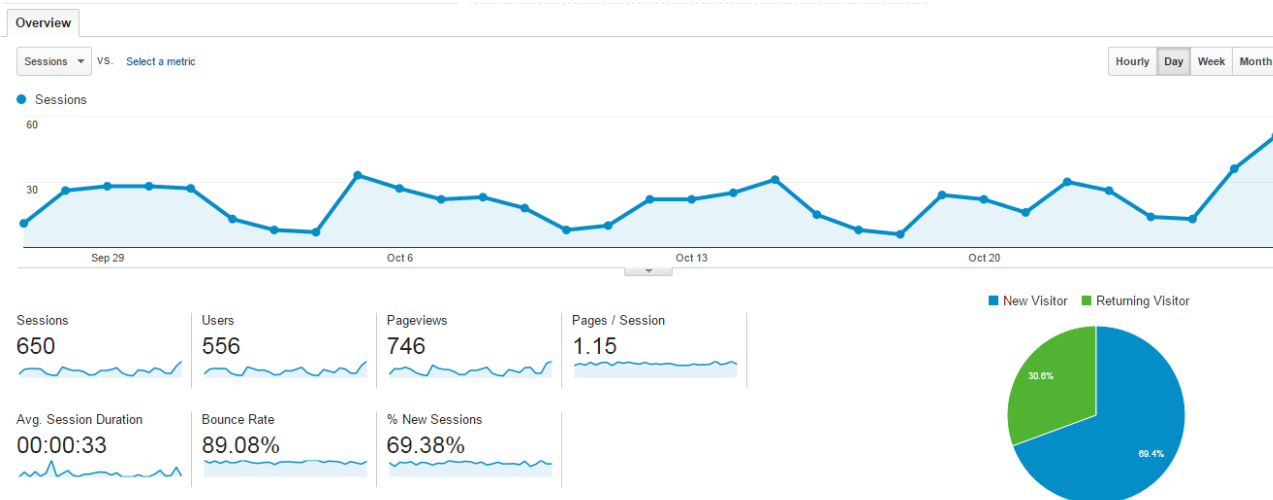
Website HEParks.org Google Analytics

This month hits to the home page are slightly up from last year, with pageviews and average session duration up quite a bit.



Program Guide Online

Indicates how many times people are viewing the electronic version of our program brochure on our website. It appears that folks are viewing the Program Guide on the weekends, and registering online during the week (see below). However, we are seeing a trend of fewer people accessing the Program Guide online, most likely attributed to more mobile use and the Program Guide is not mobile-friendly. Webtrac is reporting increases in usage and 4 pages per session, suggesting that people are using Webtrac to browse for programs on their phones. Staff will seek out a more mobile-friendly solution. Note: There is no 2014 comparison data available for the Program Guide for this quarter.



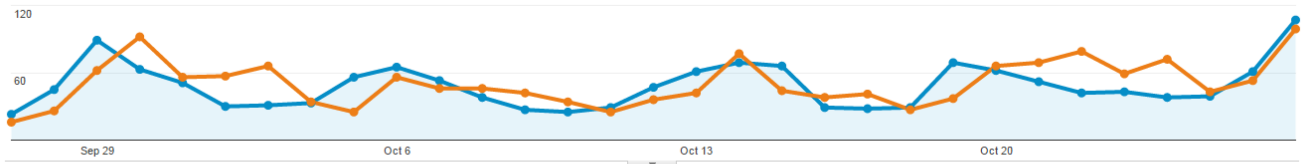


WebTrac/Online Registration Page Hits

Google Analytics – Hits peak mid-week. We still see an increase in hits the week right before sessions begin.

Sep 27, 2015 - Oct 27, 2015: Sessions

Sep 27, 2014 - Oct 27, 2014: Sessions



Sessions

-4.15%
1,500 vs 1,565



Users

3.15%
1,180 vs 1,144



Pageviews

1.20%
6,664 vs 6,585



Pages / Session

5.59%
4.44 vs 4.21



Avg. Session Duration

10.34%
00:02:47 vs 00:02:31



Bounce Rate

-30.44%
0.27% vs 0.38%



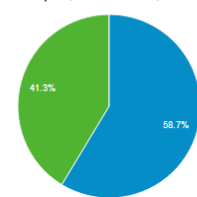
% New Sessions

11.43%
58.60% vs 52.59%



New Visitor Returning Visitor

Sep 27, 2015 - Oct 27, 2015

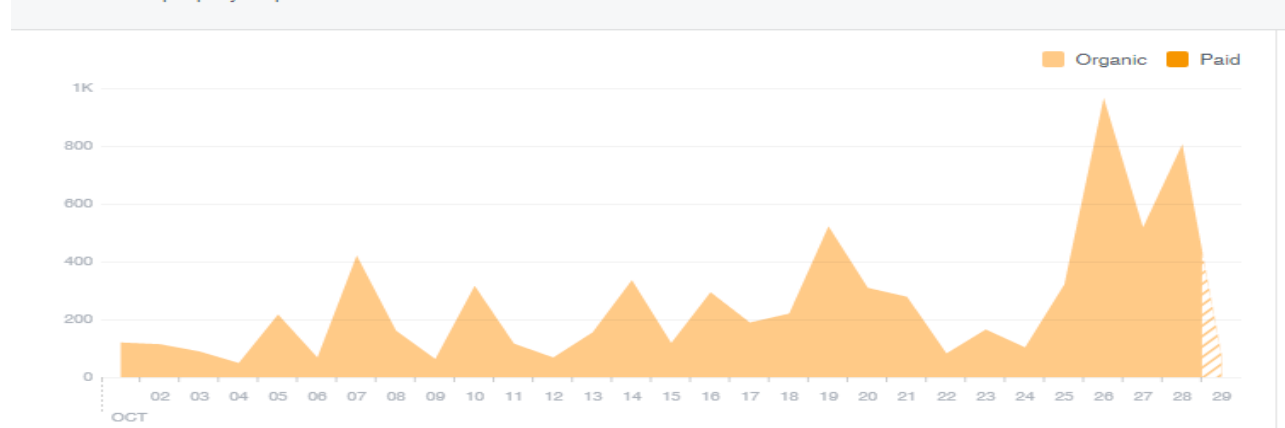


Facebook Reach

Total Likes surpassed 2,000 this month. Our goal is engagement: The more people tag, share and comment on posts the greater the reach. 28 Days Page Engaged Users (Col G): The number of people who engaged with our Page. Engagement includes any click or story created in October = 15,953. See the chart below for a list of our most successful posts this month, which explains the "peaks".

Post Reach

The number of people your post was served to.



Top 5 Most Successful Posts in October (Posts that reached more than 200 people)

| Post Message | Type | Posted | Lifetime Post Total Reach |
|--|-------|-------------------|---|
| | | | Lifetime: The total number of people your Page post was served to. (Unique Users) |
| Congratulations to Alex Ruthe! Alex is a long time Wolf Pack hockey player, on the Midget Major travel team that won the league NIHL Championship, and was recruited by Purdue University to play on the Boilermakers Ice Hockey Team. Way to go Alex! | Photo | 10/26/15 12:41 PM | 1026 |
| What a great time we had at Parent's Night Off this past Saturday! Make sure to register for our next event coming up on November 21---> http://ow.ly/TzRU | Photo | 10/19/15 6:31 AM | 609 |
| Congratulations to these two talented tennis players who practice at our very own Prairie Stone Sports & Wellness Center! | Link | 10/28/15 4:54 AM | 530 |
| #Science on the playground??? It sure was last week at Triphahn Center! Students learned about the praying mantis. | Photo | 10/25/15 8:31 AM | 387 |
| Congratulations to the Hoffman United U12 Iron Men on their championship victory at the Lakers Classic tournament! | Photo | 10/14/15 9:03 AM | 326 |

Top 20 Highest Posts this Quarter

| Post Message | Type | Posted | Lifetime Post Total Reach |
|--|-------|-------------------|---|
| | | | Lifetime: The total number of people your Page post was served to. (Unique Users) |
| Congratulations to Alex Ruthe! Alex is a long time Wolf Pack hockey player, on the Midget Major travel team that won the league NIHL Championship, and was recruited by Purdue University to play on the Boilermakers Ice Hockey Team. Way to go Alex! | Photo | 10/26/15 12:41 PM | 1026 |
| What a great time we had at Parent's Night Off this past Saturday! Make sure to register for our next event coming up on November 21---> http://ow.ly/TzRU | Photo | 10/19/15 6:31 AM | 609 |
| Congratulations to these two talented tennis players who practice at our very own Prairie Stone Sports & Wellness Center! | Link | 10/28/15 4:54 AM | 533 |
| Happy 50th Year to National Recreation & Parks Assn from Hoffman Estates Park District! #NRPA50 #NRPA #HEPD #HEParks | Photo | 8/27/15 6:22 AM | 512 |
| HEPD has two certified Monarch Waystations! To find out more check out the insert in the #FALL brochure! | Photo | 8/28/15 8:25 PM | 485 |
| #Science on the playground??? It sure was last week at Triphahn Center! Students learned about the praying mantis. | Photo | 10/25/15 8:31 AM | 387 |
| Thanks to Tom Newfield & his wife Ashli for sharing this beautiful picture from a day of #soccer at Cannon Crossings! | Photo | 9/29/15 8:16 AM | 381 |
| #HEPD and The Northern Illinois Raptor Center have combined to bring The Raptor Center to Vogelei Park!---> http://ow.ly/RWF41 | Link | 9/8/15 11:42 AM | 360 |
| Happy 50th Year to National Rec & Parks Assn from Hoffman Estates Park District! #NRPA50 #NRPA #HEPD #HEParks | Photo | 8/27/15 6:22 AM | 352 |
| Black Bear Park has an amazing Disc Golf Course. It's a great way to spend time with friends and try something #NEW! | Photo | 9/4/15 9:04 AM | 347 |
| Way to go Coyotes! The team played in the Pekin tournament and won 3-2 in a shootout after losing to them earlier in the tournament! | Photo | 10/26/15 7:49 AM | 337 |
| Congratulations to the Hoffman United U12 Iron Men on their championship victory at the Lakers Classic tournament! | Photo | 10/14/15 9:03 AM | 326 |
| 10:00 am Soccer at Canyon Crossings | Photo | 9/12/15 8:43 AM | 324 |
| Happy 50th Year to National Recreation & Parks Assn from Hoffman Estates Park District! #NRPA50 #NRPA #HEPD #HEParks | Photo | 8/27/15 6:22 AM | 319 |
| See the winning images from our weekly photo contest | Link | 9/18/15 10:02 PM | 310 |
| Well, how's this for romantic!? Love was melting the ice this past week when one lucky girl got a special invitation to #homecoming! Good news - she said YES! | Photo | 9/19/15 11:30 AM | 290 |
| Thank you to everyone that participated at Zumba the 60's last night at Prairie Stone Sports & Wellness Center! We hope you all had as much fun as we did! | Photo | 9/18/15 9:41 PM | 278 |
| Our Figure Skating Girls were having a great time this past week at practice! Keep up the great work! Join the fun and register for upcoming classes here!--> http://ow.ly/SALGI | Photo | 9/23/15 2:27 PM | 277 |



Conversion Rate – What percentage are registering online?

Derived from a RecTrac report that indicates the percent of registrations made online vs in person. New responsive/mobile-friendly website launched Oct 28, 2014. Mobile WebTrac was launched in late November 2014. Progress is being made each year in online registrations:

| | |
|---------------|--------|
| 2011: | 21% |
| 2012: | 26.3% |
| 2013: | 30.69% |
| 2014: | 33.54% |
| Jan-Oct 2015: | 34.86% |



Email Blast Results, Constant Contact

| | <u>Sent/Open</u> | <u>Mobile</u> | <u>Bounces</u> | <u>Click-thru</u> |
|---------------------------------------|------------------|---------------|----------------|-------------------|
| 2015 Sports & Rec industry | --/20% | 50+% | 8% | 7% |
| HEPD General EBlast, Oct 13 | 19K/17% | 62% | 3% | 9% |
| 50+ Club October | 950/35% | 44% | 2% | 3% |
| Days off School reminder 10/5 | 236/55% | 55% | 0% | 13% |



Opens = Emails our contacts received and viewed.

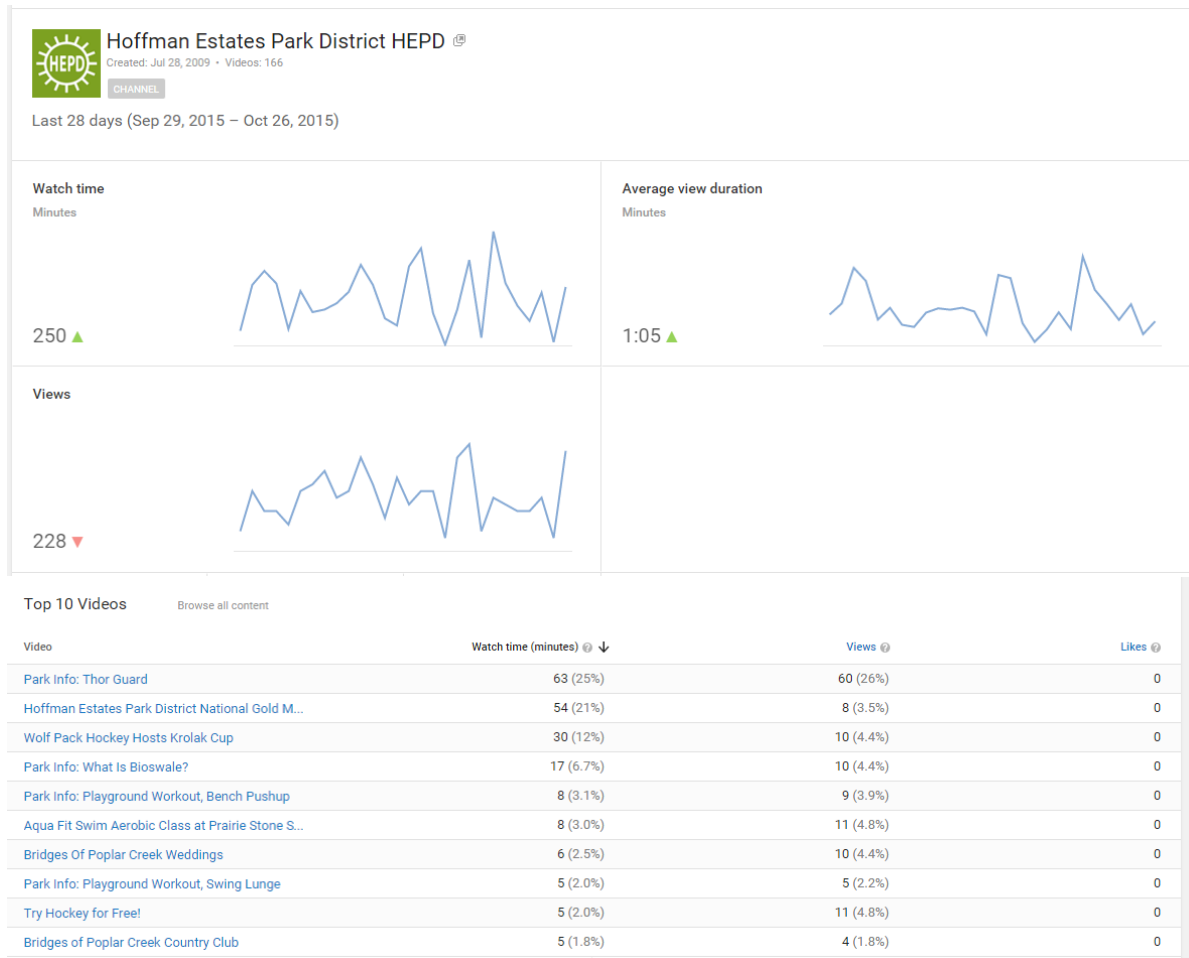
Mobile = Percent of emails opened on a mobile device

Bounces = Emails sent, but not received by our contacts, suggests the quality of the data.

Clicks = Contacts who clicked on a link within our email.

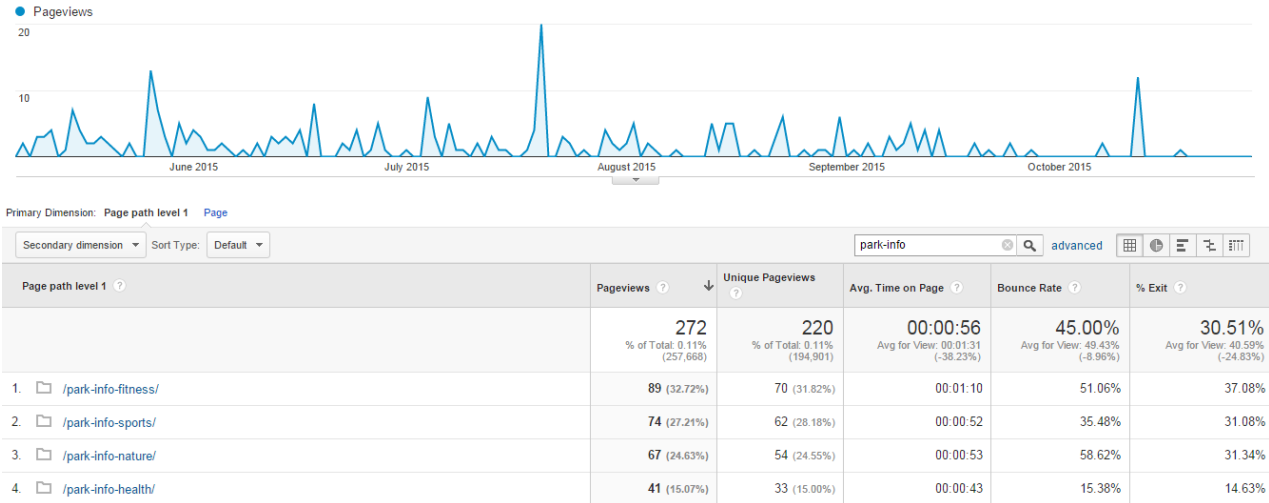
YouTube Metrics

Below is a list of our Top 10 Videos with the most traffic and minutes watched over the past 30 days. Featured videos on our hepark.org website this month were Thor Guard" which ran Sept 8-Oct 14 and "Take a Walk" which ran Oct 14-27.



Park Info

Through a cooperative project with the Director of Planning and the Parks Maintenance department, on May 7 we implemented a new community education program called Park Info. Twenty three signs were placed in four parks (Evergreen, Black Bear, Cannon Crossings, South Ridge and Vogelei) containing QR codes that link to videos on 4 topics: Sports, Fitness, Nature and Health. Each month a new video will be available for park goers to browse for more information on a variety of topics. Data period is May-7 to date. As the weather gets cooler, with less traffic in the parks, hits to the videos are going down.



Bridges of Poplar Creek

General Programs

- The last golf event for the season is Saturday, November 7th. The Turkey Shoot has a full field of 50 teams. Each participant will receive a 10 to 12lb turkey in this festive event.
- Event Highlights: Bridges Final Challenge was on October 10th. We had 30 players compete in this 18 hole stroke play event. This year's winner was Greg Ring with the score of 79. The Challenge Cup was held on October 24th. In this unique event we had 12 players from Bridges play a Ryder Cup format against 12 players from Randall Oaks Golf Club. Bridges came close to winning the cup for the first time. Randall Oaks did retain the cup winning 13.5 points to Bridges 10.5 points. Pro Am Scramble was on Oct. 11th. We had 29 teams participate in this highly competitive 4 player scramble. This season we had a tie at 15 under. Congratulations to the winning team of Brandon Holtz, Allen Bradwell, Jordan Carpenter, and Mike Cushing, along with the team of Craig Onsrud, Bryan Brucker, Adam Havens, and Dustin Wickenhauser.

Golf Rounds

| ROUND TOTALS | | |
|------------------|--------|--------|
| 2013 | 2014 | 2015 |
| 2,780 | 2,499 | 2,559 |
| YTD ROUND TOTALS | | |
| 2013 | 2014 | 2015 |
| 30,812 | 28,970 | 28,851 |

Range Information

| RANGE BASKET SALES TOTALS | | |
|-------------------------------|--------|--------|
| 2013 | 2014 | 2015 |
| 1,012 | 932 | 944 |
| YTD RANGE BASKET SALES TOTALS | | |
| 2013 | 2014 | 2015 |
| 17,749 | 18,341 | 18,148 |

Video Gaming

| VIDEO GAMING REVENUE | |
|------------------------|------------------------|
| 2014 (10/1 – 10/30) | 2015 (10/1 - 10/15) |
| \$262.79 | \$209.28 |
| YTD REVENUE | |
| 2014 (6/16 - 10/30) | 2015 (1/1 – 10/15) |
| \$2,085 | \$2,511 |

Communications & Marketing

Marketing/Advertising

- We did 6 email blasts for the month advertising; Fall Frenzy, Pro Am Scramble, Final Challenge, Turkey Shoot, Wedding & Banquet Specials and Promotions, and Special HEPD events.
- BPCCC Fall Frenzy is a new fall golf promotion. For the remainder of the 2015 season all players who play 18 holes on Monday, Weds and Friday will receive a complimentary hot dog or brat and fountain drink and if they play on Tuesdays or Thursdays they will receive a free sleeve of golf balls.

Food & Beverage

For the month of October we had a total of 25 events: (34 events in 2014)

The breakdown is as follows:

7 breakfast meetings servicing 142 people

1 PDRMA training with a continental servicing 30

1 retirement party servicing 90

5 showers servicing 247 people

2 dinners servicing 248 people

2 luncheons servicing 183 people

1 reunion servicing 80 people

1 golf league dinner servicing 50 people

1 wedding with both ceremony and reception here servicing 32 people

1 ceremony only events servicing 180 people

3 golf events servicing 170 people

We currently have 15 events booked for November (12 events in 2014)

9 breakfast meetings servicing 162 people

2 luncheons servicing 129 people

1 dinner servicing 130 people

1 birthday servicing 40 people

1 baptism servicing 72 people

1 shower servicing 40 people

2016 = 13 ceremony and reception, 2 reception only, 1 ceremony only

2015 = 26 receptions 20 of which are hosting their ceremonies here plus 4 ceremony only

(wedding for September 19th cancelled their ceremony and reception, were expecting 200 guests)

2014= 29 wedding receptions plus 7 ceremony only booked, Of the 29 receptions; 23 did their ceremony and receptions here.

We are receiving a lot of calls for 2016 weddings. We are currently offering 10% off any Saturdays that we still have open for 2015.

For 2016 we are offering a free upgrade: chair covers/sashes, premium bar upgrade, sweet table, or late night snack. They get to select one if they meet the minimum. We are also introducing a price point option for \$49 per person for those small weddings that are looking for an inexpensive option to our full wedding package.

Golf Maintenance Summary

With winter approaching, our maintenance crew is down to a skeleton level. By the end of October we were down to our 3 FT staff members. Staff was able to complete the removal of 48 dead ash trees. The stumps have all been marked and with the help of Parks Department they will be removed the first week of November. The maintenance crew also performed course aerification on 10 Green to help the roots extend deeper into the ground going into winter. Staff has also started preparing the course for the winter months. Ball washers, benches and other items will be removed shortly. We also plan on blowing out the irrigation system the first week of November. Some other general maintenance items that staff performed were:

- Routine maintenance (mowing and leaf blowing)
- Dead heading all plants in the event area and around the clubhouse
- Cutting down all perennial grass beds
- Planted sod in some areas to minimize future maintenance on flower beds
- Equipment maintenance

ADMINISTRATION & FINANCE

- Attended HE Chamber Bon Appetite event.
- Attended leadership seminar with Schaumburg Business Association.
- Attended IAPD Legal Symposium.
- Attended PDRMA Health Program Council and Property Casualty Program Council.
- Staff presented 2016 budget and levy to all committees and Board.
- Finalized 2016 Limited Bond Issue.
- Established an accounts payable email address and have begun signing up for paperless billing when offered.
- Payroll Cycle Processing
 - 10/23/15 \$273,757.81
 - 11/06/15 \$280,692.84

Administrative Registration/EFT Billing

- EFT Billings for:
 - a. TC/WRC/PSSWC Fitness Centers
 - b. ELC (weekly)
 - c. Sponsorship
 - d. STAR
 - e. Pre-School
 - f. Dance Company
 - g. NWHL Hockey
- Administrative Registration for:
 - a. Financial Assistance
 - b. Travel Soccer
 - c. Adult leagues

Human Resources

- Processed 15 new part-time hires and 3 new volunteers.
- Concluded Annual Measurement Period for PPACA. All PT1 employees remained under 1560 hours and therefore do NOT qualify as FTE (full-time equivalent) employees.
- Conducted Hoffman U on employee benefits and upcoming Open Enrollment Period. Has led to increased participation in additional voluntary savings plans through IMRF and Nationwide.
- Attended furthering educational workshops:
 - IAPD Legal Symposium
- Participated in interview process for FT ELC Program Manager. Applicant selected was Wendy Stoner (promoted from PT Child Care Coordinator).

Technology

- TC server room UPS battery backup
 - New APC UPS has been installed and tied into our natural gas generator. By connecting that to the existing natural gas generator that we have here at TC, the server maintenance room and networking equipment will be provided a solid stream of electricity even if TC experiences an extended ComEd power outage.
- WebTrac Registration Server
 - HEPD-WEB02 is up and operational with an A rating from Qualys SSL Labs, Inc.
- New Virtual Server Host
 - HEPD-VH03 has been retired. New server host, HEPD-VH01 a new Gen9 HP server, has been installed and implemented.
- Server & IT Support room Renovation
 - Server room flooring has been installed on top of the existing carpet.
 - IT Office is currently being cleaned out for Maintenance to install new flooring and desks.

Memorandum No. M15-162

To: Board of Commissioners
From: Dean R. Bostrom, Executive Director
Date: November 20, 2015
RE: Renaming of Victoria Park Playground

Background

Board policy 5.01, Naming and Renaming of Park Sites, outlines the guidelines and process involved when a “park” is either named or renamed. The policy is noted below:

Board Policy 5.01, Naming and Renaming of Park Sites

The Board shall select names for new parks, buildings, facilities, athletic fields, or, when appropriate, to change the name(s) of existing parks, buildings, facilities, or athletic fields of the district that have not been dedicated. The Board may consider the following elements in determining the naming or renaming of parks, buildings, etc. (for purposes of this section only, "parks" shall mean parks, buildings, facilities, athletic fields, or other "namable" property of the District):

- A. Parks may be named after streets, geographical locations, historical figures, events, concepts or as otherwise determined by the Board.*
- B. Parks may be named for individuals or groups that have donated land or facilities to the District or made a significant financial contribution toward the development of parks.*
- C. Parks may be named for individuals or groups that have made exceptional contributions to the community. Names of individuals, including, but not limited to, District Commissioners or other public officials, may not be given to a park, building, facility or athletic field unless the individual is deceased.*
 - 1) The Board at public meeting should first announce the proposed name of the park, building, facility or athletic fields (requires a 5/7 vote).*
 - 2) A park site should only be confirmed and the name made official after a waiting period of at least sixty (60) days before the confirmation vote.*
 - 3) A 5/7 vote by the Board is required to name a park, building, facility, or athletic field or to change the name of an undedicated park, building, facility or athletic field of the District.*

The district currently has three such “parks” named after a deceased individual who made exceptional contributions to the community. In 1999 Kelly Park was renamed Cannon Crossing Park in recognition of Bill Cannon. Bill was a very active volunteer in the Hoffman Estates community and longtime park district volunteer for various youth athletic programs. In December of 2010, the Community Center and Ice Arena was renamed the Scott R. Triphahn Community Center and Ice Arena in recognition of Scott Triphahn. Scott was a highly influential park district commissioner for 12 years, a passionate volunteer youth athletic coach, founding president of Friends of H.E. Parks Foundation and steadfast pillar of Hoffman Estates.

In January 2015, Highpoint Park was officially renamed Joseph L. Fabbrini Park. Joseph L. Fabbrini was an individual who made exceptional contributions to the community and was one of several early community leaders who had a vision of creating a park district for Hoffman Estates. Joe served as one of the first park district’s commissioners and the first Director through 1967.

Implications

Peter Smith was a true champion and advocate for promoting equal access for all individuals with disabilities. Locally, Peter Smith was credited with being responsible for creating the Village of Hoffman Estates model accessibility ordinance. This ordinance was the first of its kind in Illinois and required that all public buildings be architecturally accessible to the handicapped. Eleven years before Peter was first elected to serve as Commissioner on the Hoffman Estates park district board, he served on the park district's Special Recreation Committee and was instrumental in spearheading the district's drop-in center for physically handicapped adults. Peter served as an active member of the Hoffman Estates Commission on Seniors and Disabled.

Beyond Hoffman Estates at the state level, Peter served as an Area Counsel Coordinator for the Governor's Committee on the Handicapped and was appointed to the Governor's Commission on Employment of the Handicapped. He played a lead role in the promotional short film "The Balance Sheet" sponsored by the Governor's Commission on Employment of the Handicapped as well as numerous TV public service announcements to promote equal opportunities for disabled individuals.

Nationally, Peter served on President Gerald Ford's Commission on the Employment of the Handicapped representing Hoffman Estates and the State of Illinois to advance equal employment opportunities for disabled individuals.

In addition to his contributions as an advocate for individuals with physical disabilities, Peter Smith was also elected twice to serve 4 year terms as a Hoffman Estates Park District Commissioner. Peter served the initial 4 year term from 1989-1993 and 1 additional year in his second term before he moved out of the Hoffman Estates boundaries to serve as Founder and President of NW Independent Living Group. Peter was also a member of the Hoffman Estates Zoning Board, President of Hoffman Estates High School Loyal Parents and member of the Hoffman Estates Jaycees.

Attached is a collection of newspaper articles, photographs, letters written and received by Peter Smith as well as his Obituary provided by his daughter Susan O'Sullivan and resident Diane Lawrence. Combined they provided a glimpse of Peter Smith's life in Hoffman Estates and the impact that he made as a community leader.

Included in the attached newspaper clippings is an article by Diane Jensen, staff writer for the Lerner Voice Newspaper, stating *Of all the things Pete has accomplished, it is with pride that he talks of his own community being the first in the state to adopt an accessibility ordinance. "I get a big thrill when I drive by the accessibility symbol on the Village Hall, Hoffman Estates High School, Church of the Cross and St. Hubert, knowing that it will be there at least 50 years. Maybe when my kids are grown, they will take their kids and show them the symbols and say that grandpa had something to do with it"*.

Peter Smith was a champion advocate for individuals with disabilities before the American's with Disabilities Act (ADA) became law. He is deserving of being recognized by the Hoffman Estates Park District for his exceptional contributions to advance the rights and opportunities of individuals with disabilities.

Peter's legacy to the community was his passion to advance equal opportunities for individuals with disabilities. As a Hoffman Estates resident Peter and his wife, Rosemary, raised their four

children on Kingsdale Drive, which is approximately ½ mile away from Victoria Park playground.

Victoria North playground is currently scheduled for renovation in the spring/early summer 2016. This playground is being designed to create the most ADA accessible playground in the district. Unique to this playground is the fact that the entire 6,000 sq. ft. play area will be covered with synthetic turf over solid engineered rubber surfacing. This synthetic turf surface will allow individuals easy access to the various play features. An extensive ramp system will allow equal access to above ground decks and play elements and transfer decks will provide assistance for those that need to get in and out of wheelchairs to use the equipment. When completed in the summer of 2016, this community playground will be the district's marquee accessible playground.

Recommendation

To recognize Peter Smith for his exceptional contributions as a champion advocate for individuals with disabilities, staff recommends that the board preliminarily approve the changing of the name of the Victoria North playground to **Peter M. Smith Playground**. If the board adopts the name with the required 5 out of 7 votes, the name can only be officially confirmed by the board 60 days after, or on January 26, 2016.

During the waiting period, the proposed name change would be presented to each of the park board's 3 standing committees, posted on the district's website and posted on a notification sign located at Victoria North playground. The website and notification sign will provide contact information regarding the proposed name change and the date/time of the park board meeting in which the confirmation will take place. The collective input received during the waiting period will be presented at that time.



Peter M. Smith Jr.

October 8, 1936 - August 2, 1995

Pete was a courageous, innovative, and tenacious man.

A champion of the disabled,
an inspiration to all who met him,
and a hero to those who loved him.

With personal achievements
too numerous to count,
his pride was never greater than that
which he had for his family.

In his death, as in his life, he led the way,
never losing his dignity or sense of humor.

As one of his favorite songs suggests,
"Celebrate good times, come on!"
Celebrate Pete's life,
for he lived and loved well.

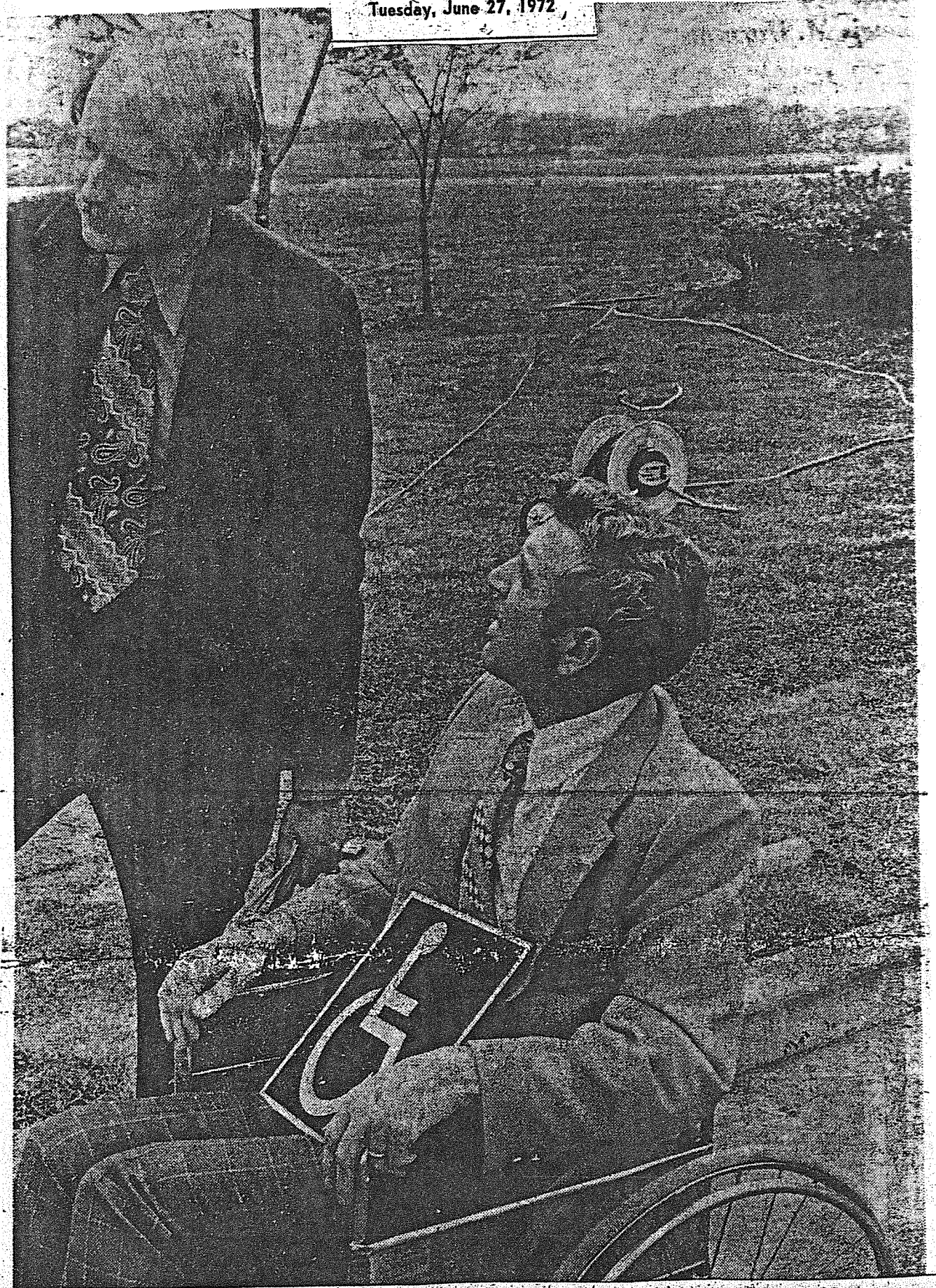
And now he walks again, among angels,
and in our hearts forever.

From his loving family.



FRESH FROM HIS movie debut in "The Balance Sheet," made for the Governor's Commission on Employment of the Handicapped, Pete Smith of Hoffman Estates checks some film cases while on the job at Novo Airfreight, Elk Grove Village, where he has been employed as a salesman for five years — three in a wheelchair.

Tuesday, June 27, 1972



RECOGNIZED AT Sunday's dedication of Hoffman Estates' new municipal building was Pete Smith, seated, a handicapped in the building's design. He holds the international symbol for buildings accessible to disabled persons. local Jaycee instrumental in gaining features for the

The HERALD

PADDOCK PUBLICATIONS

Hoffman Estates · Schaumburg

Wednesday, August 16, 1972

Though Handicapped, He Enjoys Life

Need Help? Just Call Pete Smith

by MARY HUTCHINGS

Pete Smith is going to frame his first movie contract and wait for Hollywood to call.

On a 24-hour pass from a recent hospital stay, he starred in his first film, "The Balance Sheet," made by Creative Establishment of Chicago.

The film will be distributed by the Governor's Commission on Employment of the Handicapped, of which Smith is an active and influential member.

Pete Smith is probably better known to Hoffman Estates residents as the civic leader who is responsible for the village's model ordinance — the first in Illi-

nois — which requires that public buildings be architecturally accessible to the handicapped.

Smith was stricken with multiple sclerosis more than three years ago. Though he now may dream of a motorized wheelchair, he said the only difference in his life "is that it takes me a little longer to get from Point A to Point B. A transportation problem — that's all."

His attitude toward his handicap is inspirational to those who meet him as he wheels in and out of civic activities in the village.

"THE ONLY PERSON who is handicapped is the one who thinks he is"

Smith said, radiating an inner strength and confidence that convinces and charms the listener.

"The day of the shut-in is gone," he added. "If I have any message I could get up on a soapbox and preach, it's 'get out and enjoy life. Come on in, the water's fine.'"

The man familiar to parade-goers as the guy "skiing" in his wheel chair behind the Jaycee car has long gotten over the "Why me?" period.

Smith's acceptance of what most would call a drastic change in his lifestyle is so remarkably good and his enthusiasm for

(Continued on page 3)

"getting involved in anything you want" is so contagious his doctor sometimes asks him to talk with other patients.

"If anyone thinks life is passing them by, please call me," Smith offered. He's happy to help people buy wheelchairs and then teach them the fine points of "driving" one.

A salesman for Novo Airfreight in Elk Grove Village, the father of four drives himself to work in a station wagon designed with hand controls. He joked that his home at 402 Kingsdale houses a "two-chair" family — one for the home that allows him to get close to things, and one for the road, sturdy enough to bounce down curbs and do "wheelies" up them.

AN AVID BEARS' fan, he didn't miss a home game last year, and with sons Bob, 12, and Patrick (P.J.), 6, will be rooting them on again this year.

His favorite sport, though, is "mental gymnastics."

It's hard to believe Smith when he describes himself as an "egomaniac," but he can quickly and accurately sense a person's "basic motivating factor" and readily admits that "fan" letters make him happy.

After the passing of the Hoffman Estates ordinance, his mail included inquiries into how to go about passing similar laws elsewhere, as well as anonymous "thank yous" from the handicapped and the elderly.

With the ranks of the handicapped being swelled here with the return of injured Vietnam veterans, Smith said the ramps and railings required in public buildings by the local ordinance will become even more important.

He praised the design of Woodfield, which "allows the handicapped to spend his money just as well as anybody else," and he's probably one of the few who has noticed the cut-away curbs on Michigan Avenue downtown and the half dozen Loop buildings with the "accessible to the handicapped" symbol.

Smith said he "couldn't make it without the help of my wife — my super-partner." His two daughters, Donna, 13, and Susie, 9, as well as the boys, the dog and two pet mice, keep the household busy. Smith included the Jaycees, who "won't let me be handicapped."

"You know, we don't have to bring the old theory of the city with us to the suburbs. We all need help; we can all help each other. Some are able to do more than others," Smith said.

Very few people do more to help than Pete Smith.

He laughed, "I get by with a little help from my friends."

THE HERALD

Tuesday, January 29, 1974

AND JAYCEES SUPERSTAR Pete Smith will be featured in TV public service announcements sponsored by Gov. Dan Walker's Committee on the Employment of the Handicapped, being released this week.

Films were made at Hoffman Estates High School and show the ramp and elevators used by wheelchair bound students. The ads will be used statewide during '74.

* * *

License plates to identify the handicapped

Special license plates to identify handicapped drivers were issued for the first time in Illinois last month.

The plates, which carry the international handicapped accessibility symbol and the numbers in the driver's address, are intended as a "security blanket" for disabled drivers, said Pete Smith of Hoffman Estates.

"This makes it very easy for law enforcement officers to identify handicapped drivers and offer help if necessary," explained Smith, who has served as an aide to Gov. Daniel Walker's Committee on the Employment of the Handicapped.

Illinois is the third state in the na-

tion, joining Kentucky and Maryland, to make these plates available, he said.

"The idea behind this, and other ideas for the handicapped now being promoted nationwide, is to get the disabled person out of his house and into the community," Smith continued.

He noted Illinois legislation now requires rest and parking areas equipped for persons confined to wheelchairs.

He also noted many municipalities are passing local ordinances specifying special parking areas be provided in shopping centers and other areas used by disabled persons.



PETE SMITH of Hoffman Estates is sued to handicapped drivers. Plates among the first Illinois resident to carry the international handicapped display special auto license plates is accessibility symbol.

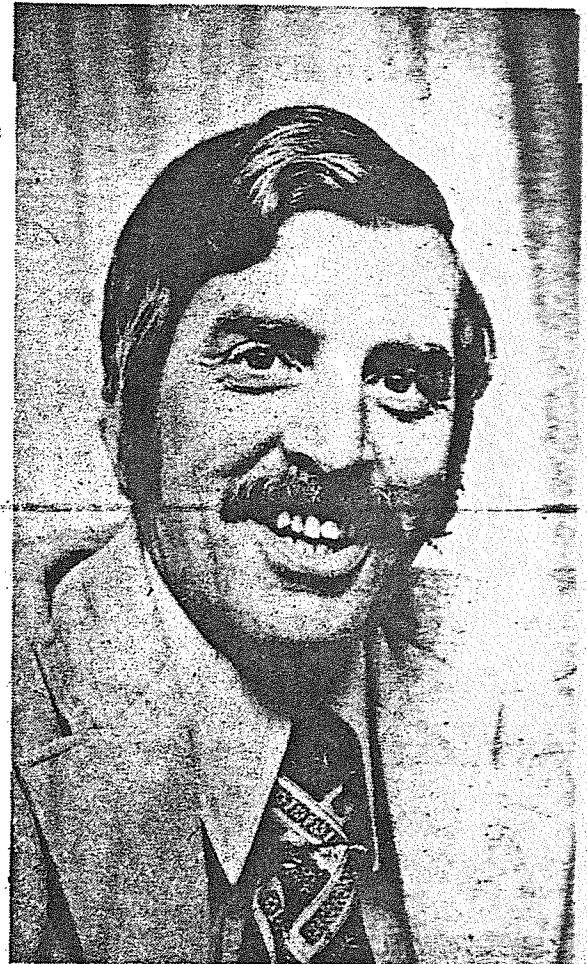
VOICE

of HOFFMAN ESTATES

HOFFMAN ESTATES, Wednesday, July 17, 1974

WHAT'S HAPPENING

Smith named council coordinator



PETE SMITH

Pete Smith, 402 Kingsdale, Hoffman Estates, has been named area council coordinator for the newly re-organized Governor's Committee on the Handicapped.

The area councils, currently being organized throughout the state, are intended to keep the committee regularly informed and involved with local activity—and non-activity—affecting the physically, emotionally and psychologically handicapped, according to Executive Director J. Douglas Forman.

Anyone interested in joining the Schaumburg—Hoffman Estates—Elk Grove Village area council should contact Smith, 885-1304, or Forman, 793-3270.



HAD IT not been for the efforts of Pete Smith, handicapped persons might not have found the Hoffman Estates municipal building accessible. The accessibility symbol on the concrete wall in front of the building indicates the fruits of Pete's labor of working with village officials to make them understand the problems of the handicapped. "All it usually takes is to make people aware," he says. (Photo by Herb Shenkin)

Pete shows handicapped can lead 'normal' life

By DIANE JENSEN
Staff Writer

IT WAS NINE years ago that Pete Smith found he could no longer run. "I was playing ball with the kids at the time. When I went to run after the ball, I couldn't," explains the 39 year old Hoffman Estates resident.

Realizing that something was wrong with him, Pete made an appointment the next day to see the doctor. That something, he discovered, was the beginning stages of multiple sclerosis (MS) which would confine him to a wheelchair in less than three years.

"My first reaction was quite normal," he recalls. "I asked myself the obvious questions. 'Why me?' 'What did I do?'"

Although MS did succeed in confining Pete to a wheelchair, it was unable to confine his determination and spirit to continue being a contributing member of society. His desire to make life less difficult for all wheelchair victims prompted him to become a volunteer on the Governor's Committee on the Handicapped, a state advisory group of which he is regional coordinator for suburban Cook county.

As such he has spoken to organizations and civic leaders throughout the state to make them aware of the problems of wheelchair living. "Making people aware is our biggest thing," Pete says, adding that the Governor's committee is concerned with recreation, employment, education, accessibility, legislation and transportation affecting the handicapped.

A member of the Jaycees when first afflicted with MS, Pete through his local chapter was instrumental in getting the state organization involved in Project: Breakthrough, a program concerned with accessibility for the handicapped. He has appeared on television shows, and short films to help educate the public on the plight of the handicapped.

This year he is president of the Hoffman Estates Loyal Parents, a booster group of Hoffman Estates high school.

THE VOICE salutes Pete for his outstanding contribution to removing barriers for the handicapped and as its Citizen of the Month for February.

As a 30 year old man with a wife and four children, Pete said he was depressed when he first learned he had MS. "I was in the Jaycees when it first happened," he recalls, adding that it was good for him because they are not the kind of group that "allows you to become depressed."

A salesman for Novo Air Freight, Pete said he learned he could lead a normal life. "My company was very, very good," he said, adding that much of his work could be done over the telephone.

Because Pete had enjoyed life as what he terms a "normal folk," he realized that many handicapped persons weren't able to the same things because of inaccessibility. Little things that he had taken for granted—like putting a dime in a coin-operated telephone, getting a drink of water from a fountain and using a public washroom—became impossible.

There is a desperate need to identify the handicapped so their needs can be known. "Right now we are only working with estimates," he says, explaining that HEW figures show that 10% of the people in this country are handicapped, not including the blind.

He said although the community is becoming more accessible, there are many handicapped persons who are not enjoying life. "If they are having any problems with their handicap, we would like to know," he said, adding that handicapped persons can live a normal life. "It's a question of knowing what you can do."

Of all the things Pete has accomplished, it is with pride that he talks of his own community being the first in the state to adopt an accessibility ordinance. "I get a big thrill when I drive by the accessibility symbol on the village hall, Hoffman Estates high school, Church of the Cross and St. Hubert knowing that it will be there at least 30 years. Maybe when my kids are

grown they will take their kids and show them the symbols and say that grandpa had something to do with it."

(Each month the VOICE honors someone in the community as Citizen of the Month. If you know of a deserving person, we would like to hear about him or her. Simply send the name, address and telephone number with a brief explanation they he or she should be selected. Nominations should be sent to Voice Newspapers, Family Living Editor, 1485 Tonne rd., Elk Grove Village, IL 60007)

Pat Gerlach



Jaycee gets White House bid

It's another case of Mr. Smith goes to Washington!

Hoffman Estates resident Pete Smith has received an invitation from the White House asking that he attend the April 28 meeting of President Ford's Commission on the Employment of the Handicapped.

Pete, a prime mover in the Illinois Jaycees push for wheelchair ramps in public buildings, is active in many handicapped programs.

* * *

PINEAPPLE from Hawaii and sourdough bread from California will arrive by special flight for Hoffman Estates Loyal Parents Flea Fair May 1 and 2 at Hoffman Estates High School, 1100 W. Higgins Rd..

HELP, with the aid of the Hoffman Estates High School student body, is promoting the event to raise funds for a \$5,000 community activities sign to be placed in front of the school.

* * *

"I THINK that's pretty stinky," remarked Schaumburg Pres. Ray Kessell when advised members of The Herald staff are being recruited to play on a celebrity team at next weekend's Spring Valley Sports Weekend.

The celebrity team will pit professional athletes and radio and television personalities against The Spring Valley Stinkers, a group of local officials and civic leaders headed by Kessell and Sen. David A. Regner, R-Mount Prospect.

The benefit, sponsored by Chicago Health and Tennis Club, is expected to produce at least \$1,000 for Schaumburg's proposed Spring Valley Nature Sanctuary.

* * *

WATCH FOR the June 1 opening in Schaumburg of stock and bond brokers Blunt, Ellis and Simmons.

Hit by MS, he fights for rights of the handicapped

Today

Mike
Klein's
people



Ten years ago, the world trailed on a kite string behind fast running, hard charging Pete Smith. "We had everything going for us," he remembered this week.

There was so much that had gone well . . . Pete's flourishing career, a good wife, Rosemary, and four children, their home in Milwaukee and Pete's interest in making a solid contribution to people.

All that might have changed.

PETE THINKS THE symptoms came earlier than he first knew. "I just didn't recognize it, shrugged it off, worked around it," he said.

But one day, Pete could not play volleyball. "I discovered that I couldn't run or hit the ball," he said.

Pete had multiple sclerosis. He was confined to a wheelchair three years later.

Pete will never escape the paralysis which has made his legs dead weight in the wheelchair. That much about Pete Smith is different from 10 years ago.

BUT NOTHING ELSE. That wheelchair has not strapped him down. It has not been six horrible years for Pete Smith.

The still flourishing career is with Novo Airfreight of Elk Grove Village, where Pete has been a top salesman for nine years.

He recently completed a two-year term as president of the Hoffman Estates (H.S.) Loyal Parents. The Jaycees made Pete a lifetime member.

That's only the start. Four years ago, Pete complained to a woman about provisions for handicapped persons. She challenged him, "Then why don't you do something?"

HIS PILOT LIGHT was it. Pete got busy. Today, he has served almost four years as a member of the Governor's Commission on Employment of the Handicapped.

He's advanced to Cook County regional coordinator for suburban

(Continued on Page 10)

Crippler can't stop Pete Smith

MS victim—a handicapped fighter

(Continued from Page 1)

areas. "Ombudsman for the handicapped." That's what Pete called his job.

But Pete complained that not enough persons know he's there, ready to work with local organizations. "That's why I'm so glad to have the media," he said.

He never quit living after MS. "Al-ways look for different worlds to conquer," Pete admonished. "It's better to stay busy, not just for medical reasons or peace of mind, but because I want to be busy."

OTHERS HAVE NOT been so fortunate. Pete said there are 11 million disabled Americans who could work. But only four million are employed.

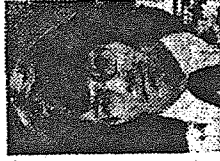
The remainder cannot find jobs. Or they have no way to get to work. Stories are as varied as the people. But they're nearly all on relief. That bothers Pete.

"I can't believe anyone enjoys being on public aid," said Pete. "There's pride in bringing home a paycheck and knowing that by the sweat of your brow, you made it."

"It goes back to the adage of early America," he said. "If you don't work, then you don't eat. That pride is there in many of the handicapped."

Today

Mike Klein's people



joy the American Dream, the right to work."

Pete Smith is more fortunate than some handicapped Americans. He came south from Milwaukee, already afflicted with multiple sclerosis.

Novo Airfreight hired Pete Smith for his talents as a salesman. "They had a great deal of faith that I could produce, if by nothing other than the telephone," said Pete. "We've been able to achieve that."

Pete would have the same chance exist for every handicapped person, that right to work.

"I am a living person. I am not to be laughed at," Pete said in support of all disabled Americans. "I am not to be taken for granted."



PETE SMITH

LAST WEEKEND, Pete attended the annual meeting of The President's Committee on Employment of the Handicapped, a conference in Washington, D.C.

President Gerald R. Ford also was scheduled to attend but chose to campaign in Texas.

The 2,000 conventioners were not pleased at being snubbed by Ford, who apparently sent invitations to everyone but himself.

They also were concerned about being overlooked in modern America.

"There's a great feeling of militancy among the handicapped," said Pete. "We're not asking for a handout."

"WE'RE CITIZENS of this country like anybody else. It's our right to en-

Area Jaycees Win Honor

The U.S. Jaycees have announced at the annual state convention held in Springfield this year that the Hoffman Estates Jaycees have been awarded two second place certificates for projects sponsored during the year.

In the state-wide competition, there were more than 350 entries by other local Jaycee chapters. It has been seldom that any one chapter would win two awards for two different projects in the same year.

The first project which won second place was in the Government Involvement category for the Hoffman Estates Jaycees local project "RAMP". This project concerned the writing and getting passed of a local

ordinance which required all new construction of public buildings to conform with certain standards for accessibility by invalids.

These standards include such items as ramps and extra wide doors which can be opened with a minimum of effort by handicapped individuals. There are also many internal construction features such as extra-wide corridors to increase the mobility of persons confined to wheelchairs.

The new Hoffman Estates village hall is an example of the type of construction necessary for increasing the mobility of handicapped persons.

The local project was run by

Peter Smith, a member of the Hoffman Estates Jaycees for over five years. He also brought and promoted this project to the attention of the state organization of the U.S. Jaycees and it was chosen as a state-wide project for other Jaycee chapters to run in their communities.

There have been many other communities which have passed ordinances patterned after the one adopted by the village of Hoffman Estates because of the effort made by Smith. It has also received recognition from the state governors office and its program called "Breakthru."

The other project which won a second place award, was in the

category of Human Relations and was called the Rapid City South Dakota Flood Relief Project.

This project was chaired by Bob Brenner, a member of the Hoffman Estates Jaycees for three years.

The outstanding feature of this project was that it was the first time that emergency measures from one Jaycee chapter to another in a different state could be set into motion. The funds and relief items obtained went directly to the Jaycees in Rapid City for distribution to local residents in need.

Both projects generated great enthusiasm and concern within the community of Hoffman Estates.

Y'all come, park district says

Handicap center opens Friday

Now all the Hoffman Estates Park District can do is wait to see how many handicapped persons turn out.

It was five months ago that the district's special recreation committee proposed the idea of a drop-in center for physically handicapped adults.

It would be a place for handicapped persons from throughout the Northwest suburbs to meet once a month to socialize.

THE DISTRICT'S main recreational facility, the Vogeled Barn, has been modified slightly to make it accessible to the handicapped. The washroom doors were adjusted; a ramp for wheel chairs has been installed.

The Northwest Special Recreation Assn., a cooperative of 13 area park districts, mailed fliers to hospitals

and special groups such as United Cerebral Palsy and the Multiple Sclerosis Society.

And to get people out to the first session, the committee decided it would need some added incentives.

Committee member Peter Smith, himself confined to a wheel chair, plans to teach disco dancing. Bruce Karr, coach of the Chicago Sidewinders wheel chair basketball aquad, was invited to teach ping pong.

The date has been set: 8 to 11 p.m. Friday at the Vogeled Barn, 650 W. Higgins Rd.

EDWARD HAAG, recreation superintendent, is waiting to see whether the handicapped will respond to the opportunity. He says he has no idea how many persons from outside Hoff-

man Estates will attend; he has no idea, he says, how many persons will attend at all.

"We know there're people out there," he says. "It's just difficult reaching them at times."

The center is geared toward reaching handicapped persons who otherwise have few social contacts, Smith says, but such persons are difficult to find because they have little social contact.

"We want to provide them a chance to get out of their homes into a social setting," Haag says. "It gives them a central location where they know they can get together and hopefully organize an active club."

"They don't have a place to go to meet each other, one on one."

BUT THE CENTER is going to be used for much more, he adds. Programming for handicapped individuals is just beginning to take shape in the Northwest suburbs, due mainly to a new special recreation tax permitted by the state.

In addition to designing the overall structure for the drop-in center, participants will be asked for suggestions on other programs, Haag says.

There is no charge for the drop-in center. Haag suggests persons with transportation problems contact the special recreation association at 394-4948 or 394-4910. The get-togethers for persons age 16 and older will revolve around informal conversation, cards and table games in addition to the special events.



STATE OF ILLINOIS
OFFICE OF THE GOVERNOR
SPRINGFIELD 62706

JAMES R. THOMPSON
GOVERNOR

July 19, 1977

Mr. Peter Smith (Region 2C)
402 Kingsdale
Hoffman Estates, Illinois 60172

Dear Mr. Smith:

Thank you for serving on the Governor's Committee on the Handicapped. The work you did on behalf of the handicapped citizens of our State is greatly appreciated. The committee represents state government's ongoing concern for the handicapped of Illinois.

I have reviewed the Transition Task Force Report which you have presented to me. I agree with many of your recommendations, and to that extent have appointed a Technical Advisory Committee to examine the effectiveness of all state services delivered to the handicapped. This committee will also hold state wide public hearings which will provide all handicapped citizens the opportunity to participate in the decision making process.

I believe that through cooperation and citizen involvement, we can develop an overall state policy which will insure that handicapped individuals can lead healthy and productive lives.

Sincerely,

A handwritten signature in dark ink, appearing to read "James R. Thompson", written over a large, stylized circular flourish.

James R. Thompson
GOVERNOR

JRT:mf

PETER M. SMITH

20 YEARS OF SERVICE TO HIS COMMUNITY

**MEMBER OF HOFFMAN ESTATES COMMISSION ON
SENIORS AND DISABLED**

**PAST MEMBER OF HOFFMAN ESTATES ZONING
BOARD**

**MEMBER OF THE BOARD OF
ILLINOIS INDEPENDENT LIVING**

**PAST PRESIDENT OF
HOFFMAN ESTATES LOYAL PARENTS**

**MEMBER OF THE GOVERNORS COMMITTEE FOR THE
HANDICAP**

LIFE MEMBER OF HOFFMAN ESTATES J.C.'s.

**ELECT PETE SMITH
FOR
PARK COMMISSIONER**

FOR A KINDER AND GENTLER PARK BOARD

PAID FOR BY CITIZENS TO ELECT PETE M. SMITH

Forest soccer?

Hoffman Estates park board candidate Peter M. Smith is recommending the park district explore the possibility of using Cook County Forest Preserve property to accommodate some games in the district's popular soccer program.

Park officials have sent an inquiry to forest preserve officials. Smith said using the land would "greatly eliminate the parking problem that will definitely happen if the soccer program is forced to use the neighborhood parks."

BRIEFS

HOFFMAN ESTATES

Soccer field response

A Hoffman Estates park board candidate's proposal to use Cook County Forest Preserve land for soccer fields is getting a mixed response from forest preserve and park officials. Park board hopeful Peter M. Smith, a former member of the Hoffman Estates zoning board of appeals, is proposing using forest preserves in the village to accommodate the park district soccer program.

Neighbor/Classified

**Hoffman Estates
Schaumburg**

SECTION

5

Candidate: Move soccer program to parks

BY STEVE GORECKI
Daily Herald Staff Writer

A Hoffman Estates park board candidate's proposal to use Cook County Forest Preserve land for soccer fields is getting a mixed response from forest preserve and park officials.

Park board hopeful Peter M. Smith, a former member of the Hoffman Estates zoning board of appeals, is proposing to use forest preserves in the village to accommodate the park district soccer program.

The park and forest preserve district are considering the plan but have several concerns.

Smith made his recommendation in the wake of plans by Unocal Corp. to build a huge mall and office buildings on property it owns northeast of Golf and Meacham roads — land now used for soccer games.

Development of the Unocal land would displace the park soccer program, which through a unique agreement with the oil firm has been playing all its games at the site for sev-

Lichner wrote that forest preserve facilities can be used by soccer leagues if requirements regarding liability insurance and a maintenance agreement are met.

Parks Executive Director Edward B. Haag said the park district likely would have no problems accepting responsibility for liability insurance but does have other concerns about the proposal, namely parking capacity and turf condition.

"Will the parking lot be large enough? Will the turf be leveled and safe enough for competitive soccer play?" Haag said.

The park district needs access to soccer fields for 18 Sundays annually, nine during the spring and nine during the fall, Haag said.

"We'll look into it but we want to

ELECTION '89

X

Race for

park board

eral years.

The forest preserve idea, Smith said, would eliminate parking problems likely to occur if soccer games are transferred to neighborhood parks.

The forest preserve district appears willing to consider the request and suggests possible use of a large preserve it is now developing with picnic areas, play fields and a parking lot on the north side of Central Road between Huntington Boulevard and Ela Road.

"This area will have ample space for sports such as soccer, cross country and baseball," wrote forest preserve Operations Superintendent Anton Lichner in response to Smith's query.

make sure the safety concerns are considered," Haag said.

If the forest preserve idea is not feasible, Haag said, the park district's recently revised comprehensive plan already has alternative park sites earmarked for soccer games should Unocal begin development.

Parks slated for soccer fields include High Point, Cottonwood, Vogel and Victoria.

But Smith does not like that idea. "I certainly feel using the forest preserve land is the only alternative that is reasonable and proper to pursue," Smith said. "Putting it into the neighborhood parks is a disaster waiting to happen. Parking would be a big problem."

STATE OF ILLINOIS, } ss.
COOK COUNTY

To All Whom It May Concern:

I, STANLEY T. KUSPER, JR., County Clerk of the County of Cook, in the State aforesaid,
Do hereby Certify, that, on the 4TH day of APRIL, A. D. 19 89,

PETER M. SMITH, was duly

ELECTED PARK COMMISSIONER

HOFFMAN ESTATES PARK DISTRICT

FOR A TERM OF FOUR YEARS

all of which appears from the records and files of my office.

In Witness Whereof, I have hereunto set my hand and affixed
the Seal of said County, this 1ST day of

MAY A. D. 19 89:

Stanley T. Kusper, Jr.

COUNTY CLERK

Canvasses confirm village, park election results

By STEVE GORECKI
Daily Herald Staff Writer

Virginia M. Hayter may have run unopposed for Hoffman Estates village clerk, but the official canvass of election results shows familiar nemesis Betty J. Gloyd got one write-in vote — which didn't count.

Election results for the Hoffman Estates village and park board races were made official with canvasses that indicated no changes from the unofficial election night numbers.

Village Clerk Anne S. von Sothen said the canvass of all 39 Hoffman Estates precincts confirmed that 4,749 voters cast ballots in the April 4 election. That is 643 votes less than the 5,392 ballots cast in the heated 1985 mayoral race won by Gloyd

over then-incumbent Hayter.

The canvass also confirmed that Village President-elect Michael J. O'Malley outpolled Trustee Richard A. Cochran by a vote of 3,110 to 1,495 to become Gloyd's successor, beginning May 1.

Hayter, who ran unopposed for the first time in more than 20 years in politics, was the top vote-getter with 3,779 votes.

But Gloyd managed to get a write-in vote for clerk from Precinct 4, a Schaumburg Township precinct that includes the Parcel C area of the village. The same precinct also produced a write-in vote for clerk for Minnie Manthei, an employee in the clerk's office.

Neither write-in vote counts since neither individual had declared

write-in candidacies prior to the election.

The official results in the race for three four-year village trustee seats show the top vote-getter there was incumbent Bruce C. Lind with 3,214 followed by incumbent Susan H. Kenley with 3,085 and zoning board member Louis G. Desruisseaux with 2,703. Finishing out of the running were zoning board member Warren J. Wiwat with 1,624 votes and Republican-backed Joseph R. Kretz with 1,366 votes.

Swearing in ceremonies for O'Malley, Lind, Kenley, Desruisseaux and Hayter are scheduled for 7:30 p.m. April 29. The ceremonies tentatively are set to take place at the Greenspoint office building at Barrington and Higgins roads.

The canvass of the 42 precincts in the park board race for four four-year seats shows incumbent Eugene R. Killian the top vote-getter with 2,209.

Following Killian were incumbents Charles L. Lehr with 2,063 votes and Stephen Johnson with 2,061 and newcomer Peter M. Smith with 1,968.

Out of the running were Steve Ostermann with 1,799 votes and incumbent David Schechtman with 1,764 votes.

But both Ostermann and Schechtman said they plan to apply for a vacancy on the park board created by the move from Hoffman Estates of former Commissioner Thomas R. Street. The park board is expected to fill the vacancy by the end of May.

Michael J. O'MALLEY
Clerk
MENA M. HAYTER
Manager
T. BURCHARD

HOFFMAN

H

E

ESTATES

Board of Trustees
BRUCE C. LIND
WILLIAM D. McLEOD
SUSAN H. KENLEY
MICHAEL D. FRIESEN
RICHARD A. COCHRAN
LOUIS G. DESRUISSEAUX

May 5, 1989

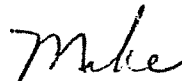
Mr. Peter Smith
1575 Kingsdale Road
Hoffman Estates, IL 60195

Dear Pete:

Your service to the Commission for Seniors and Disabled has helped maintain it as a successful, thriving entity in our Village. Your contributions have provided our Village with a source of great pride.

Now as you move onward and into other endeavors, Pete, you have left a part of yourself here, and we are very grateful. Good luck and God bless you in all your future endeavors.

Sincerely,



Michael J. O'Malley
Mayor

/lks
cc: Michael Friesen
Gerry Bartnicke
Karen Beyer
Mary Ann Kolodziej
Loraine Diven

Peter M. Smith
1575 N. Kingsdale Road
Hoffman Estates, IL., 60194
February 9, 1989

Mr. Arthur Janura
General Superintendant
Cook County Forest Preserve District
536 N. Harlem Avenue
River Forest, IL., 60305

Dear Art:

I am a candidate for the Hoffman Estates Park Board. Please do not accept ~~this~~ as an official request from the Hoffman Estates Park District but only ~~as~~ a thought from a concerned citizen.

~~We~~ have an outstanding soccer program that is servicing over one thousand ~~many~~ people, both boys and girls. This program takes place on the soccer ~~fields~~ on the Unocal property at Golf and Meacham roads. Unocal is going to ~~begin~~ developing their property and the soccer program must find a new home.

~~If the~~ liability question which you raised during our telephone conversation ~~can~~ be resolved to your complete satisfaction, will the Forest Preserve ~~district~~ please consider allowing this excellent program to use space in any ~~of the~~ groves surrounding Hoffman Estates.

~~If you~~ think the Forest Preserve District will be able to assist the Park ~~district~~ in the above regard, please let me know and I will introduce this ~~as a~~ possible alternative for the Park District.

Sincerely, yours,


Peter M. Smith

HOFFMAN ESTATES PARK DISTRICT

1685 W. HIGGINS, HOFFMAN ESTATES, IL. 60195-2992 • TEL. 885-7500

February 15, 1989

Mr. Arthur Janura
General Superintendent
Cook County Forest Preserve District
536 N. Harlem Avenue
River Forest, Ill. 60305

Dear Mr. Janura:

In response to Mr. Peter M. Smith's letter dated February 9, 1989, requesting the Forest Preserve District's assistance in securing soccer fields for the Hoffman Estates Park District, I would like to advise you more completely of our needs in this regard.

As Pete Smith mentioned, we do have a very strong program serving approximately 1,000 to 1,300 children and young adults of our community who participate in our soccer program. The space that we are presently using is at Unocal on Sundays. That property comprises approximately 15 acres, on which we set up eleven soccer fields adjacent to each other. The question of liability insurance would be of prime concern to our risk management association as it would be to the Forest Preserve District.

Of additional concern, is that the area needed has to accommodate twelve soccer fields adjacent to each other. We would need to have those fields available all day every Sunday beginning in late April to the end of June and again in September through the first week in November. In addition we would need them for several weekends in July for special tournaments.

In checking with your permit department they advised me that virtually all the groves have been reserved through permits for the upcoming year for the dates mentioned, and that under no circumstances would that type of space be presently available. Another concern we would like you to consider is the quality of turf on any property you may have available. The caliber of turf in the forest preserve while generally acceptable for informal activities, I am not sure that it would constitute the caliber of turf necessary to play competitive organized soccer without the likelihood of injury. If you have an area available, but in need of turf upgrading, perhaps we could explore a joint effort to upgrade it in exchange for our use.

Please take these points into consideration when you respond to Mr. Smith, and by all means if there is any area available as I have outlined, I would be more than happy to sit down with the Forest Preserve District and work out any permit details in the event that we lose the use of the Unocal property.

Obviously, it would be to our advantage to keep our playing in one location on one day like it is held now, as opposed to our bringing it into our own park system and

BLACKHAWK COMMUNITY &
FITNESS CENTER
1685 W. Higgins
Hoffman Estates, Il. 60195
(312) 885-7500

WILLOW RECREATION CENTER &
RACQUET CLUB
3600 N. Lexington Dr.
Hoffman Estates, Il. 60195
(312) 359-9320

Page 2.

February 15, 1989

Arthur Janura

splitting the program up on a series of different days at a series of different parks within Hoffman Estates.

I hope this clarifies any questions you may have had with regard to Mr. Smith's letter and with regard to the total scope of this request. If you should have any questions or need any further information, I would be more than happy to discuss this with you.

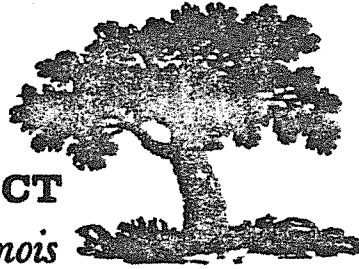
Sincerely,

Edward Haag
Executive Director

cc: Gene Killian, Park Board President
Peter M. Smith, 1575 N. Kingsdale Rd., Hoffman Estates, Il. 60194

rk

FOREST PRESERVE DISTRICT
of Cook County, Illinois



The Board of Commissioners

| | |
|-----------------------|-----------------|
| CHARLES R. BERNARDINI | IRENE C. HERMAN |
| JERRY BUTLER | ROSE-MARIE LOM |
| ALLAN C. CARR | JOSEPH D. VATE |
| FRANK A. DAMATO | MARY M. McDON |
| MARCO DOMICO | RICHARD A. SEE |
| GEORGE W. DUNNE | BOBBIE L. STEE |
| ROBERT P. GOOLEY | JOHN H. STROE |
| CARL R. HANSEN | HAROLD L. TYRE |
| | SAMUEL G. VAUG |

GEORGE W. DUNNE, PRESIDENT

GENERAL HEADQUARTERS: 536 NORTH HARLEM AVENUE, RIVER FOREST, ILLINOIS 60375
261-8400 / 366-9420

Arthur L. Janura, GENERAL SUPERINTENDENT

March 15, 1989

Peter M. Smith
1575 N. Kingsdale Road
Hoffman Estates, IL 60194

Dear Mr. Smith:

Your letter to Arthur L. Janura, General Superintendent, as a concerned citizen for the Hoffman Estates Park District Soccer Program has been forwarded to the Department of Maintenance & Operations for reply.

The Forest Preserve District does permit the use of its facilities for soccer play providing certain conditions are met.

In order to have a better understanding of your request, it is suggested you contact the undersigned for an appointment to discuss your request. A meeting with District staff members will clarify the District's position. Among other things, the District will require liability insurance and a maintenance agreement which will be discussed at our meeting.

The District is presently developing a large tract of land with picnic areas, playfields and a parking lot on the North side of Central Road between Freeman and Ela Roads. This area will have ample space for sports such as soccer, cross country, baseball and etc.

This office trusts this information is satisfactory and will be awaiting your call.

Very truly yours,

Anton Lichner
Supt. of Maintenance & Operations

AL/bh

cc: Arthur L. Janura

HOFFMAN ESTATES PARK DISTRICT

1685 W. HIGGINS, HOFFMAN ESTATES, IL. 60195-2998 • (312) 885-7500

July 19, 1989

Mr. Arthur Janura, General Superintendent
Cook County Forest Preserve District
536 N. Harlem Avenue
River Forest, IL 60305

Dear Mr. Janura,

I am writing on behalf of the Hoffman Estates Park District Board of Commissioners to request your assistance in a joint project to develop a portion of the Paul Douglas Preserve for soccer play.

Our in-house soccer program, comprised of approximately 1,500 players, currently plays its games on the grounds of Unocal in Schaumburg. In the near future that property will be sold and developed, necessitating our relocation to another site.

We have walked the 40 acres at the Paul Douglas Preserve just to the west of the existing parking lot and determined that, with some regrading, all 10 of our fields will fit. The turf does need extensive top dressing and seeding to be playable for soccer.

Our other major concern is parking space. On a Sunday at Unocal we use as many as 500 parking spaces. We average 300 cars for a single set of games.

Basically, we are proposing that the Hoffman Estates Park District would develop that portion of the Paul Douglas Preserve for soccer play. We would grade, topdress, seed and establish turf at an estimated cost to us of \$28,000. In return, we would request your assistance in helping with the parking situation. We would also request some type of long term use permit for Saturday and Sunday games and two or three weeknights of practice. On the other days the fields would be available for use by the general public.

We would indemnify and hold harmless the Cook County Forest Preserve District and provide liability insurance coverage in the amount of 3 million dollars per occurrence. We would propose to start the turf work as soon as possible with the hope of having the fields ready for play in the fall of 1990. Once the turf is established, the issue of who would maintain it remains open for discussion.

BLACKHAWK COMMUNITY &
FITNESS CENTER
1685 W. Higgins
Hoffman Estates, IL. 60195
(312) 885-7500

WILLOW RECREATION CENTER &
RACQUET CLUB
3600 N. Lexington Dr.
Hoffman Estates, IL. 60195
(312) 359-9320

I would respectfully suggest that this would be a good project for the Cook County Forest Preserve District to consider for several reasons. Not only would the preserve be developed as an open athletic area, but there would also be a tremendous opportunity for positive public relations. Our teams are comprised of close to 2,000 boys and girls, men and women from ages 4 to 54. Our travel team plays home games against as many as 3,000 other players from 40 different communities throughout the Chicago area. Our two annual travel tournaments involve close to 150 teams from a dozen states and even, on occasion, Canada and Europe. The public relations exposure -- by word of mouth, in all the printed literature, and in the media -- would be invaluable to the forest preserve district in publicizing the worth of what they are doing. Also, the taxpayers are becoming more and more appreciative of the benefits of intergovernmental cooperation.

Thank you for your consideration. Also, thanks are due Anton Lichner and Joe Nevius for the time they spent with our staff in discussing this matter.

Sincerely,

Michael Beers
President, Park Board of Commissioners

cc: Park Board
Edward Haag

jw

Northwest briefing

Condos give disabled their independence

■ **Palatine:** Finding affordable housing is a challenge for many people and almost an impossibility for the physically handicapped.

Living life in a wheelchair often causes problems when standard doorways and hallways are not wide enough to navigate. But Peter Smith, a 56-year-old Hoffman Estates resident with multiple sclerosis, said that he believes he has found an answer to the access problem that is putting a financial strain on disabled individuals.

"A lot of the new homes that are being built are accessible, but a lot of disabled can't afford [to buy] them because they're on disability," he said.

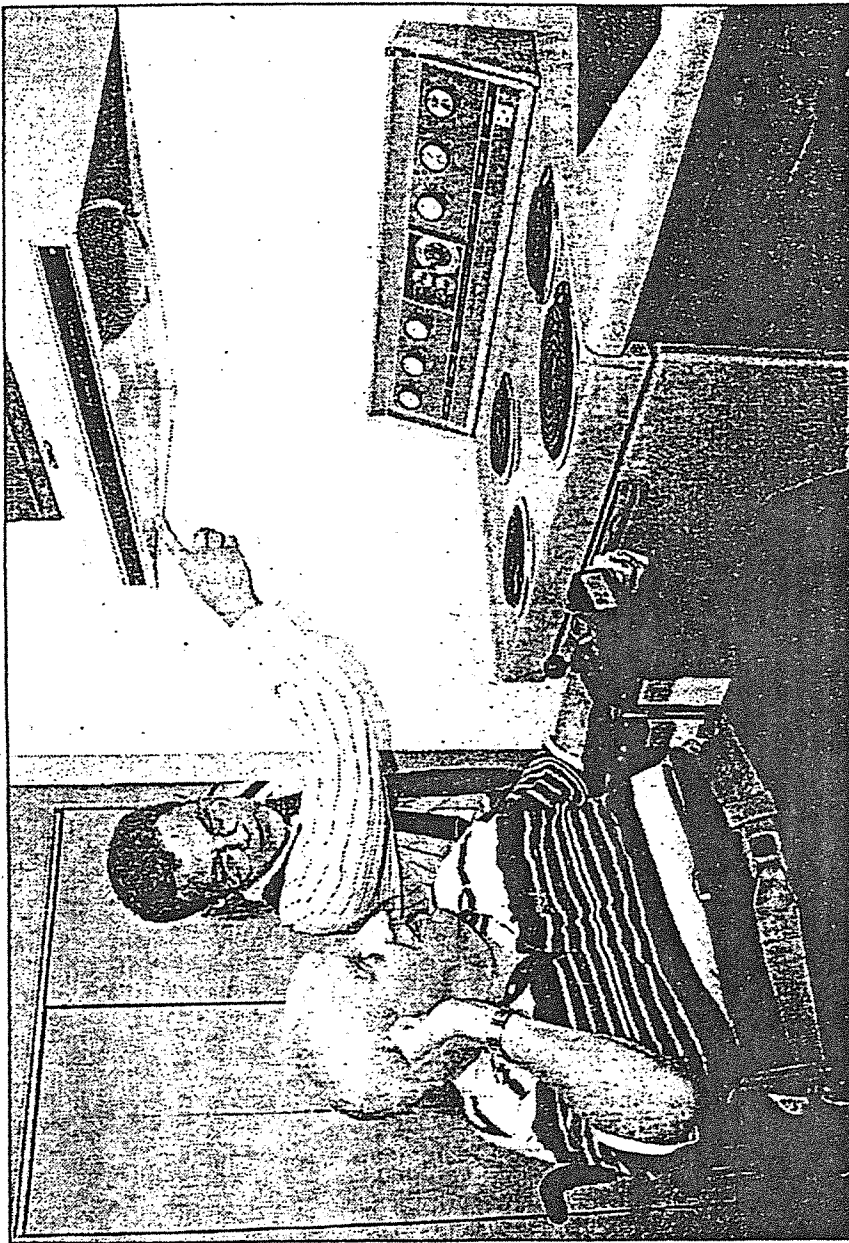
As president of the Northwest Independent Living Group founded last year, Smith and a team of architects, attorneys, contractors and administrative staff have purchased six condominium units at One Renaissance Place, a 17-year-old high-rise in Palatine, with the assistance of Cook County, First Chicago Bank and donations from the community.

The condos will be completely renovated within the next few months to accommodate wheelchair-using individuals who can remain independent in their new surroundings after a few special adjustments have been made.

"Specifically, we're going to widen every doorway to 3 feet, and we're going to rip out the bathtubs and install roll-in showers that will be large enough for a wheelchair," said contractor Todd Young of The Young Cos.

In addition, kitchen cabinets will be lowered, kitchen sinks will be open underneath and raised or lowered and side-by-side refrigerators will be installed for easy access.

All the adjustments, which are expected to cost



Tribune photo by H.T. Vu

Contractor Todd Young tells Peter Smith how kitchen appliances will be adapted.

\$300,000, will make life a lot easier for the disabled residents, although a paid staff of attendants will be available to help with more difficult tasks.

The 800- to 1,000-square-foot units will be offered to low-income, physically handicapped but mentally able applicants.

"What we're trying to do is make our folks taxpayers instead of tax-takers and make them con-

Stefanie Cascio

Nonprofit Takes Initiative

RTC and HUD Link To Serve Disabled

From his wheelchair Peter Smith pulls no punches. "We do not want to be just in a warehouse waiting to pass on," Smith told the RTC Oversight Board's regional advisory meeting in Chicago on April 29, 1993. The Northwest Independent Living Group, Inc., founded this year by Smith, its president, closed sale August 24, 1993, on six RTC units in a 13-story complex of 272 units in Palatine, IL, a northwest suburb of the Windy City. Six physically disabled tenants are the beneficiaries.

This is at least the third time RTC under its affordable housing program has sold apartment units to a nonprofit organization dedicated to integrated living for the disabled with the help of the Robert Johnson Wood Foundation, the Austin (TX) Travis County Mental Health and Mental Retardation Center bought two RTC multifamily properties totaling 46 units and a duplex for \$164,000 to provide integrated living for the mentally ill. In 1991, the Atlanta Community in Denver, CO, purchased the 31 unit New Heritage apartments,

spending \$400,000 to retrofit and rehab the building for disabled tenants. With its inaugural project, Northwest Independent Living will be doing the same with the Palatine units, which cost \$225,000 (76 percent of appraised value), by adding \$90,000 in rehabilitation for such things as larger doors, lower sinks and counters, and roll-in showers. Forty-eight percent of the acquisition, rehab, and "soft" costs (\$165,000) was made possible by a grant from the HUD HOME program, dispersed through Cook County; 52 percent of costs were covered by a conventional loan by First Chicago Bank, Mt. Prospect branch (\$180,000).

In-kind donations or discounts for appliances have helped defray rehab expenses. The Balspar Corporation, in addition to donating all paint products, put Northwest Independent Living on its employees' charitable donation list. Smith persuaded a local contractor, The Young Companies, to work at cost. In such a way, Smith told the Oversight Board, costs could be brought under Cook

County's \$45,000 limit per unit for its HOME program. In addition to the building itself, Northwest Independent Living is bringing in affordable attendant services for the disabled tenants. Smith believes integrated living with those who are "well" is the wave of the future. One in every five people in the United States has some disability, and over 300,000 suffer from permanent paralysis due to spinal cord or brain injuries. Yet only \$1 billion of the \$200 billion spent on the disabled's health care goes to moving them into the mainstream of society.

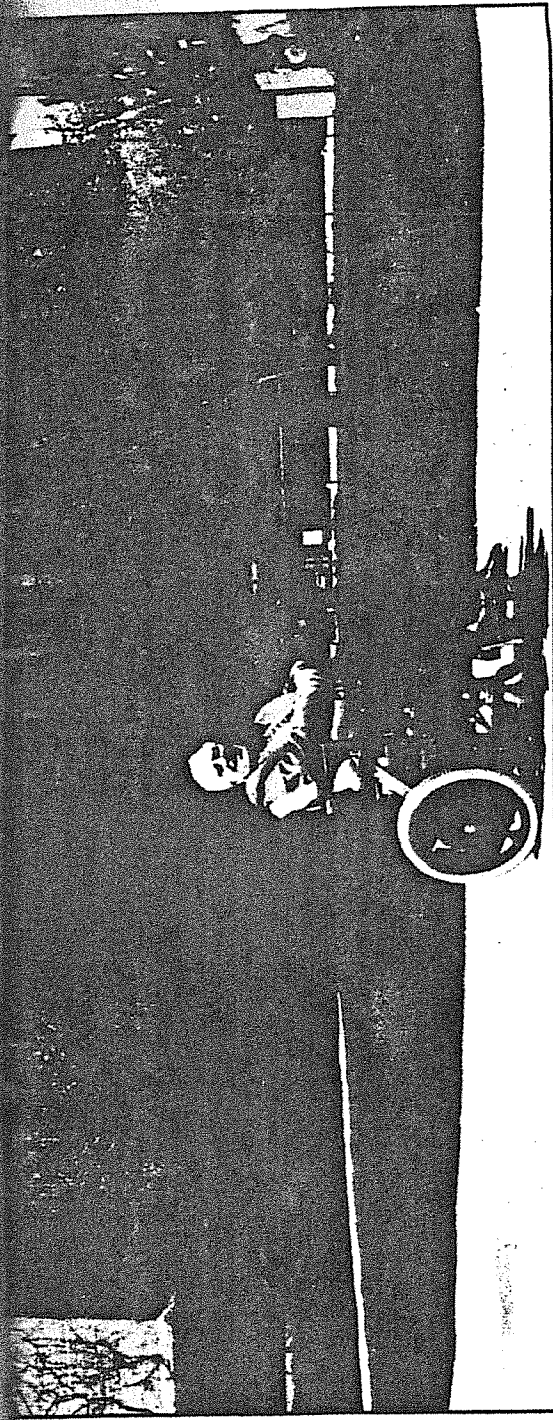
According to Wendy Weiser, Northwest Independent's executive director, working with potential tenants at the Palatine property is "both uplifting and heartbreaking, because there are so many disabled people who want such a place to live and we only have six units. No one wants to live in a wheelchair ghetto, but the world is an able-bodied world. To the lucky ones who get the units, it gives them a life they didn't have

before--literally more hours in the day. There are health care cost savings involved, as well, with attendants on the property." Northwest Independent Living would like to see up to 5 percent of apartment building units retrofitted for the disabled.

Cook County saw the project as a breakthrough--the first time it used its HOME funds for disabled housing. Suzanne Hayes, assistant planning and development director for the Cook County Planning and Development Department, credits Peter Smith with "the drive and determination to do it." Hayes said, "We thought this was a really great opportunity to meet the need and participate with RTC, HUD and the private lender to help the disabled feel more a part of the community."

Kris Van Dort, real estate specialist with Verex (the SAMDA contractor for the property) noted, "We didn't even need a realtor--it was a very expeditious project with an articulate and well-run nonprofit."

Rarin' to go: Peter Smith, president of the Northwest Independent Living Group, Inc., in front of the Palatine, IL, complex where his nonprofit bought six RTC units for disabled tenants.



SMITH

Peter M. Smith Jr., 58, of Palatine, formerly of Hoffman Estates for 28 years, beloved husband of Rosemary S., nee Verdoni; father of Donna (John) Kelly, Robert (Dianne), Susan (Tim) O'Sullivan and Patrick (Bridget); grandfather of Britney, Megan, Ryan, Rachael, Patrick, Taylor and Claire; brother of the late Alfred. Visitation at Ahlgrim & Sons Funeral Home, 330 W. Golf Rd., Schaumburg, from 2 to 9 p.m. Friday. Funeral Saturday 9 a.m. to St. Hubert Church, Mass 9:30 a.m. Interment St. Michael Cemetery. Memorials will be appreciated to the Multiple Sclerosis Society. Info. 708-882-5580.

Daily Herald Thursday, August 3, 1995

Peter M. Smith Jr.

Prayers for Peter M. Smith Jr., 58, of Palatine, and formerly a resident of Hoffman Estates for 28 years, will be said at 9 a.m. on Saturday, Aug. 5 at Ahlgrim & Sons Funeral Home, 330 W. Golf Road, Schaumburg. Mass will follow at 9:30 a.m. at St. Hubert Church, 729 Grand Canyon Pkwy., Hoffman Estates.

He was born Oct. 8, 1936, in Chicago.

Burial will be in St. Michael the Archangel Cemetery, Palatine. He died Wednesday, Aug. 2 in Elk Grove Village.

Mr. Smith was a salesman in air freight.

He was an elected Hoffman Estates park commissioner, formerly of the Hoffman Estates Zoning Board, founder and president of the Northwest Independent Living Group and was instrumental in advancing the rights of the handicapped. He was also on the Presidents and Governors Committee of the employment of the handicapped.

Survivors include his wife Rosemary S. Smith (nee Verdoni); his sons Robert (Dianne) and Patrick (Bridget); his daughters Donna (John) Kelly and Susan (Tim) O'Sullivan, and his grandchildren Britney, Megan, Ryan, Rachael, Patrick, Taylor and Claire.

He was preceded in death by his brother Alfred.

Visitation will be from 2 to 9 p.m. Friday, Aug. 4 at the funeral home.

Memorials will be appreciated to the Multiple Sclerosis Society.

For information (708) 882-5580.

MEMORANDUM NO. M15-165

TO: Board of Commissioners
FROM: Dean R. Bostrom, Executive Director
RE: 2016 Calendar of Board/Committee Meetings
DATE: November 24, 2015

Background

In compliance with the Open Meetings Act, the park district is legally required at the beginning of each fiscal year to prepare and make available a schedule of its regular board meetings listing the times and places of such meetings. (See attached 2016 calendar).

Recommendation

Staff is recommending that the Board approve the 2016 Calendar of Board/Committee Meetings.

2016 HOFFMAN ESTATES PARK DISTRICT BOARD/COMMITTEE MEETINGS

| | | | |
|--------------------|----|--------------|-----------------------------------|
| <u>JAN</u> | 05 | --- | NO MEETING |
| | 12 | 7:00 p.m. | Recreation Committee |
| | 19 | 7:00 p.m. | Administration & Finance |
| | 26 | 7:00 p.m. | Board Meeting |
| <u>FEB</u> | 02 | 7:00 p.m. | Buildings & Grounds |
| | 09 | 7:00 p.m. | Recreation Committee |
| | 16 | 7:00 p.m. | Administration & Finance |
| | 23 | 7:00 p.m. | Board Meeting |
| <u>MAR</u> | 01 | 7:00 p.m. | Buildings & Grounds |
| | 08 | 7:00 p.m. | Recreation Committee |
| | 15 | 7:00 p.m. | Administration & Finance |
| | 22 | 7:00 p.m. | Board Meeting |
| | 29 | --- | NO MEETING – 5 th week |
| <u>APR</u> | 05 | 7:00 p.m. | Buildings & Grounds |
| | 12 | 7:00 p.m. | Recreation Committee |
| | 19 | 7:00 p.m. | Administration & Finance |
| | 26 | 7:00 p.m. | Board Meeting |
| <u>MAY</u> | 03 | 7:00 p.m. | Buildings & Grounds |
| | 10 | 7:00 p.m. | Recreation Committee |
| | 17 | 7:00 p.m. | Administration & Finance |
| | | Immed follow | ANNUAL MEETING |
| | 24 | 7:00 p.m. | Board Meeting |
| | 31 | --- | NO MEETING – 5 th week |
| <u>JUNE</u> | 07 | 7:00 p.m. | Buildings & Grounds |
| | 14 | 7:00 p.m. | Recreation Committee |
| | 21 | 7:00 p.m. | Administration & Finance |
| | 28 | 7:00 p.m. | Board Meeting |
| <u>JULY</u> | 05 | 7:00 p.m. | Buildings & Grounds |
| | 12 | 7:00 p.m. | Recreation Committee |
| | 19 | 7:00 p.m. | Administration & Finance |
| | 26 | 7:00 p.m. | Board Meeting |

| | | | |
|--------------------|----|--------------|---|
| <u>AUG</u> | 02 | 5:45 p.m. | Buildings & Grounds/PARK TOUR |
| | 09 | 7:00 p.m. | Recreation Committee |
| | 16 | 7:00 p.m. | Administration & Finance |
| | 23 | 7:00 p.m. | Board Meeting |
| | 30 | --- | NO MEETING – 5 th week |
| <u>SEPT</u> | 06 | 7:00 p.m. | Buildings & Grounds |
| | 13 | 7:00 p.m. | Recreation Committee |
| | 20 | 7:00 p.m. | Administration & Finance |
| | 27 | 7:00 p.m. | Board Meeting |
| <u>OCT</u> | 04 | 7:00 p.m. | Buildings & Grounds |
| | 11 | 7:00 p.m. | NO MEETING (holiday) |
| | 18 | 7:00 p.m. | Recreation Committee |
| | | Immed follow | Administration & Finance |
| | 25 | 7:00 p.m. | Board Meeting |
| <u>NOV</u> | 01 | 7:00 p.m. | Buildings & Grounds |
| | 08 | 7:00 p.m. | B&G/Rec/A&F Meeting - 2017 Budget |
| | | Immed follow | SPECIAL BOARD MTG - Approve B&A Ordinance in tentative form and Tax Levy amount |
| | 15 | 7:00 p.m. | Administration & Finance |
| | 22 | 7:00 p.m. | Board Meeting |
| | 29 | --- | NO MEETING – 5 th week |
| <u>DEC</u> | 06 | 6:45 p.m. | Public Mtg: B&A Ordinance |
| | | 7:00 p.m. | Buildings & Grounds |
| | 13 | 7:00 p.m. | Recreation Committee |
| | 20 | 7:00 p.m. | Administration & Finance-B&A and tax levy in final form |
| | | Immed follow | Board Meeting |
| | 27 | --- | NO MEETING (holiday) |