

- DEMOLITION KEYED NOTES**
- ◇ EXISTING DUCT MOUNTED SUPPLY GRILLES TO REMAIN SEE NEW WORK PLAN FOR NEW AIRFLOW REQUIREMENTS, TYPICAL.
 - ◇ EXISTING FLOOR MOUNTED SUPPLY GRILLES TO REMAIN SEE NEW WORK PLAN FOR NEW AIRFLOW REQUIREMENTS, TYPICAL.
 - ◇ EXISTING EXHAUST AND RETURN GRILLES TO REMAIN SEE NEW WORK PLAN FOR NEW AIRFLOWS, TYPICAL.
 - ◇ EXISTING SUPPLY AND RETURN RISERS UP TO ROOFTOP UNIT TO REMAIN FOR RECONNECTION TO NEW, SEE NEW WORK PLAN.
 - ◇ EXISTING BURIED DUCTWORK TO REMAIN.
 - ◇ REMOVE SECTION OF EXHAUST DUCT, CAP RISER TO EXISTING EXHAUST FAN, ASSOCIATED GRILLE TO REMAIN FOR RECONNECTION TO NEW, SEE NEW WORK PLAN, VERIFY EXACT SIZE AND LOCATION OF EXISTING DUCTWORK IN THE FIELD.

1 MECHANICAL FLOOR PLAN - DEMOLITION

SCALE: 1/8"=1'-0"

REVISIONS	DATE	BY
ISSUED FOR BIDS	02-15-16	

W-T MECHANICAL/ELECTRICAL ENGINEERING, LLC.
 MECHANICAL AND ELECTRICAL ENGINEERING
 2015 Prairie Avenue
 Chicago, IL 60607
 PH: (312) 328-3333 FAX: (312) 328-3444
 www.wte-engineering.com
 E. License No.: 062-048172 EXP. 04/30/16
 COPYRIGHT © 2016 W-T MECHANICAL/ELECTRICAL ENGINEERING, LLC.



**PRAIRIE STONE SPORTS & WELLNESS CENTER
 NATATORIUM HVAC UNITS REPLACEMENT
 HOFFMAN ESTATES, ILLINOIS**

SHEET TITLE:	MECHANICAL FLOOR PLAN - DEMOLITION
DATE:	02-15-2016
SCALE:	AS NOTED
DRAWN:	MOV, KJS
CHECK:	STT
JOB:	M15420
SHEET	MD-1

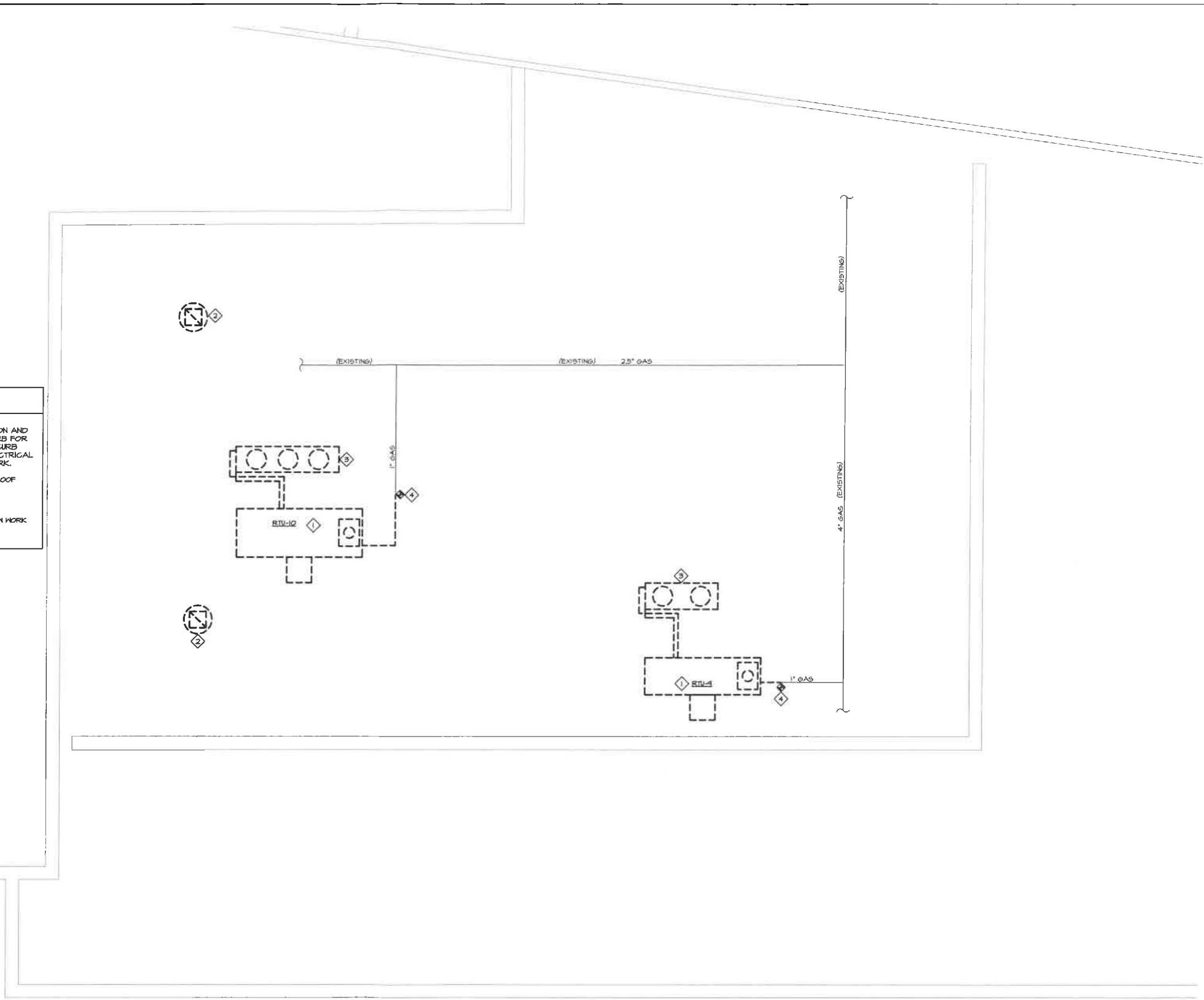
◇ DEMOLITION KEYED NOTES

◇ DISCONNECT EXISTING DUCTWORK, GAS AND ELECTRICAL CONNECTIONS FROM EXISTING ROOFTOP UNIT IN THIS LOCATION AND REMOVE EXISTING ROOFTOP UNIT. LEAVE EXISTING ROOF CURB FOR REUSE. INSTALL NEW ROOFTOP UNIT ON EXISTING CURB WITH CURB ADAPTER. RECONNECT DUCTWORK, GAS, CONTROLS AND ELECTRICAL CONNECTIONS. SEE ELECTRICAL PLANS FOR ELECTRICAL WORK.

◇ REMOVE EXISTING EXHAUST FAN AND PROVIDE INSULATED CAP ON ROOF CURB.

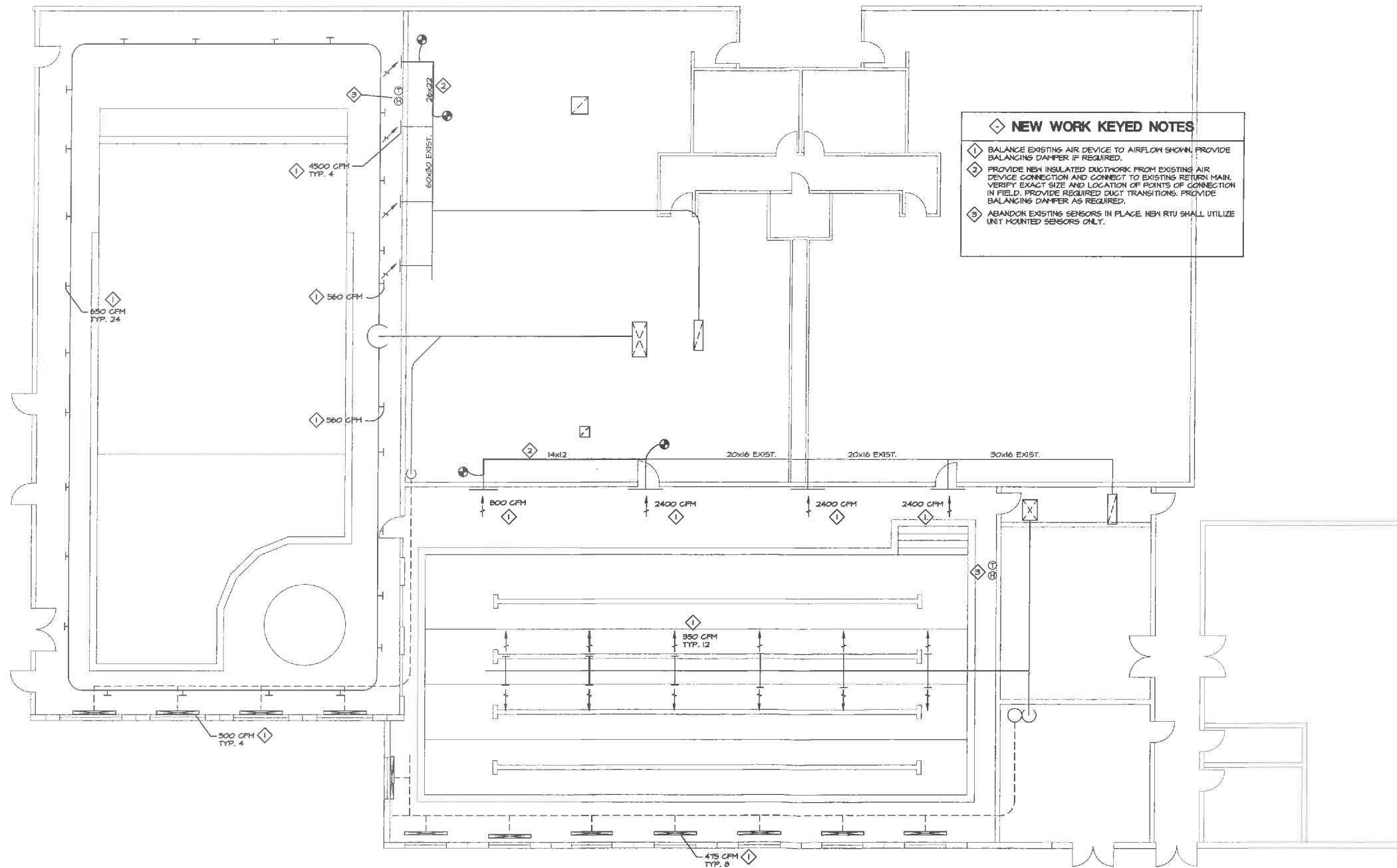
◇ REMOVE EXISTING AIR COOLED CONDENSER AND ALL ASSOCIATED REFRIGERANT PIPING.

◇ REMOVE EXISTING GAS PIPING TO UNIT TO LOCATION SHOWN. SEE NEW WORK PLAN FOR RECONNECTION OF GAS PIPING.



1 MECHANICAL ROOF PLAN - DEMOLITION
 SCALE: 1/8"=1'-0"

REVISIONS	DATE	BY
ISSUED FOR BIDS	02-15-16	
 W-T MECHANICAL/ELECTRICAL ENGINEERING, LLC. <small>MECHANICAL AND ELECTRICAL ENGINEERS</small> <small>11800 N. Elmhurst Avenue, Suite 40102</small> <small>Elmhurst, Illinois 60120</small> <small>PH: (708) 461-1100</small> <small>www.wtengr.com</small> <small>IL License No.: 162.000512 Exp. 04/30/19</small> <small>COPYRIGHT © 2016 W-T MECHANICAL/ELECTRICAL ENGINEERING, LLC.</small>		
W-T		
PRAIRIE STONE SPORTS & WELLNESS CENTER NATATORIUM HVAC UNITS REPLACEMENT HOFFMAN ESTATES, ILLINOIS		
SHEET TITLE: MECHANICAL ROOF PLAN - DEMOLITION		
DATE: 02-15-2016		
SCALE: AS NOTED		
DRAWN: MOV, KJS		
CHECK: STT		
JOB: M15420		
SHEET		
MD-2		



NEW WORK KEYED NOTES

- 1 BALANCE EXISTING AIR DEVICE TO AIRFLOW SHOWN. PROVIDE BALANCING DAMPER IF REQUIRED.
- 2 PROVIDE NEW INSULATED DUCTWORK FROM EXISTING AIR DEVICE CONNECTION AND CONNECT TO EXISTING RETURN MAIN. VERIFY EXACT SIZE AND LOCATION OF POINTS OF CONNECTION IN FIELD. PROVIDE REQUIRED DUCT TRANSITIONS. PROVIDE BALANCING DAMPER AS REQUIRED.
- 3 ABANDON EXISTING SENSORS IN PLACE. NEW RTU SHALL UTILIZE UNIT MOUNTED SENSORS ONLY.

1 MECHANICAL FLOOR PLAN - NEW WORK
SCALE: 1/8"=1'-0"

REVISIONS	DATE	BY
ISSUED FOR BIDS	02-15-16	

W-T MECHANICAL/ELECTRICAL ENGINEERING, LLC.
MECHANICAL AND ELECTRICAL
2815 Pruden Avenue
Naperville, IL 60563
PH: (630) 325-8333 FAX: (630) 325-8444
www.wtmechanical.com
E. License: 000000272 Exp. 12/31/18
COPYRIGHT © 2016 W-T MECHANICAL/ELECTRICAL ENGINEERING, LLC.



**PRAIRIE STONE SPORTS & WELLNESS CENTER
NATATORIUM HVAC UNITS REPLACEMENT
HOFFMAN ESTATES, ILLINOIS**

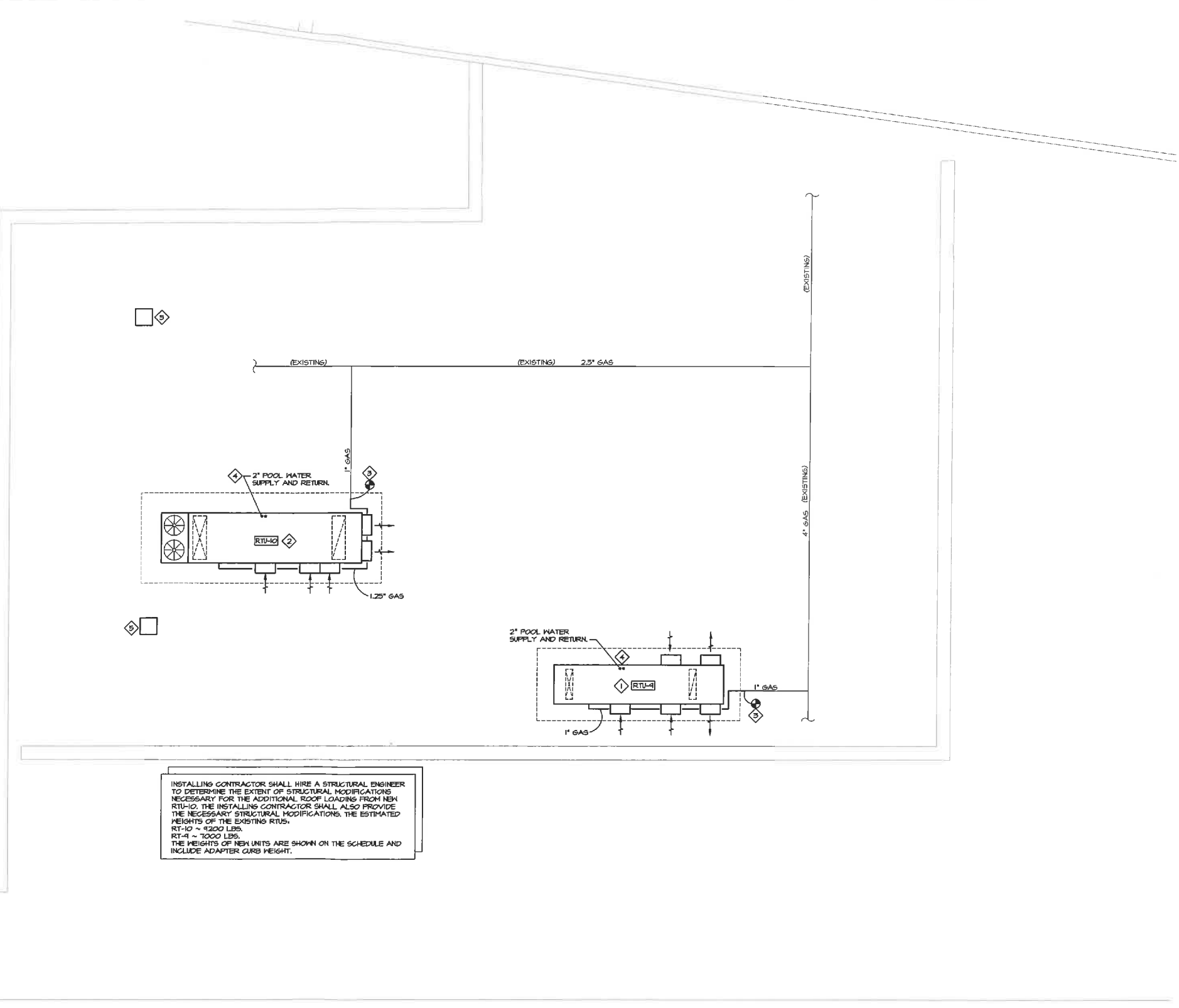
SHEET TITLE:
**MECHANICAL FLOOR
PLAN - NEW WORK**

DATE: 02-15-2016
SCALE: AS NOTED
DRAWN: MOV, KJS
CHECK: STT
JOB: M15420

SHEET
M-1

- NEW WORK KEYED NOTES**
1. INSTALL NEW RTU ON EXISTING CURB WITH CURB ADAPTER. ADAPTER CURB EQUAL TO THYCURB RETROMATE. TRANSITION FROM THE EXISTING DECTRON MODEL RS-100 RTU TO NEW RTU-4 CURB SHALL BE FULLY INSULATED WITH ALL APPLICABLE DUCT TRANSITIONS AND BLOCK OFF FANS. FIELD CUTTING OF THE SUPPLY AIR MAY BE NECESSARY.
 2. INSTALL NEW RTU ON EXISTING CURB WITH CURB ADAPTER. ADAPTER CURB EQUAL TO THYCURB RETROMATE. TRANSITION FROM THE EXISTING DECTRON MODEL RS-150 RTU TO NEW RTU-10 CURB SHALL BE FULLY INSULATED WITH ALL APPLICABLE DUCT TRANSITIONS AND BLOCK OFF FANS. FIELD CUTTING OF THE SUPPLY AIR MAY BE NECESSARY. PROVIDE NEW ADDITIONAL SUPPORT RAIL FOR NEW RTU. RAIL SHALL BE FLASHED INTO THE EXISTING ROOF BY ROOFING CONTRACTOR.
 3. PROVIDE NEW GAS PIPING FROM EXISTING BRANCH PIPE, AND CONNECT TO NEW RTU. PROVIDE PIPE SUPPORTS EQUAL TO COOPER B-LINE. VERIFY EXACT LOCATION AND SIZE OF EXISTING GAS PIPING IN FIELD.
 4. PROVIDE POOL WATER PIPING FROM EXISTING PIPING THRU ROOF. SIZE AS SHOWN. CONNECT TO NEW RTU PER HRR. RECOMMENDATIONS. PROVIDE BALL VALVES, UNIONS AND BALANCING VALVE. VERIFY EXACT LOCATION AND SIZE OF EXISTING POOL WATER STUDS THRU ROOF.
 5. CAPPED ROOF CURB FROM REMOVED EXHAUST FAN.

- MECHANICAL ROOF NOTES**
1. ALL ROOFTOP EQUIPMENT LOCATIONS SHALL BE COORDINATED WITH ROOF DRAINS.
 2. THE INSTALLING CONTRACTOR SHALL PROVIDE ROOF CURBS AND LEVELING CURBS TO MATCH THE ROOF PITCH IF REQUIRED. THE ROOFING CONTRACTOR SHALL FLASH ALL NEW CURBS INTO ROOF. THE ROOFING CONTRACTOR SHALL BE A SUB-CONTRACTOR TO THE INSTALLING CONTRACTOR.
 3. ALL VENTS AND EXHAUSTS SHALL BE LOCATED A MINIMUM OF 10'-0" FROM ANY FRESH AIR INTAKES PER LOCAL CODES.
 4. ALL ROOF FLASHING SHALL BE PERFORMED BY THE ROOFING CONTRACTOR.
 5. ALL NEW GAS PIPING EXPOSED TO THE OUTDOORS SHALL BE CLEANED AND PAINTED WITH BLACK EPOXY FOR CORROSION PROTECTION PER IMC 1303.21



INSTALLING CONTRACTOR SHALL HIRE A STRUCTURAL ENGINEER TO DETERMINE THE EXTENT OF STRUCTURAL MODIFICATIONS NECESSARY FOR THE ADDITIONAL ROOF LOADING FROM NEW RTU-10. THE INSTALLING CONTRACTOR SHALL ALSO PROVIDE THE NECESSARY STRUCTURAL MODIFICATIONS, THE ESTIMATED WEIGHTS OF THE EXISTING RTUS.
 RT-10 ~ 4200 LBS.
 RT-4 ~ 1000 LBS.
 THE WEIGHTS OF NEW UNITS ARE SHOWN ON THE SCHEDULE AND INCLUDE ADAPTER CURB WEIGHT.

1 MECHANICAL ROOF PLAN - NEW WORK
 SCALE: 1/8"=1'-0"

REVISIONS ISSUED FOR BIDS	DATE	BY
	02-15-16	
W-T MECHANICAL/ELECTRICAL ENGINEERING, L.L.C. MECHANICAL AND ELECTRICAL DIVISION 2015 Wilson Avenue Naperville, IL 60563 PH: (630) 350-8333 FAX: (630) 350-8444 www.wtengineering.com E. LICENSED MECHANICAL/ELECTRICAL ENGINEERING, L.L.C. LICENSE NO. 001-00000000		
W-T		
PRAIRIE STONE SPORTS & WELLNESS CENTER NATATORIUM HVAC UNITS REPLACEMENT HOFFMAN ESTATES, ILLINOIS		
SHEET TITLE: MECHANICAL ROOF PLAN - NEW WORK		
DATE:	02-15-2016	
SCALE:	AS NOTED	
DRAWN:	MOV, KJS	
CHECK:	STT	
JOB:	M15420	
SHEET	M-2	

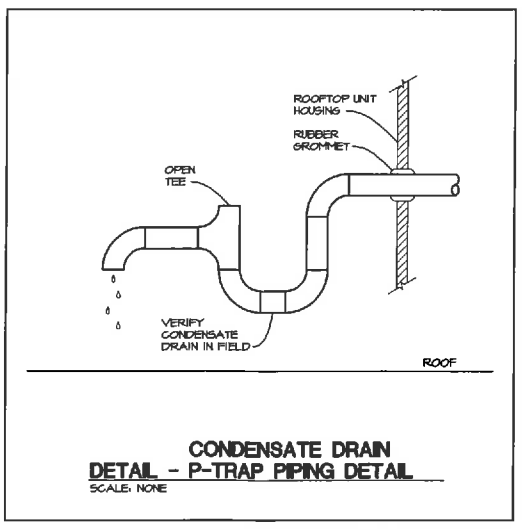
POOL HEATING / COOLING AND DEHUMIDIFICATION UNIT SCHEDULE

ITEM TAG	MANUFACTURER AND MODEL NUMBER	SUPPLY FAN				MINIMUM EXHAUST FAN				PURGE EXHAUST FAN				REFRIGERATION SYSTEM				HOT GAS REHEAT COIL				HEATING SECTION		HEAT RECOVERY				POOL WATER HEATER				ELECTRICAL DATA			UNIT WEIGHT WITH CURB (LBS)	REMARKS		
		GPM	ESP	HP	RPM	GPM	ESP	HP	RPM	GPM	ESP	HP	RPM	NO. OF COMP.	COND. MOISTURE REMOVAL TONS	SENS. MEH	TOTAL MEH	REFRIG. TYPE	REFRIG. (LBS)	NO. OF CIRCUITS	TOTAL HEAT RELEGT. MEH	IN/FUT (M/BH)	OUT/FUT (M/BH)	EXH. GPM	O.A. GPM	HEAT RECOVERY EFFECTIVENESS	PUMP HP	FLUID GPM	TYPE	CAPACITY MEH	WATER P.D. PSIG	FLUID GPM	VOLT-FH-HZ	MCA			MAX FUSE	
RTU-A	SERESCO® 8NE-D20-VB-X-16FBS18362E4AD4	8000	1.0'	2 @ 3.5	1800 ECM	2310	0.75'	2.4	ECM	6440	0.75'	3.9	ECM	2	20	127.6	132.8	210.6	R-410A	2 x 75	2	336	450	360	2310	2100	54%	0.25	20	CUPRO-NICKEL CO-AXIAL	186	6.0	36	480-3-60	55.0	70	6200	ALL
RTU-C	SERESCO® 8NF-D30-VB-X-16FBS18362E4AD4	18,000	1.5'	20	VFD	2475	0.75'	2.4	ECM	17325	0.75'	1 @ 5 1 @ 3	ECM	2	30	171.1	191.6	384.4	R-410A	85	2	480.5	650	520	2475	2250	55%	0.25	24	CUPRO-NICKEL CO-AXIAL	273	6.0	45	480-3-60	93	110	14,500	ALL

- REMARKS:
- MOUNT UNIT ON EXISTING ROOF CURB WITH NEH ADAPTER CURB. SEE PLANS FOR ADAPTER CURB DESCRIPTION. CONTACT RON HOUSTON AT THYBAR FOR PRICING, 650-442-8450.
 - RECONNECT EXISTING DUCT MOUNTED SMOKE DETECTOR AND VERIFY PROPER OPERATION. UNIT SHALL SHUT DOWN UPON SMOKE DETECTOR.
 - VERIFY EXACT VOLTAGE IN THE FIELD PRIOR TO ORDERING.
 - PROVIDE FLEXIBLE CANVAS AT ALL DUCT CONNECTIONS TO UNIT.
 - PROVIDE GAS CONNECTION TO UNIT WITH REGULATOR, GAS COCK, UNION AND DIRT LEG.
 - PROVIDE WITH FACTORY MOUNTED NON-FUSED DISCONNECT SWITCH, FIELD WIRING BY ELECTRICAL CONTRACTOR.
 - UNIT SHALL BE ETL LISTED. UNIT SHALL BE BAGNET COMPATIBLE.
 - MAINTAIN MANUFACTURER'S RECOMMENDED SERVICE CLEARANCES.
 - PROVIDE SHUT-DOWN RELAYS INTERLOCKED WITH THE FIRE ALARM SYSTEM TO SHUT-DOWN THE UNIT UPON ALARM ACTIVATION. WIRING PER LOCAL CODES BY ELECTRICAL CONTRACTOR.
 - PROVIDE 2" THICK MERV 8 PANEL FILTERS FOR OUTSIDE AIR INTAKE, RETURN AIR AND EXHAUST.
 - UNIT SHALL HAVE 4 ROW HEAT RECOVERY COILS WITH GLYCOL CIRCULATING PUMP ON MINIMUM OUTSIDE AIR EXHAUST FANS.
 - 2" INJECTED FOAM RISER PANELS ARE REQUIRED. SINGLE WALL CONSTRUCTION IS NOT ACCEPTABLE.
 - ROOFTOP UNITS SHALL BE SINGLE POINT POWER FOR COLLECTIVE AIR HANDLING AND CONDENSING SECTIONS. SPLIT CONDENSING UNITS/CONDENSERS ARE NOT ACCEPTABLE. FIELD REFRIGERANT PIPING IS NOT ACCEPTABLE.
 - FACTORY PROVIDED AND MOUNTED DPG CONTROLS MUST BE INTEGRAL TO UNIT AND HAVE SPECIFIC NATATORIUM DEHUMIDIFICATION, HEAT RECOVERY AND EXHAUST CONTROL.
 - PROVIDE MODULATING HOT GAS REHEAT COIL.
 - PROVIDE EXACT FOOTPRINT AS SHOWN ON THE DRAWINGS.
 - PROVIDE VFD'S WITH MANUAL BYPASS FOR BOTH SUPPLY AND EXHAUST FANS.
 - SYSTEMS THAT ALLOW REQUIRE COMPRESSOR OPERATION IN THE WINTER ARE NOT ALLOWED.
 - HINGED ACCESS DOORS ARE REQUIRED FOR ALL SECTIONS.
 - MANUFACTURER TO PROVIDE A REMOTE HUMAN INTERFACE TO CONTROL/MONITOR THE ROOFTOP MOUNTED EQUIPMENT FROM INDOORS. MOUNTING AND WIRING OF REMOTE HUMAN INTERFACE BY INSTALLING CONTRACTOR.
 - LAP POOL MUST HAVE AIR PATH FOR EVACUATOR. ROOFTOP MANUFACTURER TO PROVIDE AIRFLOW MONITORING DAMPER TO REGULATE AIR FROM THE EVACUATOR AND THRU THE AIR TO AIR FLAT PLATE HEAT RECOVERY DEVICE.
 - PROVIDE WITH INSULATED FLOOR PAN AND DRAIN PAN. DRAIN PAN SHALL BE STAINLESS STEEL, DOUBLE SLOPED.
 - PROVIDE INTERIOR AND EXTERIOR CONSTRUCTION - GALVALUME WITH SILICONE POLYESTER TOP COAT.
 - PROVIDE MODULATING GAS BURNER WITH 4 TO 1 TURNDOWN AND 409 S.S. HEAT EXCHANGER AND ELECTRONIC IGNITION.
 - PROVIDE FACTORY PROGRAMMED CONTROLS PACKAGE WITH LED INTERFACE.
 - PROVIDE NECESSARY CONTROL INTERFACE FOR EXISTING POOL WATER CIRCULATING PUMPS - PER MANUFACTURER'S REQUIREMENTS. VERIFY PROPER OPERATION.
 - PROVIDE NEH ETHERNET CABLE CONNECTION TO EACH UNIT TO ALLOW REMOTE "WEBSENTRY" INTERNET ACCESS.
 - PROVIDE FACTORY UNIT MOUNTED CONTROLS.
 - PROVIDE FACTORY TRAINED TECHNICIAN FOR START-UP AND OWNER TRAINING.

MECHANICAL GENERAL NOTES

- HVAC CONTRACTOR SHALL PERFORM ALL CUTTING AND PATCHING OF BUILDING MATERIALS AS REQUIRED FOR INSTALLATION OF HIS WORK AND PROVIDE ALL HOLES AND SLEEVES FOR INSTALLATION OF MECHANICAL WORK.
- SEAL ALL PENETRATIONS THRU EXTERIOR WALLS WATER AND WEATHER TIGHT. ALL ROOF FLASHING SHALL BE BY THE ROOFING CONTRACTOR.
- CONTRACTOR SHALL INCLUDE ALL MISCELLANEOUS ITEMS REQUIRED TO COMPLETE THE WORK, INCLUDING MOVING AND RIGGING OF MATERIAL AND EQUIPMENT, ALL HANGER, SUPPORTS, ANCHORS, EXPANSION MEANS, FITTINGS AND SLEEVES.
- CONTRACTOR SHALL BE RESPONSIBLE FOR RELOCATION OF ANY EXISTING MINOR INTERFERENCES, INCLUDING CONDUIT, HANGERS, SPRINKLER PIPING AND SPRINKLER HEADS AT NO ADDITIONAL COST.
- THE MECHANICAL CONTRACTOR SHALL SUBMIT TO THE BUILDING DEPARTMENT THE MANUFACTURER'S INSTALLATION INSTRUCTIONS FOR THE MECHANICAL EQUIPMENT.
- PROVIDE GAS PRESSURE REGULATORS AT ALL FUEL BURNING APPLIANCES. SIZE REGULATORS FOR THE MFR. REQUIRED FLOW AND INLET AND OUTLET PRESSURES.
- CONTRACTOR SHALL BE RESPONSIBLE FOR VISITING THE SITE AND VERIFYING ALL EXISTING FIELD CONDITIONS PRIOR TO SUBMISSION OF HIS BID. THE CONTRACT DOCUMENTS INDICATE APPROXIMATE LOCATION OF EXISTING DUCTWORK AND PIPING AND ARE DIAGRAMMATIC IN NATURE. THE CONTRACTOR SHALL BE RESPONSIBLE FOR DETERMINING THE ACTUAL LOCATION AND ROUTING OF THE EXISTING DUCTS AND PIPING. CONTRACTOR IS RESPONSIBLE FOR COORDINATING HIS WORK WITH THE WORK OF ALL OTHER TRADES AND MAKING ANY NECESSARY MODIFICATIONS TO HIS WORK AT NO ADDITIONAL COST, INCLUDING ALL OFFSETS.
- ALL SUPPLY, RETURN AND EXHAUST DUCTWORK ASSOCIATED WITH THE NATATORIUM SHALL BE ALUMINUM.
- ALL NEW POOL WATER HEAT RECOVERY PIPING SHALL BE TYPE L COPPER WITH 3/4" "ARMARPLEX" INSULATION. PROVIDE DIELECTRIC FITTING WHEN CONNECTING TO DISSIMILAR METALS.



MECHANICAL LEGEND

- NEW DUCTWORK AND AIR DEVICES TO MATCH EXISTING.
- EXISTING DUCTWORK AND AIR DEVICES TO REMAIN. CLEAN AND RECONDITION AS REQUIRED.
- - - EXISTING DUCTWORK AND AIR DEVICES TO BE REMOVED.
- Ⓧ THERMOSTAT
- Ⓞ SENSOR (REMOTE TEMPERATURE SENSOR UNLESS OTHERWISE NOTED)
- Ⓛ TAKEOFF WITH MANUAL VOLUME DAMPER
- Ⓛ LOCKABLE MANUAL VOLUME DAMPER (MVD)
- FD FIRE DAMPER
- A.F.F. ABOVE FINISHED FLOOR
- B.F.C. BELOW FINISHED CEILING
- M.V.D. LOCKABLE MANUAL VOLUME DAMPER
- W.C. INCHES OF WATER COLUMN
- U.C. UNDER CUT DOOR, 3/4"
- U.T.R. UP THROUGH ROOF
- Ⓧ NEH TO EXISTING CONNECTION
- Ⓧ DEMO BREAK POINT. DEMO BACK TO THIS POINT
- RT-1 EQUIPMENT TAG
- Ⓧ (GPM) (SIZE) NEH AIR DEVICE TAG

W-T MECHANICAL/ELECTRICAL ENGINEERING, L.L.C.
2875 Prairie Avenue
Naperville, IL 60563
Phone: 630-201-4333 Fax: 630-201-0944
www.wtengineering.com
Ill. License No. 06-005872 Exp. 04/2016

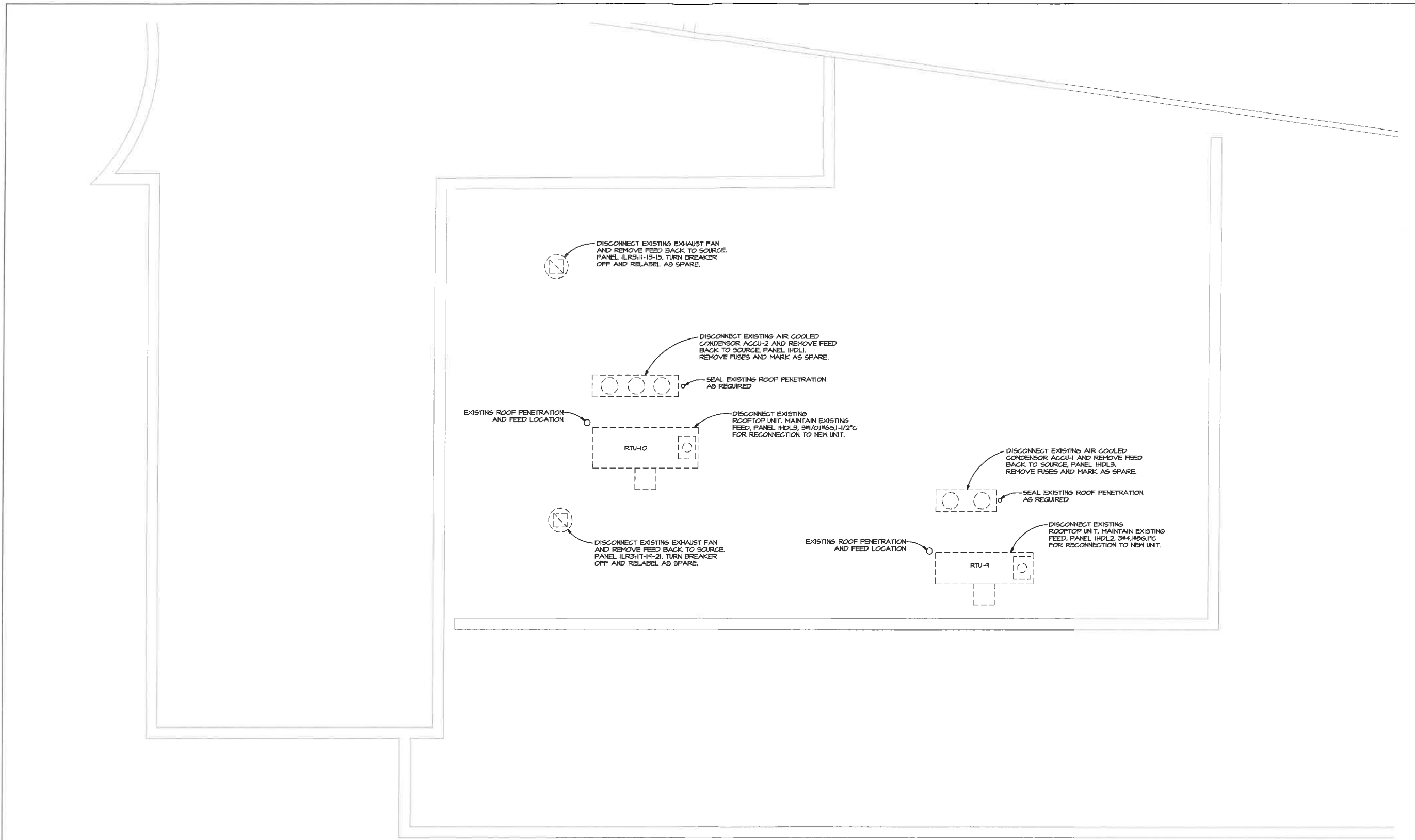
W-T

**PRAIRIE STONE SPORTS & WELLNESS CENTER
NATATORIUM HVAC UNITS REPLACEMENT
HOFFMAN ESTATES, ILLINOIS**


**MECHANICAL
SCHEDULE & NOTES**

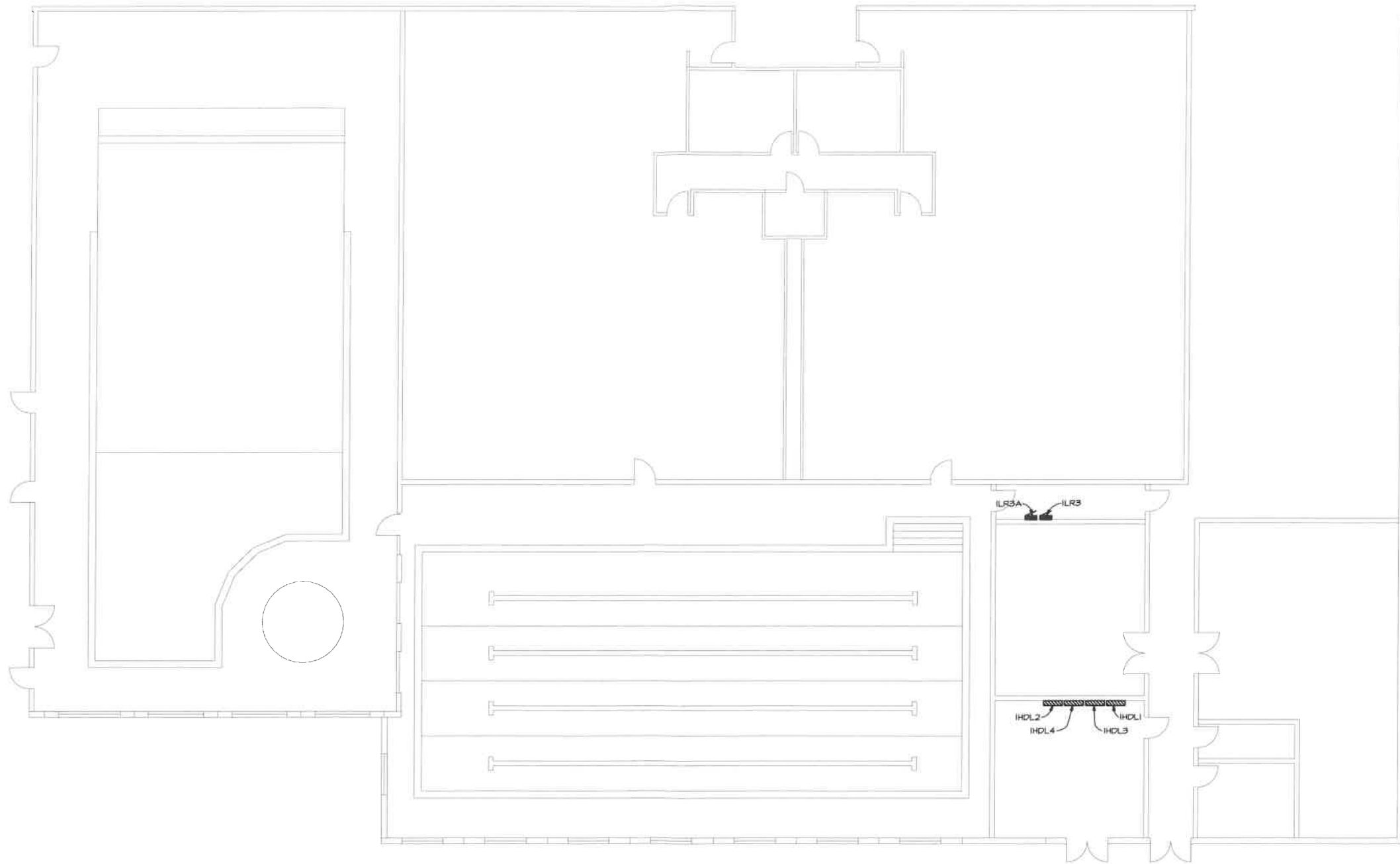
M-3

DATE: 02-15-2016
SCALE: AS NOTED
DRAWN: MOV, KJS
CHECK: STT
JOB: M15420
SHEET



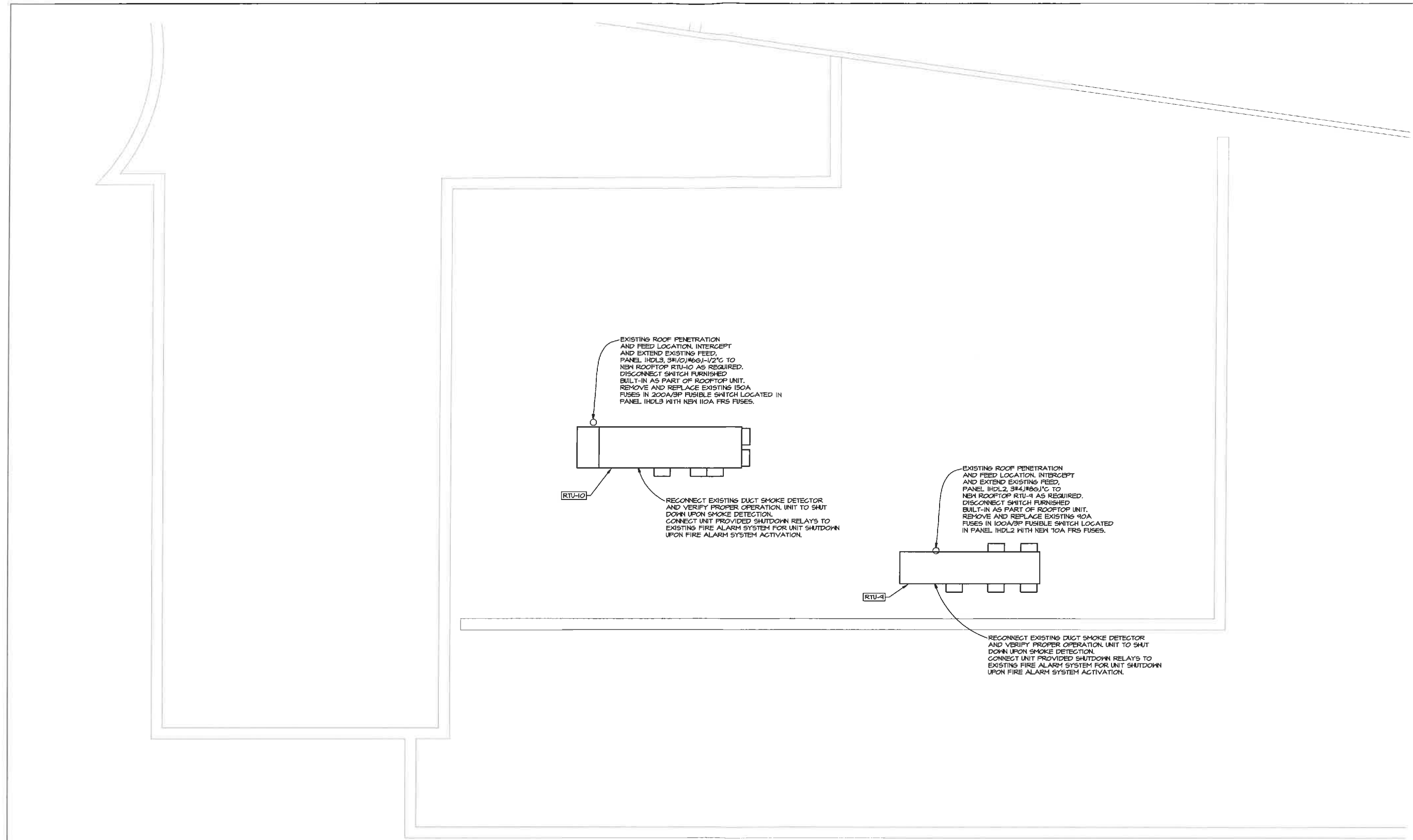
1 **ELECTRICAL ROOF PLAN - DEMOLITION** 
 SCALE: 1/8"=1'-0"

REVISIONS	DATE	BY
ISSUED FOR BIDS	02-15-16	
W-T MECHANICAL/ELECTRICAL ENGINEERING, L.L.C. MECHANICAL AND ELECTRICAL ENGINEERS 2019 Prairie Avenue Naperville, IL 60563 PH: (630) 206-4000 FAX: (630) 206-4044 www.wtengineering.com IL License No. 013-020617 EXP. 12/31/18 ILLINOIS MECHANICAL/ELECTRICAL ENGINEERING, L.L.C.		
		
PRAIRIE STONE SPORTS & WELLNESS CENTER NATATORIUM HVAC UNITS REPLACEMENT HOFFMAN ESTATES, ILLINOIS		
SHEET TITLE: ELECTRICAL ROOF PLAN - DEMOLITION		
DATE:	02-15-2016	
SCALE:	AS NOTED	
DRAWN:	MOV, KJS	
CHECK:	STT	
JOB:	M15420	
SHEET		
ED-1		

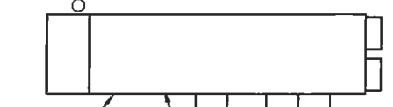


1 ELECTRICAL FLOOR PLAN - NEW WORK 
 SCALE: 1/8"=1'-0"

W-T MECHANICAL/ELECTRICAL ENGINEERING, LLC. <small>2016 Franklin Avenue Suite 100 Naperville, IL 60563 PH: (630) 324-2323 FAX: (630) 324-4144 www.wt-engineers.com E-MAIL: WTE@WT-ENGINEERS.COM</small>		REVISIONS ISSUED FOR BIDS	DATE 02-15-16	BY
W-T <small>COMPANY © 2016 W-T MECHANICAL/ELECTRICAL ENGINEERING, LLC.</small>		PRAIRIE STONE SPORTS & WELLNESS CENTER NATATORIUM HVAC UNITS REPLACEMENT HOFFMAN ESTATES, ILLINOIS		
SHEET TITLE: ELECTRICAL FLOOR PLAN - NEW WORK		DATE: 02-15-2016 SCALE: AS NOTED DRAWN: MOV, KJS CHECK: STT JOB: M15420		
SHEET E-1		COPYRIGHT © 2016 W-T MECHANICAL/ELECTRICAL ENGINEERING, LLC.		

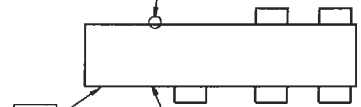


EXISTING ROOF PENETRATION AND FEED LOCATION. INTERCEPT AND EXTEND EXISTING FEED, PANEL 1HD13, 3#1/2" 1#6G1-1/2" TO NEW ROOFTOP RTU-10 AS REQUIRED. DISCONNECT SWITCH FURNISHED BUILT-IN AS PART OF ROOFTOP UNIT. REMOVE AND REPLACE EXISTING ISOA FUSES IN 200A/3P FUSIBLE SWITCH LOCATED IN PANEL 1HD13 WITH NEW 100A FRS FUSES.



RECONNECT EXISTING DUCT SMOKE DETECTOR AND VERIFY PROPER OPERATION. UNIT TO SHUT DOWN UPON SMOKE DETECTION. CONNECT UNIT PROVIDED SHUTDOWN RELAYS TO EXISTING FIRE ALARM SYSTEM FOR UNIT SHUTDOWN UPON FIRE ALARM SYSTEM ACTIVATION.

EXISTING ROOF PENETRATION AND FEED LOCATION. INTERCEPT AND EXTEND EXISTING FEED, PANEL 1HD12, 3#4" 1#6G1" TO NEW ROOFTOP RTU-4 AS REQUIRED. DISCONNECT SWITCH FURNISHED BUILT-IN AS PART OF ROOFTOP UNIT. REMOVE AND REPLACE EXISTING 90A FUSES IN 100A/3P FUSIBLE SWITCH LOCATED IN PANEL 1HD12 WITH NEW 10A FRS FUSES.



RECONNECT EXISTING DUCT SMOKE DETECTOR AND VERIFY PROPER OPERATION. UNIT TO SHUT DOWN UPON SMOKE DETECTION. CONNECT UNIT PROVIDED SHUTDOWN RELAYS TO EXISTING FIRE ALARM SYSTEM FOR UNIT SHUTDOWN UPON FIRE ALARM SYSTEM ACTIVATION.

1 ELECTRICAL ROOF PLAN - NEW WORK
SCALE: 1/8"=1'-0"

REVISIONS	DATE	BY
ISSUED FOR BIDS	02-15-16	
W-T MECHANICAL/ELECTRICAL ENGINEERING, L.L.C. MECHANICAL AND ELECTRICAL ENGINEERS 2019 Pruden Avenue Suite 100 Ft. Lauderdale, FL 33309 Phone: (954) 333-4444 Fax: (954) 333-4444 www.wtengineering.com E. License No.: 121000012 EEP 06/2016 Copyright © 2016 W-T MECHANICAL/ELECTRICAL ENGINEERING, L.L.C.		
W-T		
PRAIRIE STONE SPORTS & WELLNESS CENTER NATATORIUM HVAC UNITS REPLACEMENT HOFFMAN ESTATES, ILLINOIS		
SHEET TITLE: ELECTRICAL ROOF PLAN - NEW WORK		
DATE:	02-15-2016	
SCALE:	AS NOTED	
DRAWN:	MOV, KJS	
CHECK:	STT	
JOB:	M15420	
SHEET	E-2	