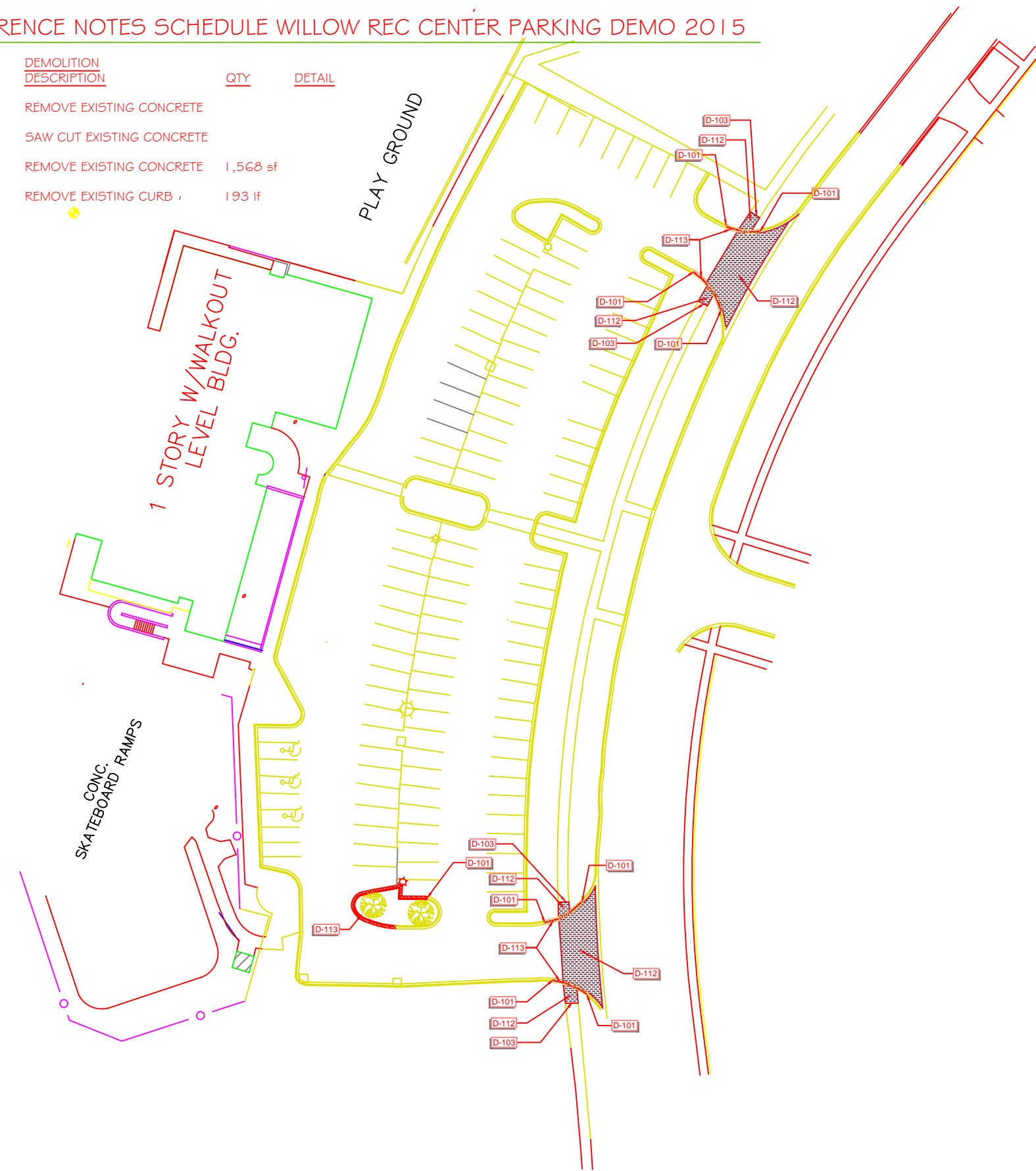


REFERENCE NOTES SCHEDULE WILLOW REC CNTR PARKING DEMO 2015

SYMBOL	DEMOLITION DESCRIPTION	QTY	DETAIL
D-101	REMOVE EXISTING CONCRETE		
D-103	SAW CUT EXISTING CONCRETE		
D-112	REMOVE EXISTING CONCRETE	1,566 sf	
D-113	REMOVE EXISTING CURB	193 lf	



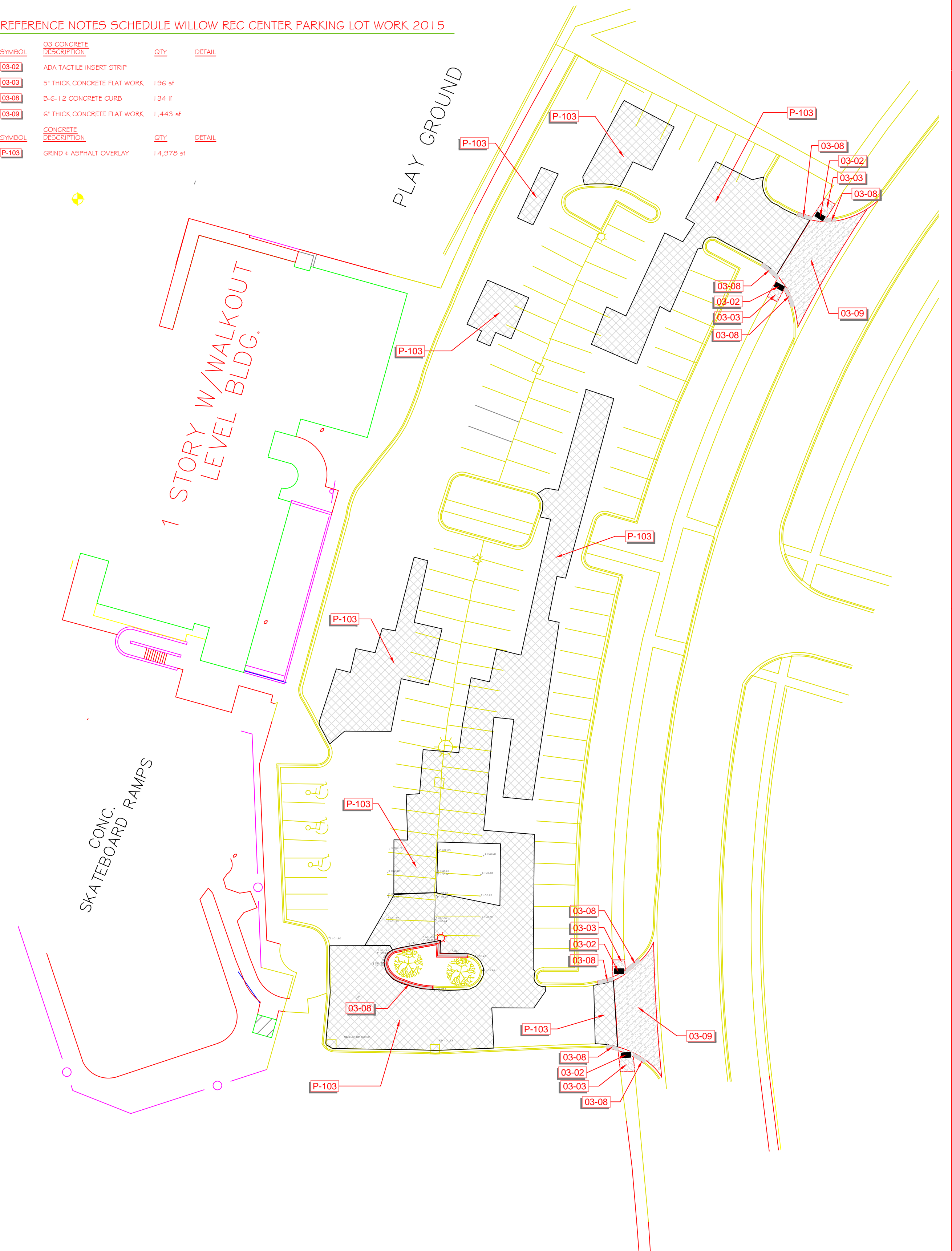
LOT 13

LOT 19

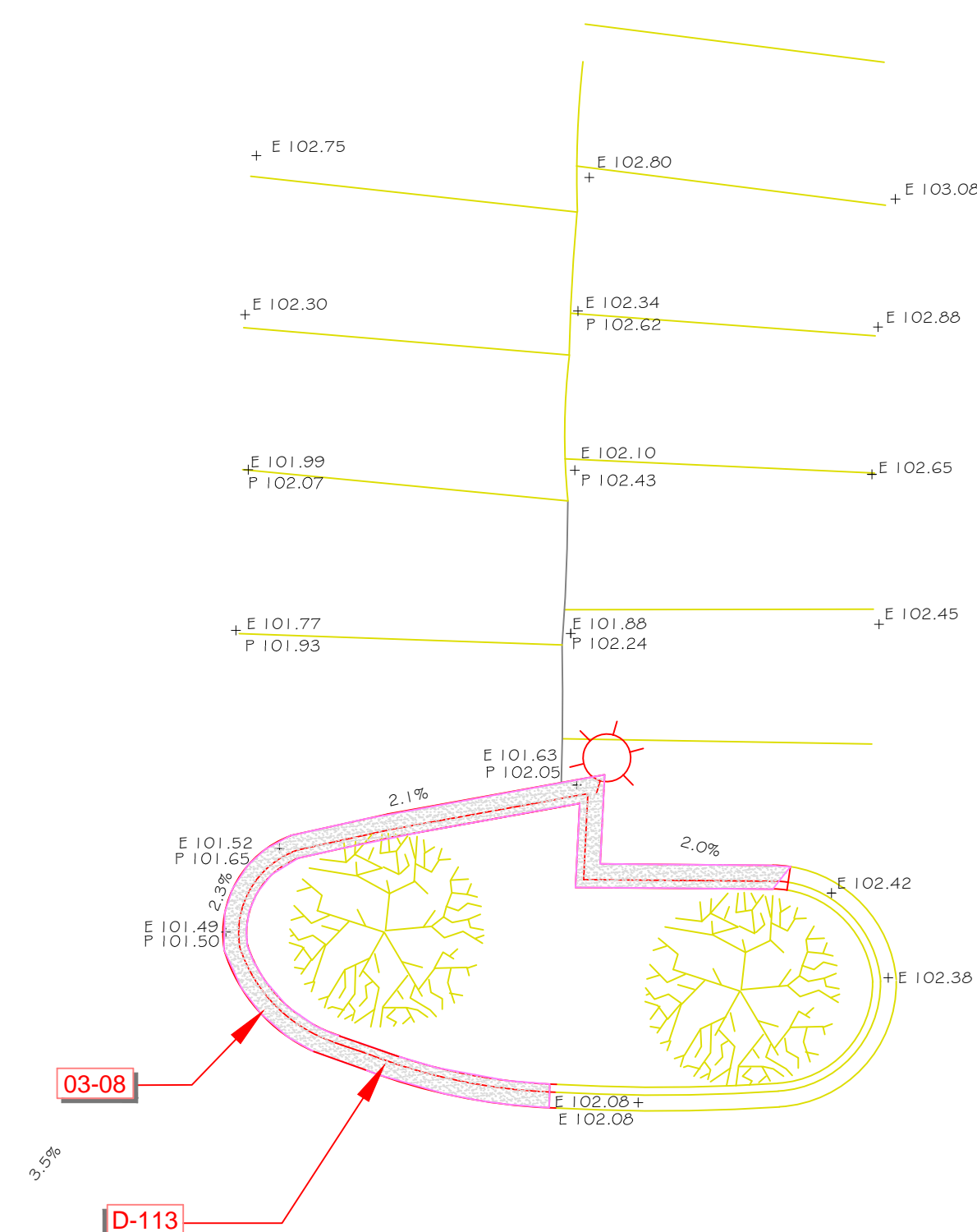
WILLOW REC. CNTR. PARKING LOT CONCRETE REMOVAL PLAN
SCALE 1" = 60 FT.

REFERENCE NOTES SCHEDULE WILLOW REC CENTER PARKING LOT WORK 2015

SYMBOL	CONCRETE DESCRIPTION	QTY	DETAIL
03-02	ADA TACTILE INSERT STRIP		
03-03	5" THICK CONCRETE FLAT WORK	196 sf	
03-08	B-4-1.2 CONCRETE CURB	134 lf	
03-09	6" THICK CONCRETE FLAT WORK	1,443 sf	
SYMBOL	CONCRETE DESCRIPTION	QTY	DETAIL
P-103	GRIND + ASPHALT OVERLAY	14,976 sf	



WILLOW REC. CNTR. PARKING LOT CONCRETE & ASPHALT WORK PLAN
SCALE 1" = 30 FT.

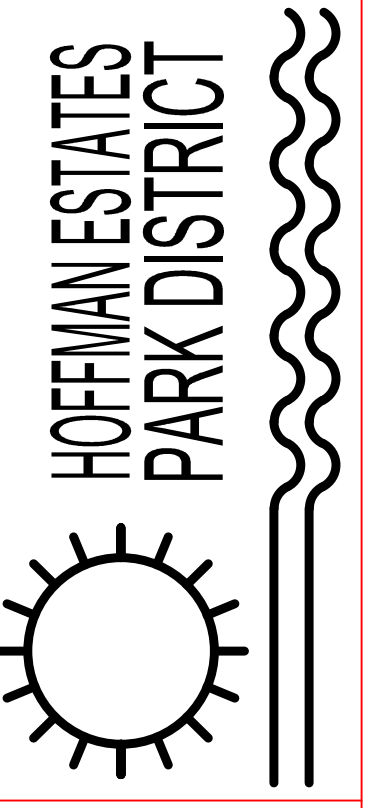


ENLARGED VIEW CURB REPLACEMENT PLAN
SCALE 1" = 10 FT.

No.	Description	Date
1	ISSUED FOR REVIEW	12/10/2014
2	ISSUED FOR BID	01/16/2015

PAVING PROJECTS
2015
WILLOW RECREATION CENTER PARKING LOT
3600 LEXINGTON AVE

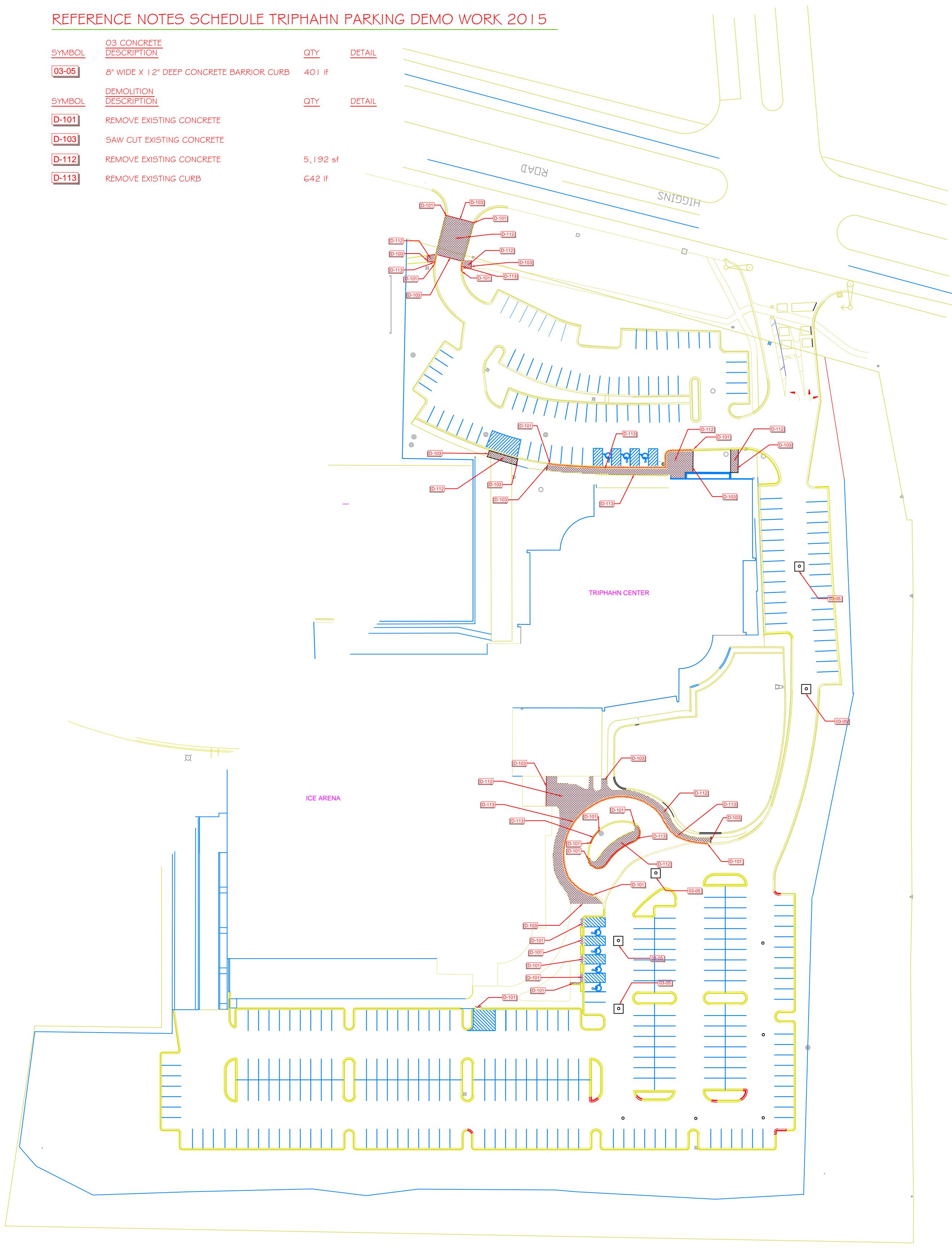
1665 W. HIGGINS ROAD
HOFFMAN ESTATES, ILLINOIS 60195
PHONE: (647)-865-7500
FAX: (647)865-7523



SCALE AS SHOWN'

REFERENCE NOTES SCHEDULE TRIPHAHN PARKING DEMO WORK 2015

SYMBOL	Q3 CONCRETE DESCRIPTION	QTY	DETAIL
03-05	8" WIDE X 12" DEEP CONCRETE BARRIER CURB	401 lf	
SYMBOL	DEMOLITION DESCRIPTION	QTY	DETAIL
D-101	REMOVE EXISTING CONCRETE		
D-103	SAW CUT EXISTING CONCRETE		
D-112	REMOVE EXISTING CONCRETE	5,192 sf	
D-113	REMOVE EXISTING CURB	642 lf	



TRIPHAHN CENTER PARKING LOT CONCRETE REMOVAL PLAN
SCALE 1" = 60 FT.

REFERENCE NOTES SCHEDULE TRIPHAHN NORTH LOT PAV 2015

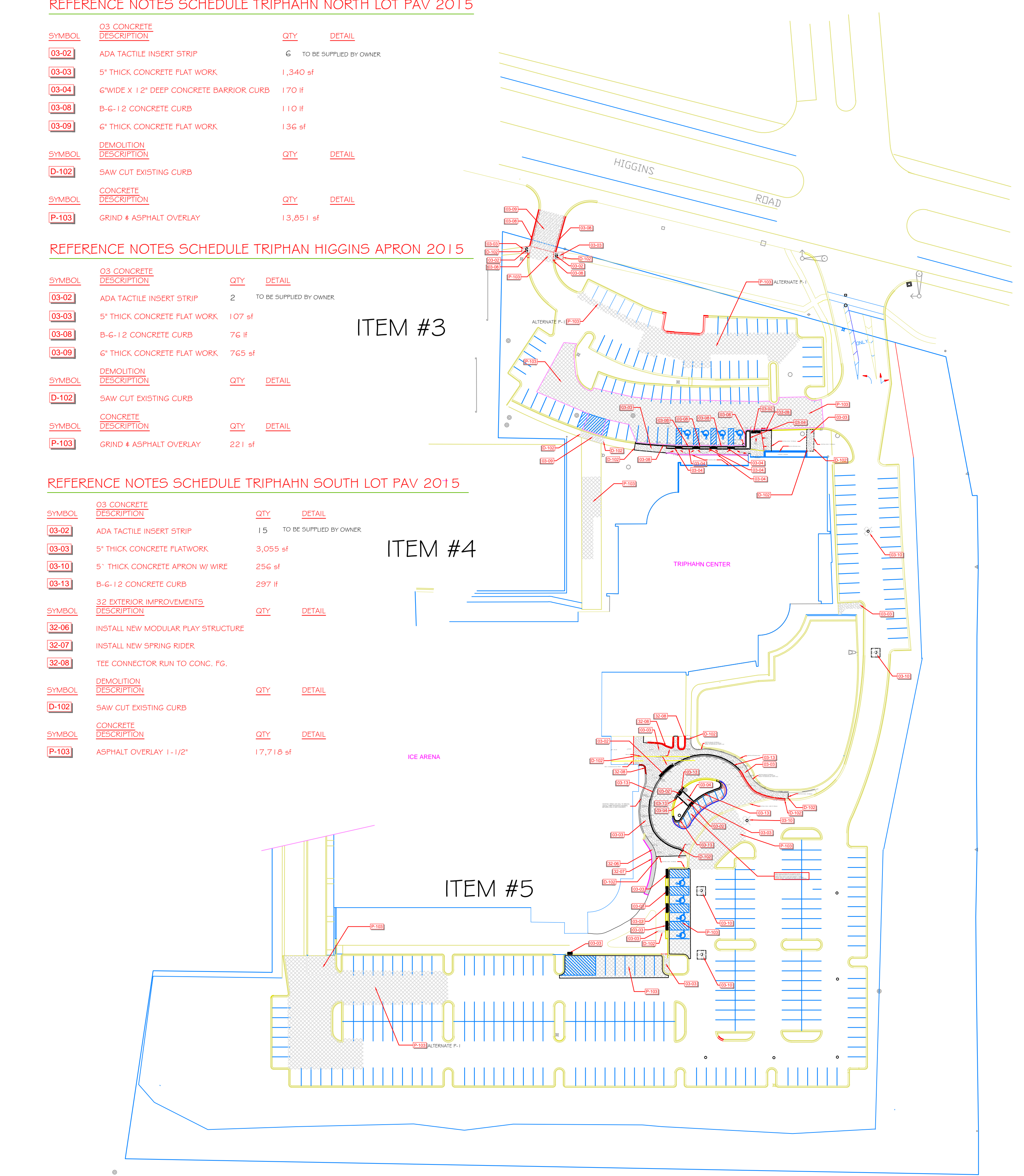
SYMBOL	Q3 CONCRETE DESCRIPTION	QTY	DETAIL
03-02	ADA TACTILE INSERT STRIP	6	TO BE SUPPLIED BY OWNER
03-03	5" THICK CONCRETE FLAT WORK	1,340 sf	
03-04	6" WIDE X 12" DEEP CONCRETE BARRIER CURB	170 lf	
03-08	B-G-12 CONCRETE CURB	110 lf	
03-09	6" THICK CONCRETE FLAT WORK	136 sf	
SYMBOL	DEMOLITION DESCRIPTION	QTY	DETAIL
D-102	SAW CUT EXISTING CURB		
SYMBOL	CONCRETE DESCRIPTION	QTY	DETAIL
P-103	GRIND & ASPHALT OVERLAY	13,851 sf	

REFERENCE NOTES SCHEDULE TRIPHAHN HIGGINS APRON 2015

SYMBOL	Q3 CONCRETE DESCRIPTION	QTY	DETAIL
03-02	ADA TACTILE INSERT STRIP	2	TO BE SUPPLIED BY OWNER
03-03	5" THICK CONCRETE FLAT WORK	107 sf	
03-08	B-G-12 CONCRETE CURB	76 lf	
03-09	6" THICK CONCRETE FLAT WORK	765 sf	
SYMBOL	DEMOLITION DESCRIPTION	QTY	DETAIL
D-102	SAW CUT EXISTING CURB		
SYMBOL	CONCRETE DESCRIPTION	QTY	DETAIL
P-103	GRIND & ASPHALT OVERLAY	221 sf	

REFERENCE NOTES SCHEDULE TRIPHAHN SOUTH LOT PAV 2015

SYMBOL	Q3 CONCRETE DESCRIPTION	QTY	DETAIL
03-02	ADA TACTILE INSERT STRIP	15	TO BE SUPPLIED BY OWNER
03-03	5" THICK CONCRETE FLATWORK	3,055 sf	
03-10	5" THICK CONCRETE APRON W/ WIRE	256 sf	
03-13	B-G-12 CONCRETE CURB	297 lf	
SYMBOL	32 EXTERIOR IMPROVEMENTS DESCRIPTION	QTY	DETAIL
32-06	INSTALL NEW MODULAR PLAY STRUCTURE		
32-07	INSTALL NEW SPRING RIDER		
32-08	TEE CONNECTOR RUN TO CONC. FG.		
SYMBOL	DEMOLITION DESCRIPTION	QTY	DETAIL
D-102	SAW CUT EXISTING CURB		
SYMBOL	CONCRETE DESCRIPTION	QTY	DETAIL
P-103	ASPHALT OVERLAY 1-1/2"	17,718 sf	

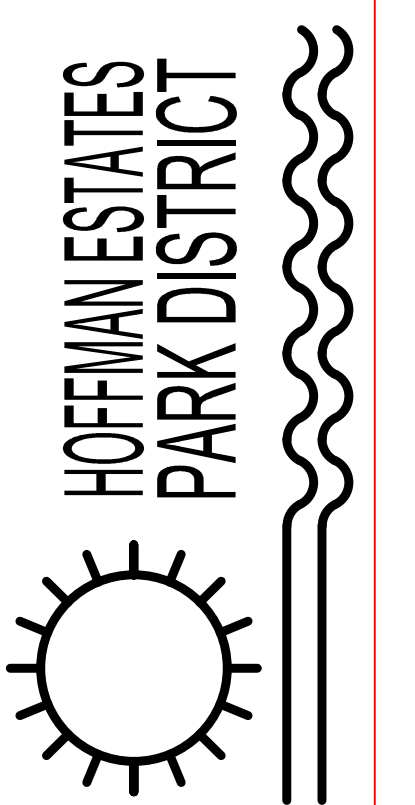


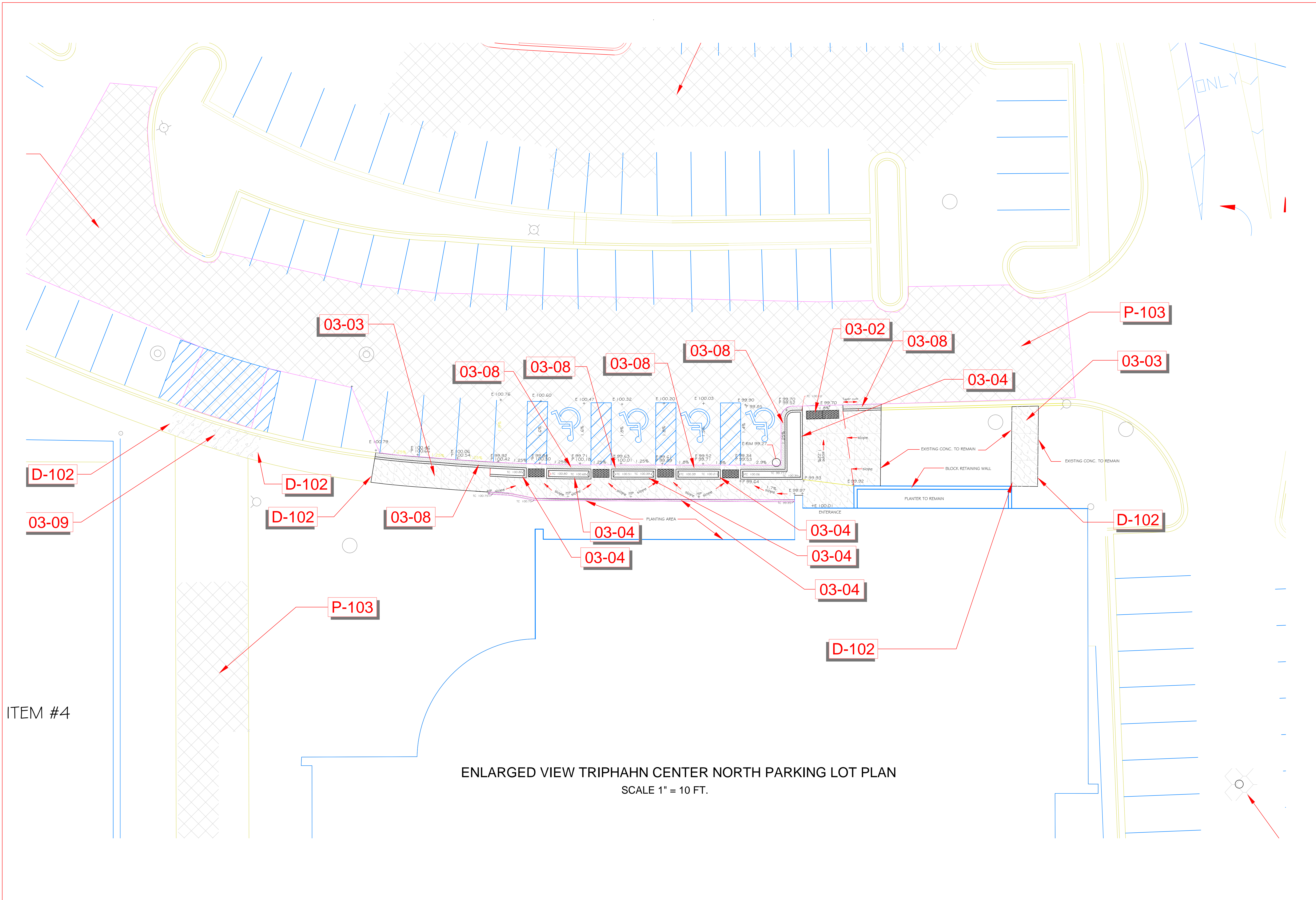
TRIPHAHN CENTER PARKING LOT CONCRETE & ASPHALT WORK PLAN
SCALE 1" = 60 FT.

No.	Description	Date
1	ISSUED FOR REVIEW	12/10/2014
2	ISSUED FOR BID	01/16/2015 EMB

PAVING PROJECTS
2015
TRIPHAHN CENTER PARKING LOT
1685 WEST HIGGINS ROAD

1685 W. HIGGINS ROAD
HOFFMAN ESTATES, ILLINOIS 60195
PHONE: (847)-885-7500
FAX: (847)885-7523





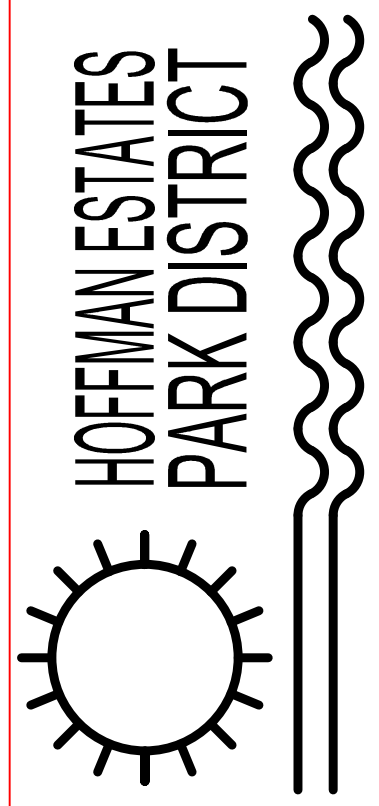
ITEM #4

ENLARGED VIEW TRIPHAHN CENTER NORTH PARKING LOT PLAN
SCALE 1" = 10 FT.

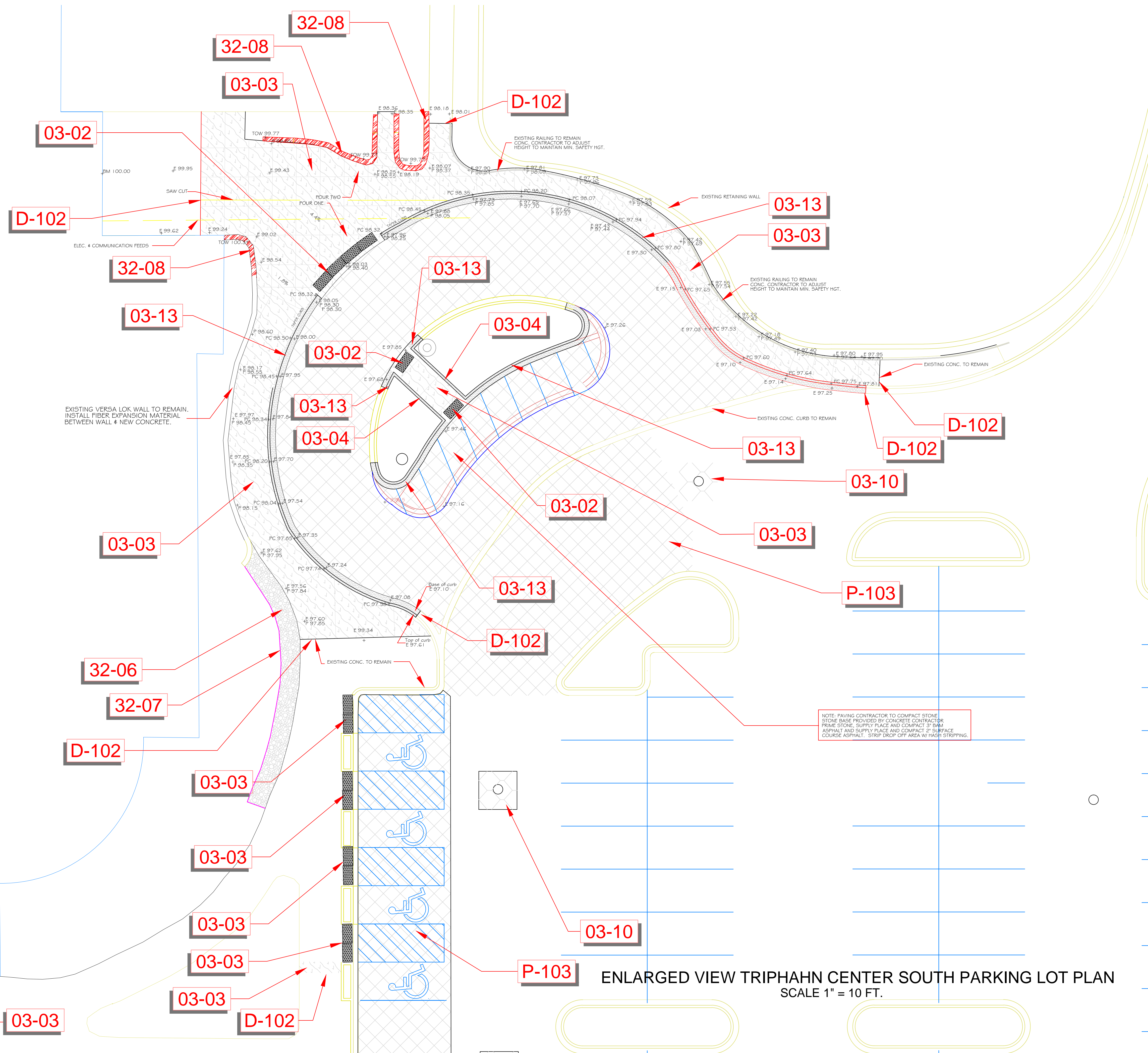
No.	Description	Date
1	ISSUED FOR REVIEW	12/10/2014
2	ISSUED FOR BID	01/06/2015

PAVING PROJECTS
2015
TRIPHAHN CENTER PARKING LOT
1685 WEST HIGGINS ROAD

1685 W. HIGGINS ROAD
HOFFMAN ESTATES, ILLINOIS 60195
PHONE: (847) 885-7500
FAX: (847) 885-7523



ITEM #5



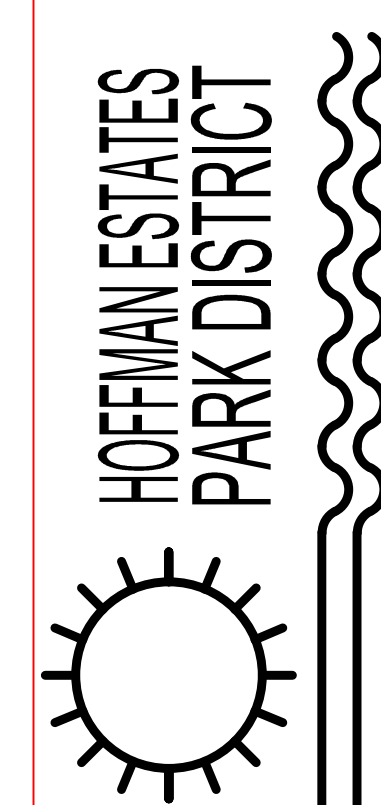
ENLARGED VIEW TRIPHAHN CENTER SOUTH PARKING LOT PLAN
SCALE 1" = 10 FT.

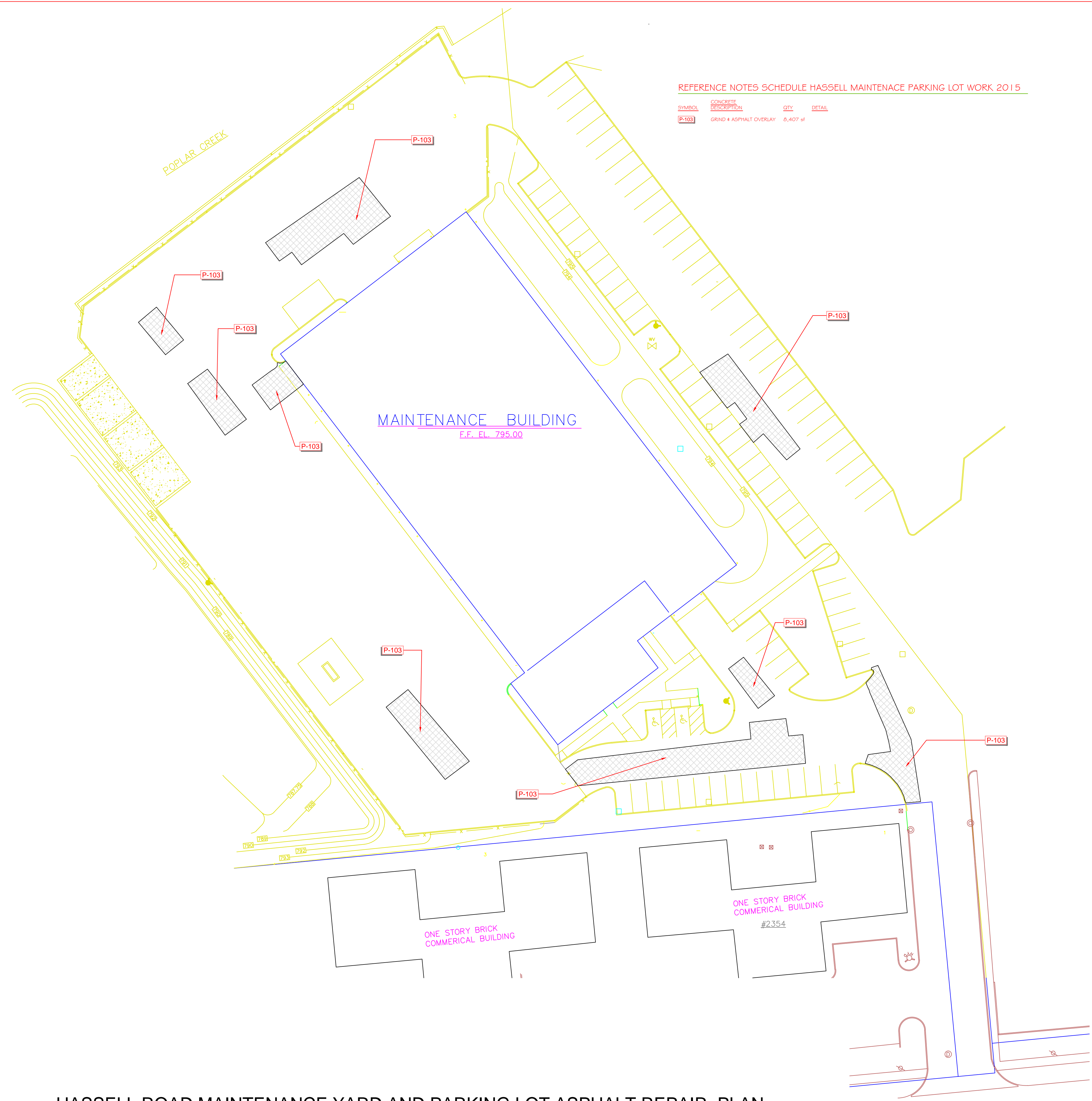
No.	Description	Date
1	ISSUED FOR REVIEW	12/10/2014
2	ISSUED FOR BID	01/16/2015 09

**PAVING PROJECTS
2015**

**TRIPHAHN CENTER PARKING LOT
1685 WEST HIGGINS ROAD**

1685 W. HIGGINS ROAD
HOFFMAN ESTATES, ILLINOIS 60195
PHONE: (847)-885-7500
FAX: (847)885-7523



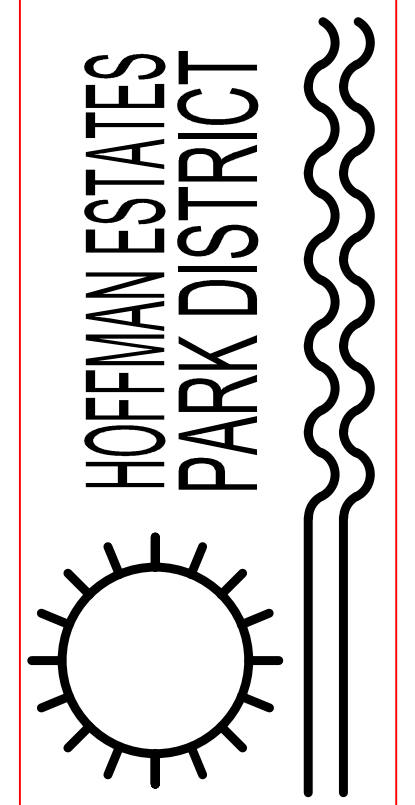


HASSELL ROAD MAINTENANCE YARD AND PARKING LOT ASPHALT REPAIR PLAN
SCALE 1" = 30 FT.

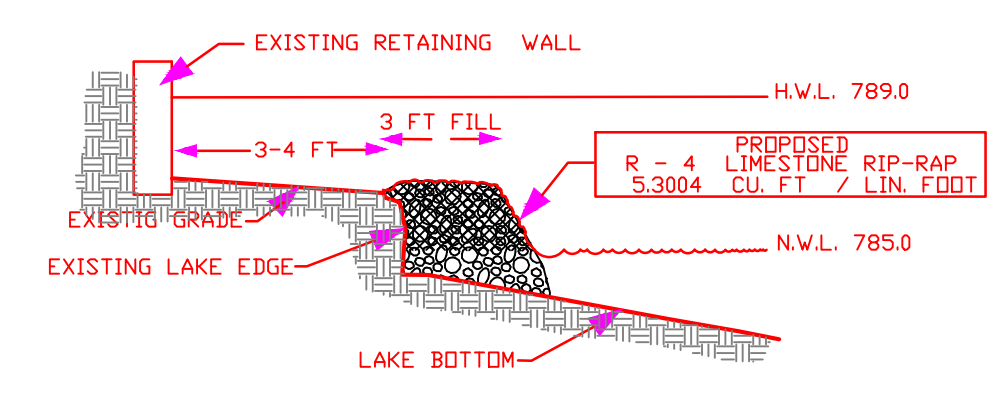
No.	Description	Date
1	ISSUED FOR REVIEW	12/10/2014
2	ISSUED FOR BID	01/16/2015 em

PAVING PROJECTS
2015
HASSELL ROAD MAINTENACE FACILITY
2352 HASSELL ROAD

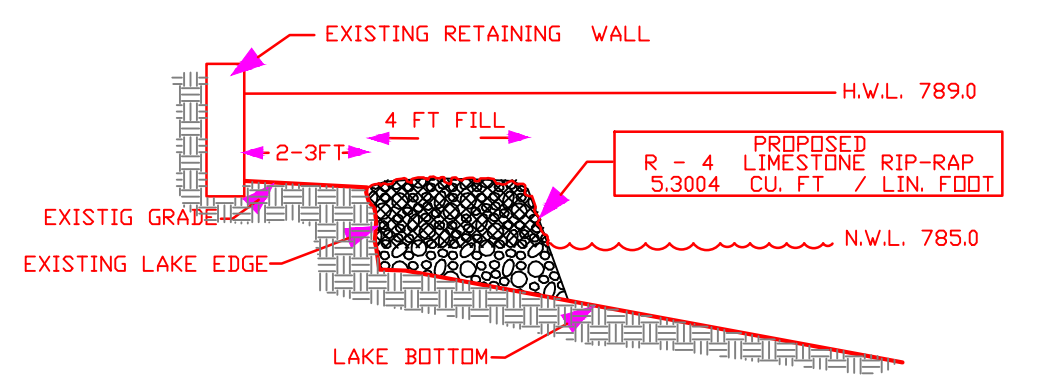
1665 W. HIGGINS ROAD
HOFFMAN ESTATES, ILLINOIS 60195
PHONE: (647)-865-7500
FAX: (647)865-7523



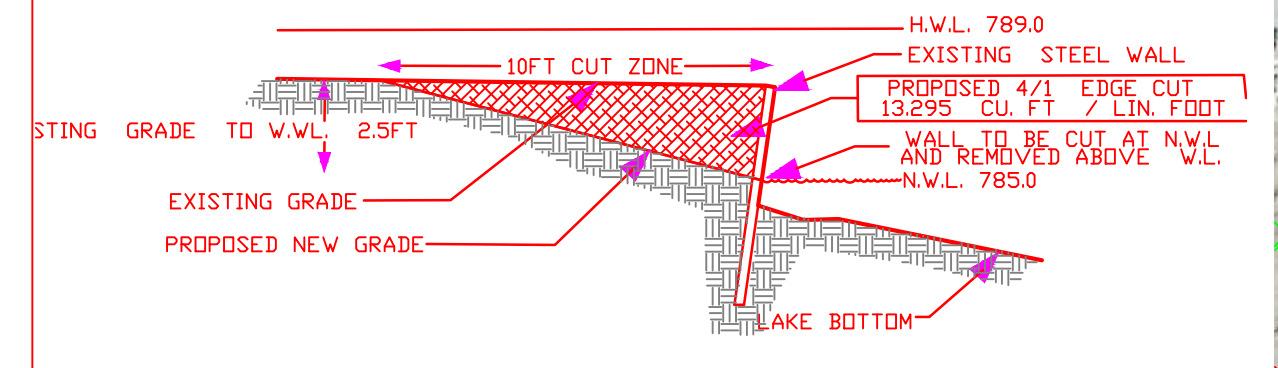
SCALE AS SHOWN'



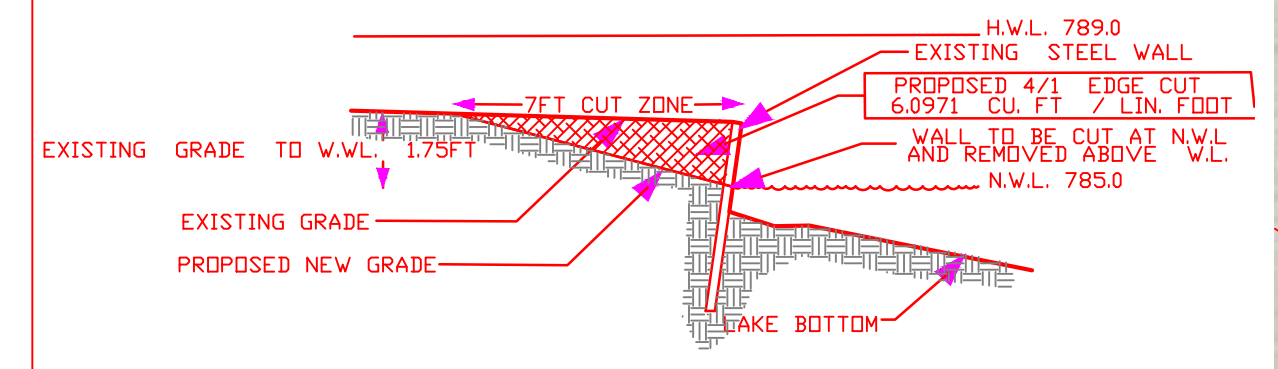
LAKE EDGE X SECTION #1
NO SCALE



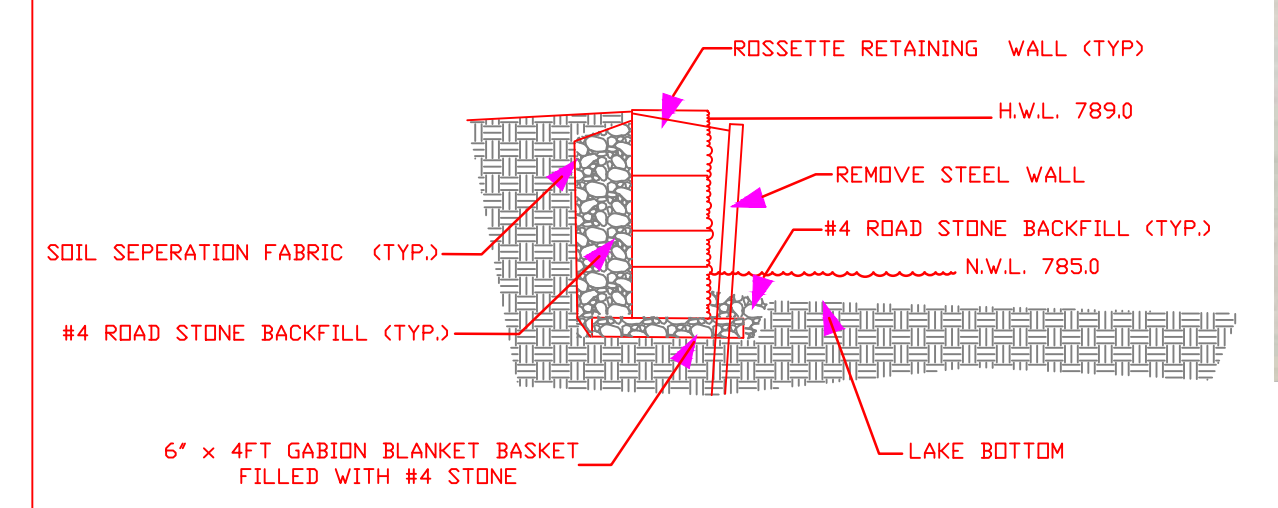
LAKE EDGE X SECTION #2
NO SCALE



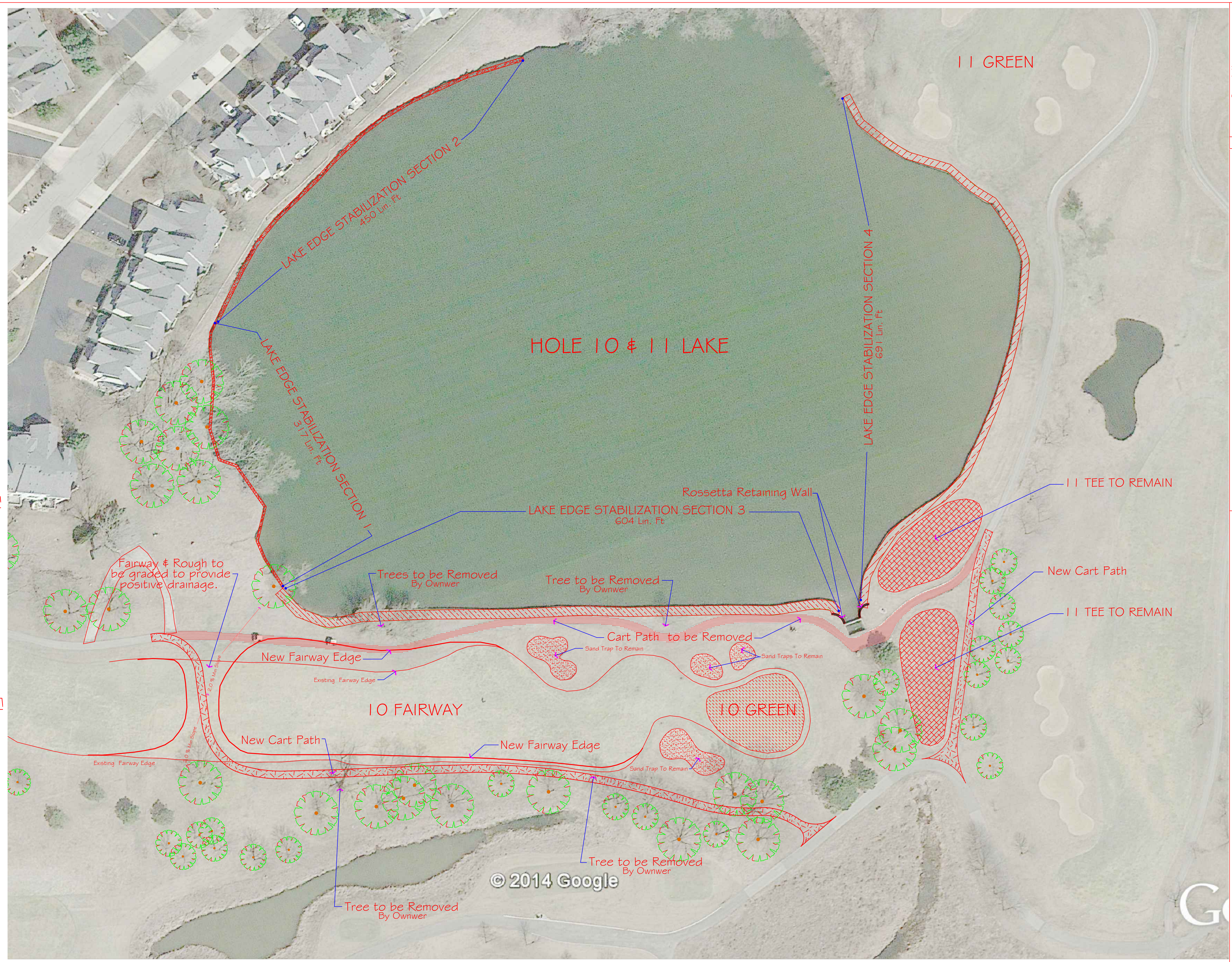
LAKE EDGE X SECTION #3
NO SCALE



LAKE EDGE X SECTION #4
NO SCALE



ROSSETTA WALL X SECTION
NO SCALE



HOLE 10 SHORELINE STABILIZATION PLAN
SCALE 1" = 50 FT

No.	Description	Date
1	ISSUED FOR REVIEW	09/13/2014
2	ISSUED FOR BID	

BRIDGES OF POPLAR CREEK C.C.
HOLE 10 LAKE STABILIZATION PROJECT

1685 W. HIGGINS ROAD
HOFFMAN ESTATES, ILLINOIS 60195
PHONE: (847)-685-7500
FAX: (847)-865-7523

HOFFMAN ESTATES PARK DISTRICT

SCALE AS SHOWN'
1 OF 1