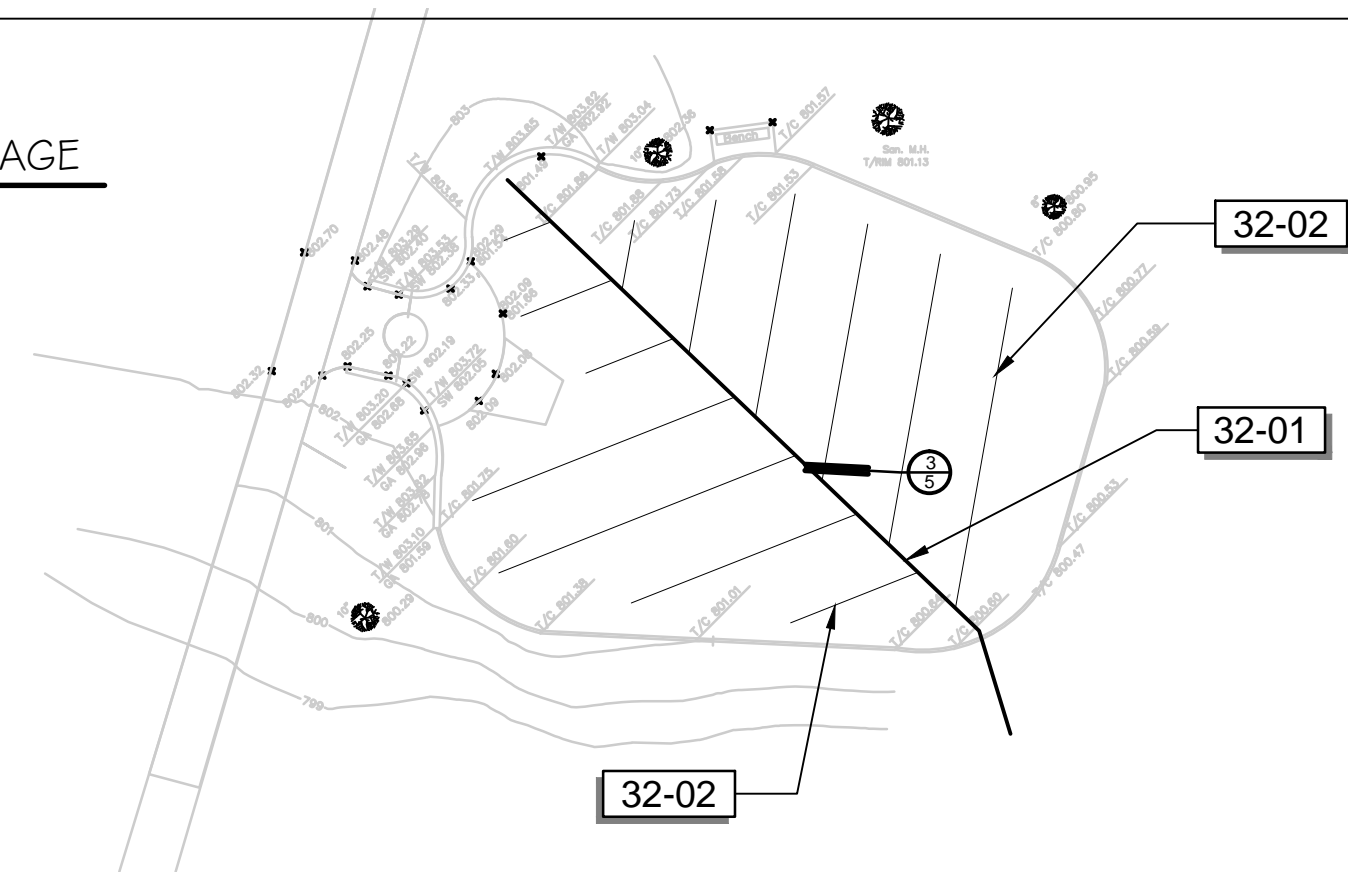
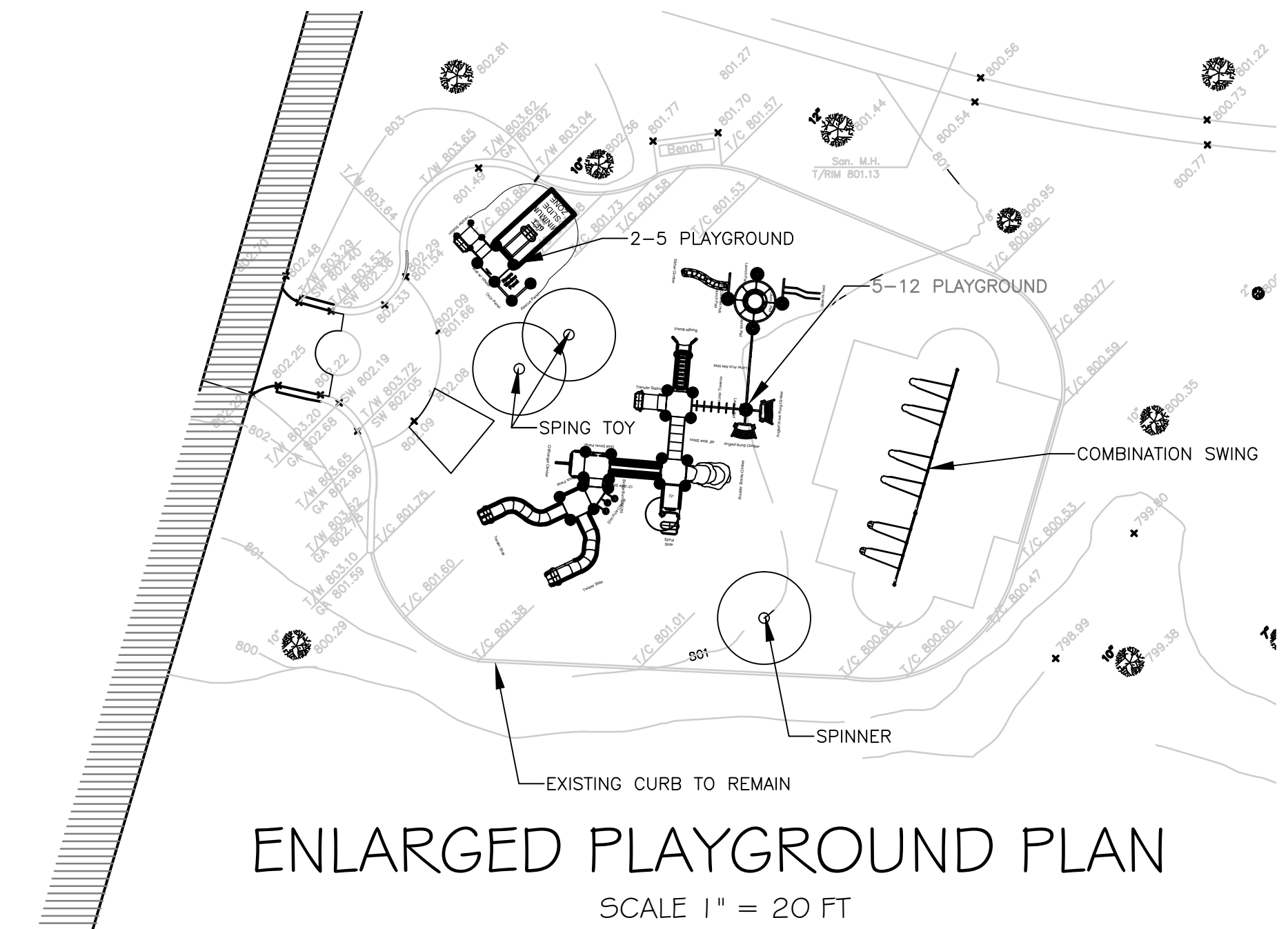


REFERENCE NOTES SCHEDULE VICTORIA PG 2017 DRAINAGE

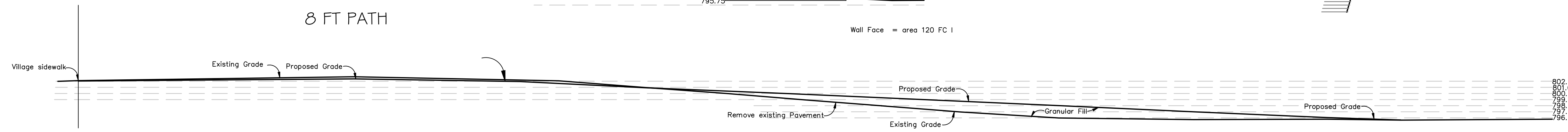
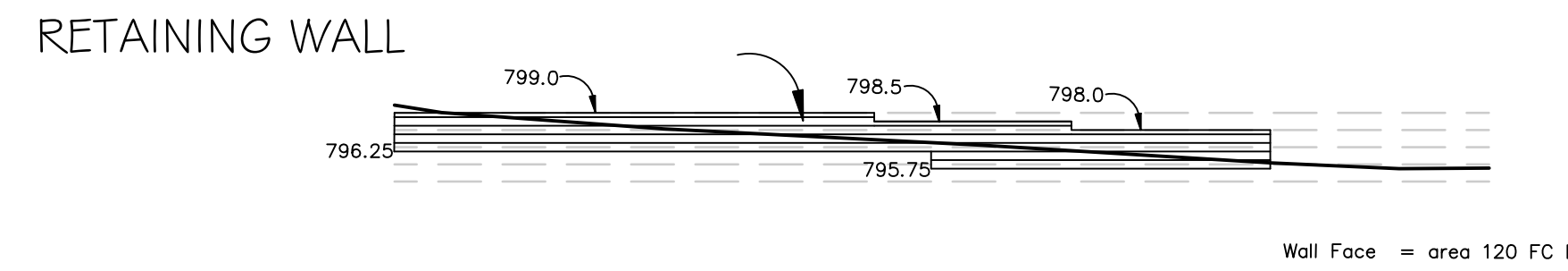
SYMBOL	DESCRIPTION	QTY	DETAIL
32-01	4" ROUND PERF. DRAIN TILE	119 lf	
32-02	6" PERF. FLAT PIPE	399 lf	
SYMBOL	DESCRIPTION	QTY	DETAIL
D-103	SAW CUT EXISTING CONCRETE	9 lf	



VICTORIA SOUTH PLAYGROUND DRAINAGE PLAN
SCALE 1" = 30 FT



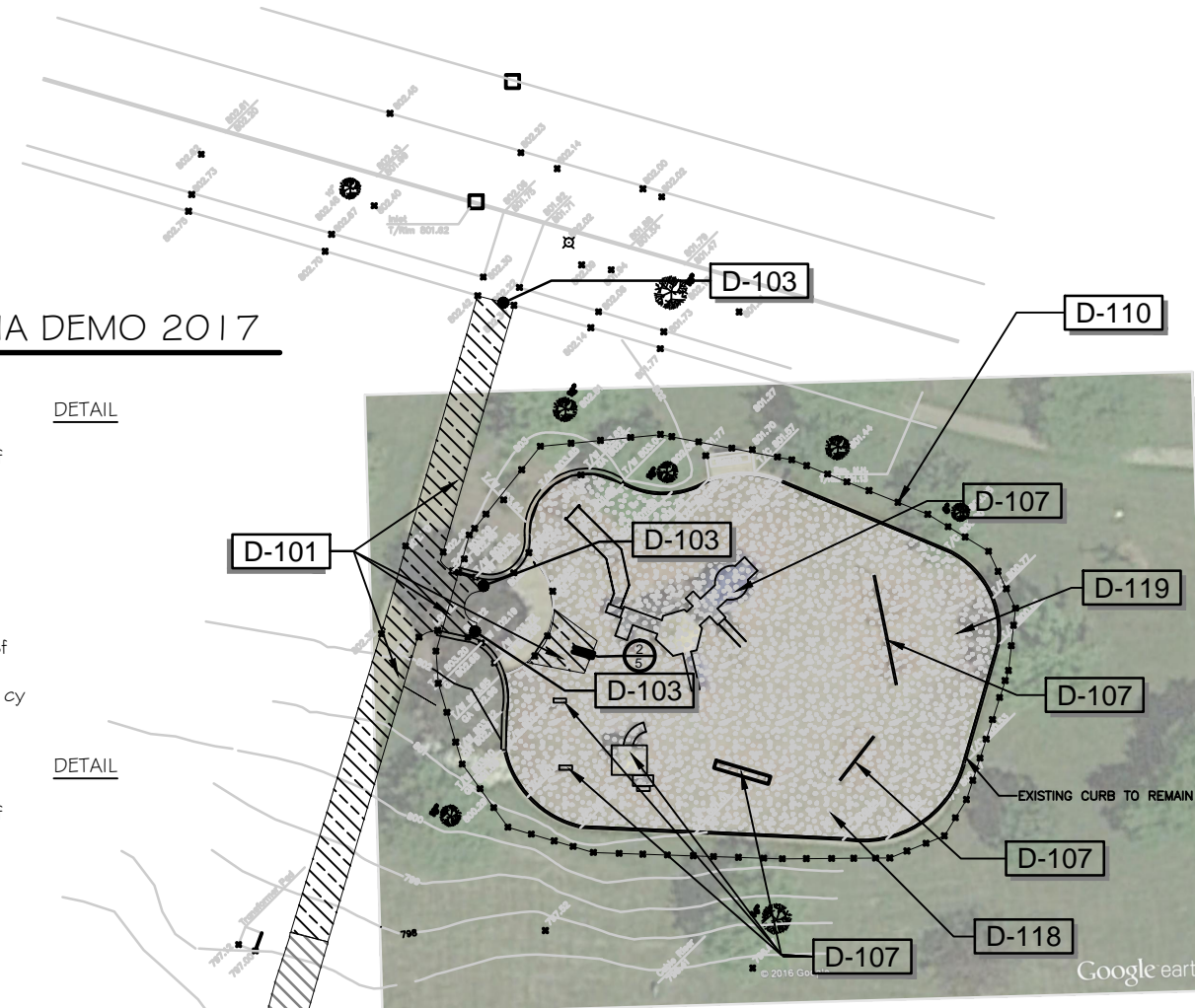
ENLARGED PLAYGROUND PLAN
SCALE 1" = 20 FT



VICTORIA SOUTH PATH & WALL X- SECTIONS
SCALE 1" = 10 FT

REFERENCE NOTES SCHEDULE VICTORIA DEMO 2017

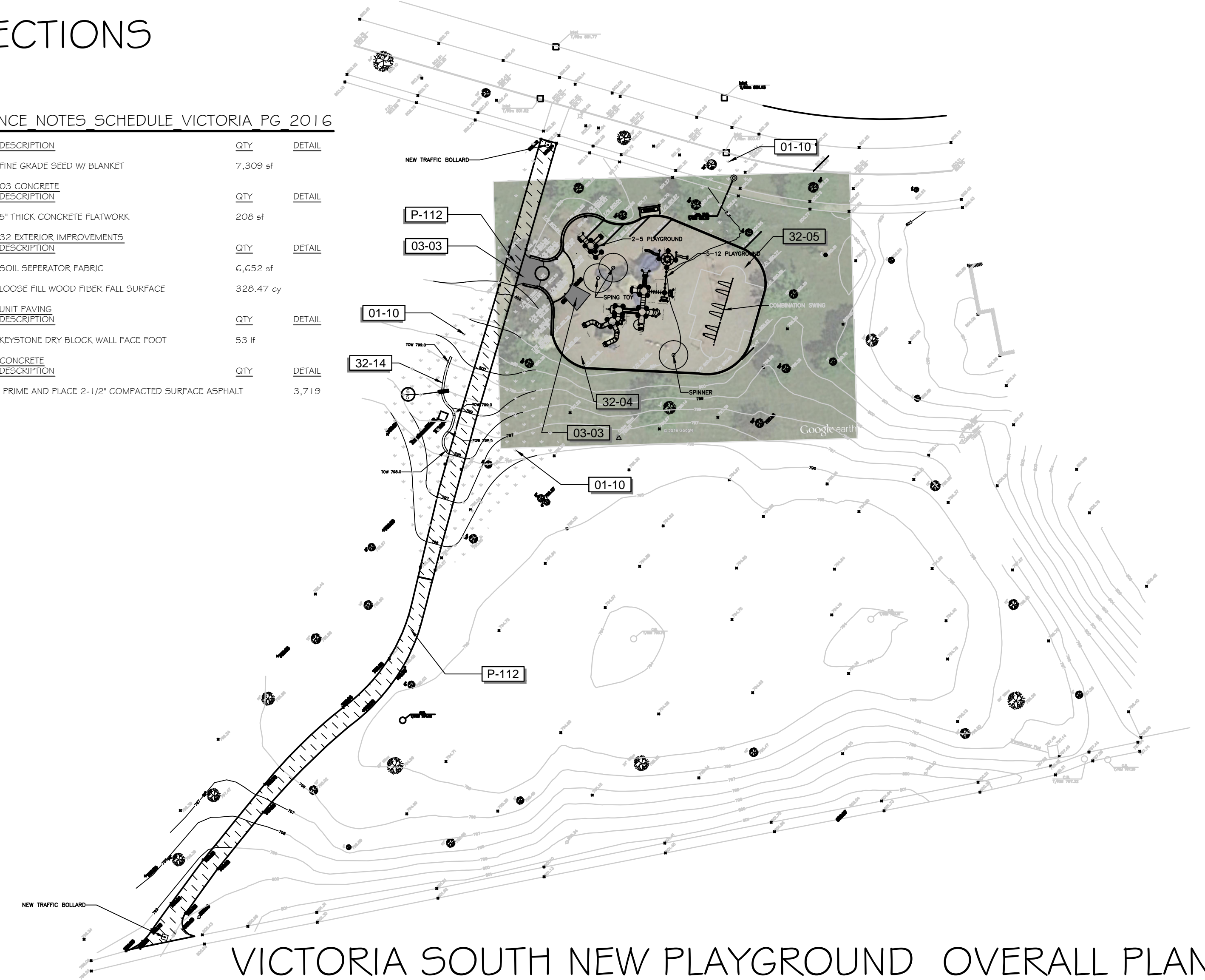
SYMBOL	DESCRIPTION	QTY	DETAIL
D-101	REMOVE EXISTING CONCRETE FLATWORK	1,334 sf	
D-103	SAW CUT EXISTING CONCRETE	20 lf	
D-107	REMOVE EXISTING PLAYGROUND EQUIPMENT		
D-110	INSTALL AND MAINTAIN PROTECTION FENCE	348 lf	
D-118	REMOVE FILTER FABRIC	6,652 sf	
D-119	REMOVE EXISTING LOOSE FILL WOOD FIBER	246.35 cy	
SYMBOL	DESCRIPTION	QTY	DETAIL
P-118	2" GRIND MINIMUM	1,962 sf	
P-120	REMOVE EXISTING ASPHALT	482 sf	



VICTORIA SOUTH PLAYGROUND DEMO PLAN
SCALE 1" = 40 FT

REFERENCE NOTES SCHEDULE VICTORIA PG 2016

SYMBOL	DESCRIPTION	QTY	DETAIL
01-10	FINE GRADE SEED W/ BLANKET	7,309 sf	
03-03	5" THICK CONCRETE FLATWORK	209 sf	
32-04	SOIL SEPARATOR FABRIC	6,652 sf	
32-05	LOOSE FILL WOOD FIBER FALL SURFACE	328.47 cy	
32-14	KEYSTONE DRY BLOCK WALL FACE FOOT	53 lf	
P-112	PRIME AND PLACE 2-1/2" COMPACTED SURFACE ASPHALT	3,719 sf	



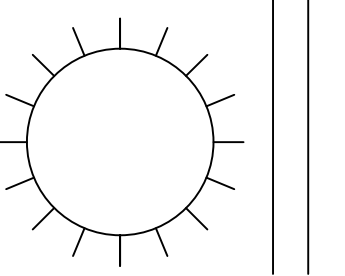
VICTORIA SOUTH NEW PLAYGROUND OVERALL PLAN
SCALE 1" = 40 FT

No.	Description	Date
1	ISSUED FOR REVIEW	12/20/2016
2	ISSUED FOR BID	1/20/2017

PLAYGROUND IMPROVEMENTS 2017
VICTORIA PARK PARK
WAINSFORD DRIVE

1685 W. HIGGINS ROAD
HOFFMAN ESTATES, ILLINOIS 60195
PHONE: (847) 865-7500
FAX: (847) 865-7523

HOFFMAN ESTATES
PARK DISTRICT



SCALE AS SHOWN

REFERENCE NOTES SCHEDULE COLONY NEW PLAYGROUND

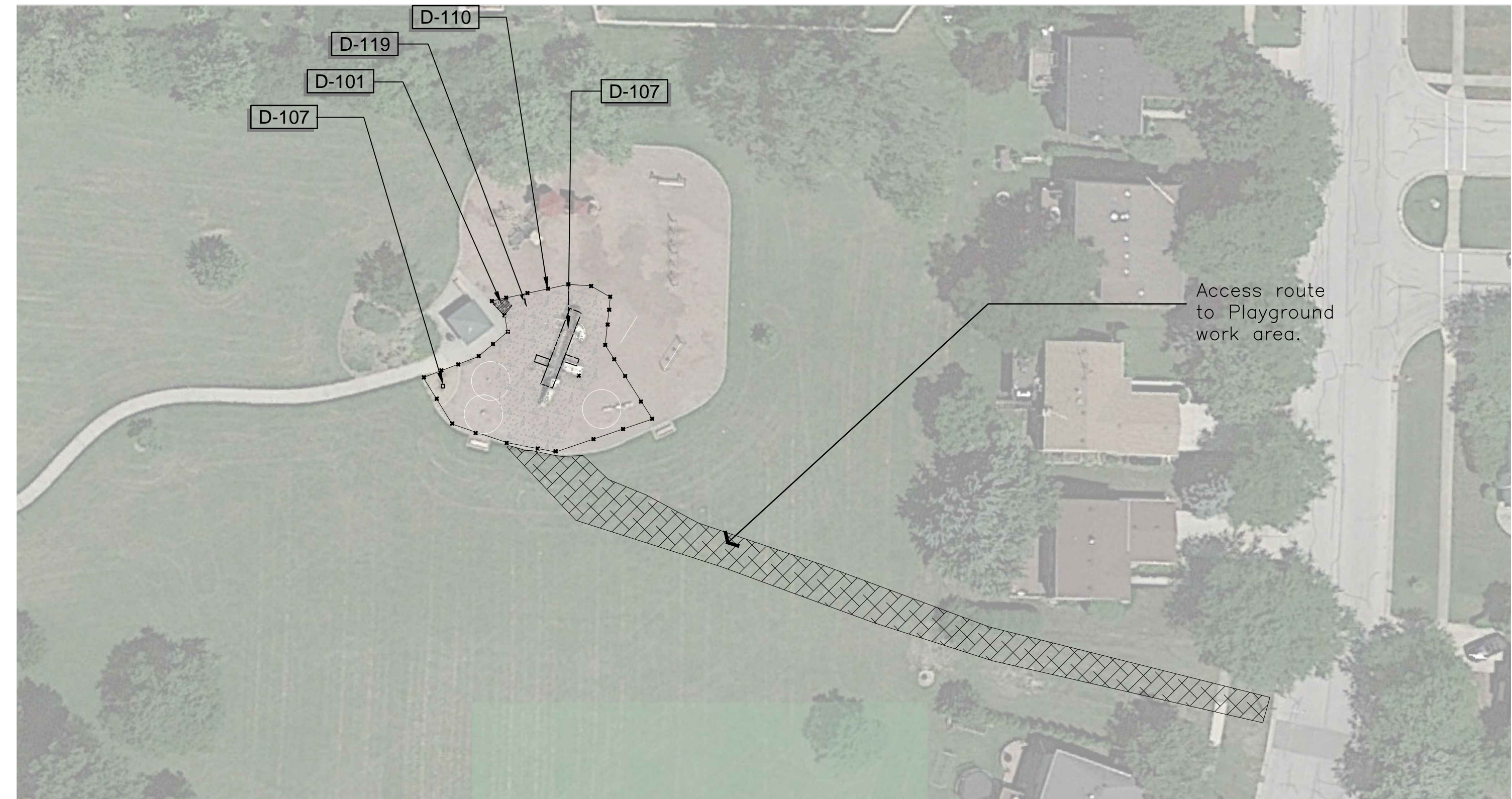
SYMBOL	DESCRIPTION	QTY	DETAIL
03-03	5 FT WIDE CONCRETE WALK 5" THICK	23 sf	
32 EXTERIOR IMPROVEMENTS			
32-05	LOOSE FILL WOOD FIBER FALL SURFACE	200 cy	
CURBS AND GUTTERS			
SYMBOL	DESCRIPTION	QTY	DETAIL
32-16	SUPPLY AND INSTALL SAND SURFACE	118 sf	



COLONY PLAYGROUND NEW EQUIPMENT PLAN
SCALE 1" = 20 FT

REFERENCE NOTES SCHEDULE COLONY DEMO

SYMBOL	DEMOLITION DESCRIPTION	QTY	DETAIL
D-101	REMOVE EXISTING CONCRETE FLATWORK	24 sf	
D-107	REMOVE EXISTING PLAYGROUND EQUIPMENT		
D-110	INSTALL AND MAINTAIN PROTECTION FENCE (MAINTAIN A MINIMUM OF 7FT BETWEEN ALL ADJACENT PLAYGROUND EQUIPMENT)	210 LF	
D-119	REMOVE EXISTING LOOSE FILL WOOD FIBER	64 cy	



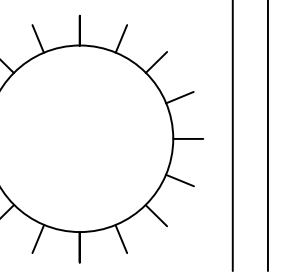
COLONY PLAYGROUND ACCESS & DEMO PLAN
SCALE 1" = 30 FT

No.	Description	Date
1	ISSUED FOR REVIEW	12/19/2016
2	ISSUED FOR BID	1/11/2017

PLAYGROUND IMPROVEMENTS 2017
COLONY PARK
5097 CHAMBERS

1685 W. HIGGINS ROAD
HOFFMAN ESTATES, ILLINOIS 60195
PHONE: (847) 885-7500
FAX: (847) 885-7523

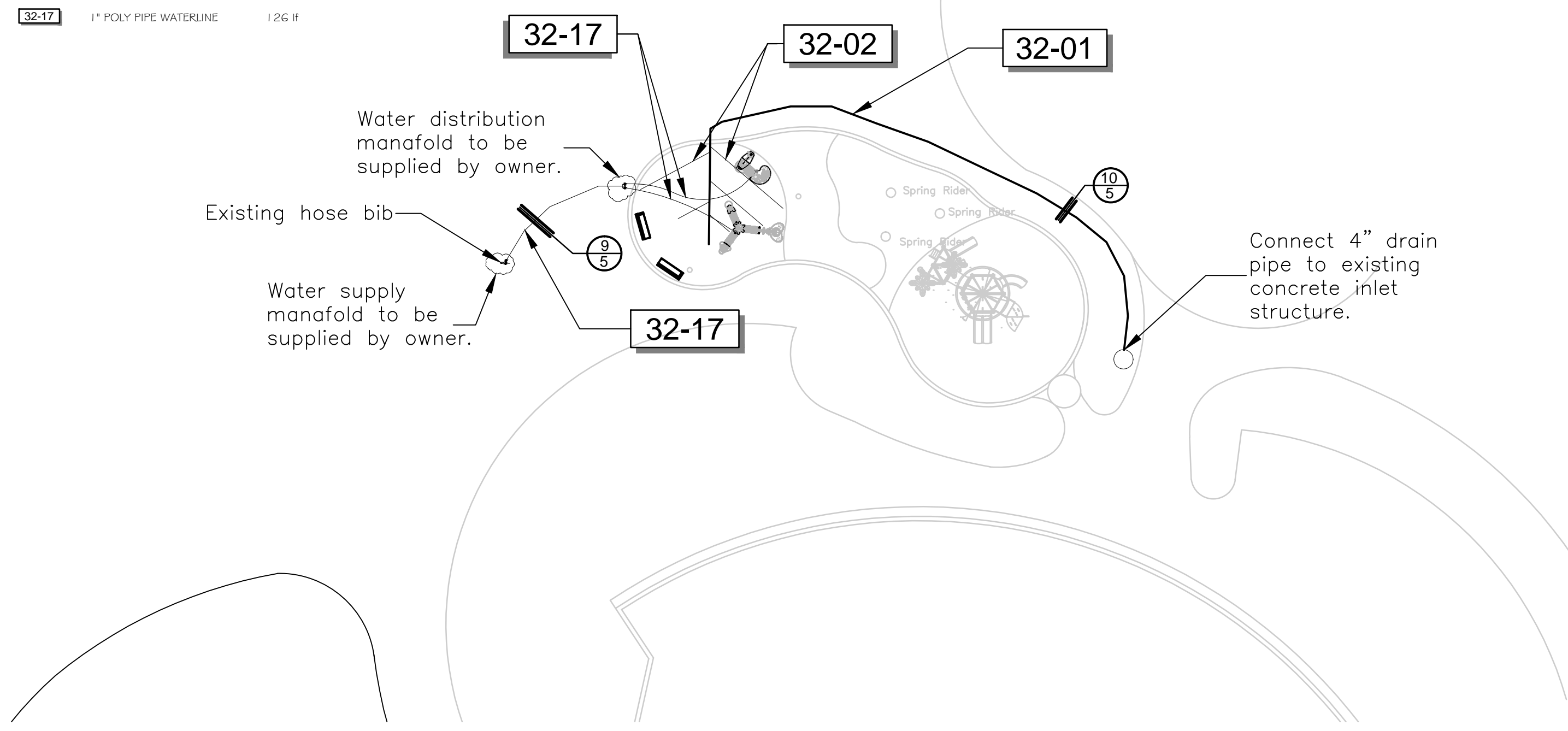
HOFFMAN ESTATES
PARK DISTRICT



SCALE AS SHOWN'

REFERENCE NOTES SCHEDULE SEASCAPE DRAINAGE

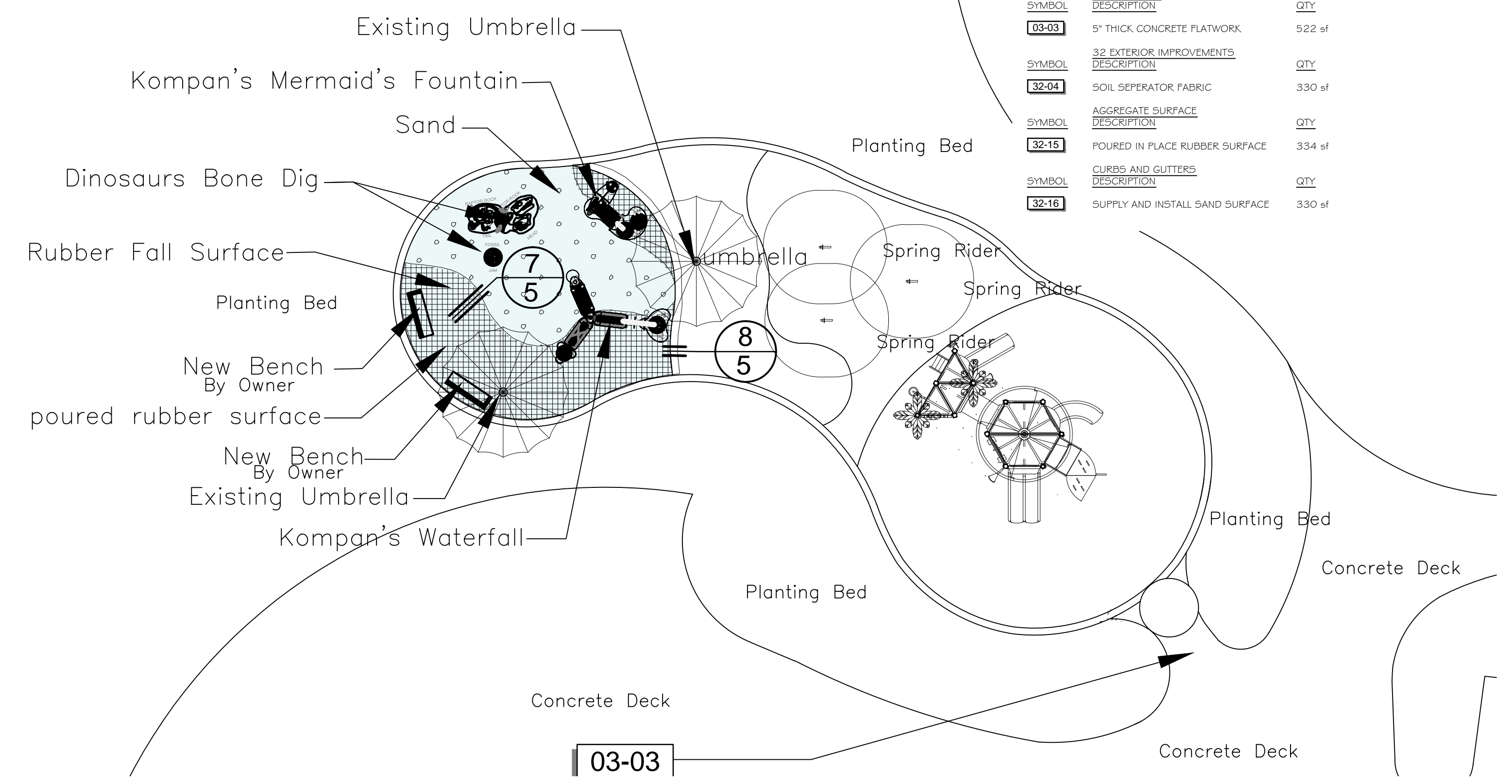
SYMBOL	32 EXTERIOR IMPROVEMENTS DESCRIPTION	QTY
32-01	4" ROUND PERF. DRAIN TILE	126 #
32-02	6" PERF. FLAT PIPE	59 #
SYMBOL	CURBS AND GUTTERS DESCRIPTION	QTY
32-17	1" POLY PIPE WATERLINE	126 #



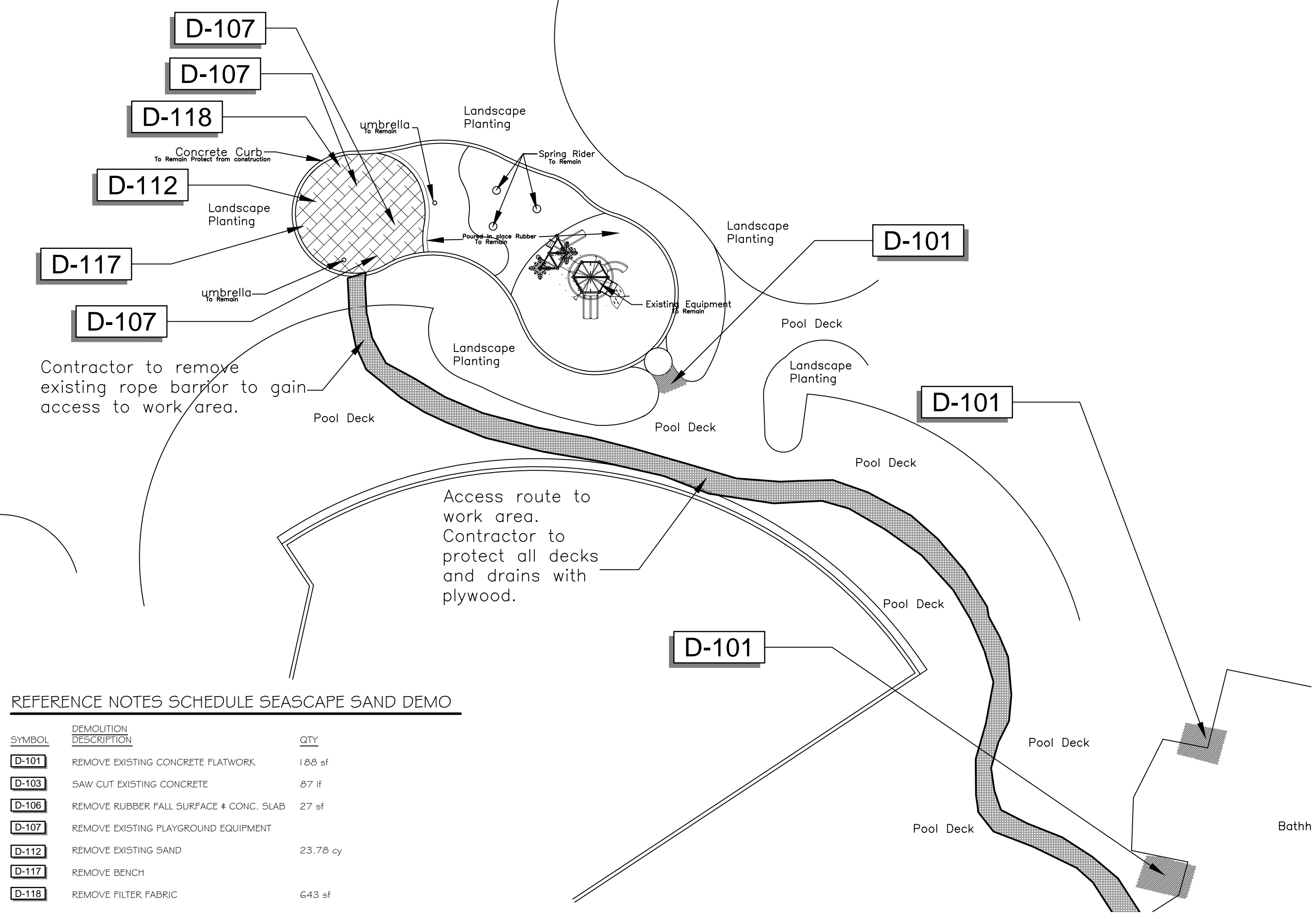
SEASCAPE SAND PG DRAINAGE PLAN
SCALE 1" = 20 FT

REFERENCE NOTES SCHEDULE SEASCAPE SAND NEW P

SYMBOL	DESCRIPTION	QTY
01-07	RUBBER FALL SURFACE SURFACE BIEGE	314 sf
SYMBOL	03 CONCRETE DESCRIPTION	QTY
03-03	5" THICK CONCRETE FLATWORK	522 sf
SYMBOL	32 EXTERIOR IMPROVEMENTS DESCRIPTION	QTY
32-04	SOIL SEPARATOR FABRIC	330 sf
SYMBOL	AGGREGATE SURFACE DESCRIPTION	QTY
32-15	POURED IN PLACE RUBBER SURFACE	334 sf
SYMBOL	CURBS AND GUTTERS DESCRIPTION	QTY
32-16	SUPPLY AND INSTALL SAND SURFACE	330 sf



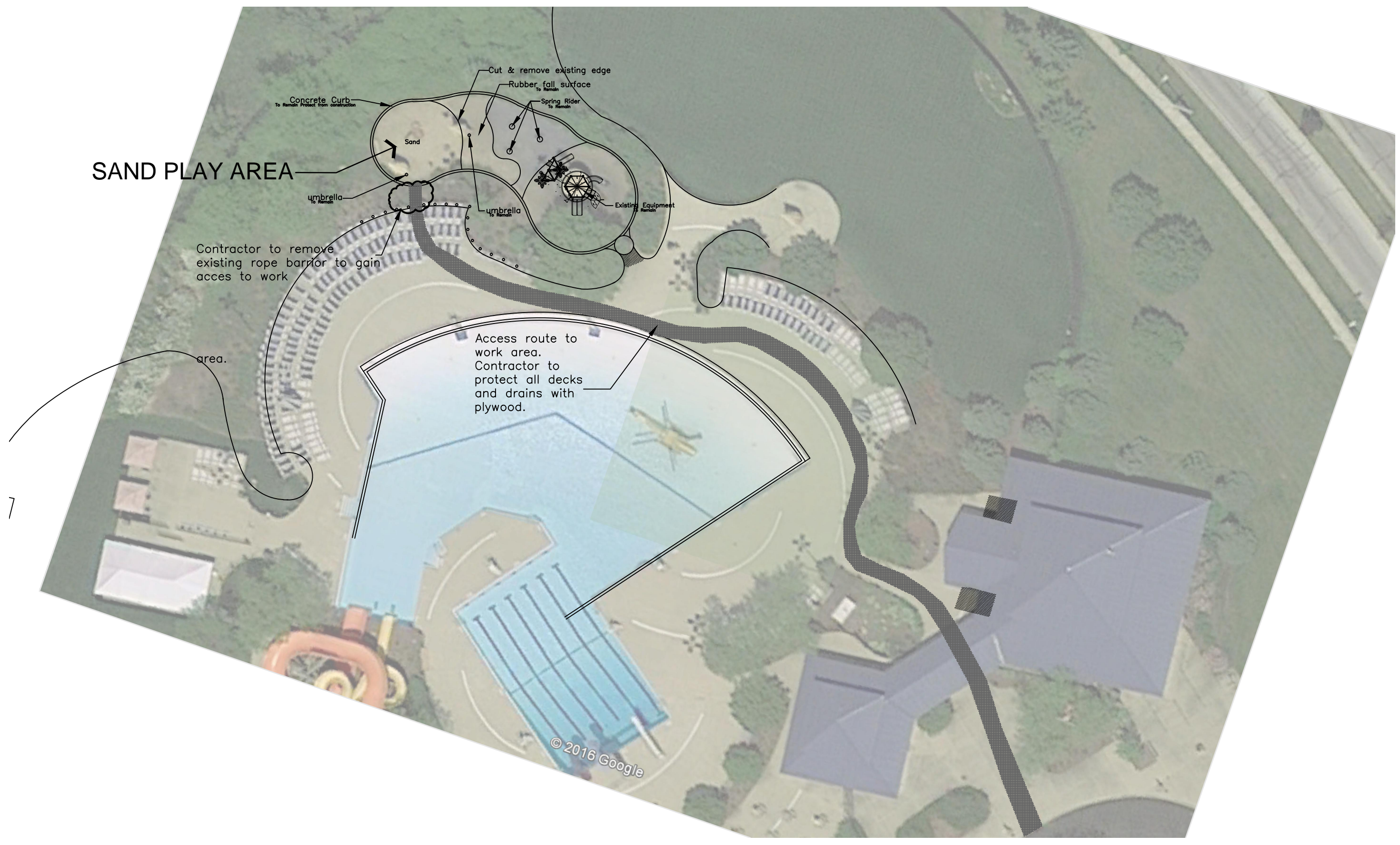
SEASCAPE SAND PG NEW EQUIPMENT PLAN
SCALE 1" = 10 FT



REFERENCE NOTES SCHEDULE SEASCAPE SAND DEMO

SYMBOL	DEMOLITION DESCRIPTION	QTY
D-101	REMOVE EXISTING CONCRETE FLATWORK	188 sf
D-103	SAW CUT EXISTING CONCRETE	87 #
D-106	REMOVE RUBBER FALL SURFACE 4 CONC. SLAB	27 sf
D-107	REMOVE EXISTING PLAYGROUND EQUIPMENT	
D-112	REMOVE EXISTING SAND	23.79 cy
D-117	REMOVE BENCH	
D-118	REMOVE FILTER FABRIC	643 sf

SEASCAPE SAND PG DEMO PLAN
SCALE 1" = 20 FT



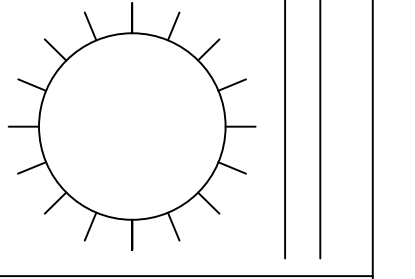
SEASCAPE SAND PG ACCESS PLAN
SCALE 1" = 30 FT

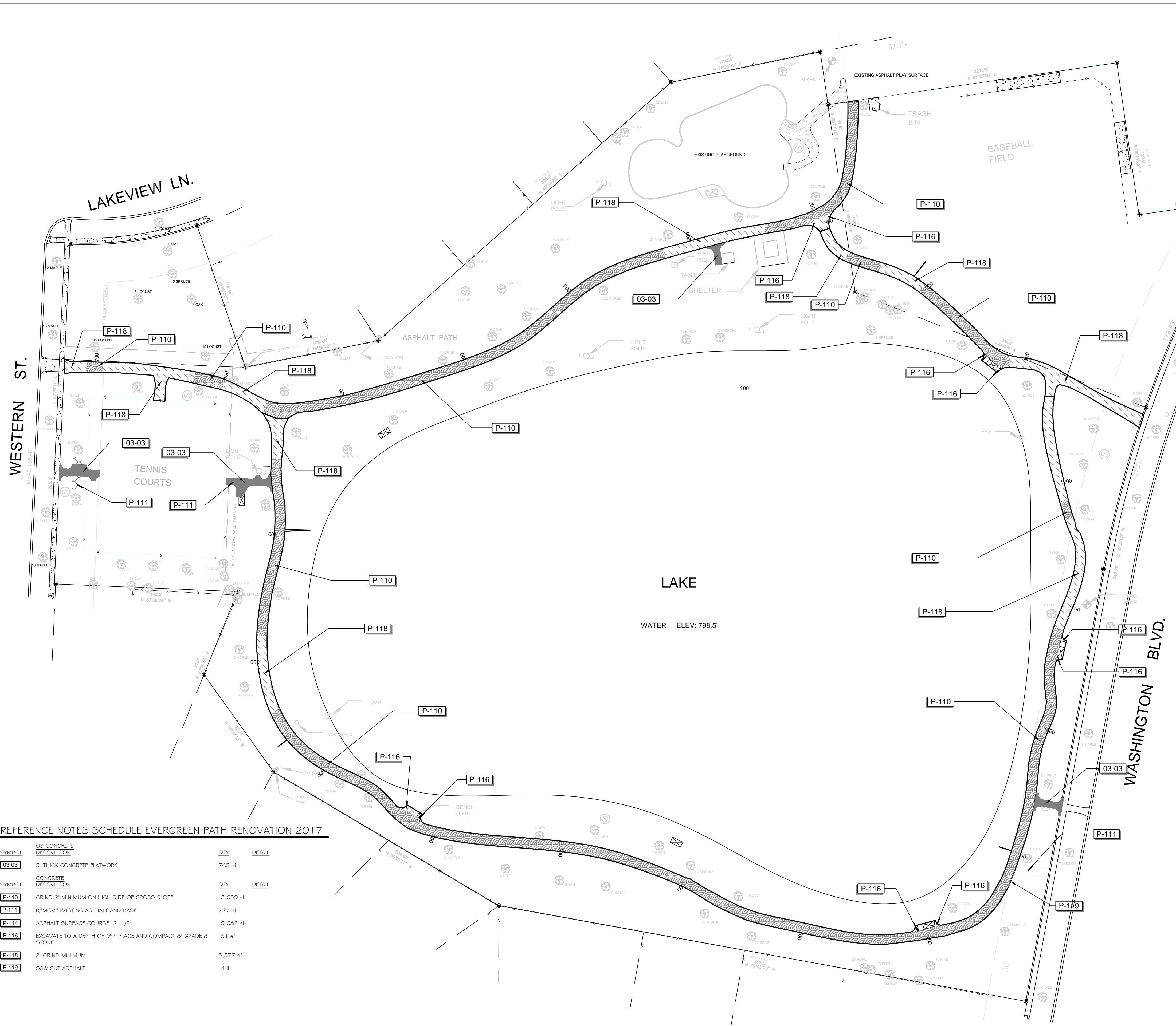
No.	Description	Date
1	ISSUED FOR REVIEW	12/19/2016
2	ISSUED FOR BID	1/12/2017

PLAYGROUND IMPROVEMENTS 2017
SEASCAPE AQUATIC PARK
1300 MOONLAKE BLVD.

1685 W. HIGGINS ROAD
HOFFMAN ESTATES, ILLINOIS 60149
PHONE: (847)-885-7500
FAX: (847)885-7523

HOFFMAN ESTATES
PARK DISTRICT





REFERENCE NOTES SCHEDULE EVERGREEN PATH RENOVATION 2017

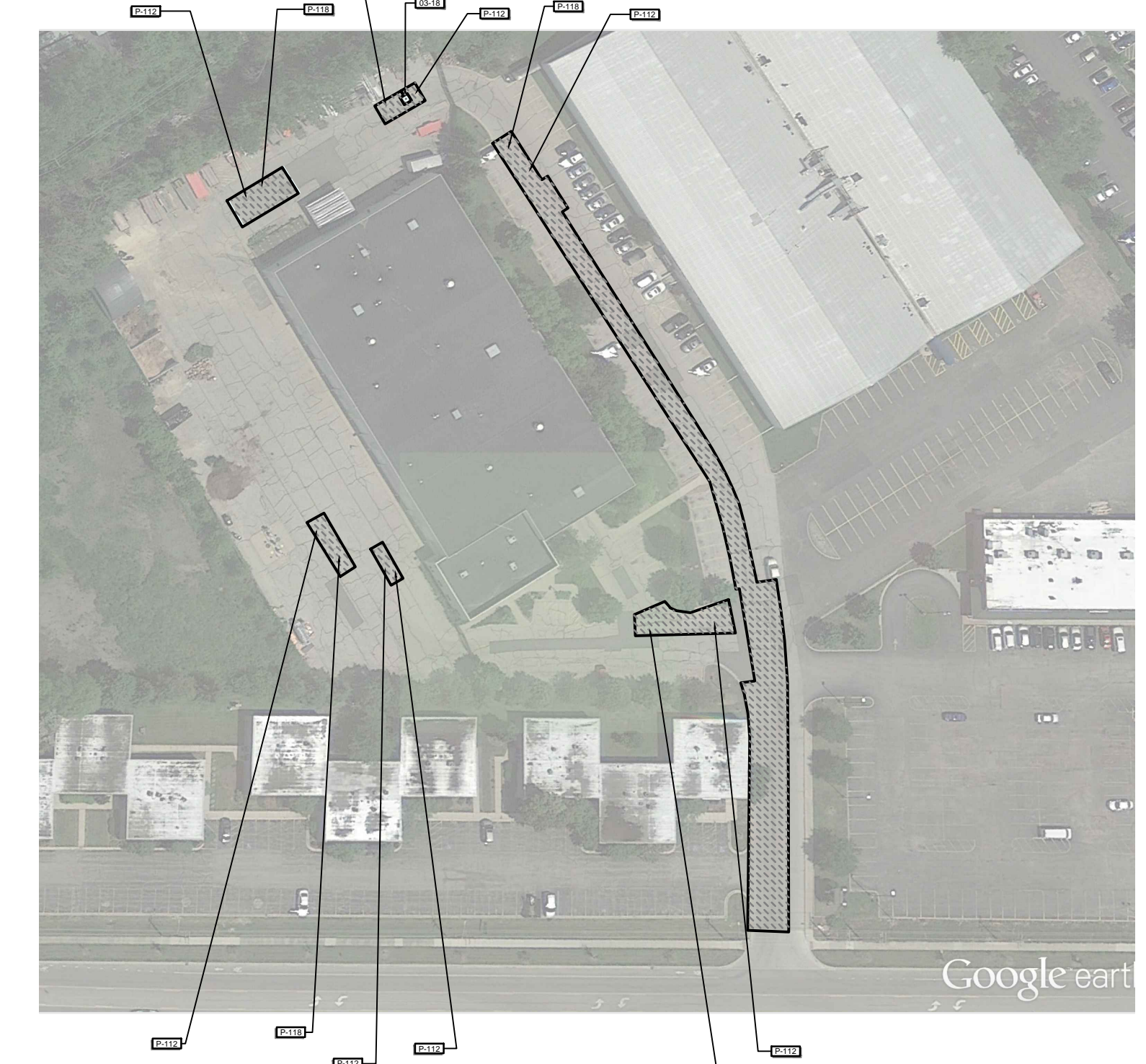
SYMBOL	CONCRETE DESCRIPTION	QTY	DETAIL
03-03	5" THICK CONCRETE FLATWORK	765 sf	
SYMBOL	CONCRETE DESCRIPTION	QTY	DETAIL
P-110	GRIND 2" MINIMUM ON HIGH SIDE OF CROSS SLOPE	13,059 sf	
P-111	REMOVE EXISTING ASPHALT AND BASE	727 sf	
P-114	ASPHALT SURFACE COURSE 2 - 1/2"	19,085 sf	
P-116	EXCAVATE TO A DEPTH OF 9" & PLACE AND COMPACT 8" GRADE 6 STONE	151 sf	
P-118	2" GRIND MINIMUM	5,577 sf	
P-119	SAW CUT ASPHALT	14 lf	

EVERGREEN PATH & WALKWAY REPAIR PLAN

SCALE 1" = 40 FT

REFERENCE NOTES SCHEDULE HASSELL ROAD PAVING

SYMBOL	CONCRETE DESCRIPTION	QTY	DETAIL
03-18	8" THICK CONCRETE FLATWORK	0.08 cy	
SYMBOL	CONCRETE DESCRIPTION	QTY	DETAIL
P-112	PRIME AND PLACE 2" COMPACTED SURFACE ASPHALT	16,688 sf	
P-118	2" GRIND MINIMUM	16,688 sf	

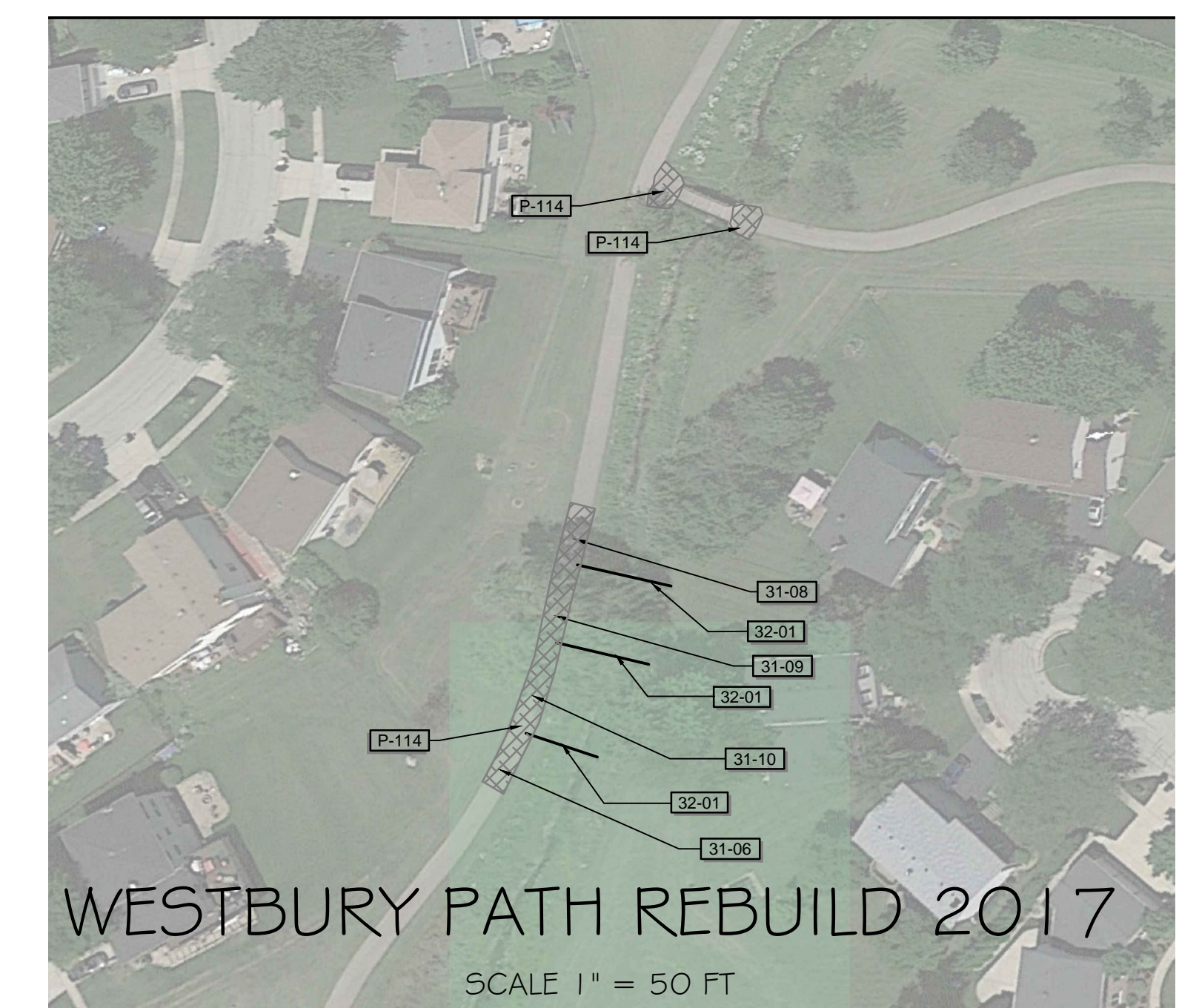


HASSELL ROAD MAINTENANCE PAVING

SCALE 1" = 100 FT

REFERENCE NOTES SCHEDULE WESTBURY PATH

SYMBOL	31 EARTHWORK DESCRIPTION	QTY	DETAIL
31-02	COMPACT & INSTALL GED TEXTILE FABRIC	1,025 sf	
31-03	PLACE 12" MIN. COMPACTED #4 ROAD STONE	37.97 cy	
31-04	PLACE 6" COMPACTED GRADE 6 STONE	18.98 cy	
SYMBOL	32 EXTERIOR IMPROVEMENTS DESCRIPTION	QTY	DETAIL
32-01	4" ROUND PERFORATED DRAIN TILE	102 lf	
SYMBOL	CONCRETE DESCRIPTION	QTY	DETAIL
P-114	ASPHALT SURFACE COURSE 2 - 1/2"	500 sf	



WESTBURY PATH REBUILD 2017

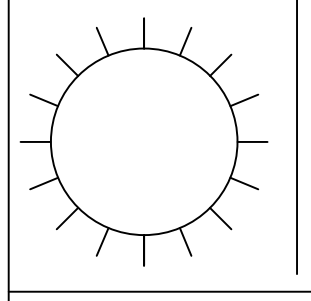
SCALE 1" = 50 FT

No.	Description	Date
1	ISSUED FOR REVIEW	01/19/2017
2	ISSUED FOR BID	01/17/2017

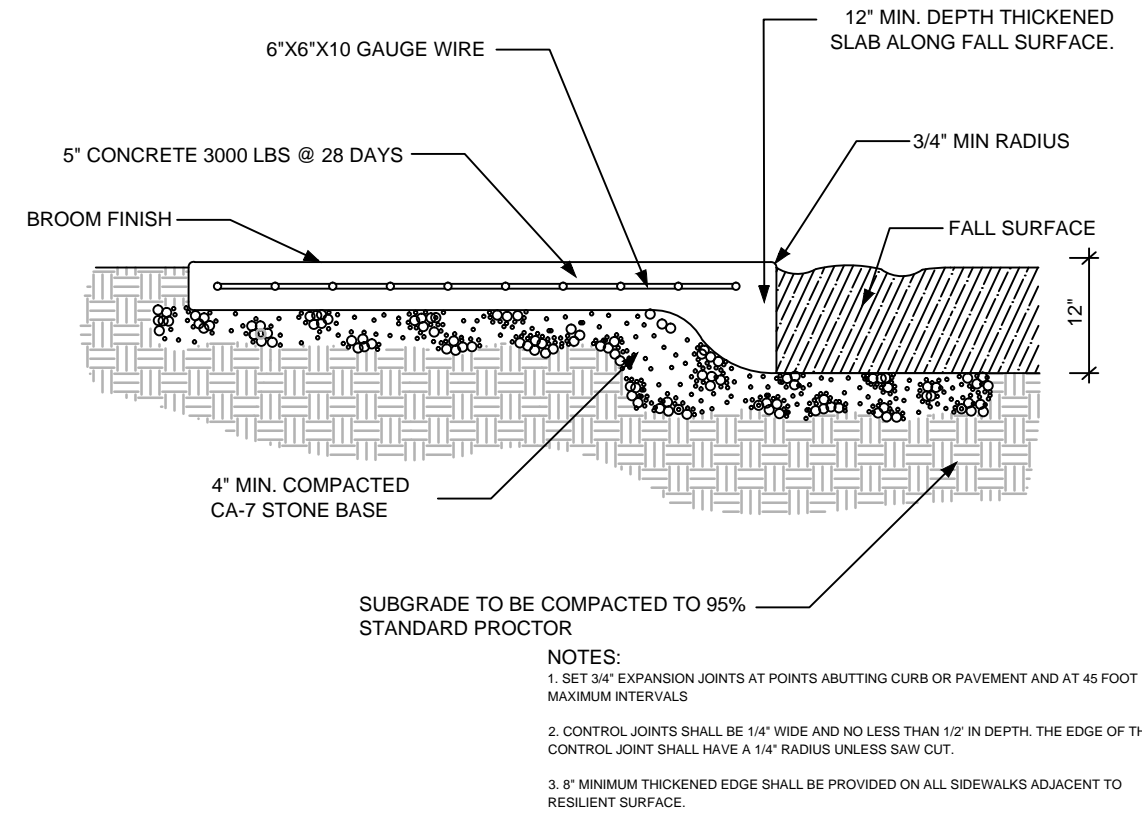
PAVING IMPROVEMENTS 2017
EVERGREEN PARK & HASSELL MAINTENANCE
WESTBURY PARK

1685 W. HIGGINS ROAD
HOFFMAN ESTATES, ILLINOIS 60195
PHONE: (847)-885-7500
FAX: (847)885-7523

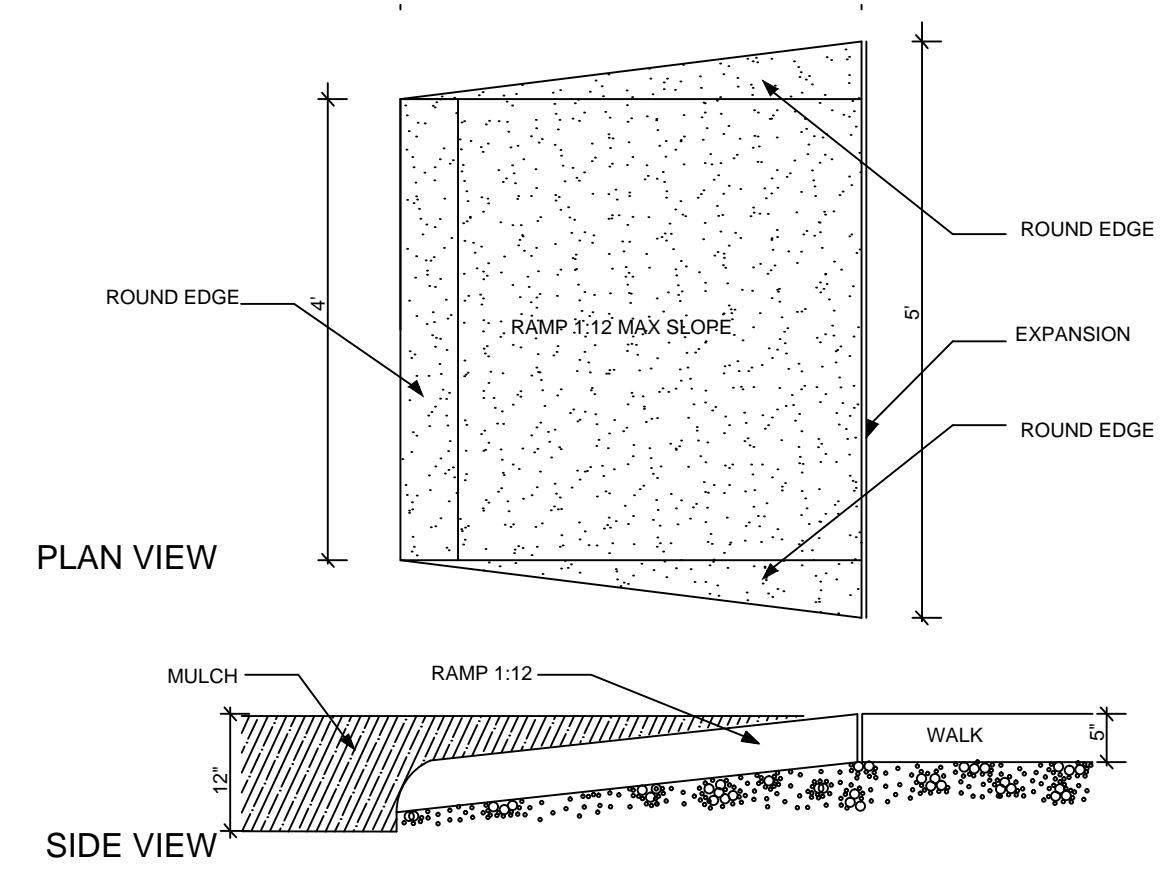
HOFFMAN ESTATES
PARK DISTRICT



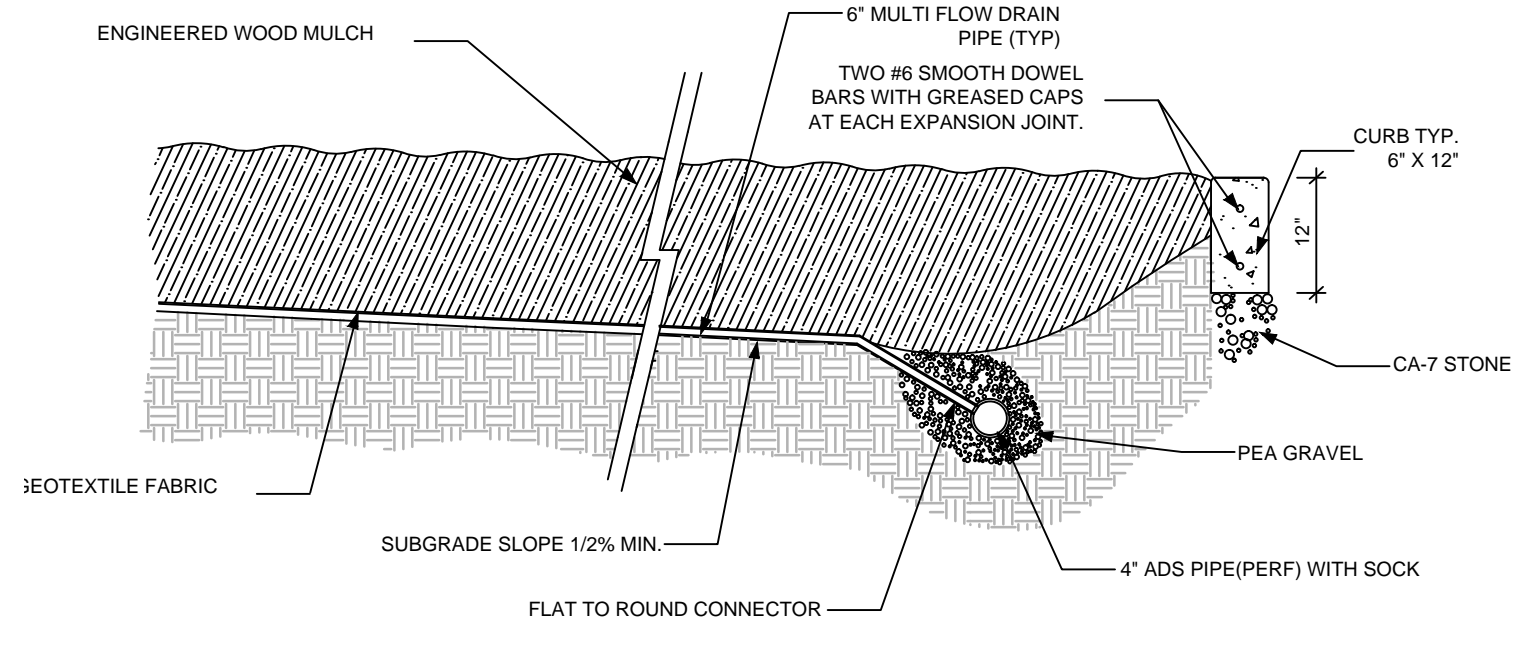
SCALE AS SHOWN'



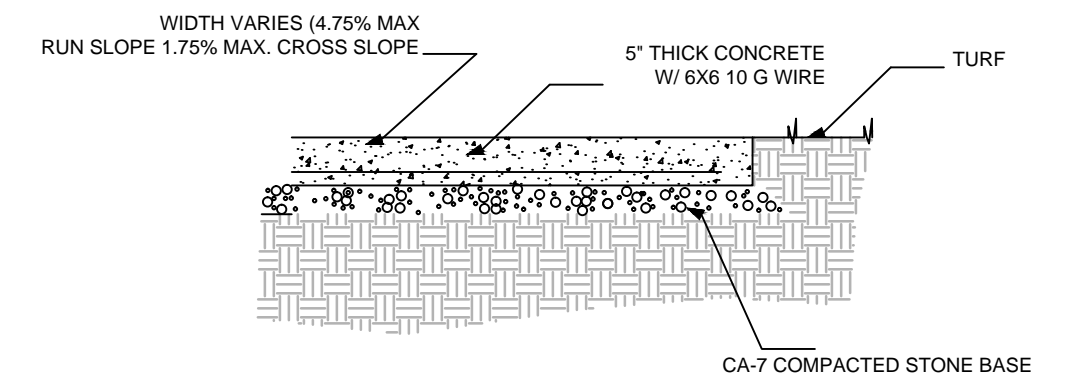
1
5 **SIDEWALK DETAIL AT PLAYGROUND**
No Scale



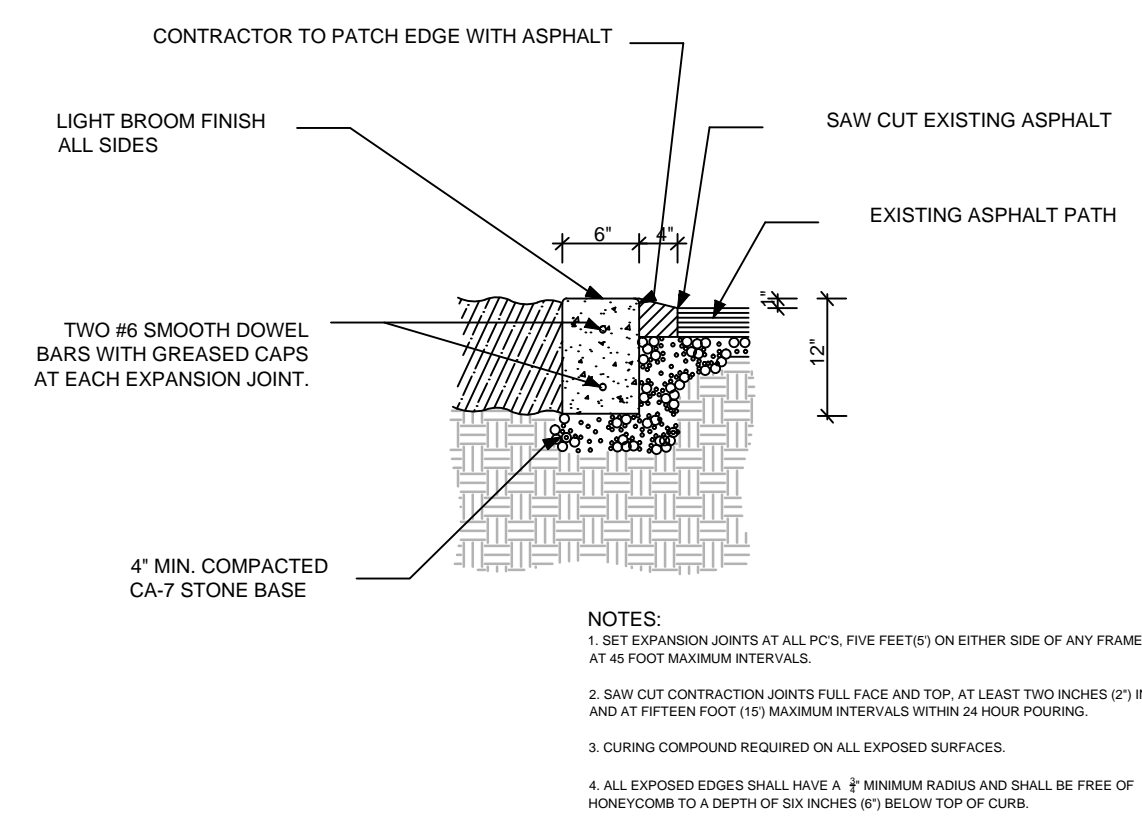
2
5 **RAMP INTO PLAYGROUND DETAIL**
No Scale



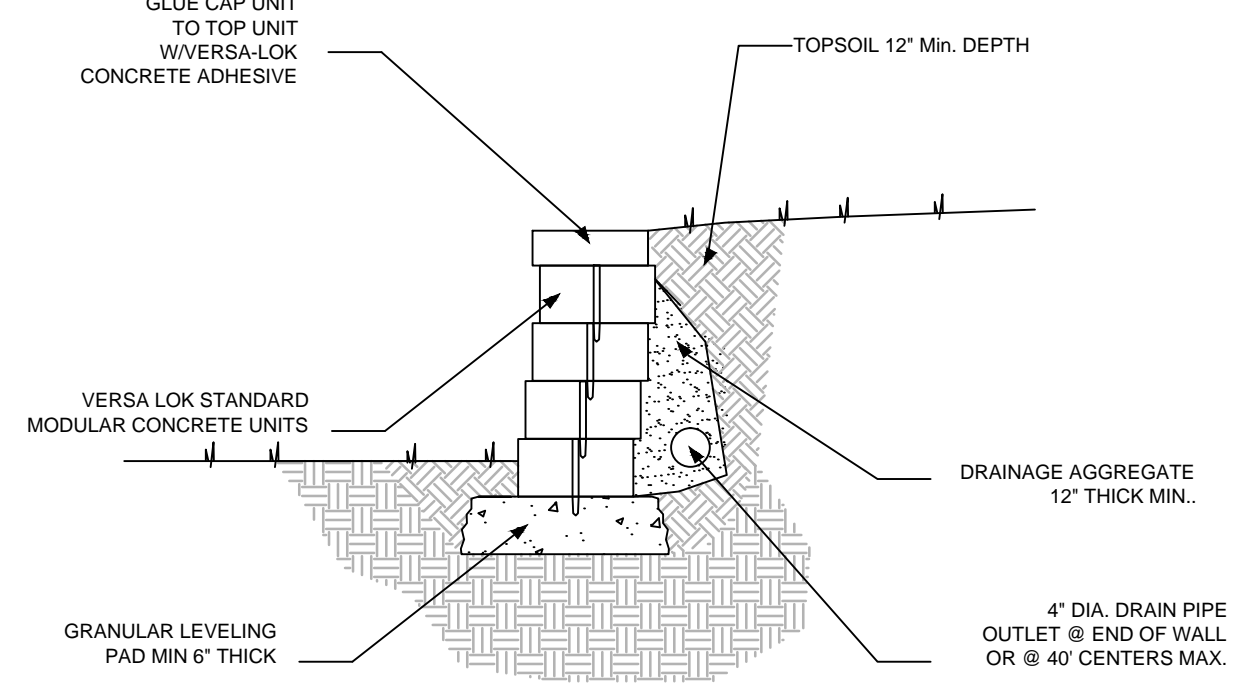
3
5 **TYPICAL PLAYGROUND DRAINAGE DETAIL**
No Scale



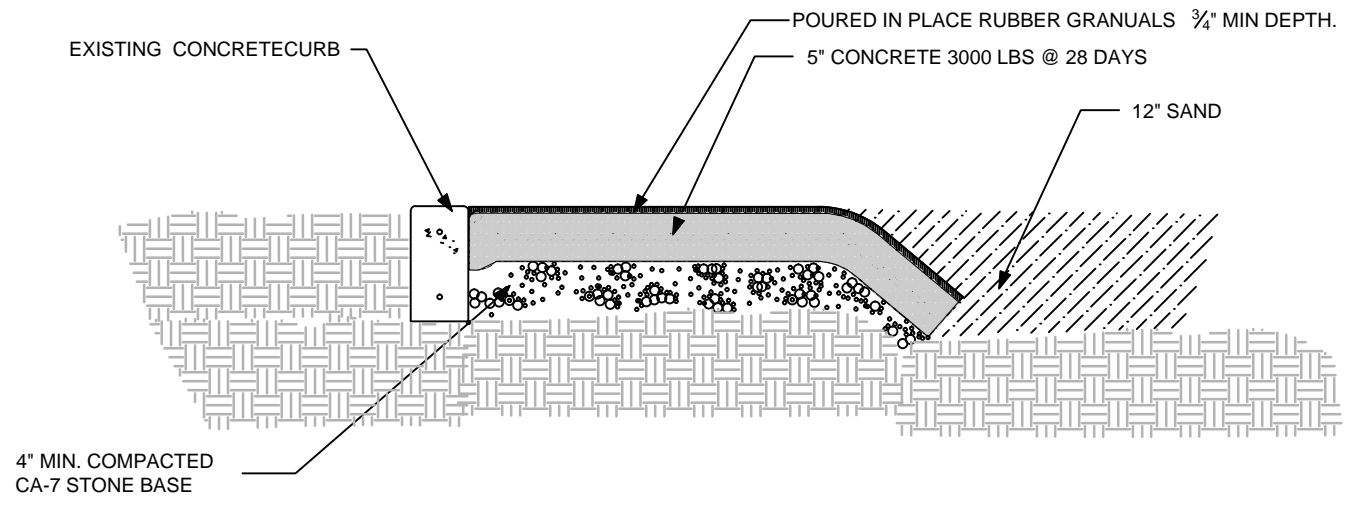
4
5 **CONCRETE SLAB DETAIL**
No Scale



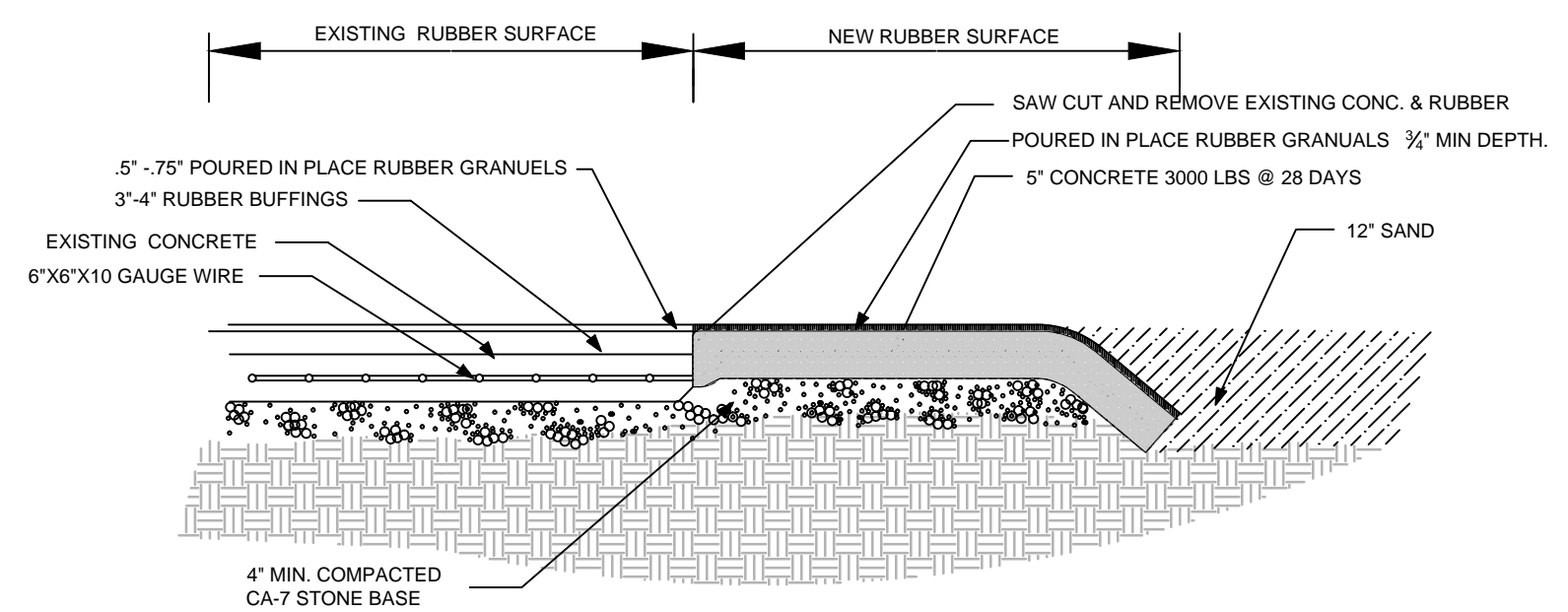
5
5 **6' CONCRETE CURB AT PLAYGROUND DETAIL**
No Scale



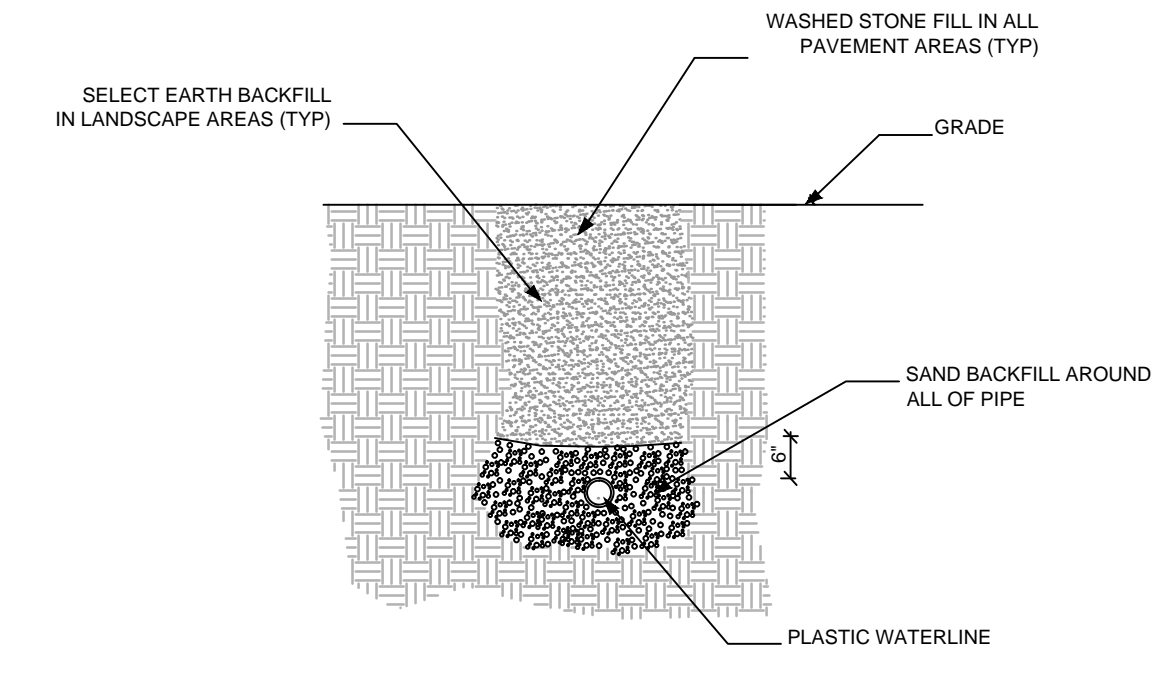
6
5 **RETAINING WALL DETAIL**
No Scale



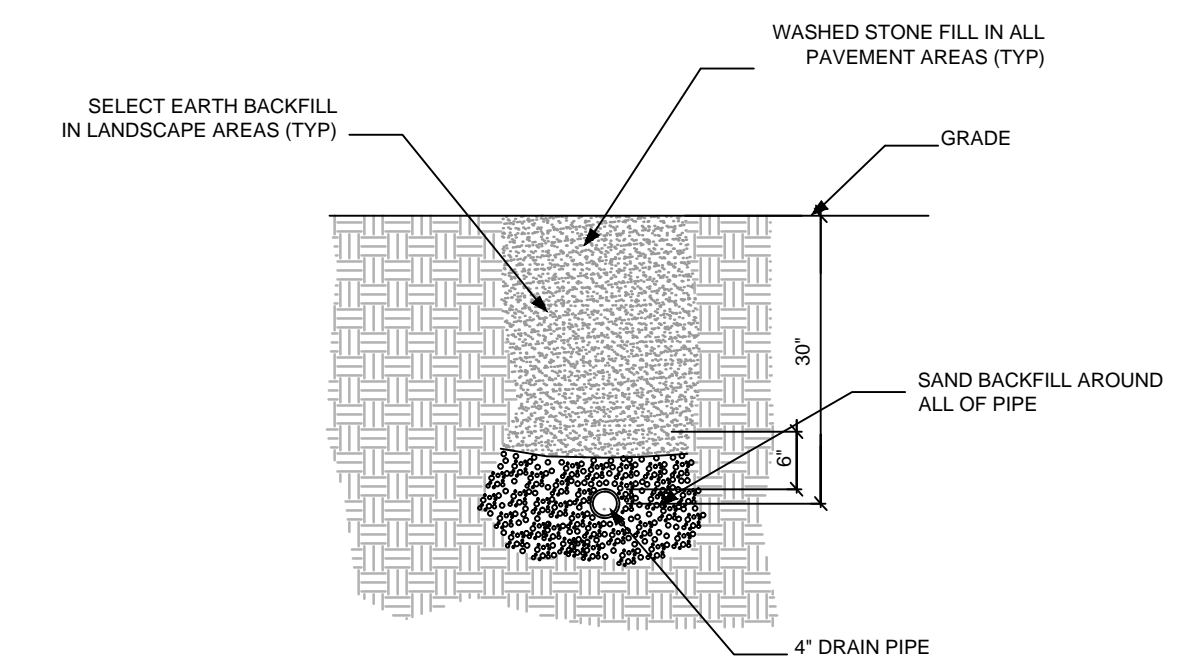
7
5 **POURED IN PLACE RUBBER TO SAND DETAIL**
No Scale



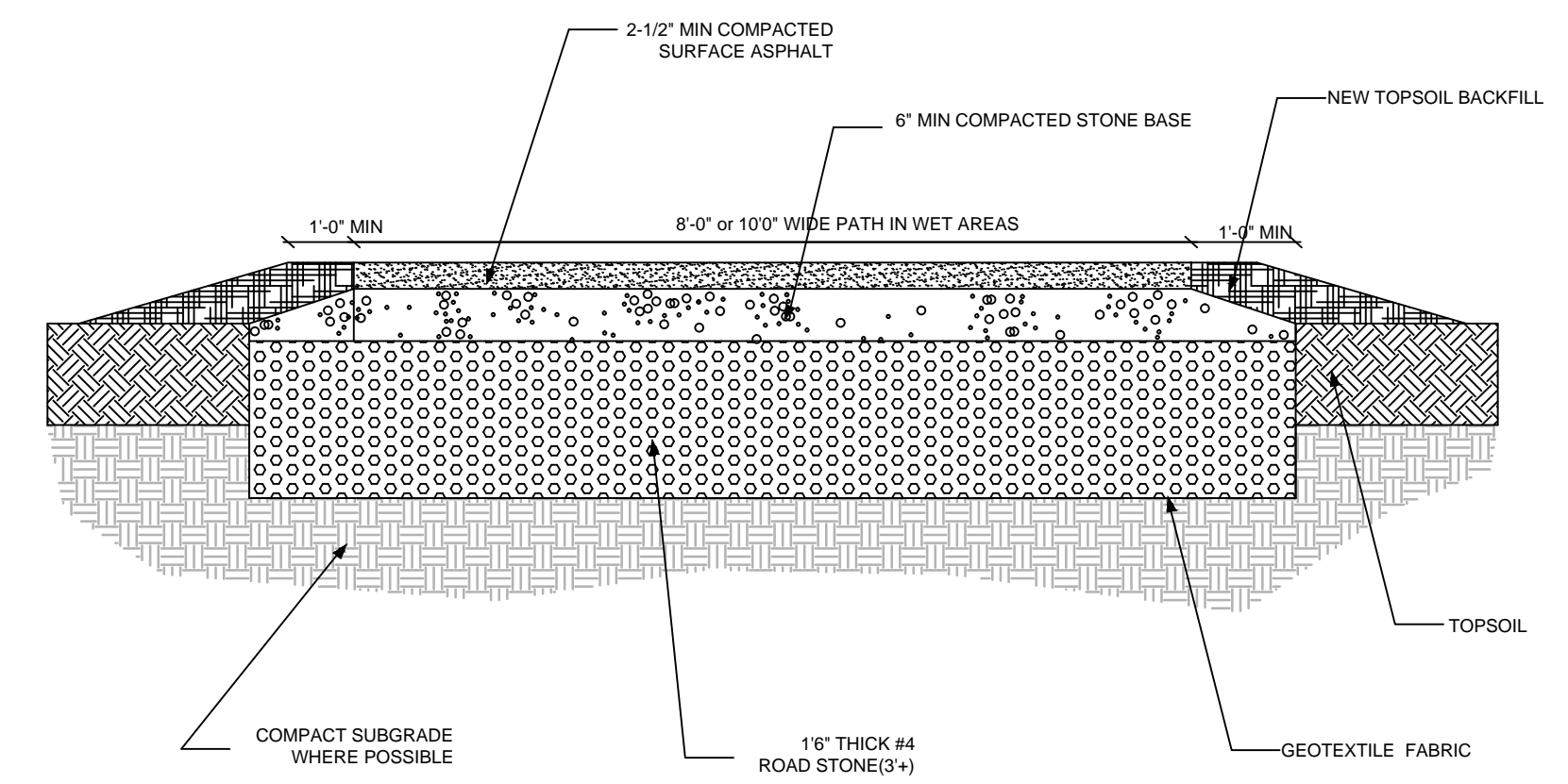
8
5 **POURED IN PLACE RUBBER TO EXISTING SURFACES**
No Scale



9
5 **WATERLINE PIPE TRENCH DETAIL**
No Scale



10
5 **DRAINAGE PIPE TRENCH DETAIL**
No Scale



11
5 **PATH X-SECTION WESTBURY PARK**
No Scale

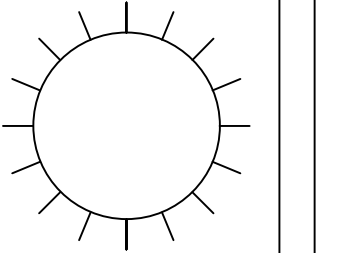
No.	Description	Date
1	ISSUED FOR REVIEW	1/23/2017
2	ISSUED FOR BID	1/23/2017

PLAYGROUND & PAVING IMPROVEMENTS 2017

DETAILS - VICTORIA - SEASCAPE COLONY

1885 W. HIGGINS ROAD
HOFFMAN ESTATES, ILLINOIS 60195
PHONE: (847)-865-7500
FAX: (847)865-7523

HOFFMAN ESTATES PARK DISTRICT



SCALE AS SHOWN