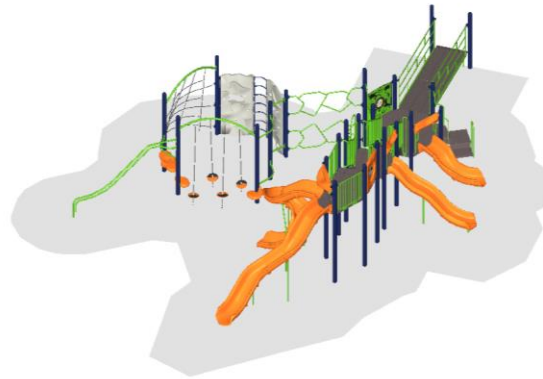


Hoffman Estates Park District Canterbury Park

Proposal # 129-85700-4
November 04, 2015



Presented by
Play Illinois, LLC
and





November 04, 2015

Gary Buczkowski
Hoffman Estates Park District
1685 W. Higgins Rd.
Hoffman Estates, IL 60169

Dear Gary Buczkowski:

Play Illinois, LLC is delighted to provide Hoffman Estates Park District with this playground equipment proposal.

This design was developed with your specific needs in mind, and we look forward to discussing this project further with you to ensure your complete satisfaction. Play Illinois, LLC is confident that this proposal will satisfy Hoffman Estates Park District's functional, environmental, and safety requirements -- and most importantly -- bring joy and excitement to the children and families directly benefiting from your new playground.

You have our personal commitment to support this project and your organization in every manner possible, and we look forward to continue developing a long-standing relationship with Hoffman Estates Park District. We appreciate your consideration and value this opportunity to earn your business.

Sincerely,

Daniel Mueller
Play Illinois, LLC
4716 Roslyn Rd.
Downers Grove, IL 60515

Design Summary

Play Illinois, LLC is very pleased to present this Proposal for consideration for the Canterbury Park located in Hoffman Estates. BCI Burke Company, LLC has been providing recreational playground equipment for over 90 years and has developed the right mix of world-class capabilities to meet the initial and continuing needs of Hoffman Estates Park District. We believe our proposal will meet or exceed your project's requirements and will deliver the greatest value to you.

The following is a summary of some of the key elements of our Proposal:

- Project Name: Canterbury Park
- Project Number: 129-85700-4
- User Capacity: 107
- Age Groups: Ages 2-5 years, 5-12 years
- Dimensions: 45' 6" x 118' 1"
- Designer Name: Joel Schleis

Play Illinois, LLC has developed a custom playground configuration based on the requirements as they have been presented for the Canterbury Park playground project. Our custom design will provide a safe and affordable playground environment that is aesthetically pleasing, full of fun for all users and uniquely satisfies your specific requirements. In addition, proposal # 129-85700-4 has been designed with a focus on safety, and is fully compliant with ASTM F1487 and CPSC playground safety standards.

We invite you to review this proposal for the Canterbury Park playground project and to contact us with any questions that you may have.

Thank you in advance for giving us the opportunity to make this project a success.

INFORMATION
MINIMUM FALL ZONE
SURFACED WITH
RESILIENT MATERIAL
AREA

2064 SQ.FT.

PERIMETER
267 FT.

STRUCTURE SIZE
45' 6" x 118' 1"

STRUCTURE IS DESIGNED
FOR CHILDREN AGES:

- 6-23 MONTH OLDS
- 2-5 YEAR OLDS
- 5-12 YEAR OLDS
- 13 + YEAR OLDS

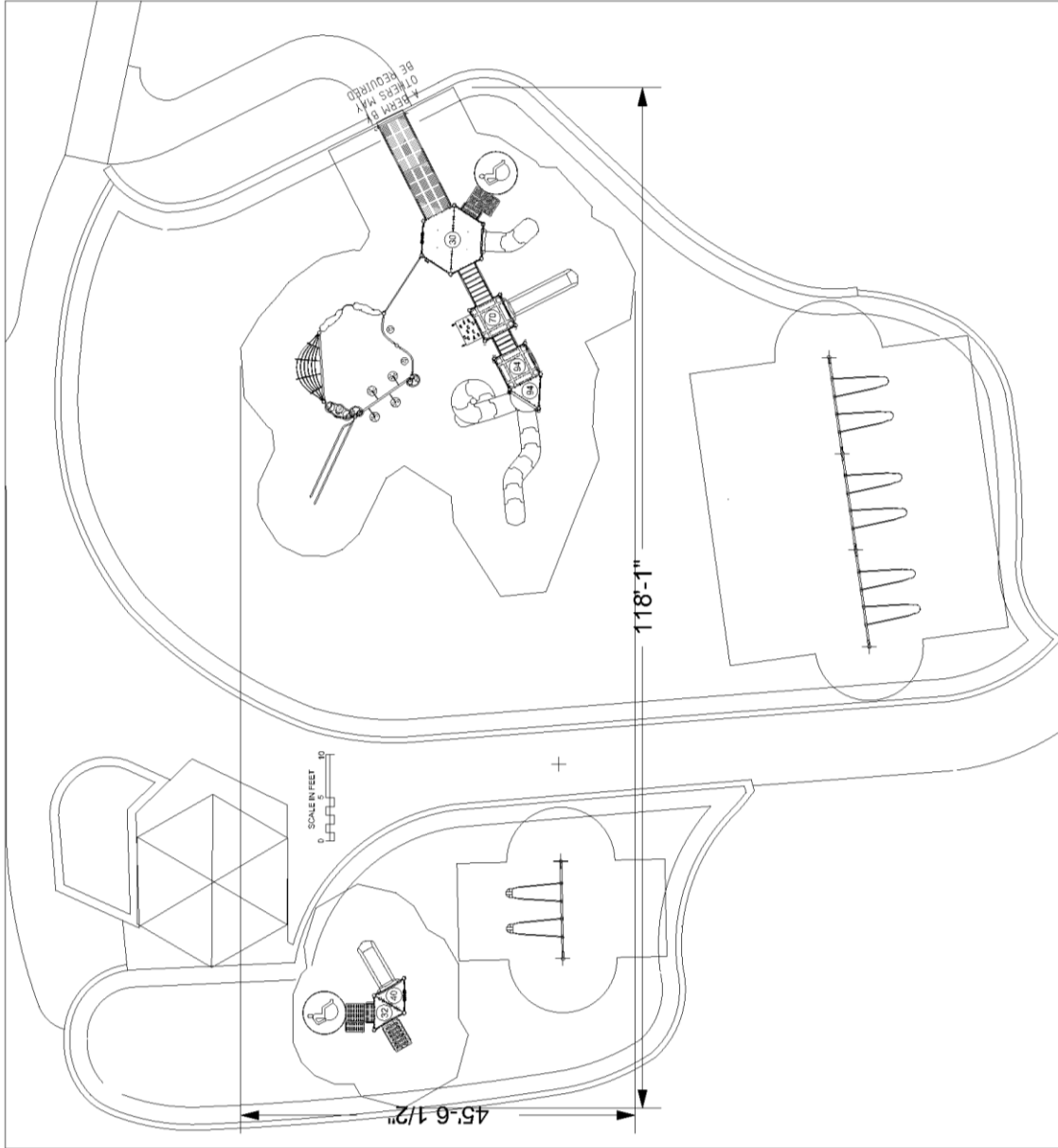


To verify product certification,
visit www.ipema.org

The play components identified
in this plan are IPEMA
certified. The use and layout of
these components conform to the
requirements of ASTM F1487.
To verify product certification,
visit www.ipema.org

The space requirements shown
here are to ASTM standards.
Requirements for other standards
may be different.

The use and layout of play
components identified in this plan
conform to the CPSC guidelines.
U.S. CPSC recommends the
separation of age groups in
playground layouts.



WARNING!

ACCESSIBLE SAFETY SURFACING MATERIAL IS REQUIRED BENEATH
AND AROUND THIS EQUIPMENT.
FOR SLIDE FALL ZONE SURFACING AREA SEE CPSC's Handbook for
Public Playground Safety.
PLATFORM HEIGHTS ARE IN INCHES ABOVE RESILIENT MATERIAL.

ADA ACCESSIBILITY GUIDELINE (ADAAG CONFORMANCE)

NUMBER OF PLAY EVENTS:	17	RECD: 0
NUMBER OF ELEVATED PLAY EVENTS:	10	RECD: 2
NUMBER OF ELEVATED PLAY EVENTS ACCESSIBLE BY RAMP:	PROVIDED: 2	RECD: 9
NUMBER OF ELEVATED PLAY EVENTS ACCESSIBLE BY TRANSFER SYSTEM:	PROVIDED: 9	RECD: 5
NUMBER OF ELEVATED PLAY EVENTS ACCESSIBLE BY RAMP OR TRANSFER SYSTEM:	PROVIDED: 7	RECD: 3
NUMBER OF GROUND LEVEL PLAY EVENTS:	PROVIDED: 5	RECD: 3
NUMBER OF TYPES OF GROUND LEVEL PLAY EVENTS:	PROVIDED: 5	RECD: 3



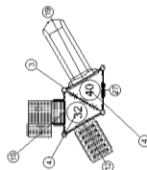
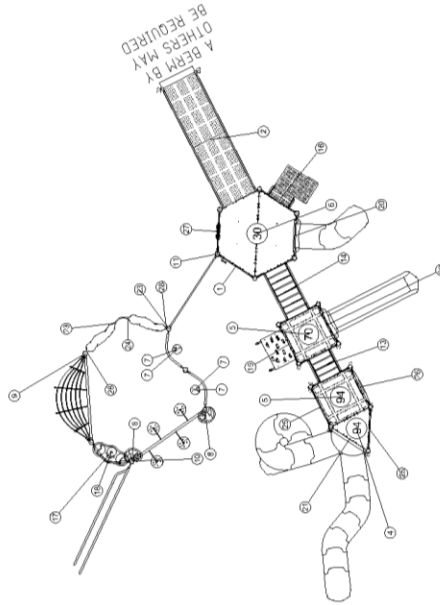
SERIES: Intensity, Nucleus
SITE PLAN
DRAWN BY: Joel Schleis

Canterbury Park
1685 W. Higgins Rd.
Hoffman Estates, IL 60169

November 04, 2015

Play Illinois, LLC
129-85700-4

ITEM	COMP.	DESCRIPTION
1	270-0001	OFFSET ENCLOSURE
2	270-0005	12" RISE ENTRANCE RAMP W/ G
3	270-0050	8" CLOSURE PLATE
4	270-0129	TRIANGLE PLATFORM
5	270-0130	SQUARE PLATFORM
6	270-0131	HEXAGONAL PLATFORM S5P
7	370-0001	AGILITY ARC
8	370-0002	PEP STEP
9	370-0008	WILD WEB ROPE CLIMBER
10	370-0024	DYNAMIC DISCS
11	370-0033	ODYSSSEY POST LINK DOUBLE
12	370-0306	DECK TO DECK PLANK GROUND
13	370-0467	24" TRANSITION STAIR W/BARRI
14	370-0469	40" TRANSITION STAIR W/BARRI
15	370-0498	STONE SLOPE CLIMBER 72"
16	370-0718	TRANSFER STATION, HANDRAIL
17	470-0100	RAPID RAILS, 48"
18	470-0101	DYNAMIC PAD
19	470-0507	ROCKN ROLL SLIDE, 40" - 48"
20	470-0564	VIPER L 32
21	470-0576	VIPER II S-SPIRAL 96
22	470-0622	ROCKN ROLL SLIDE 64" - 72"
23	560-0541	ROCKIT OFFSET PANEL
24	560-0546	ROCKIT CURVED LADDER
25	570-0394	PIPE WALL
26	570-0796	PROPELLER PANEL, ABOVE PLA
27	570-1724	RAIN WHEEL PANEL
28	660-0138	ROCKIT ATTACHMENT POST 79

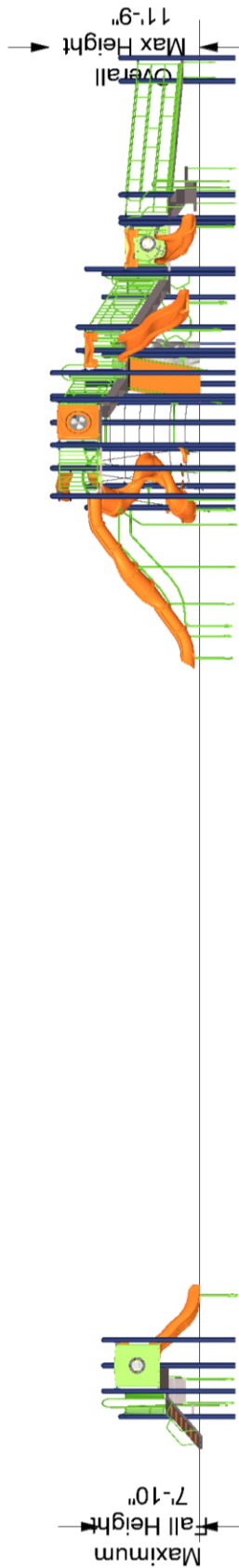


November 04, 2015

SERIES: Intensity, Nucleus
 COMPONENT PLAN
 DRAWN BY: Joel Schleis

Canterbury Park
 1685 W. Higgins Rd.
 Hoffman Estates, IL 60169

Play Illinois, LLC
 129-85700-4



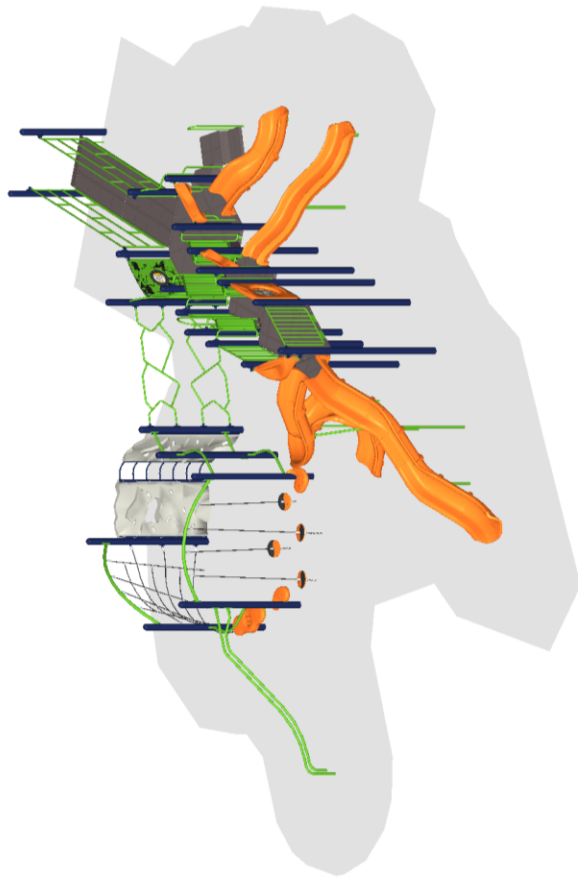
The protective surfacing for this design must accommodate the critical fall height.

November 04, 2015

SERIES: Intensity, Nucleus
ELEVATION PLAN
DRAWN BY: Joel Schleis

Canterbury Park
1685 W. Higgins Rd.
Hoffman Estates, IL 60169

Play Illinois, LLC
129-85700-4



November 04, 2015

SERIES: Intensity, Nucleus

ISOMETRIC PLAN

DRAWN BY: Joel Schleis

Canterbury Park

1685 W. Higgins Rd.

Hoffman Estates, IL 60169

Play Illinois, LLC

129-85700-4



Proposal # 129-85700-4

November 04, 2015
2015 Pricing

Proposal Prepared for:

Gary Buczkowski
Hoffman Estates Park District
1685 W. Higgins Rd.
Hoffman Estates, IL 60169
Phone: 847-310-3606

Project Location:

Canterbury Park
1685 W. Higgins Rd.
Hoffman Estates, IL 60169

Proposal Prepared by:

Play Illinois, LLC
4716 Roslyn Rd.
Downers Grove, IL 60515
Phone: 844-222-9990
Fax:
mike@playil.today

Daniel Mueller
Phone: 773-368-2987
Fax:
dmueller@playil.today

Component No.	Description	Qty.	User Cap.	Ext. User Cap.	Weight	Ext. Weight
Intensity						
370-0001	AGILITY ARC	4	1	4	11	44
370-0002	PEP STEP	2	1	2	11	22
370-0008	WILD WEB ROPE CLIMBER	1	6	6	77	77
370-0024	DYNAMIC DISCS	1	6	6	93	93
370-0033	ODYSSEY POST LINK DOUBLE	1	4	4	78	78
470-0100	RAPID RAILS, 48"	1	3	3	85	85
470-0101	DYNAMIC PAD	1	2	2	27	27
670-0097	INTENSITY CURRICULUM KIT	1	0	0	2	2
Nucleus						
270-0001	OFFSET ENCLOSURE	1	1	1	30	30
270-0005	12" RISE ENTRANCE RAMP W/ GUA...	1	12	12	540	540
270-0050	8" CLOSURE PLATE	1	0	0	10	10
270-0129	TRIANGLE PLATFORM	3	2	6	48	144
270-0130	SQUARE PLATFORM	2	6	12	106	212
270-0131	HEXAGONAL PLATFORM S5P	1	0	0	287	287
370-0306	DECK TO DECK PLANK GROUND LEV...	1	4	4	134	134
370-0467	24" TRANSITION STAIR W/BARRIE...	1	2	2	164	164
370-0469	40" TRANSITION STAIR W/BARRIE...	1	4	4	279	279
370-0498	STONE SLOPE CLIMBER 72"	1	2	2	145	145
370-0718	TRANSFER STATION, HANDRAIL 32"	2	4	8	162	324
470-0507	ROCK'N ROLL SLIDE, 40" - 48"	1	1	1	107	107
470-0564	VIPER L 32	1	2	2	121	121
470-0576	VIPER II S-SPIRAL 96	1	8	8	541	541
470-0622	ROCK'N ROLL SLIDE, 64" - 72"	1	2	2	147	147
570-0394	PIPE WALL	2	0	0	36	72
570-0796	PROPELLER PANEL, ABOVE PLATFO...	1	2	2	61	61
570-1724	RAIN WHEEL PANEL	2	2	4	53	106
600-0104	NPPS SUPERVISION SAFETY KIT	1	0	0	3	3
670-0002	POST ASSEMBLY 5" OD X 107"	6	0	0	58	348
670-0098	MODULAR HARDWARE, NUCLEUS	1	0	0	5	5
670-0099	INSTALLATION KIT, INTENSITY	1	0	0	2	2
670-0103	MAINTENANCE KIT, INTENSITY	1	0	0	0	0
670-0165	POST ASSEMBLY 5" OD X 123"	6	0	0	66	396
670-0166	POST ASSEMBLY 5" OD X 139"	6	0	0	74	444
670-0167	POST ASSEMBLY 5" OD X 147"	2	0	0	78	156
670-0169	POST ASSEMBLY 5" OD X 171"	7	0	0	91	637



Proposal # 129-85700-4

November 04, 2015

2015 Pricing

RockIt

560-0541	ROCKIT OFFSET PANEL	2	4	8	83	166
560-0546	ROCKIT CURVED LADDER	1	2	2	59	59
660-0138	ROCKIT ATTACHMENT POST 79 1/2"	2	0	0	18	36

Total User Capacity: 107
Total Weight: 6,104 lbs.

Information is relative to the Nov 4 2015 4:35AM database.

Special Notes:

Prices do not include freight, unloading, material storage, site excavation/preparation, removal of existing equipment, removal of excess soil from footing holes, site security, safety surfacing, installation, or sales tax (if applicable). Prices are based on standard colors per CURRENT YEAR BCI Burke Catalog. Custom colors, where available, would be an extra charge. **Pricing is valid until 12/18/2015.**

BCI BURKE GENERATIONS WARRANTY™

The Longest and Strongest warranty in the industry

BCI Burke Company, LLC ("Burke") warrants that all standard products are warranted to be free from defects in materials and workmanship, under normal use and service, for a period of one (1) year from the date of invoice.

We stand behind our products.

In addition, the following products are warranted, under normal use and service from the date of invoice as follows:

- One Hundred (100) Year Limited Warranty on aluminum and steel upright posts (including Intensity®, Voltage™, Nucleus™ and Little Buddies®) against structural failure due to corrosion, deterioration or workmanship.
- One Hundred (100) Year Limited Warranty on KoreConnect® clamps against structural failure due to corrosion, deterioration or workmanship.
- One Hundred (100) Year Limited Warranty on Hardware (nuts, bolts, washers)
- One Hundred (100) Year Limited Warranty on bolt-through fastening and clamp systems (Voltage™, Intensity®, Nucleus™ and Little Buddies®).
- Twenty-Five (25) Year Limited Warranty on spring assemblies and aluminum cast animals.
- Fifteen (15) Year Limited Warranty on main structure platforms and decks, metal roofs, table tops, bench tops, railings, loops and rungs.
- Fifteen (15) Year Limited Warranty on all plastic components including StoneBorders against structural failure due to materials or workmanship.
- Ten (10) Year Limited Warranty on ShadePlay Canopies fabric, threads, and cables against degradation, cracking or material breakdown resulting from ultra-violet exposure, natural deterioration or manufacturing defects. This warranty is limited to the design loads as stated in the specifications.
- Ten (10) Year Limited Warranty on NaturePlay® Boulders and GFRC products against structural failure due to natural deterioration or workmanship. Natural wear, which may occur with any concrete product with age, is excluded from this warranty.
- Ten (10) Year Limited Warranty on Full Color Custom Signage against manufacturing defects that cause delamination or degradation of the sign. Full Color Custom Signs also carry a two (2) year warranty against premature fading of the print and graphics on the signs.
- Five (5) Year Limited Warranty on Intensity® cables against premature wear due to natural deterioration or manufacturing defects.
- Five (5) Year Limited Warranty on swing seats and hangers; Kid Koaster® Trolleys and other moving parts against structural failure due to materials or workmanship.
- Three (3) Year Limited Warranty on electronic panel speakers, sound chips and circuit boards against electronic failure caused by manufacturing defects.

The warranty stated above is valid only if the equipment is erected in conformity with the layout plan and/or installation instructions furnished by BCI Burke Company, LLC using approved parts; have been maintained and inspected in accordance with BCI Burke Company, LLC instructions. Burke's liability and your exclusive remedy hereunder will be limited to repair or replacement of those parts found in Burke's reasonable judgment to be defective. Any claim made within the above stated warranty periods must be made promptly after discovery of the defect. A part is covered only for the original warranty period of the applicable part. Replacement parts carry the applicable warranty from the date of shipment of the replacement from Burke. After the expiration of the warranty period, you must pay for all parts, transportation and service charges.

Burke reserves the right to accept or reject any claim in whole or in part. Burke will not accept the return of any product without its prior written approval. Burke will assume transportation charges for shipment of the returned product if it is returned in strict compliance with Burke's written instructions.

THE FOREGOING WARRANTIES ARE EXCLUSIVE AND IN LIEU OF ANY OTHER WARRANTY, EXPRESS OR IMPLIED, INCLUDING BUT NOT LIMITED TO ANY IMPLIED WARRANTY OR MERCHANTABILITY OR FITNESS FOR A PARTICULAR PURPOSE. IF THE FOREGOING DISCLAIMER OF ADDITIONAL WARRANTIES IS NOT GIVEN FULL FORCE AND EFFECT, ANY RESULTING ADDITIONAL WARRANTY SHALL BE LIMITED IN DURATION TO THE EXPRESS WARRANTIES AND BE OTHERWISE SUBJECT TO AND LIMITED BY THE TERMS OF BURKE'S PRODUCT WARRANTY. SOME STATES DO NOT ALLOW THE EXCLUSION OF CERTAIN IMPLIED WARRANTIES, SO THE ABOVE LIMITATION MAY NOT APPLY TO YOU.

Warranty Exclusions: The above stated warranties do not cover: "cosmetic" defects, such as scratches, dents, marring, or fading; damage due to incorrect installation, vandalism, misuse, accident, wear and tear from normal use, exposure to extreme weather; immersion in salt or chlorine water, unauthorized repair or modification, abnormal use, lack of maintenance, or other cause not within Burke's control; and

Limitation of Remedies: Burke is not liable for consequential or incidental damages, including but not limited to labor costs or lost profits resulting from the use of or inability to use the products or from the products being incorporated in or becoming a component of any other product. If, after a reasonable number of repeated efforts, Burke is unable to repair or replace a defective or nonconforming product, Burke shall have the option to accept return of the product, or part thereof, if such does not substantially impair its value, and return the purchase price as the buyer's entire and exclusive remedy. Without limiting the generality of the foregoing, Burke will not be responsible for labor costs involved in the removal of products or the installation of replacement products. Some states do not allow the exclusion of incidental damages, so the above exclusion may not apply to you.

TERMS OF SALE

Pricing: Prices published in this catalog are in USD, are approximate and do not include shipping & handling, surfacing, installation nor applicable taxes. All prices are subject to change without notice. Contact your Burke representative for current pricing. Payments are to be made in USD.

Weights: Weights are approximate and may vary with actual orders.

Installation: All equipment is shipped unassembled. For a list of factory-certified installers in your area, please contact your Burke representative.

Specifications: Product specifications in this catalog were correct at the time of publication. However, product improvements are ongoing at Burke, and we reserve the right to change or discontinue specifications without notice.

Loss or Damage in Transit: A signed bill of lading is our receipt from a carrier that our shipment to you was complete and in good condition upon arrival.

Before you sign, please check the Bill of Lading carefully when the shipment arrives to make sure nothing is missing and there are no damages.

Once the shipment leaves our plant, we are no longer responsible for any damage, loss or shortage.

For more information regarding the warranty, call Customer Service at 920-921-9220 or 1-800-356-2070.

01/2015